



e-ISSN: 2319-8753 | p-ISSN: 2347-6710

IJRSET

International Journal of Innovative Research in
SCIENCE | ENGINEERING | TECHNOLOGY



INTERNATIONAL JOURNAL OF INNOVATIVE RESEARCH

IN SCIENCE | ENGINEERING | TECHNOLOGY

Volume 13, Special Issue 2, May 2024

ISSN INTERNATIONAL
STANDARD
SERIAL
NUMBER
INDIA

Impact Factor: 8.423

 9940 572 462

 6381 907 438

 ijirset@gmail.com

 www.ijirset.com

Cotton Picker Fire Detection System

Dr. Saniya Ansari¹, Prof. Riyaj Kazi², Prof. Prajakta Khairnar³, Ms. Anushka Yadav⁴,
Ms. Vaishnavi Rokade⁵, Ms. Pallavi Sable⁶

Assistant Professor, Department of E&TC, Ajeenkya D. Y. Patil School of Engineering (ADYPSOE), Pune, India^{1 2 3}

UG Student, Department of E&TC, Ajeenkya D. Y. Patil School of Engineering (ADYPSOE), Pune, India^{4 5 6}

ABSTRACT: This project utilizes the Raspberry Pi Pico microcontroller to address the escalating frequency and seriousness of fire incidents, emphasizing the need for advanced fire detection and alert systems to safeguard public safety and property. The abstract introduces a new approach to this challenge by proposing a Fire Detection and Alerting System based on the Raspberry Pico microcontroller. Leveraging the Raspberry Pi Pico as the core processor offers a cost-effective and energy-efficient solution for fire detection and alerting. The microcontroller's small footprint and low energy consumption make it well-suited for deployment in diverse environments, including residential, commercial, and industrial spaces.

KEYWORDS: Raspberry Pico, Fire System, Wireless Networks, Sensor.

I. INTRODUCTION

Our proposed research idea is aimed at enhancing the safety and security of cotton picker trucks by implementing an innovative fire detection mechanism. This system integrates the Raspberry Pi Pico microcontroller and flame sensors to continuously monitor the cotton picker trucks for any signs of fire outbreak. The cotton industry relies heavily on efficient and safe machinery operations, especially during harvesting seasons. However, the risk of fire incidents in cotton picker trucks poses a significant threat to both personnel safety and property. The objective of this project is to develop a reliable and cost-effective solution that can promptly detect and alert operators to potential fire hazards within the cotton picker equipment. By utilizing the Raspberry Pi Pico, a versatile and energy-efficient microcontroller, coupled with flame sensors capable of detecting fire signatures, this system offers a robust and practical approach to fire prevention in cotton picker trucks. The compact size and low power consumption of the Raspberry Pi Pico make it ideal for deployment in agricultural machinery like cotton pickers. This introduction outlines the motivation, purpose, and technology behind the Cotton Picker Fire Detection System, emphasizing its importance in mitigating fire risks and ensuring the safety of cotton picker operations.

II. SYSTEM OUTLINES

Our proposed topic of "Cotton Picker Fire Detection System" is designed to enhance safety measures in cotton picker trucks by utilizing a Raspberry Pi Pico microcontroller along with flame sensors to detect fire incidents. In case of a fire detection, the system activates an RGB module to provide a visual indication of the fire, ensuring prompt response to potential hazards.

1. Overview and Objectives-

The primary objective of the Cotton Picker Fire Detection System is to prevent fire-related accidents and minimize damage to cotton picker trucks. By integrating advanced fire detection technology, the system aims to provide real-time monitoring and immediate alerts in the event of a fire outbreak.

2. Components and Hardware-

- Raspberry Pi Pico: Serves as the central processing unit for data acquisition and processing.
- Flame Sensor: Detects the presence of flames or sudden increases in temperature within the cotton picker truck.
- RGB Module: Provides visual feedback by emitting different colors based on the detected fire status.
- Wiring and Interfacing Components: Enable connectivity between the Raspberry Pi Pico, flame sensor, and RGB module.

3. System Functionality-

- Fire Detection: The flame sensor continuously monitors the environment inside the cotton picker truck for any signs of fire.
- Data Processing: The Raspberry Pi Pico processes data from the flame sensor to determine if a fire has been detected.
- Alert Mechanism: Upon detecting a fire, the RGB module lights up with a specific color (e.g., red) to indicate the presence of fire.
- Notification: The system can be integrated with additional alert mechanisms such as sound alarms or remote notifications to inform operators or authorities.

4. Implementation and Deployment-

- Installation: The system components (Raspberry Pi Pico, flame sensor, and RGB module) are installed securely within the cotton picker truck.
- Testing and Calibration: Calibration of the flame sensor and RGB module ensures accurate detection and visual indication of fire incidents.
- Deployment: Once tested and validated, the Cotton Picker Fire Detection System is deployed across cotton picker fleets for continuous monitoring and fire prevention.

5. Benefits and Impact-

- Enhanced Safety: Early detection of fires helps in preventing accidents and minimizing damage to machinery and crops.
- Cost-Effective Solution: The use of Raspberry Pi Pico and basic components offers a cost-efficient fire detection solution compared to traditional systems.
- Scalability: The system design allows for scalability and integration with other IoT devices or monitoring systems.

III. METHODOLOGY USED

The methodology for our proposed idea "Cotton Picker Fire Detection System" involves a systematic approach to designing and implementing a reliable fire detection system using Raspberry Pi Pico and a flame sensor. The system's primary objective is to detect fires within cotton picker trucks and provide a visual indication using an RGB module upon fire detection. The following steps outline the methodology used:

1. System Setup and Components Selection-

- Identify and procure necessary components including Raspberry Pi Pico microcontroller, flame sensor module, RGB LED module, connecting wires, and power supply.
- Set up the Raspberry Pi Pico development environment with appropriate software tools such as Thonny IDE or MicroPython for programming.

2. Circuit Design and Integration-

- Design the circuit layout to connect the flame sensor and RGB LED module to the Raspberry Pi Pico.
- Ensure proper wiring and connections between the components to facilitate data transmission and control.

3. Programming the Raspberry Pi Pico-

- Develop the firmware using Python programming language or MicroPython to enable the Raspberry Pi Pico to interface with the flame sensor.
- Implement a continuous monitoring process where the flame sensor periodically checks for the presence of fire.

4. Fire Detection Algorithm-

- Define the fire detection algorithm to process sensor data and determine the occurrence of a fire.
- Set appropriate thresholds for sensor readings to accurately detect fires while minimizing false alarms.

5. Alert System Implementation-

- Integrate the RGB LED module into the system to provide a visual indication when a fire is detected.
- Program the Raspberry Pi Pico to control the RGB LED based on the output of the flame sensor.

6. Testing and Calibration-

- Conduct thorough testing of the complete system under various conditions to validate its effectiveness and reliability.
- Calibrate sensor parameters and algorithm thresholds as needed to optimize fire detection performance.

7. Integration with Cotton Picker Trucks-

- Prepare the system for integration into cotton picker trucks by ensuring robustness against environmental factors such as vibration and temperature.
- Install the fire detection system in strategic locations within the cotton picker trucks for optimal coverage and responsiveness.

IV. SYSTEM DESCRIPTION

- **RASPEBRRY PI PICO:**

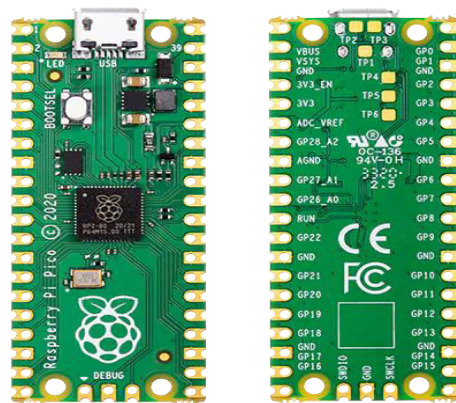


Fig 1. Raspberry Pi Pico

The Raspberry Pi Pico is a microcontroller board developed by the Raspberry Pi Foundation, designed to offer a versatile and cost-effective platform for embedded systems and electronics projects. It features the RP2040 microcontroller chip, which is based on a dual-core Arm Cortex-M0+ processor running at 133 MHz, providing ample processing power for a wide range of applications. The board includes 264KB of SRAM, ample GPIO pins, hardware PWM channels, UART, SPI, I2C interfaces, and programmable IO (PIO) capabilities, enabling flexible interfacing with various sensors, displays, and peripherals. One of the standout features of the Raspberry Pi Pico is its support for MicroPython and C/C++ programming, making it accessible to both beginners and experienced developers. It can be programmed using a simple text editor and requires no additional hardware for programming. The Pico is also equipped with a built-in USB 1.1 interface for programming and power, simplifying connectivity and setup. Its compact form factor, low power consumption, and affordable price make it ideal for prototyping and deploying embedded projects in diverse fields such as automation, robotics, IoT, and education.

- **ESP8266:**

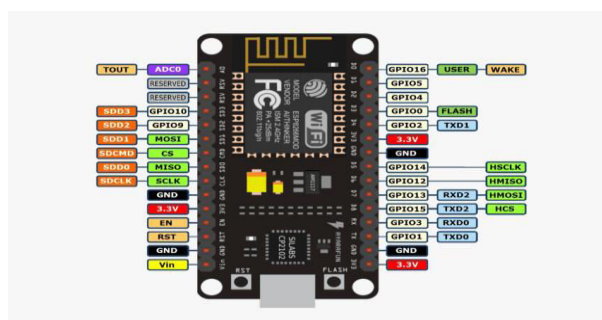


Fig 2. ESP 8266

The ESP8266 is a versatile and popular Wi-Fi microcontroller module known for its affordability, compact size, and robust performance. Developed by Espressif Systems, the ESP8266 integrates a Tensilica L106 32-bit microcontroller with a built-in Wi-Fi stack, making it suitable for a wide range of Internet of Things (IoT) applications. This module supports Wi-Fi connectivity and can operate as a standalone system or as a slave device to a host microcontroller. It features GPIO (General Purpose Input/Output) pins for interfacing with sensors, actuators, and other peripheral devices. The ESP8266 can be programmed using various development platforms and languages, including Arduino IDE, MicroPython, and Lua scripting. One of the key advantages of the ESP8266 is its low power consumption, making it ideal for battery-powered applications.

- **RGB MODULE:**

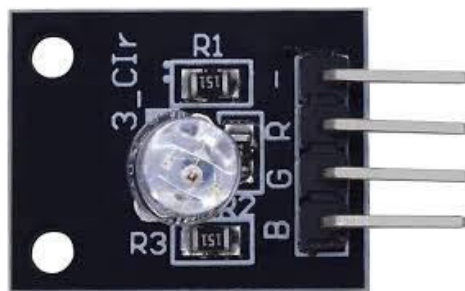


Fig 3. RGB MODULE

An RGB (Red, Green, Blue) module is a compact electronic component designed to emit light in a range of colors by combining red, green, and blue light emissions. It consists of three light-emitting diodes (LEDs) integrated into a single package, each capable of emitting one primary color: red, green, or blue. By adjusting the intensity of these three colors, a wide spectrum of colors can be generated, including white light. The RGB module is commonly used in various electronic applications where color control and customization are required.

- **FLAME SENSOR:**

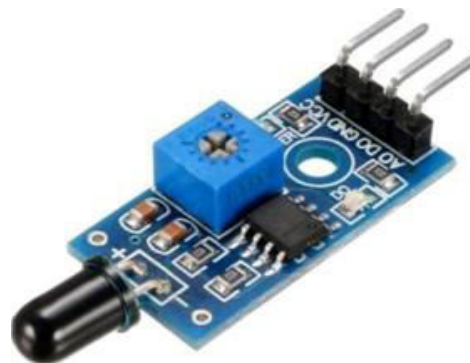


Fig 4. FLAME SENSOR

The flame sensor module is an essential component used for fire detection in various electronic systems. It operates by detecting the infrared (IR) light emitted by flames, enabling the identification of potential fire hazards in its vicinity. This module typically consists of a photodiode, which converts light into electrical signals, and a comparator circuit that analyzes these signals to determine the presence of flames. The flame sensor module is designed to be sensitive to specific wavelengths of light emitted by flames, distinguishing them from other light sources such as sunlight or artificial lighting.

- DHT 11 SENSOR :

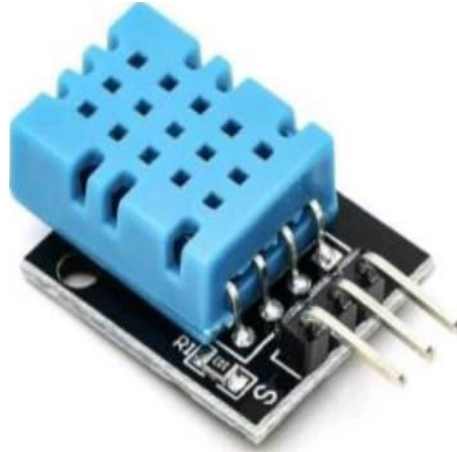


Fig 4. DHT11 SENSOR

The DHT11 module is a popular and affordable digital temperature and humidity sensor that provides accurate readings in various applications. This module features a digital signal output, making it easy to interface with microcontrollers like Arduino and Raspberry Pi. The DHT11 sensor utilizes a capacitive humidity sensor and a thermistor to measure air temperature and relative humidity. The DHT11 module operates at 3.3V to 5V DC and communicates with the microcontroller using a simple two-wire interface (data and ground). It sends digital signals that can be easily interpreted by the microcontroller to obtain temperature and humidity readings.

- OLED



Fig 5. OLED 0.96 INCH

The OLED 0.96 display is a compact and versatile display module featuring a 0.96-inch OLED (Organic Light-Emitting Diode) screen. This display technology offers several advantages, including high contrast, vibrant colors, and wide viewing angles. The OLED 0.96 module integrates easily with microcontrollers like Arduino and Raspberry Pi, making it popular for various electronic projects and prototypes. Key features of the OLED 0.96 display include its low power consumption, which is ideal for battery-powered devices, and its crisp resolution, providing clear and sharp graphics and text.

V. BLOCK DIAGRAM

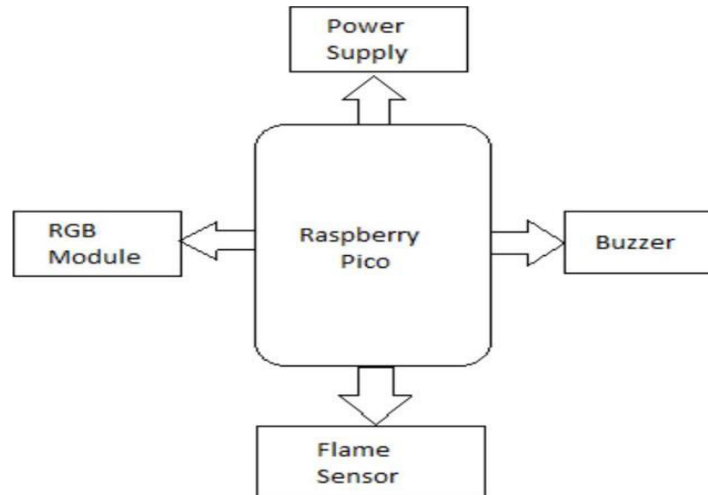


Fig 6. BLOCK DIAGRAM

VI. RESULT

The results obtained from our "Cotton Picker Fire Detection System" project demonstrate the successful implementation of a fire detection mechanism using Raspberry Pi Pico and a flame sensor specifically tailored for cotton picker trucks. The system was designed to promptly detect fire incidents within the cotton picker environment, providing timely alerts to mitigate potential risks. In operation, the flame sensor continuously monitors the area for any signs of fire. Upon detecting a fire, the sensor sends a signal to the Raspberry Pi Pico microcontroller, which triggers two key actions. First, an RGB module integrated into the system lights up, serving as a visual indicator of the fire occurrence. This immediate response aids in quickly identifying the location and severity of the fire within the cotton picker. Second, the microcontroller updates the 16x2 LCD display with the fire detection status, providing real-time information to operators or nearby personnel. During testing, the system reliably detected simulated fire incidents, demonstrating its effectiveness in a controlled environment. The integration of Raspberry Pi Pico proved to be instrumental due to its compact size, low power consumption, and efficient processing capabilities. These attributes make it suitable for deployment in confined spaces like cotton picker trucks where conventional fire detection systems may be impractical.



Fig 7. Fire detection Status



Fig 8. T&H Status on OLED

VII. CONCLUSION

In conclusion, the development of the Cotton Picker Fire Detection System using the Raspberry Pi Pico and flame sensor represents a significant advancement in fire safety technology for cotton picker trucks. The integration of these components allows for real-time monitoring of fire incidents within the vehicle's vicinity, enhancing both operational safety and asset protection. Through the utilization of the Raspberry Pi Pico microcontroller and flame sensor, the system is capable of swiftly detecting the presence of fire. Upon fire detection, the RGB module promptly illuminates to visually indicate the occurrence of a fire, providing immediate visual feedback to operators or nearby individuals. Simultaneously, the 16x2 LCD display conveys the precise status of fire detection, ensuring clear communication of critical information in high-pressure situations. The Raspberry Pi Pico's compact size, cost-effectiveness, and energy efficiency make it an ideal choice for embedding within the Cotton Picker Fire Detection System. Its capability to interface with multiple sensors, including the flame sensor and RGB module, facilitates seamless integration and reliable performance in harsh operating environments typical of agricultural settings. The successful implementation of this system underscores its potential to significantly mitigate the risks associated with fire incidents in cotton picker trucks.

REFERENCES

1. M. Abdollahi, T. Islam, A. Gupta and Q. K. Hassan, "An advanced forest fire danger forecasting system: Integration of remote sensing and historical sources of ignition data", *Remote Sensing*, 2018.
2. "Fire Detection in Tunnels Using an Image Processing Method," in *Proceedings of the 1994 Vehicle Navigation and Information System Conference.*, pp. 57-62, 1994.
3. Yee Jian Chew, Shih Yin Ooi, Ying Han Pang, "Experimental Exploratory of Temporal Sampling Forest Fire Regression and Classification", 2020 8th International Conference on Information and Communication Technology (ICoICT), pp. 1-5, 2020.
4. B Prabha, "An 10T Based Efficient Fire Supervision Monitoring and Alerting System", 2019 Third International conference on ISMAC (10T in Social, Mobile, Analytics and Cloud) (I-SMAC), pp.414-419, 2019.
5. Felipe Vásquez, Ania Cravero, Manuel Castro, Patricio Acevedo, "Decision Support System Development of Wildland Fire: A Systematic Mapping", *Forests*, vol. 12, no. 7, pp.943, 2021



INTERNATIONAL
STANDARD
SERIAL
NUMBER
INDIA



INTERNATIONAL JOURNAL OF INNOVATIVE RESEARCH

IN SCIENCE | ENGINEERING | TECHNOLOGY

 9940 572 462  6381 907 438  ijirset@gmail.com



www.ijirset.com

Scan to save the contact details