



e-ISSN: 2319-8753 | p-ISSN: 2347-6710

IJRSET

International Journal of Innovative Research in
SCIENCE | ENGINEERING | TECHNOLOGY



INTERNATIONAL JOURNAL OF INNOVATIVE RESEARCH


IN SCIENCE | ENGINEERING | TECHNOLOGY

Volume 13, Special Issue 2, May 2024

ISSN INTERNATIONAL
STANDARD
SERIAL
NUMBER
INDIA

Impact Factor: 8.423

 9940 572 462

 6381 907 438

 ijirset@gmail.com

 www.ijirset.com

Advancing Roadway Safety through Intelligent Directional Vehicle Indicators

Prof. Swati Khawate¹, Prof. Seema Khamankar², Prof. Manjusha Patil³, Prof. Monali Shirsath⁴,
Nutan Shinde⁵, Vandana Pawane, Rutuja Shinde⁶

Assistant Professor, Department of E&TC, Ajeenkya D. Y. Patil School of Engineering (ADYPSOE), Pune, India^{1 2 3 4}

UG Student, Department of E&TC, Ajeenkya D. Y. Patil School of Engineering (ADYPSOE), Pune, India^{5 6}

ABSTRACT: There is a critical need for creative ways to improve vehicle signaling systems, given the growing difficulties with road safety. In order to reduce the number of traffic accidents, this research suggests a revolutionary method for creating intelligently directed vehicle signs using current technologies. To build a complete signaling mechanism, the system includes an ESP32 controller board, an ADXL sensor, a buzzer, an OLED display, a 5V converter, and bike indicators. The ESP32 controller device functions as the system's central processing unit, coordinating all of its operations. The ESP32 enables real-time data processing and peripheral component connections thanks to its powerful processing capability and flexible connectivity choices. By guaranteeing smooth communication between the ESP32 and other modules, the 5V converter maximizes the system's power distribution. A key component of the suggested system makes use of bike indicators that may be modified to fit different kinds of vehicles. These indicators improve visibility and clarity for nearby cars by enabling fine control of signaling processes when used with the 2-channel relay module. Furthermore, the addition of a buzzer offers audio input, enhancing safety precautions by warning oncoming cars and pedestrians. Turn indicators and system status updates are two examples of vital information that may be sent to the driver through a dynamic interface provided by the combination of an OLED display. Moreover, context-aware signaling modifications are made possible by the addition of an ADXL sensor, which improves system responsiveness by sensing vehicle acceleration and deceleration. The suggested system seeks to improve traffic safety standards by revolutionizing conventional vehicle signaling techniques through the complementary combination of these components. Using intelligent directional signs to their full potential can help drivers express their intentions more clearly, which lowers the chance of collisions and promotes a more secure roadway for all users of the road.

KEYWORDS: Roadway safety, Intelligent vehicle indicators, ESP32 controller, Relay module, OLED display, ADXL sensor.

I. INTRODUCTION

As traffic accidents result in millions of deaths and countless injuries every year, roadway safety is still an enormous issue on an international level. Even though traffic management systems and car safety features have advanced significantly, there is still a need for technologies that can decrease hazards even more and enhance highway user security overall. Enhancing vehicle signaling technologies to give drivers accurate and clear signals of what they want is an essential aspect of this project. This project recommends the creation and application of Smart Direction Vehicle Indications (IDVIs) as a strategy for enhancing road safety in response to these difficulties. In order to deliver real-time, context-aware signaling that improves the predictability and clarity of driver actions, IDVIs make use of developing technology, including sensors, artificial intelligence, and communication between vehicles. The aim of this study project is to find out how IDVIs are designed, implemented, and may affect road safety. Vehicle-to-vehicle (V2V) communication might be completely transformed by IDVIs by combining sophisticated sensor technology with intelligent decision-making algorithms. A major step toward creating a more secure and linked transport environment is the use of IDVIs.

We want to achieve the following major goals with this project: Enhanced Safety: IDVIs try to lower the possibility of miscommunication and confrontations between drivers by sending out more accurate and informative signals, which lowers the danger of collisions and injuries. Better Traffic Flow: When drivers communicate their intentions clearly, it makes it easier for cars to anticipate and respond to impending moves, which in turn leads to less congestion and better traffic flow. Flexibility and Expand ability: IDVIs are engineered to accommodate a range of vehicle types and traffic

situations, guaranteeing their efficacy in a variety of settings and road circumstances. Integrating with Current Systems: To enable broad acceptance and compatibility, efforts will be undertaken to connect IDVIs smoothly with current traffic management infrastructure and car safety features.

II. RELATED WORK

A number of studies have been started in an effort to improve tracking and vehicle safety. One project is evolving a semi-automatic two-wheeler signal indicator with the goal of lowering the number of accidents brought on by carelessness or indifference to traffic laws. In order to effectively track vehicle position and control systems, an additional project combines GPS (Global Positioning System) with CORS and smart GIS. In addition, a real-time GPS car monitoring system that makes use of internet connectivity and GPS technology has been proposed. It is based on Google Maps. Moreover, Google Maps can be used by users of a web-based GPS car monitoring system to follow the whereabouts of their vehicles. Last but not least, a position recognition and monitoring system for cars uses web and GPS technology to track friends' and family members' activities and alert users when they are in the vicinity.

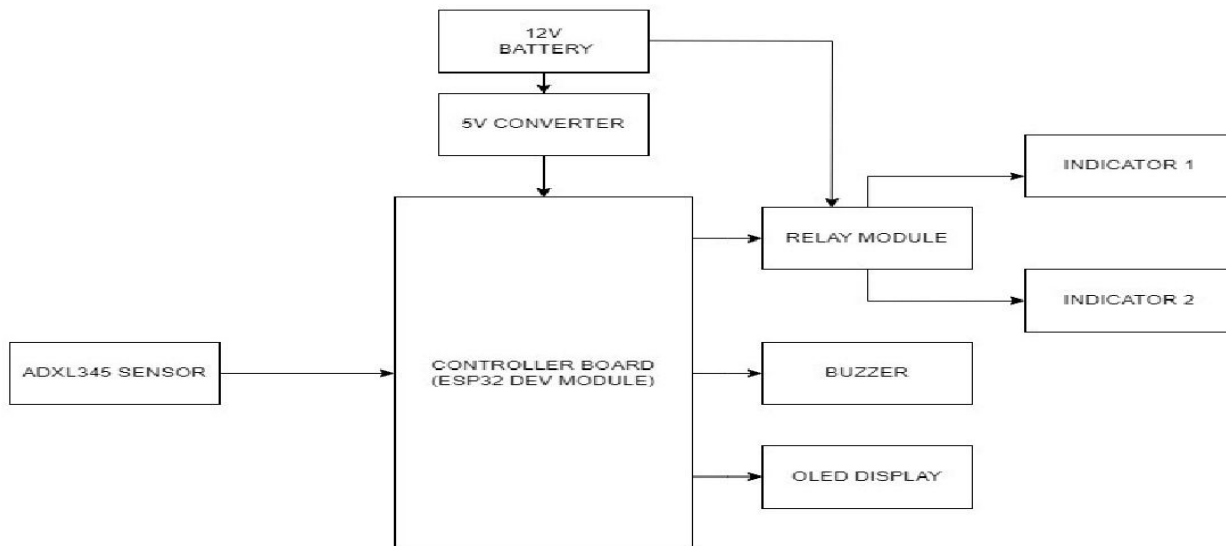
III. KEY HIGHLIGHTS

- 12V Battery: Supplies power to the entire system.
- 5V Converter: Converts the 12V battery voltage down to 5V to power the ESP32 and other components.
- ESP32 Dev Module (Controller Board): The brain of the system. It reads data from the accelerometer, processes it to detect turns, and controls the OLED display.
- ADXL345 Accelerometer: Detects tilt and acceleration in the vehicle, allowing the ESP32 to determine left and right turns.
- OLED Display: Shows a visual indication (e.g., arrow) of the intended turn signal (left or right).

IV. HARDWARE And SOFTWARE COMPONENTS

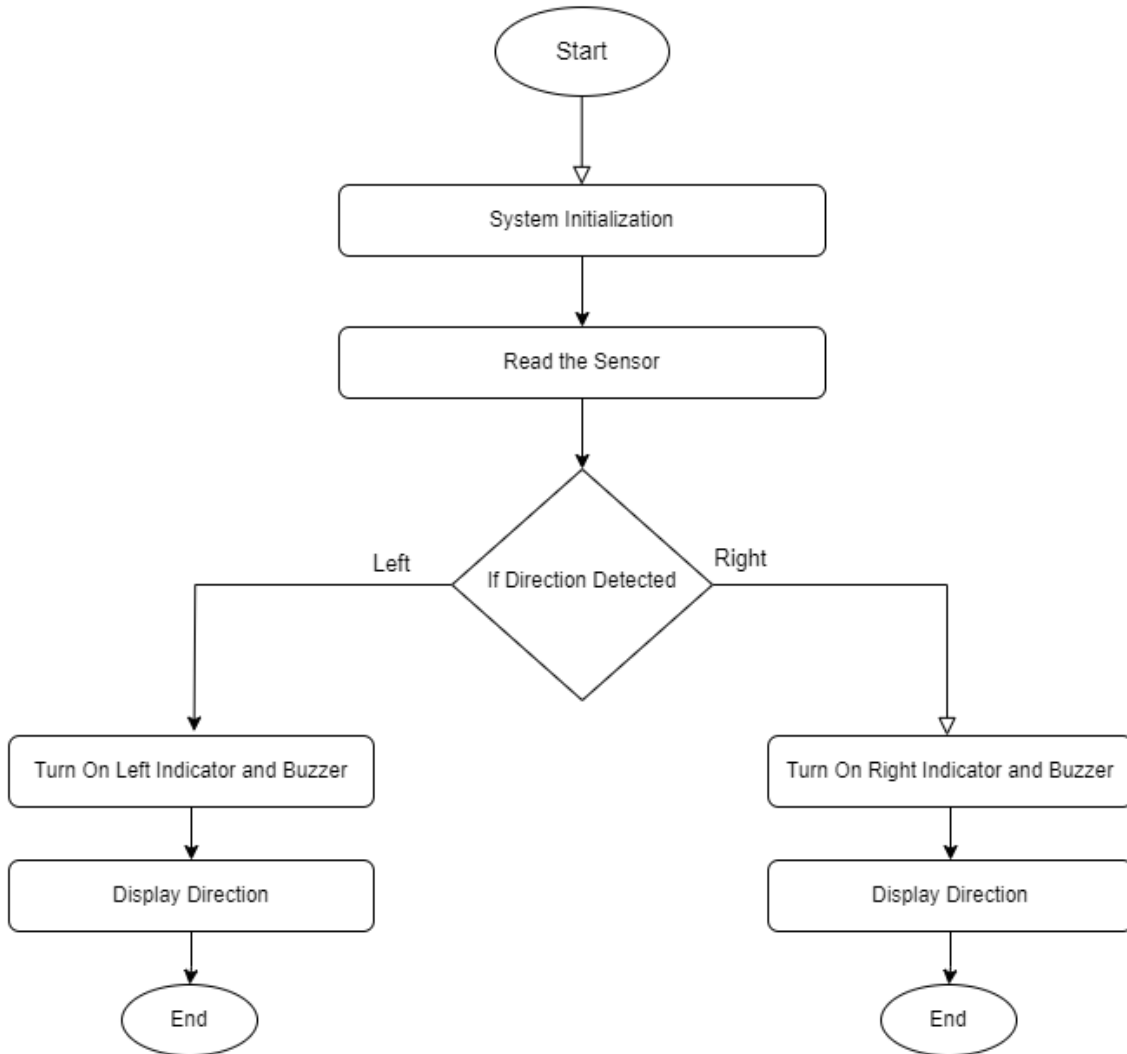
- ESP32 (any model with internet connectivity)
- Buck Converter (5v)
- Relay Module
- OLCD Display
- Buzzer for alerts
- Power supply for ESP32 and sensors
- ADXL 345 sensor
- Bike indicators
- Arduino ide

V. PROPOSED SYSTEM

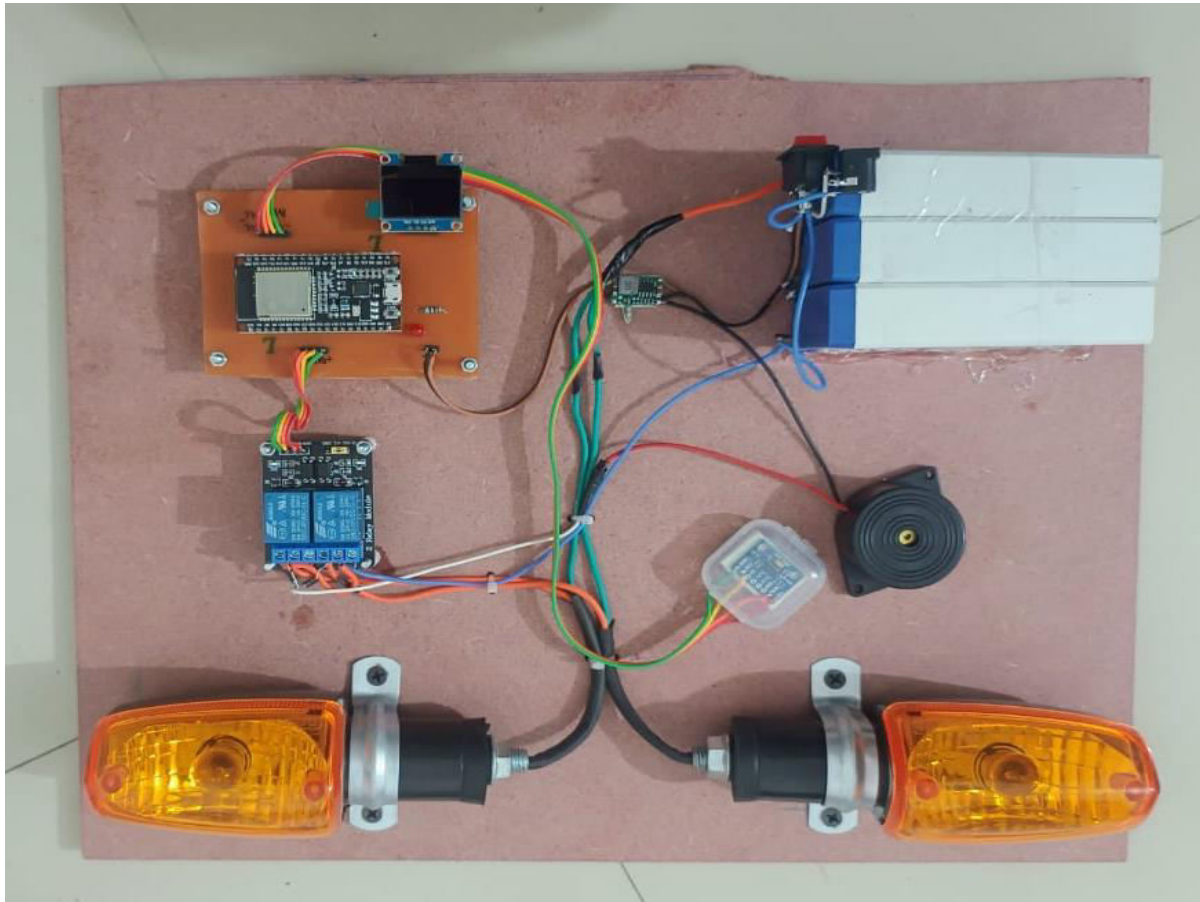


The relay uses the current supply for opening or closing switch contacts. Usually, this can be done through a coil to magnetize the switch contacts & drags them jointly once activated. A spring drives them separately once the coil is not strengthened. By using this system, there are mainly two benefits, the first one is, the required current for activating the relay is less as compared to the current used by relay contacts for switching. The other benefit is, both the contacts & the coil are isolated galvanic ally, which means there is no electrical connection among the

VI. FLOWCHART



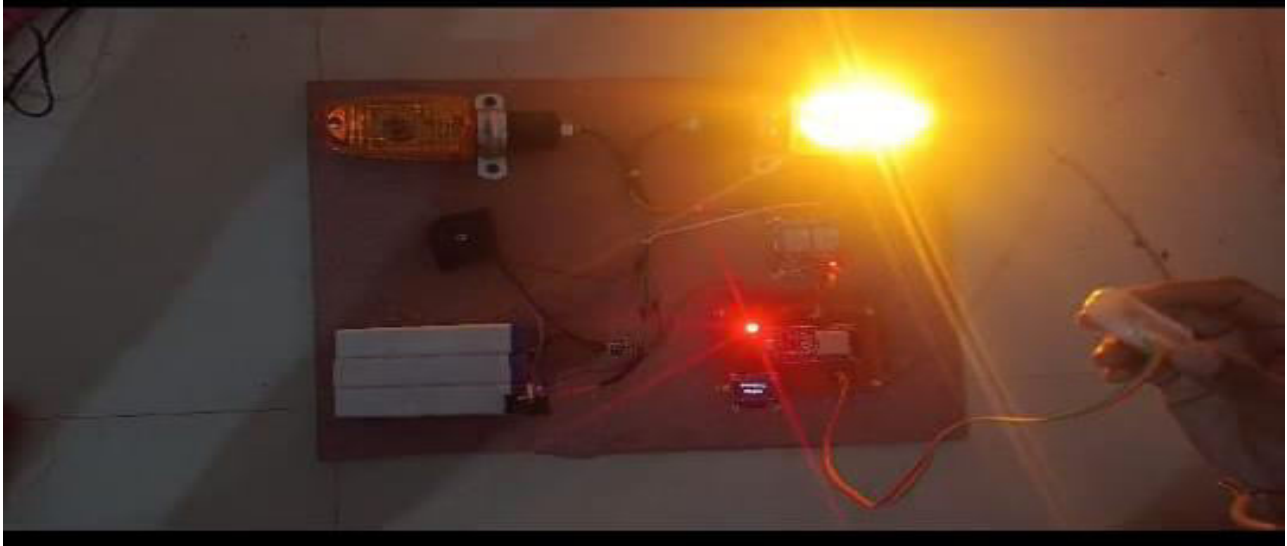
VII. RESULTS



ADXL345 Accelerometer module consists of 8 pins. Using the ADXL345 module with a microcontroller is very easy. Connect VCC and GND pins to 5V and GND pins of Microcontroller. Also, connect SCL and SDA pins to the SCL and SDA pins of ESP 32. The basic structure of the accelerometer consists of fixed plates and moving plates. When the acceleration is applied on an axis capacitance between fixed plates and moving plates is changed. This results in a sensor output voltage amplitude, which is proportional to the acceleration.



RIGHT INDICATOR WILL BE ON



LEFT INDICATOR WILL BE ON

VIII. CONCLUSION

In conclusion, the project "Advancing Roadway Safety through Intelligent Directional Vehicle Indicators" has successfully developed a robust system capable of providing accurate and timely directional indicators using an ESP32 controller and ADXL345 accelerometer. Through comprehensive testing and evaluation, the system has demonstrated its effectiveness in enhancing roadway safety by reducing the risk of accidents caused by signaling errors or ambiguity. While the system exhibits certain limitations, such as sensitivity to extreme conditions and vehicle dynamics, it represents the system holds promise for widespread adoption and has the potential to make a substantial impact on road safety.

ACKNOWLEDGMENT

We are extremely modest in our expression of thanks. To sum up the invaluable assistance and encouragement we received from numerous people in a few sentences would be unfair. However, words are the only medium through which one may communicate their emotions, and my gratitude is completely beyond words. We would be proud to use this chance to express our gratitude.

We would first want to express our gratitude to our dear guide, Prof. Swati Khawate, for his invaluable advice, tolerance, and support. He was always there to push me a little bit further so that I could do the work correctly and on schedule. He has consistently allowed us the autonomy to complete our dissertations and the opportunity to work under her supervision.

We are grateful that the Department of Electronics and Telecommunication's Head, Dr. Saniya Ansari mam, and all of the staff allowed us to continue working on our research in the necessary college laboratories and to use the tools needed for it. My family's and friends' support and affection motivated me to finish this dissertation. I'm grateful to everyone!

REFERENCES

1. Divakara Murthy K , Harshitha V and Pedapudi Ashok 2017 Design of Semi-Automatic Signal Indicator For Two Wheeler International Journal of Current Engineering and Scientific Research 4(5) 72-75 .
2. ZechunHuang , Dingfa Huang, Zhu Xu and Zhigen Xu 2011 GPS Vehicle Positioning Monitoring System Integrated with CORS and Mobile GIS International Conference of Environmental Science and Information

Application Technology (Elsevier) 10 2498-2504.

3. Yuan G, Zhang Z and ShangGuan W 2008 Research and Design of GIS in Vehicle Monitoring System International Conference on Internet Computing in Science and Engineering. 223-228.
4. Khalifa A. Salim and Ibrahim Mohammed Idrees 2013 Design and Implementation of Web-Based GPS-GPRS Vehicle Tracking System International Journal of Computer Science & Engineering Technology 3(12) pp. 443-448.
5. Mahesh Kadibagil and Guruprasad H S 2014 Position Detection and Tracking System International Journal of Computer Science and Information Technology and Security 40 67- 73.
6. Li Liu, Yanfang Jing , Zengxiao Chi, JianBang Chen and Chao Ma 2012 Design and Implementation of Android Phone Based Group Communication and Navigation System IEEE International Conference on Consumer Electronics, Communications and Networks 3174-3177.
7. Kai Qin, Jianping Xing, Gang Chen, Linjian Wang and Jie Qin 2008 The Design of Intelligent Bus Movement Monitoring and Station Reporting System IEEE International Conference on Automation and Logistics 2822-2827.
8. Zhanqiang Zhai and Shaohua Cai 2004 GPRS/GPS/GIS Based Vehicle Navigation And Monitoring System Bulletin Of Surveying And Mapping 34-36.
9. Xu Bin and Guo Bingxuan 2007 Implementation of Vehicle Navigation System Based On Mobile GIS Geospatial Information 5 83-85.
10. Zhang Jinming and Fu Yongheng 2007 Design And Implementation of GPS/GPRS-Based Location Information Service System Bulletin of Surveying and Mapping 11 30-33.
11. Usha S , Kuppaswami S , Karthik.M 2018 A new enhanced authentication mechanism using session key agreement protocol Cybernetics and Information Technologies 18(4) 61-74.
12. Zhenglong Yan and Zhengjiang Chen 2008 Design and implementation of vehicle monitoring system based on GIS/GPS/GSM/GPRS Journal of Northwest University (Natural Science Edition), 38(1) 127-130.
13. Selvakarthi D, Sivabalaselvamani D, Nivetha V Pratheep S Pravin S and Thiyaneshwaran S R 2020 A Novel Approach Using Sensor Technologies For Enhancing Accident Safety Assistance System In Different Environments International Journal of Scientific & Technology Research 9(2) 2130-2134.



INTERNATIONAL
STANDARD
SERIAL
NUMBER
INDIA



INTERNATIONAL JOURNAL OF INNOVATIVE RESEARCH

IN SCIENCE | ENGINEERING | TECHNOLOGY

 9940 572 462  6381 907 438  ijirset@gmail.com



www.ijirset.com

Scan to save the contact details