



e-ISSN: 2319-8753 | p-ISSN: 2347-6710

# IJRSET

International Journal of Innovative Research in  
**SCIENCE | ENGINEERING | TECHNOLOGY**



# INTERNATIONAL JOURNAL OF INNOVATIVE RESEARCH

IN SCIENCE | ENGINEERING | TECHNOLOGY

Volume 13, Special Issue 1, April 2024

**ISSN** INTERNATIONAL  
STANDARD  
SERIAL  
NUMBER  
INDIA

**Impact Factor: 8.423**

9940 572 462

6381 907 438

[ijirset@gmail.com](mailto:ijirset@gmail.com)

[www.ijirset.com](http://www.ijirset.com)

# Safe Drive and Deep Behaviour Analysis and Detection Using Learning Method Acceptance Ratio

Dr. S. Sumathi.ME. PHD, B. Dhanush Kumar<sup>2</sup>, R. Guna Bala<sup>3</sup>, S. Hariprakash<sup>4</sup>,  
C. Jeeva<sup>5</sup>

Professor, Department of Electronics and Communication Engineering, Adhiyamaan College  
of Engineering, Krishnagiri, Tamil Nadu, India<sup>1</sup>

U.G Scholars, Department of Electronics and Communication Engineering, Adhiyamaan  
College of Engineering, Krishnagiri, Tamil Nadu, India<sup>2,3,4,5</sup>

**ABSTRACT:** People currently experience a high number of accidents while traveling by car. Human error causes numerous incidents and fatalities on Indian roads due to the growing number of vehicles and the lax enforcement of traffic laws. In those mishaps, they also lose our lives and our possessions. This leads to accidents where drivers are intoxicated and disregard traffic laws. This study proposes the use of a Multi-tasking Convolutional Neural Network (MConNN) model to identify driver weariness and drowsiness. The driver's behaviour model makes use of the Eye and Driver Drunk features. Driver weariness is tracked by changes to these features. This project proposes a novel detection system called MConNN, which can accurately perform real-time localization, driver state classification, and driver sleepiness. Instantaneous. Within the field of computer vision, real-time eye tracking and detection is an active area of research. For facial alignment, eye tracking and localization can be helpful. The length of the eyes closed divided by the percentage of closed eyes (PEC) yields the driver's weariness. It relies on a hardware system that uses a camera to capture a driver's image in real-time, as well as software that keeps an eye out for potential collisions. With the help of a webcam, we can implement this project in real-time. We can also add an embedded application to the system to slow down and stop the car when we detect unusual activity.

**KEYWORDS:** Alcohol Detection, Face, Eye, Pulse Rate, and Arduino Nano

## I. INTRODUCTION

Driver error is the most responsible factor in each car collision that poses a risk to public safety. For a variety of reasons, many drivers are unable to manage their cars, which can result in serious collisions and occasionally fatalities. Numerous factors, including intoxication, speeding, and numerous distractions from the road, such as texting or conversing with others, playing with kids, etc., contribute to car accidents. Sleeping while operating a vehicle is one of the crucial elements. People are aware of the risks associated with operating a car while intoxicated, but they are unaware of how dangerous driving when fatigued is. According to a 2015 report by India's Ministry of Road Transport and Highway, there are approximately 1,374 accidents and nearly 400 fatalities per day. Approximately 57 traffic accidents result in the deaths of 17 persons every hour. car accidents claim the lives of 54.1% of persons between the ages of 15 and 34.

A plan was developed by the Indian government, the Ministry of Road Transport, and the Highway Government of India to reduce motorway accidents and losses by 50% by 2020. Car crashes appear to be one of the main causes of community health issues worldwide. In India, there were about 5 lakh traffic accidents in 2015. To prevent

accidents, it is important to keep an eye on a driver's tiredness. If a tired driver nods off while driving, they will be unable to control the vehicle and may not be able to react quickly. A plan was developed by the Indian government, the Ministry of Road Transport, and the Highway Government of India to reduce motorway accidents and losses by 50% by 2020. Car crashes appear to be one of the main causes of community health issues worldwide. In India, there were about 5 lakh traffic accidents in 2015. To prevent accidents, it is important to keep an eye on a driver's tiredness. If a tired driver nods off while driving, they will be unable to control the vehicle and may not be able to react quickly.

When a motorist nods off while operating a vehicle, they lose control of the vehicle and frequently cause an accident involving another car or an immovable item. The degree of driver drowsiness needs to be watched to stop these tragic collisions. The following metrics have been extensively employed to track fatigue.

A number of measures are continuously tracked, including lane departures, steering wheel movement, acceleration pedal pressure, etc., and any variation beyond a predetermined threshold suggests a markedly higher likelihood that the driver is sleepy. A camera records the driver's actions, such as blinking or closing their eyes, and notifies them if any of these signs of tiredness are seen [7-9]. Numerous researchers have examined the relationship between physiological signals—such as the electrocardiogram (ECG), electromyogram (EMG), electrooculogram (EOG), and electroencephalogram (EEG)—and driver fatigue.

## II. RELATED WORK

Improving road safety requires not just enforcing safe driving standards but also identifying dangerous behaviours. The convergence of advanced learning techniques with driving behaviour analysis has attracted significant interest from both scholars and practitioners in the past few years. The majority of early behaviour analysis research used oversimplified models, like rule-based systems or elementary statistical techniques. Although these methods offered valuable insights, they frequently lacked the complexity required to accurately represent the complex subtleties of driving behaviour in many real-world scenarios. The study of driving behaviour analysis has greatly advanced with the introduction of machine learning, especially deep learning approaches. Convolutional neural networks (CNNs) and recurrent neural networks (RNNs) have developed as powerful tools for processing complicated sensor data streams from vehicles and recognizing patterns indicative of safe or dangerous driving behaviours.

Numerous research studies have exhibited the effectiveness of deep learning models in identifying a broad range of driving behaviours, such as abrupt lane changes, abrupt accelerations or decelerations, and instances of driving while distracted. Through the utilization of extensive datasets and inventive model architectures, these investigations have attained exceptional degrees of precision and applicability under diverse driving circumstances. Notwithstanding these technological developments, human acceptability and trust must be taken into account when implementing AI-driven safety solutions, according to new research.

The perceived trustworthiness, interpretability of algorithmic conclusions, and privacy issues are major obstacles to the mainstream adoption of these technologies. Researchers have suggested strategies that give transparency and interpretability in model design priority to overcome these difficulties. Through the utilization of strategies like explainable AI, attention mechanisms, and human-in-the-loop methodologies, researchers want to improve users' comprehension of the underlying algorithms and build confidence in their abilities.

## III. METHODOLOGY

Driving at night has become dangerous, with many accidents and worries for both the general public and transportation authority's due to the rise in the movement of large vehicles. After a few days of nonstop driving, the

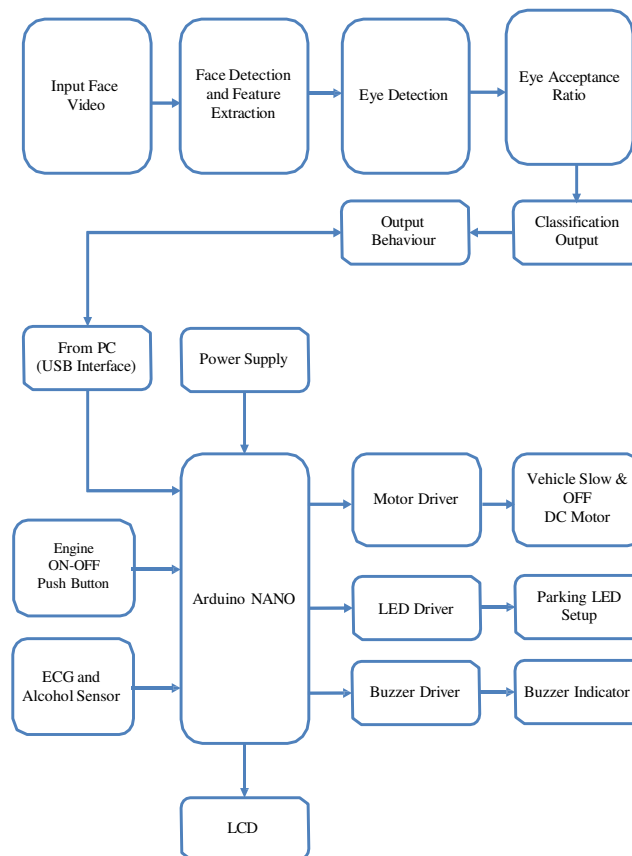


drivers are compelled to travel with no rest, which negatively affects their ability to drive and causes a decrease in reflexes, which ultimately results in accidents. Fatigue is identified as the primary cause of drowsiness in the majority of accident instances. The word "fatigue" describes a group of symptoms that include subjective feelings of sleepiness and diminished performance. Notwithstanding the extensive study conducted, there is still no consensus definition for the term "fatigue."

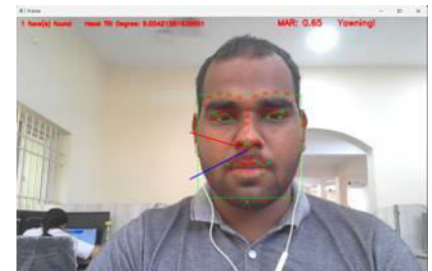
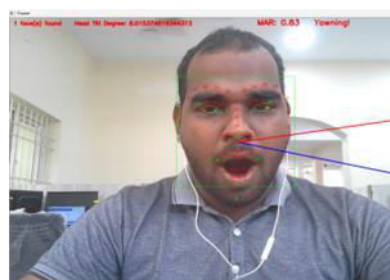
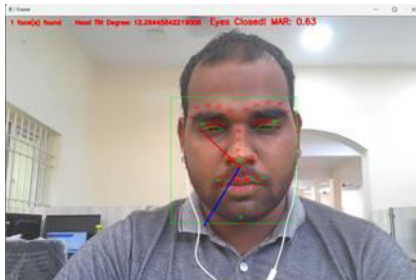
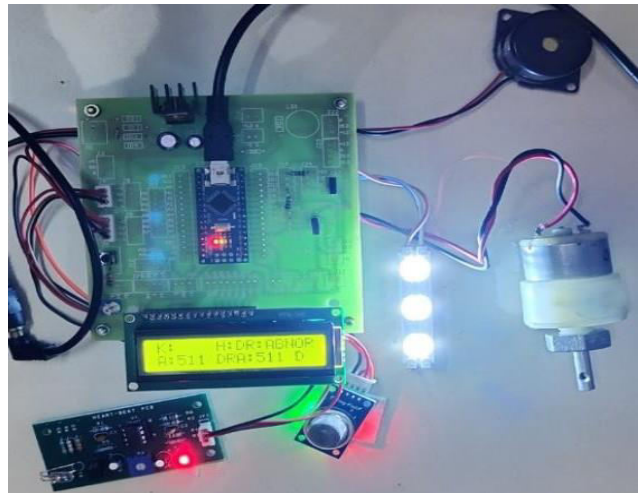
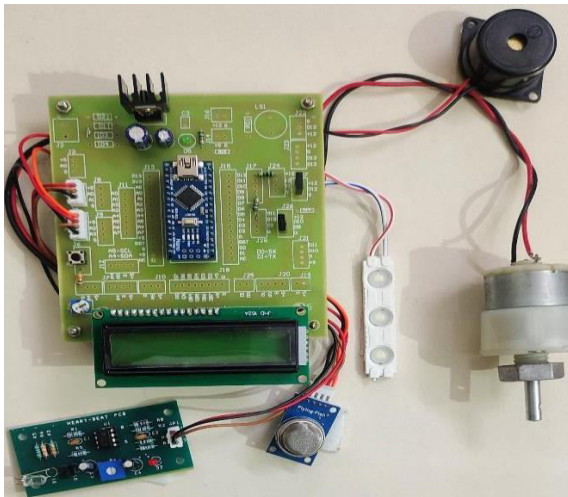
There are various types of exhaustion from the perspective of each organ's functionality, such as in the following situations: There are four types of physical fatigue: 1) local (in a skeletal or ocular muscle), 2) general (after severe manual labour), 3) central nervous (sleepiness), and 4) mental (no energy to do anything). With the help of this suggested approach, we can track eye states more precisely and use a system for facial detection utilizing linear discriminate analysis.

An alert for remedial action will sound if the driver exhibits unusual behaviour, such as closing their eyes. Once the camera has correctly located the driver's head and eyes in an image, the system moves on to the analysis phase. Next, a variety of image processing algorithms are used to pre-process this image to detect drowsiness. Lastly, offer a facial recognition alert system via email, SMS, and voice alerts for the admin. Additionally, it uses embedded technology to lower the vehicle's speed to keep the driver safe from collisions.

**BLOCK DIAGRAM**



#### IV. EXPERIMENTAL RESULTS



#### V. CONCLUSION

The device uses the driver's eye conditions to determine whether or not they are sleepy. Its foundation is facing detection utilizing the well-known cascaded algorithm. The suggested crop Eye algorithm divides the face into distinct segments to identify the left and right eyes. Intensity values are used to detect whether an eye is open or closed, and the distance between the lash and eyebrow is calculated. Eyes are closed if the computed distance exceeds the threshold value; else, they are open. If eyes are discovered to be closed for several frames in a row, an alarm is set off. The suggested approach was evaluated in a lab setting and in a video sequence that was captured inside the car. The suggested system has less processing complexity and operates in real time. That makes it appropriate for use in a surveillance setting as well. For various faces, the method generates findings that are 90% correct.

#### REFERENCES

- [1] B. K. Dar, M. A. Shah, S. U. Islam, C. Maple, S. Mus Sadiq, and S. Khan, "Delay-Aware Accident Detection and Response System Using Fog Computing," IEEE Access, 2019
- [2] Y. Ji, S. Wang, Y. Zhao, J. Wei, and Y. Lu, "Fatigue state detection based on multi-index fusion and state recognition network," IEEE Access, vol. 7, pp. 64136–64147, 2019.
- [3] Koichi Fujiwara, Erika Abe, Keisuke Kamat, Chikao Nakayama, Yoko Suzuki, Toshi taka Yamakawa, "Heart

Rate Variability-based Driver Drowsiness Detection and its Validation with EEG,” IEEE Transactions on Bio. Engg. Vol. 66, NO. 6, June 2019

- [4] S. Mühlbacher-Karrer et al., “A Driver State Detection System— Combining a Capacitive Hand Detection Sensor with Physiological Sensors,” IEEE Trans. Instrum. Meas., vol. 66, no. 4, pp. 624–636, Apr. 2017
- [5] K. Fujiwara et al., “Epileptic seizure prediction based on multivariate statistical process control of heart rate variability features,” IEEE Trans. Biomed. Eng., vol. 63, no. 6, pp. 1321–1332, Jun. 2016.

### BIOGRAPHY



Dr.S. Sumathi, HOD, Electronics and Communication Engineering Department,  
Adhiyamaan college of Engineering, Hosur



Dhanush Kumar B, Electronics and Communication Engineering Department, Adhiyamaan  
college of Engineering, Hosur



Guna Bala R, Electronics and Communication Engineering Department, Adhiyamaan  
college of Engineering, Hosur



Hari Prakash S, Electronics and Communication Engineering Department, Adhiyamaan  
college of Engineering, Hosur



Jeeva C, Electronics and Communication Engineering Department, Adhiyamaan college of  
Engineering, Hosur





INTERNATIONAL  
STANDARD  
SERIAL  
NUMBER  
INDIA



# INTERNATIONAL JOURNAL OF INNOVATIVE RESEARCH

IN SCIENCE | ENGINEERING | TECHNOLOGY

 9940 572 462  6381 907 438  [ijirset@gmail.com](mailto:ijirset@gmail.com)



[www.ijirset.com](http://www.ijirset.com)

Scan to save the contact details