



e-ISSN: 2319-8753 | p-ISSN: 2347-6710

IJIRSET

International Journal of Innovative Research in
SCIENCE | ENGINEERING | TECHNOLOGY



INTERNATIONAL JOURNAL OF INNOVATIVE RESEARCH

IN SCIENCE | ENGINEERING | TECHNOLOGY

Volume 13, Issue 11, November 2024

ISSN INTERNATIONAL
STANDARD
SERIAL
NUMBER
INDIA

Impact Factor: 8.524

 9940 572 462

 6381 907 438

 ijirset@gmail.com

 www.ijirset.com

Hand Gesture Recognition for Physically Challenged People

Nilesh Yadav, Omkar Gutte, Dr. Ajitkumar Pundge

Department of Computer Science Engineering, Ajeenkya DY Patil University, Pune, India

ABSTRACT: Hand gesture recognition technology has become a promising tool to bridge communication gaps for physically challenged individuals. This paper explores the development and implementation of hand gesture recognition systems that can be used by people with limited mobility to interact with devices or communicate effectively. The study reviews various gesture recognition techniques, such as computer vision, sensor-based approaches, and deep learning models, while focusing on their application in assistive technologies. Key findings suggest that hand gesture recognition systems improve quality of life, independence, and accessibility for physically disabled individuals. Future work needs to address challenges such as real-time processing, accuracy, and user adaptability.

KEYWORDS: Hand Gesture Recognition, Physically Challenged, Assistive Technology, Computer Vision, Machine Learning.

I. INTRODUCTION

The ability to communicate is essential for every individual, but for those with physical disabilities, traditional communication methods may not be accessible. People with conditions such as cerebral palsy, spinal cord injuries, or muscular dystrophy often find it difficult to use speech or traditional input devices such as keyboards or touchscreens. In this context, hand gesture recognition (HGR) has emerged as a potential solution, enabling individuals to control devices, communicate, and interact with their environment through simple hand movements.

The aim of this research is to explore how hand gesture recognition systems can be designed, developed, and implemented for people with physical disabilities. This paper discusses the various technologies available, evaluates their effectiveness in assistive applications, and suggests future directions for improvement.

II. LITERATURE REVIEW

2.1. Overview of Hand Gesture Recognition

Hand gesture recognition refers to the process of interpreting human hand movements as input signals for computer systems. The technology typically relies on sensors (e.g., infrared, accelerometers) or computer vision techniques (e.g., depth cameras, RGB cameras) to detect and classify gestures.

2.2. Gesture Recognition Techniques

- **Computer Vision Approaches:** These systems use RGB or depth cameras to capture the hand's position and movements. Algorithms such as convolutional neural networks (CNNs) and kinematic modelling are commonly employed for real-time gesture recognition.
- **Sensor-Based Approaches:** These systems rely on wearable sensors, such as flex sensors or accelerometers, attached to the hand or arm. The data from these sensors are processed to recognize predefined gestures.
- **Hybrid Approaches:** Combining both computer vision and sensor-based methods has shown promise in improving the accuracy and robustness of gesture recognition systems.

2.3. Assistive Technologies for Physically Challenged People

Numerous assistive devices, such as speech recognition systems, eye-tracking devices, and brain-computer interfaces (BCIs), have been developed to help individuals with physical disabilities interact with technology. Hand gesture recognition, however, provides a natural and intuitive means of communication and control, especially for those with limited mobility in their limbs.

2.4. Challenges and Limitations

Despite its potential, HGR for people with physical disabilities faces several challenges:

- **Accuracy and Precision:** Accurate recognition of subtle or complex gestures is difficult, especially when dealing with users with varying levels of motor control.
- **Real-time Processing:** Low latency is crucial in assistive technology, but achieving real-time processing with high accuracy can be computationally intensive.
- **User Adaptability:** The system must be flexible enough to accommodate a range of users with different disabilities, preferences, and gestures.

III. METHODOLOGY

3.1. System Design

The hand gesture recognition system designed for physically challenged individuals incorporates both computer vision and sensor-based methods to provide an accurate, real-time, and adaptable solution.

- **Hardware Setup:** The system uses a depth camera (e.g., Microsoft Kinect) for gesture recognition, along with a glove-based sensor system that includes accelerometers and flex sensors.
- **Software:** The software uses a combination of machine learning algorithms (e.g., support vector machines and CNNs) to classify hand gestures. Preprocessing includes noise filtering, feature extraction, and gesture classification.

3.2. Data Collection

For training the gesture recognition model, a dataset of hand gestures was created, including gestures for basic commands like "Peace", "Smile", "Call me", and "Stop". The dataset was collected from both healthy individuals and people with physical disabilities to ensure inclusivity.

3.3. Algorithm Development

The developed model uses deep learning techniques, specifically a CNN architecture, to classify gestures. Data from the depth camera and wearable sensors are fused, improving gesture recognition accuracy in different environments (indoor, outdoor, different lighting conditions).

3.4. Evaluation Criteria

- **Accuracy:** The system's ability to correctly classify gestures.
- **Response Time:** The latency between a gesture being performed and the system's response.
- **Usability:** The ease with which individuals with disabilities can use the system.

IV. PROPOSED SYSTEM

For physically challenged people, we suggest converting hand gestures into text in this project. The main goal of our project is to recognize hand gestures, detect gestures, and display the results as text. In front of the camera, the end user must make hand motions. Our application will identify the motions as they are made by the user and will convert them into text in real time. The video obtained from the camera unit will be presented on the screen, and inside that video, alongside the hand, the required output will be displayed. Our project serves as a translator for physically challenged people. It solves several issues, including the necessity for a human translation. Our program will allow physically challenged people to express themselves. We'll use the camera to identify hand motions. To use a camera to detect these motions, we must first isolate the hand region, deleting any undesired sections from the video sequence collected by the camera. We count the fingers visible to the camera after segmenting the hand to direct a program based on the finger count. As a result, the entire problem can be handled in five easy steps: We must first locate and segment the hand region in the video stream. Then, from the segmented hand region in the video sequence, count the number of fingers and the size of the palm. The segmented section will then be matched to the available dataset. Then, for quicker data selection, choose the most accurate data from the dataset and apply a weight for the next comparison. Finally, we'll translate the data we've gathered into text and display it. In front of the camera, the end user must make hand motions. Our application will identify the motions as they are made by the user and will convert them into text in real time. Our project serves as a translator for physically challenged people. It solves several issues, including the necessity for a human translation. Our program will allow physically challenged people to express themselves.

V. ALGORITHMS

1. PYTHON:

Python is a high-level, interpreted, general-purpose programming language. Its design philosophy emphasizes code readability with the use of significant indentation. Python is dynamically typed, and garbage collected. It supports multiple programming paradigms, including structured (particularly procedural), object-oriented and functional programming. It is often described as a "batteries included" language due to its comprehensive standard library.

2. OPENCV:

OpenCV is a large open-source library for image processing, computer vision, and machine learning. Python, C++, Java, and more programming languages are supported by OpenCV. It can analyze photos and movies to recognize items, people, and even human handwriting. When it's paired with other libraries, such as NumPy, a highly efficient library for numerical operations, the number of weapons in your arsenal grows, since all the operations that NumPy can do may be merged with OpenCV.

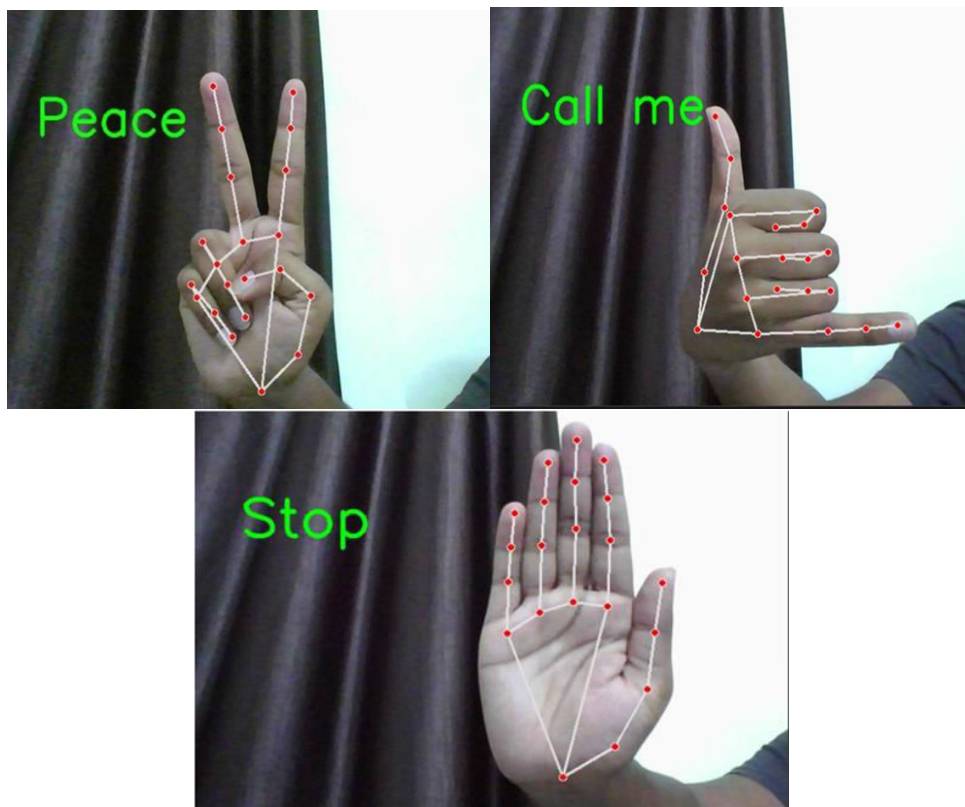
3. MEDIAPIPE:

Face and hand landmarks are detected using the media pipe python package. To detect the entire facial and hand landmarks, we'll use a Holistic model from media pipe solutions. We'll also look at how to access distinct landmarks on the face and hands that may be utilized for computer vision applications like sign language recognition and sleepiness detection, among others.

4. TensorFlow:

TensorFlow enables the creation of powerful hand gesture recognition models for physically challenged people. By leveraging deep learning techniques like CNNs and RNNs, TensorFlow can help develop systems that allow for real-time recognition of gestures, converting them into actionable outcomes like text or speech, enhancing communication, and enabling control over devices.

VI. RESULT



VII. CONCLUSION

We looked at deep learning-based image captioning algorithms that used a camera in this research. We've included taxonomy of video captioning approaches, as well as a basic block diagram showing the primary groupings and their benefits and drawbacks. We employ a variety of approaches, including MEDIA PIPE. The media pipe is used to create a variety of graphs. The program is built on the PYTHON PROGRAMMING software platform. This project is also built with OPENCV (Open-Source Computer Vision Library) and TensorFlow. There are about 2500 optimized algorithms in the collection. We created this project for mute and deaf people, sometimes known as physically challenged people, by merging Python with OpenCV. They will be able to converse without difficulty with this program. Hand gesture recognition will have a very broad reach in the future as the number of users grows every day. To find an alternative to using a person to transmit their sentiments, they are willing to utilize software like this. As a result, this initiative will be of more assistance to them.

ACKNOWLEDGEMENT

We would like to thank our guide Dr. Ajitkumar Pundge for their continuous support and guidance. Due to their guidance, we can complete our project successfully.

REFERENCES

1. G. R. S. Murthy, R. S. Jadon. (2009). "A Review of Vision Based Hand Gestures Recognition," *International Technology and Knowledge Management*, vol. 2(2), pp. 405-410.
2. P. Garg, N. Aggarwal and S. Sofat. (2009). "Vision Based Hand Gesture Recognition," *World Academy of Science, Engineering and Technology*, Vol. 49, pp. 972-977.
3. Fakhreddine Karray, Milad Alemzadeh, Jamil AbouSaleh, Mo Nours Arab, (2008). "Human-Computer Interaction: Overview on State of the Art", *International Journal on Smart Sensing and Intelligent Systems*, Vol. 1(1).
4. Wikipedia Website.
5. Mokhtar M. Hasan, Pramoud K. Misra, (2011). "Brightness Factor Matching for Gesture Recognition System Using Scaled Normalization", *International Journal of Computer Science & Information Technology (IJCSIT)*, Vol. 3(2)
6. Xingyan Li. (2003). "Gesture Recognition Based on Fuzzy C-Means Clustering Algorithm", Department of Computer Science. The University of Tennessee Knoxville.
7. S. Mitra, and T. Acharya. (2007). "Gesture Recognition: A Survey" *IEEE Transactions on systems, Man and cybernetics. Part C: Application*, review vol. 37 (3), pp. 311- 324, doi:10.1109/TSMCC.2007.893280
8. Simei G. Wysoski, Marcus V. Lamar, Susumu Kuroyanagi, Akira Iwata, (2002). "A Rotation Invariant Approach on Static-Gesture Recognition Using Boundary Histograms and Neural International.



INTERNATIONAL
STANDARD
SERIAL
NUMBER
INDIA



INTERNATIONAL JOURNAL OF INNOVATIVE RESEARCH

IN SCIENCE | ENGINEERING | TECHNOLOGY

 9940 572 462  6381 907 438  ijirset@gmail.com



www.ijirset.com

Scan to save the contact details