



e-ISSN: 2319-8753 | p-ISSN: 2347-6710

IJIRSET

International Journal of Innovative Research in
SCIENCE | ENGINEERING | TECHNOLOGY



INTERNATIONAL JOURNAL OF INNOVATIVE RESEARCH

IN SCIENCE | ENGINEERING | TECHNOLOGY

Volume 13, Issue 11, November 2024

ISSN INTERNATIONAL
STANDARD
SERIAL
NUMBER
INDIA

Impact Factor: 8.524

9940 572 462

6381 907 438

ijirset@gmail.com

www.ijirset.com

Detection and Identification of Vehicles SVM Method in Limited Surroundings

Surya P, Anjaiah Vasipalle, Dr.U.Pavan Kumar, Ch.Arun Prakash

Assistant Professor, Department of ECE, RISE Krishna Sai Prakasam Group of Institutions, Andhra Pradesh, India

Associate Professor, Department of ECE, PBR Visvodaya Institute of Technology & Science, Andhra Pradesh, India

Associate Professor, Department of CSE - Data Science, Dayananda Sagar University, Bangalore, Karnataka, India

Assistant Professor, Department of ECE, RISE Krishna Sai Prakasam Group of Institutions, Andhra Pradesh, India

ABSTRACT: Identification and detection of vehicles in rush hour video surveillance recordings is essential to automate the system of surveillance and furthermore to manufacture a keen transportation system. In this paper a hearty strategy to detect and identification of vehicles is proposed which arrangements with issue like change in brightening. Background subtraction is done utilizing both Gaussian Mixture Model and Visual Background Extractor and supports dynamic changes in background. Vehicles are identified by finding shapes in the picture frame. Vehicles are followed by assigning out remarkable ID for every vehicle. Distance between the centroid of distinguished vehicle and existing vehicles is determined. On the off chance that the separation is more noteworthy than edge esteem then vehicle is viewed as arrived recently and a one of a kind ID is allotted for further following. Else, it is the vehicle will get a similar ID as in past frame. Detected-vehicle is ordered utilizing Support Vector Machine in each casing and ultimate conclusion is taken when the vehicle is going to exit from the scene.

KEYWORDS: Classification of vehicle, Supported Vector machine, Video surveillance, Vehicle identification.

I. INTRODUCTION

Establishment of cameras in a large portion of the streets has made tremendous look into open door for robotizing traffic observation. This has brought about numerous algorithms for distinguishing, counting and grouping the vehicles. Every one of these algorithms have their very own focal points and inconveniences. Emerging up a powerful technique which is immune to change climatic condition, illumination and so forth has dependably been a challenge. Despite the fact that there are numerous algorithms with differed rationale also, parameters, the greater part of them have neglected to address the multifaceted nature hidden the test. At the point when a couple of them do prevail in tending to the issue, they fall behind in productivity of the outcome. Maybe a couple techniques focus on following the item utilizing entrenched calculations like Kalman Filter and few are going for vehicle classification. In this manner we need a thorough technique that can distinguish the vehicles in the camera caught outline, arrange the recognized vehicles into predefined classes and check and track the same. This paper proposes an effective technique to distinguish the vehicles in a traffic observation video by applying the background sub-traction also, group the recognized objects utilizing Support Vector Machine. The classifi-ed objects are then given an unique-id and followed by consistent identification and centroid computation.

II. RELATED WORK

The issue of vehicle identification and order can be drawn nearer in various ways. One of the ways is to utilize Haar classifier as portrayed in the paper by Momin et al. [7]. This strategy utilizes Haar-training with ada-boost for classification. The qualities of the vehicles like shading, speed, date, time and direction of the movement are extricated and the equivalent is utilized for looking through the vehicle later. In any case, Haar classifier requires precise dataset and there is dependably a danger of false alert. Since the strategy utilizes various sizes of window more than once for vehicle arrangement, it is costly as far as computational time and can't be utilized continuously condition. Another methodology is background displaying. Paper proposed by Jun-Wei Hsieh et al. [9] uses frame-differencing to identify the vehicles. Counting of the vehicles going through a position is found and its histogram is obtained. From this data path isolating lines are found. Shadow expulsion is performed with the assistance of street path identification and path

width computation. Hence, it restrains the application in nation like India where the perceivability of paths might be poor.

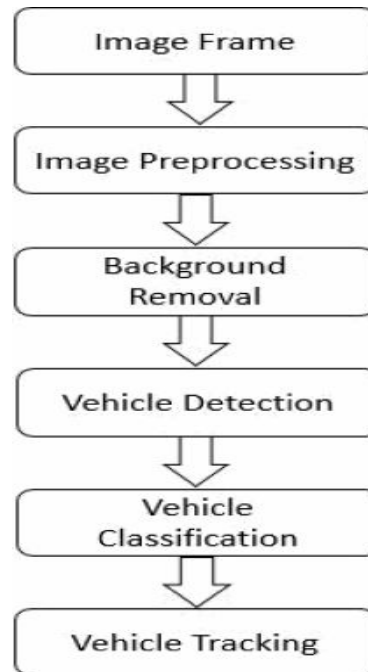


Fig.1. Methodology

Khan et al. [4] proposed a technique to identify and characterize items utilizing 3D models. Data like height over the ground, ground inspecting separation, geo-area and turn data are gotten. This data is utilized to make-up a 3D model. Obviously, the precision of the framework relies upon the exactness of structure 3D models that is bolstered for preparing. Since the pictures are acquired from the automaton, producing a 3D model of the vehicle is anything but a major ordeal as we can get the picture of a similar vehicle in various view points. Be that as it may, building a 3D model from a solitary view point utilizing a solitary camera as in rush hour gridlock reconnaissance framework is extremely troublesome and costly. Kafai, et al. [5] proposed Bayesian characterization framework with tail light and vehicle measurement being the highlights. Tail light width, separate from tag and edge between the tail light and tag. It utilizes two phase arrangement. In light of the separation of vehicle to its closest neighbor, vehicle is named known or obscure. In the event that the vehicle is known, at that point Dynamic Bayesian system is utilized for second dimension arrangement. In this way it is limited to the field perspective on the camera to back side of the vehicle.

III. METHODOLOGY

The frames of the observation video are handled one by one. Connection between identification edges is utilized for better discovery and order of vehicles. The stream graph in Fig 1 demonstrates the technique proposed in this paper and similar advances are rehashed for every one of the edges. The total procedure can be comprehensively partitioned into four stages. They are Background Subtraction, Vehicle Detection, Vehicle Classification and Vehicle Tracking.

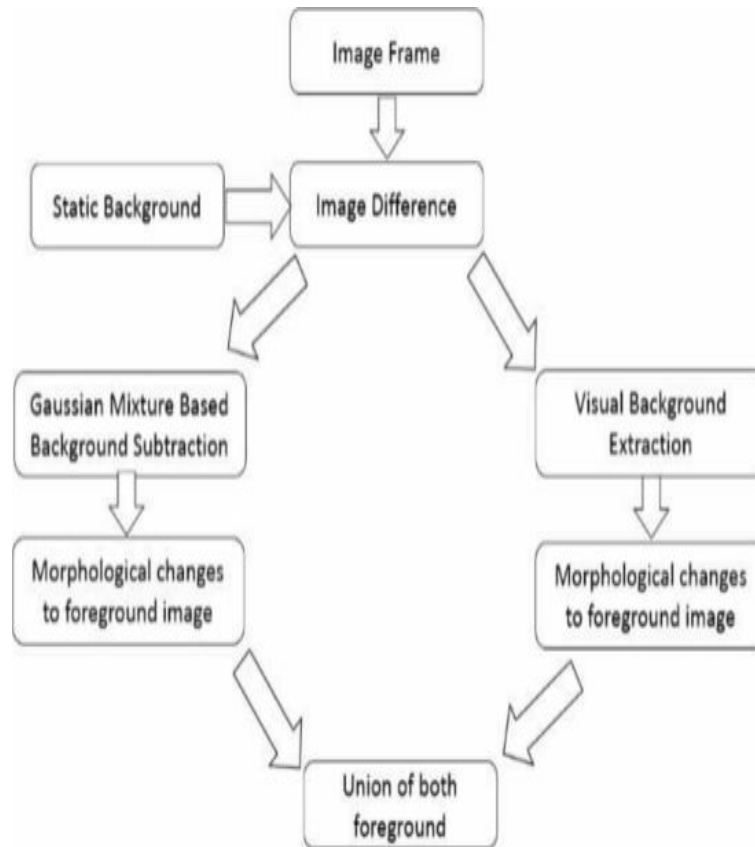


Fig .2. The Model of Background Subtraction

A picture casing contains the total street scene caught from the camera which may incorporate close-by structures, trees, columns, traffic sign sheets and so on. Since we are intrigued uniquely with regards to moving vehicles, we have to expel these undesirable items from the picture outline. So background subtraction is performed. The yield got after foundation subtraction will have just the moving vehicles. Vehicle identification is finished by extricating the individual vehicle shape from the casing. In vehicle characterization, the recognized vehicle is grouped into predefined classification dependent on its component. Vehicle following spotlights on distinguishing recently arrived vehicle and mapping existing vehicles of current edge to their situation in past edge. A rundown of the considerable number of vehicles existing in the casing is kept up and for another vehicle an interesting ID is relegated before adding it to the rundown. The current vehicles are refreshed with their situation in the present casing. Every one of these means are clarified in detail in the following-section.

3.1 Background Subtraction

Background subtraction should be possible either by expelling the background and get the required object or by separating the closer view dependent on highlights. Background subtraction is a significant advance whose outcome ought to be as exact as conceivable to make the recognition of object. The proposed strategy utilizes both background expulsion and closer view extraction and takes the association of individual yield to get the last forefront picture as appeared in Fig 2. At first, a static background of the scene is subtracted from the present frame which results in a forefront. At the point when there are changes out of sight, the yield got will contain clamor and undesirable pixels that are not the piece of closer view. Thus to help dynamic background we utilize Gaussian Mixture Model(GMM) and Visual Background Extractor(ViBE) [1].

In Visual background extractor, 'N' number of background samples are considered and every pixel $P(x, y)$ is delegated the pixel that have a place with frontal area or background. In this way its goal is to remove the forefront from the given picture outline. A standardized distinction between the incentive at the pixel $P(x, y)$ in current framing and relating pixel in each example picture is found. In the event that this distinction is not exactly a limit 'R' and on the off

chance that the are at any rate total number of such matches then the pixel $P(x, y)$ is considered as background pixel, else it is a forefront pixel. In the event that the pixel is background pixel, at that point its worth is refreshed in the comparing pixel in an arbitrary example picture and furthermore in an irregular neighboring pixel in another irregular example. This is rehashed for every one of the pixels in the picture outline. Without fail, a closer view pixel is set apart as white and background pixel as dark on grouping. Consequently, we will have a parallel picture having removed foreground area. Morphological- operations erosion is connected on the parallel picture got in both the technique to evacuate undesirable paired qualities and expansion is connected to fill the holes between the pixels of the vehicles. So as to get the last closer view picture, the association of resultant picture from GMM and ViBE is considered.

3.2 .Detection of Vehicle

If there should be an occurrence of Gaussian based background extraction, proper number of gaussian appropriation for every pixel is chosen. We use contour- detection to extract-individual vehicles. This is a strategy that evacuates the background to get closer view picture. This gives better flexibility to differing scenes because of light changes.

3.3 Classification

For grouping of vehicles, Support Vector Ma-chine (SVM) is utilized. SVM is first prepared by giving example vehicles and relating class type. This prepared SVM is utilized for order during video processing. The cropped pictures of vehicles are given as contribution to classify. The Histogram of Gradient (HOG) and Local Binary-Picture (LBP) highlights of dim picture of the vehicle is separated. In light of these removed highlights, SVM characterize and restores the sort of vehicle. Order record of every vehicle in each framing is kept up. At the point when a vehicle leaves the frame, choice about the class to which it has a place is finished by considering the greater part of the sort to which vehicle has been characterized from the time it was first recognized.

3.4 Tracking of Vehicles

Following is finished by nonstop location of vehicles in each edge and choosing if the recognized vehicle has recently arrived or officially existing dependent on the situation of its centroid. When a vehicle id is identified, its centroid is-calculated and compared to that of the vehicles in the list. If the distance between the centroid's is less than a threshold-value then it can be considered as the same vehicle that was detected in the previous frame. So, the centroid of the corresponding vehicle is up-dated in the list. Along these lines, the centroid of the relating vehicle is refreshed in the rundown. On the off chance that the centroid of recognized vehicle isn't coordinating with any of the vehicles in the rundown then it is considered as another vehicle that has gone into the framing. For each new vehicle, a extraordinary personality is allotted and the equivalent is utilized while following. An end line is predefined for the edge and when the centroid of the vehicle crosses that end line, at that point the vehicle is expelled from the list.

IV. EXPERIMENTAL RESULTS



Fig.3. Sample Frame

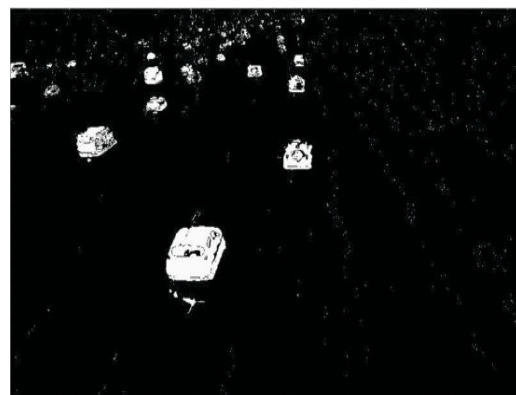


Fig .4.Output of GMM

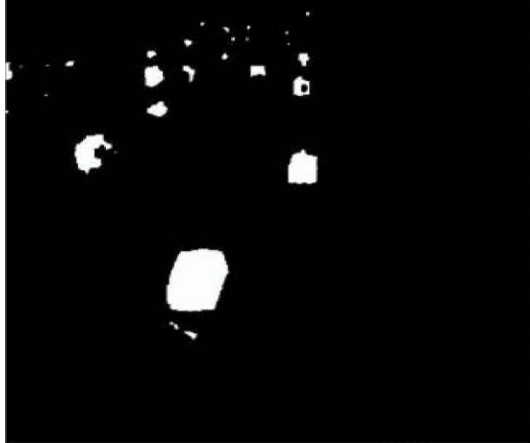


Fig.5. Morphological operations after GMM

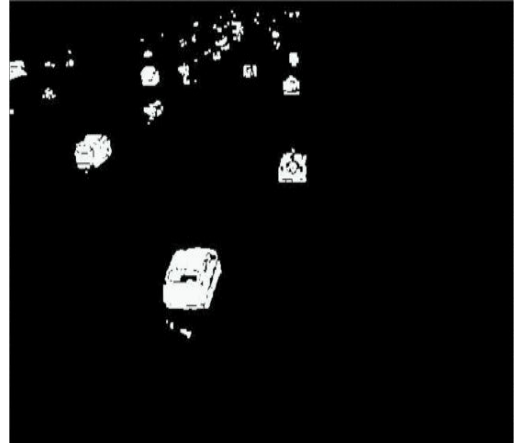


Fig .6. Output of Vibe



Fig .7. Combination of Vibe and GMM



Fig .8. Tracking based on Id



Fig .9. SVM Classification

Fig 3 indicates one of the edges of the traffic observation video. This framing is handled to identify the vehicles in it. Given a framing, 3/4 of the separation toward the movement of vehicles is considered for following and the vehicles past this are overlooked as they show up as modest items. Foreground area picture of the picture edge is acquired by applying GMM, ViBE and the resultant pictures are as appeared in Fig 4 and Fig 6 individually. These foreground area

pictures experience morphological-operations as in Fig 5 and Fig 7. Association of morphologically-operations binary pictures from GMM and ViBE is as appeared in Fig 8 and this picture is used for further identification of vehicles. The shapes present in foreground picture are found and for each shape an ID is selected. In the event that it is a current vehicle in the past frame then a similar ID is held. ID based following is as appeared in Fig 9. Identified vehicles are grouped utilizing SVM in view of HOG and LBP highlights. In this analysis, two unique classes of vehicles, that is Car and Light Motor Vehicle (LMV) are considered. SVM is prepared utilizing dataset of these two classes. Order is performed at each framing and last class of the vehicle is chosen dependent on dominant part of the opportunity to which class it has had a place before leaving the edge.

V. CONCLUSION

A strategy to distinguish and recognize the-vehicles- in rush hour gridlock observation video. Gaussian-Mixture-Model and Visual-Background-Extraction is utilized to get-the enhanced background. One of a kind ID based following is clear-cut and quick contrasted with confounded following-algorithms like Kalman-Filter. SVM is prepared and tried utilizing HOG and LBP highlight to make the order as precise as could reasonably be expected. Along these lines proposed technique is more precise also proficient than the current techniques.

REFERENCES

- [1] Olivier Barnich and Marc Van Droogenbroeck, ViBe: A universal background subtraction algorithm for video sequences, in IEEE Transactions on Image Processing, vol. 20, pp. 1709-1724, 2011.
- [2] Saran K B and Sreelekha G, Traffic Video Surveillance: Vehicle Detection and Classification, in International Conference on Control, Communication and Computing India, 2015.
- [3] Sonu Kumar Sharma ,Radhika Agrawal , Snehil Srivastava ,Dushyant Kumar Singh, "Review of human detection techniques in night vision", International Conference on Wireless Communications, Signal Processing and Networking (WiSPNET),2017,pp. 2216 – 2220
- [4] Chun-Fu Lin , Sheng-Fuu Lin, Chi-Hung Hwang, Yu-Chieh Chen, "Real-time pedestrian detection system with novel thermal features at night", IEEE International Instrumentation and Measurement Technology Conference (I2MTC) Proceedings, 2014,pp.1329 – 1333.
- [5] Kaiqi Huang, Liangsheng, T.Tan and S.Maybank, "A Real Time Object Detecting and Tracking System for Outdoor Night Surveillance," Elsevier Journal of Pattern Recognition, 2008,41, pp. 432-444.
- [6] J. Tang, J.H. Kim and E. Peli,"Image enhancement in the JPEG domain for people with vision impairment," IEEE Trans. Biomed. Eng, 2004, 51(11), pp. 2013-2023.
- [7] Liu, X., Qi, C., "Future-data driven modeling of complex backgrounds using mixture of Gaussians", Neuro computing, 2013, 119, pp. 439-453.
- [8] Shah, M., Deng, J.D., Woodford, B.J. "Video background modeling: recent approaches, issues and our proposed techniques", Mach. Vis. Appl., 2014, 25 (5), pp. 1105-1119.
- [9] Van Droogenbroeck M, Barnich, O, "Background subtraction: experiments and improvements for ViBe", IEEE Computer Society Conf. on Computer Vision Pattern Recognition Workshops, 2012, pp. 32-37.
- [10] NonakaY, Shimada A, Nagahara,"Evaluation report of integrated background modeling based on spatio-temporal features", IEEE Computer Society Conf. on Computer Vision and Pattern Recognition Workshops (CVPRW), 2012, pp. 9-14.M. Young, The Technical Writers Handbook. Mill Valley, CA: University Science, 1989.
- [11] Zezhi Chen, Tim Ellis and Sergio A Velastin, Vehicle Detection, Tracking and Classification in Urban Traffic, in IEEE Conference on Intelligent Transportation Systems, Anchorage, Alaska, USA, 2012.
- [12] Shuguang Li, Hongkai Yu, Jingru Zhang, Kaixin Yang and Ran Bin, Video-based traffic data collection system for multiple vehicle types, in IET Intelligent Transport Systems, 2013.
- [13] Bashirahamad. F. Momin and Tabssum. M. Mujawar, Vehicle detection and Attribute based search of vehicles in video surveillance system, in International Conference on Circuit, Power and Computing Technologies, 2015.
- [14] Zezhi Chen, Nick Pears, Michael Freeman and Jim Austin, A Gaussian mixture model and support vector machine approach to vehicle type and colour classification, in IET Intelligent Transport Systems, 2012.
- [15] Indrabayu, Rizki Yusliana Bakti ,Intan Sari Areni , A. Ais Prayogi " Vehicle Detection and Tracking using Gaussian Mixture Model and Kalman Filter", International Conference on Computational Intelligence and Cybernetics ,2016,Pp 115 – 119.



INTERNATIONAL
STANDARD
SERIAL
NUMBER
INDIA



INTERNATIONAL JOURNAL OF INNOVATIVE RESEARCH

IN SCIENCE | ENGINEERING | TECHNOLOGY

 9940 572 462  6381 907 438  ijirset@gmail.com



www.ijirset.com

Scan to save the contact details