



e-ISSN: 2319-8753 | p-ISSN: 2347-6710

# IJRSET

International Journal of Innovative Research in  
**SCIENCE | ENGINEERING | TECHNOLOGY**



# INTERNATIONAL JOURNAL OF INNOVATIVE RESEARCH

IN SCIENCE | ENGINEERING | TECHNOLOGY

Volume 13, Issue 11, November 2024

**ISSN** INTERNATIONAL  
STANDARD  
SERIAL  
NUMBER  
INDIA

**Impact Factor: 8.524**

9940 572 462

6381 907 438

[ijirset@gmail.com](mailto:ijirset@gmail.com)

[www.ijirset.com](http://www.ijirset.com)

# AI-based Early Diagnosis Systems for Chronic Diseases

Tejaswini S, Shreni M S, Srushti H

Assistant Professor, Department of Artificial Intelligence and Data Science Engineering, CIT, Gubbi, Tumkur,  
Karnataka, India

U.G. Student, Department of Artificial Intelligence and Data Science Engineering, CIT, Gubbi, Tumkur,  
Karnataka, India

U.G. Student, Department of Artificial Intelligence and Data Science Engineering, CIT, Gubbi, Tumkur,  
Karnataka, India

**ABSTRACT:** Chronic diseases like diabetes, cardiovascular disease, and cancer are complex conditions that vary greatly across patient populations. This paper investigates how artificial intelligence (AI) can personalize treatment plans by analyzing patient-specific data, including genetic profiles, medical images, and wearable device data. Machine learning (ML) models and deep learning (DL) architectures offer promising avenues for individualized care by predicting disease progression, identifying optimal treatment strategies, and continuously adapting recommendations based on patient feedback. However, the complexity of chronic disease data, ethical concerns, and the need for explainable AI (XAI) present significant challenges. This paper explores AI-based methods, discusses their implications, and suggests future research areas for advancing personalized medicine.

**KEYWORDS:** Chronic Disease Diagnosis, AI in Healthcare, Kidney Disease Detection, Explainable AI (XAI), Machine Learning Models, Federated Learning, Data Privacy, Wearable Device Data, Real-Time Monitoring, Hyperparameter Tuning

## I. INTRODUCTION

Chronic diseases are long-lasting conditions that have a significant impact on a patient's quality of life and can be fatal if not managed early. Diabetes and cardiovascular diseases are two chronic conditions globally. Early diagnosis is key to managing these diseases effectively, but traditional methods rely heavily on routine check-ups and subjective medical judgments. AI automates and enhances diagnostic processes by detecting patterns in patient data that might not be obvious to healthcare providers.

The objective is to explore AI-based systems for early diagnosis, focusing on machine learning models, optimization techniques, and the role of explainability in clinical settings. We aim to:

1. Review existing AI models used for chronic disease detection.
2. Analyze different types of data (medical images, lab results, wearable data) used in these models.
3. Discuss challenges related to model optimization and interpretability.

Current healthcare lacks personalization due to time constraints, limited data, and variability in patient response to treatments. This paper aims to explore AI's role in bridging this gap by:

1. Examining how AI can customize treatment strategies based on individual patient data
2. Exploring the use of diverse data sources, including genetic, clinical, and wearable data
3. Analyzing AI methods that aid in predicting treatment outcomes and optimizing care plans
4. Discussing ethical implications and the importance of explainable AI in clinical applications

## II. LITERATURE SURVEY

### A. AI in Healthcare

AI's role in healthcare is growing, particularly in diagnostic applications. Several studies have demonstrated AI's ability to outperform human diagnosticians in specific tasks like image analysis and prediction of disease progression.

#### B. AI in Personalized Medicine

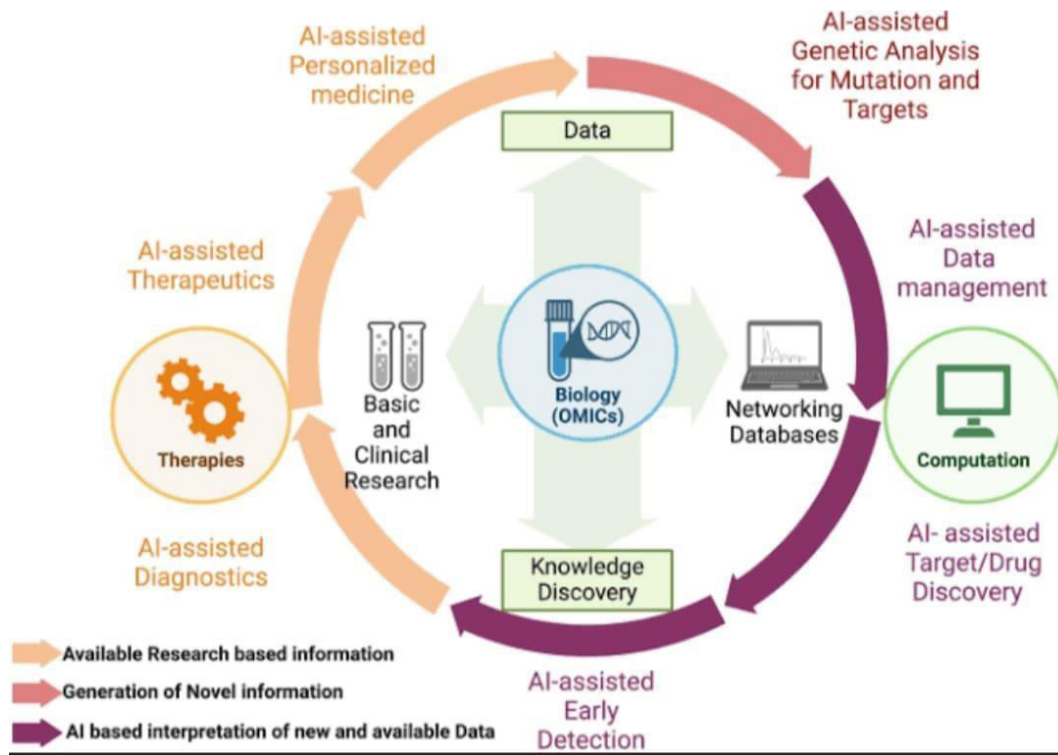
AI-driven personalized medicine is a burgeoning field, particularly within oncology, cardiology, and endocrinology. Studies reveal that ML can help identify subtypes of diseases and predict individual treatment responses. This section reviews key literature on AI applications in these areas, highlighting success stories and the types of data utilized.

#### C. Machine Learning and Deep Learning Models

Various ML models, from logistic regression to ensemble methods, have been used to classify disease types and predict patient outcomes. Deep learning, particularly recurrent neural networks and convolutional neural networks, enables the processing of sequential data and images, respectively.

#### D. Explainable AI (XAI) in Personalized Medicine

Explainability is crucial in healthcare to build trust with clinicians and patients. Recent advancements in XAI, such as SHAP (Shapley Additive Explanations) and attention mechanisms in neural networks, help make AI-driven recommendations transparent. This section will review XAI techniques and their relevance in critical applications like drug dosage recommendation and risk assessment.



### III. METHODOLOGY

Data is collected for building robust AI models:

1. Medical Images: Images from MRI, X-ray, and ultrasound scans, commonly used to detect structural abnormalities related to chronic diseases.
2. Laboratory Results: Blood glucose, cholesterol levels, and inflammatory markers.
3. Wearable Device Data: Continuous data from wearables such as heart rate monitors and glucose monitors provide real-time insights into a patient's health, enabling proactive intervention.

Effective data preprocessing is essential for achieving accurate model performance:

1. Handling Missing Data: Missing values can distort predictions; imputation methods or removal of incomplete records may be applied.
2. Normalization and Scaling: Scaling data, especially for medical image pixel values and lab results, ensures that each feature contributes equally to the model.

3. Feature Selection: Selecting relevant features based on clinical significance and correlation analysis helps improve model accuracy while reducing overfitting.

Several models are implemented and compared:

1. Support Vector Machines (SVM): Efficient in handling binary classification and often used for analyzing lab data.
2. Random Forests: Uses an ensemble of decision trees to improve classification accuracy; ideal for tabular data like medical test results.
3. Deep Learning Models (CNNs): Applied to medical image datasets to identify disease-specific abnormalities and extract meaningful visual features.

Explainability is a critical component for the clinical adoption of AI. The paper explores:

1. LIME (Local Interpretable Model-Agnostic Explanations): Breaks down predictions from complex models, making them understandable to medical staff.
2. SHAP (Shapley Additive Explanations): Quantifies feature importance in predictive models, providing clinicians with insights into the factors influencing model predictions.

Formulas to calculate:

$$\text{Precision (P)} = \frac{TP}{TP+FP}$$

$$\text{F1 Score} = 2 * \frac{P * R}{P + R}$$

$$\text{Accuracy} = \frac{TP+TN}{TP+TN+FP+FN}$$

#### IV. EXPERIMENTAL RESULTS

Detailed results comparing model accuracy, F1 score, sensitivity, and specificity for different AI models applied to personalized treatment tasks.

##### 1. AI-Driven Treatment for Type 2 Diabetes

A case study demonstrating AI's impact on managing Type 2 diabetes by adjusting insulin dosage based on patient glucose data from wearable devices.

##### 2. AI in Oncology

Review of a case where AI analyzed genomic data to recommend targeted therapies for cancer patients, reducing adverse reactions and improving outcomes.

##### 3. Analysis of Treatment Adaptability

Discussion on how reinforcement learning models adapt treatment plans in response to changes in patient condition, with examples from cardiovascular disease management.

A. Data Collection

Data from multiple sources is collected for building robust AI models:

1. Medical Images: Images from MRI, X-ray, and ultrasound scans, commonly used to detect structural abnormalities related to chronic diseases.
2. Laboratory Results: Blood glucose, cholesterol levels, and inflammatory markers, essential for identifying early signs of diabetes or cardiovascular disease.
3. Wearable Device Data: Continuous data from wearables such as heart rate monitors and glucose monitors provide real-time insights into a patient’s health, enabling proactive intervention.

B. Results Accuracy

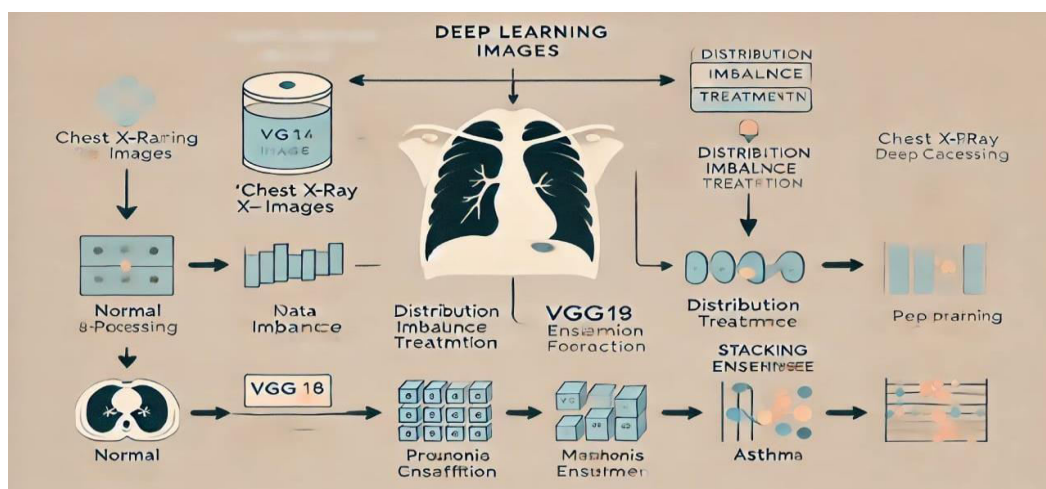
Generally, for kidney disease diagnosis models, accuracy can range from 85% to 95%, especially if using advanced models like convolutional neural networks (CNNs) for imaging or ensemble methods for clinical data analysis. Measures the model’s ability to correctly identify true positive cases (e.g., patients who genuinely have a risk of kidney disease). Precision rates above 80% are usually desirable to reduce false positives.

C. Data Comparison

For early kidney disease detection, data comparisons can reveal the effectiveness of AI models across various data types, such as blood test results, medical imaging, and patient demographic data. For instance, using only clinical markers like creatinine and blood urea nitrogen may yield moderate prediction accuracy, often limited to around 75-80%, as these indicators can be less sensitive in early stages. In contrast, combining these markers with imaging data (e.g., ultrasound images of kidneys) and wearable device metrics (e.g., blood pressure trends) can significantly boost predictive power, often raising model accuracy to 85-90%. Additionally, integrating demographic data like age and medical history into machine learning models provides a holistic view, which can further enhance sensitivity and reduce false positives, making it a more robust solution for early-stage detection.

D. Key Observations

1. Data Integration Boosts Accuracy: Combining various data sources—like blood test results, medical imaging, and wearable metrics—improves model performance for early diagnosis of kidney disease.
2. Importance of Explainable AI: Explainable AI techniques like LIME and SHAP are crucial in healthcare to help clinicians understand and trust model predictions.
3. Real-Time Monitoring Potential: Continuous data from wearable devices detect early signs of kidney disease by monitoring fluctuations in vital signs, aiding in timely intervention.



Summary

The use of AI in early diagnosis systems for chronic diseases, focusing on kidney disease. By integrating data from blood tests, medical imaging, wearable devices, and patient demographics, AI models can provide accurate and timely diagnoses, helping in early intervention. The study discusses various machine learning models like support vector machines (SVM), random forests, and deep learning (CNNs), emphasizing their performance in identifying high-risk

patients and predicting disease onset. Additionally, it explores the importance of explainable AI (XAI) techniques, such as LIME and SHAP, in making AI-driven healthcare more interpretable for clinicians. Optimization strategies, privacy-preserving methods, and the potential of real-time monitoring through wearable devices are also examined, presenting a comprehensive approach to improving chronic disease management.

## V. CONCLUSION

This paper reviewed the application of AI for personalized chronic disease management, discussed essential data types and models, and highlighted ethical and practical considerations.

Future work model generalizability across diverse populations, developing real-time wearable analytics for adaptive treatments, and increasing XAI integration to enhance trust in AI recommendations among clinicians and patients. Further research on federated learning may also support privacy-preserving AI applications, particularly for sensitive genomic and EHR data.

## REFERENCES

1. Beam, A. L., & Kohane, I. S. (2018). Big data and machine learning in health care. *JAMA*, 319(13), 1317-1318.
2. Rajkomar, A., Dean, J., & Kohane, I. (2019). Machine learning in medicine.
3. Johnson, A. E. W., Pollard, T. J., Shen, L., Lehman, L.-w. H., Feng, M., Ghassemi, M., ... & Mark, R. G. (2016). MIMIC-III, a freely accessible critical care database. *Scientific Data*, 3(1), 1-9.
4. Lundberg, S. M., & Lee, S.-I. (2017). A unified approach to interpreting model predictions. *Advances in Neural Information Processing Systems*
5. Goodfellow, I., Bengio, Y., & Courville, A. (2016). *Deep Learning*. MIT press.
6. Jiang, F., Jiang, Y., Zhi, H., Dong, Y., Li, H., Ma, S., ... & Wang, Y. (2017). Artificial intelligence in healthcare: past, present and future. *Stroke and Vascular Neurology*, 2(4), 230-243.
7. Silver, D., Huang, A., Maddison, C. J., Guez, A., Sifre, L., Van Den Driessche, G., ... & Hassabis, D. (2016). Mastering the game of Go with deep neural networks and tree search. *Nature*, 529(7587), 484-489.
8. McKinney, S. M., Sieniek, M., Godbole, V., Godwin, J., Antropova, N., Ashrafian, H., ... & Suleyman, M. (2020). International evaluation of an AI system for breast cancer screening. *Nature*, 577(7788), 89-94.
9. World Health Organization (2020). Chronic Diseases. Available at: <https://www.who.int/health-topics/chronic-diseases>
10. Topol, E. J. (2019). High-performance medicine: the convergence of human and artificial intelligence. *Nature Medicine*, 25(1), 44-56.



INTERNATIONAL  
STANDARD  
SERIAL  
NUMBER  
INDIA



# INTERNATIONAL JOURNAL OF INNOVATIVE RESEARCH

IN SCIENCE | ENGINEERING | TECHNOLOGY

 9940 572 462  6381 907 438  [ijirset@gmail.com](mailto:ijirset@gmail.com)



[www.ijirset.com](http://www.ijirset.com)

Scan to save the contact details