



e-ISSN: 2319-8753 | p-ISSN: 2347-6710

# IJRSET

International Journal of Innovative Research in  
**SCIENCE | ENGINEERING | TECHNOLOGY**



# INTERNATIONAL JOURNAL OF INNOVATIVE RESEARCH

IN SCIENCE | ENGINEERING | TECHNOLOGY

Volume 13, Issue 11, November 2024

**ISSN** INTERNATIONAL  
STANDARD  
SERIAL  
NUMBER  
INDIA

**Impact Factor: 8.524**

9940 572 462

6381 907 438

[ijirset@gmail.com](mailto:ijirset@gmail.com)

[www.ijirset.com](http://www.ijirset.com)

# Enhancing Battery Health Prediction for Electric Vehicles through Machine Learning, Deep Learning, and Digital Twin Technology

Prof. Gunjan V. Ukalkar<sup>1</sup>, Shama Kadam<sup>2</sup>, Aditi Marne<sup>3</sup>, Abhay Patil<sup>4</sup>, Abhishek Mhaske<sup>5</sup>

Project Guide, Department of Computer, PVPIT, Bavdhan, Pune, India<sup>1</sup>

UG Student, Department of Computer, PVPIT, Bavdhan, Pune, India<sup>2</sup>

UG Student, Department of Computer, PVPIT, Bavdhan, Pune, India<sup>3</sup>

UG Student, Department of Computer, PVPIT, Bavdhan, Pune, India<sup>4</sup>

UG Student, Department of Computer, PVPIT, Bavdhan, Pune, India<sup>5</sup>

**ABSTRACT:** The adoption and development of electric vehicles are accelerating rapidly due to advancements in technology and features. Monitoring and maintaining the battery health of an electric vehicle is crucial, as the battery is an essential component affecting the vehicle's performance and lifespan. This project aims to predict battery life and health—specifically, the State of Health (SOH) and Remaining Useful Life (RUL)—and to recommend techniques for enhancing battery health and extending lifespan. To achieve accurate predictions, we employ a range of machine learning and deep learning models, including XGBoost and LSTM networks. Additionally, we incorporate digital twin technology to improve the accuracy of SOH and RUL predictions, leveraging real-time data and advanced simulations.

**KEYWORDS:** State of Health(SOH), Remaining Useful Life(RUL), XGBoost, LSTM, Digital Twin Technology

## I. INTRODUCTION

The widespread use of gasoline-powered vehicles has led to significant environmental harm, primarily due to the emission of harmful gases such as carbon dioxide, nitrogen oxides, and particulate matter. These emissions contribute to air pollution, global warming, and the depletion of the ozone layer, posing severe risks to public health and the environment. Moreover, petroleum, the primary fuel for gasoline vehicles, is a finite and non-renewable resource, further exacerbating concerns over its sustainability and long-term availability. EVs offer a more sustainable alternative, as they rely on electricity, which can be generated from renewable sources such as solar, wind, and hydropower. This shift to electric mobility significantly reduces the environmental impact, decreasing greenhouse gas emissions and promoting cleaner air. As such, electric vehicles represent a vital step toward achieving a more sustainable and environmentally friendly transportation system.

Electric vehicles represent a new generation of sustainable transportation, offering cleaner, more efficient alternatives to traditional fuel-powered vehicles. With advancements in battery technology, electric vehicles are becoming increasingly popular, promising reduced emissions and a more environmentally friendly future. Lithium-ion (Li-ion) batteries are well-suited for electric vehicles (EVs) due to their unique composition and advantageous properties. Li-ion batteries offer high energy density, meaning they can store a large amount of energy relative to their weight and size, which is essential for EVs that require compact yet powerful energy sources to achieve reasonable driving ranges.

As electric vehicles (EVs) become more common, ensuring the health and safety of their batteries is becoming increasingly important. The battery is a vital part of the vehicle, and its performance directly impacts the overall experience. However, there have been reports of EVs catching fire or even exploding due to issues like overheating or other battery malfunctions. These incidents serve as a reminder of how crucial it is to have systems in place that monitor and maintain battery health. To prevent such problems, it's essential to develop technology that can track battery performance in real-time and issue warnings before anything goes wrong. By monitoring key factors like temperature, charge cycles, and overall battery health, we can catch potential issues early, ensuring the battery lasts longer, operates safely, and ultimately reduces the risks associated with EV ownership. This proactive approach not

only helps avoid dangerous situations but also builds trust in electric vehicles, helping to pave the way for safer, more reliable transportation in the future.

In this project, we aim to develop an advanced system designed to monitor the health and lifespan of electric vehicle batteries, offering valuable insights and recommendations for maintaining optimal battery performance. The system will not only track real-time battery metrics but also analyze how different usage patterns and external factors impact the battery's health over time. For example, the way the user drives the vehicle, the frequency of charging, and the environmental temperature all influence the rate at which the battery degrades. By monitoring these variables, the system will provide tailored guidance on how to improve battery care and extend its longevity.

To predict critical metrics such as the State of Health (SOH) and Remaining Useful Life (RUL) of the battery, we will implement machine learning (ML) model which is XGBoost and deep learning (DL) model which is Long Short-Term Memory (LSTM) networks. These models are well-suited for capturing complex patterns in time-series data, allowing for accurate predictions based on historical performance and usage data. Additionally, we will leverage digital twin technology, which creates a virtual replica of the battery system, to simulate and predict the battery's behavior under various conditions. By combining these advanced techniques, our system will provide precise and actionable insights, helping users manage battery health proactively and avoid potential issues before they arise. This approach not only enhances the performance and lifespan of the battery but also contributes to the overall safety and sustainability of electric vehicles.

## II. LITERATURE SURVEY

The papers reflect a field focused on improving battery life predictions through data-driven models and digital tools, though practical limitations like computational load, data consistency, and generalizability remain significant challenges.

- 1) Paper Name - Optimizing Battery RUL Prediction of Lithium-Ion Batteries Based on Harris Hawk Optimization Approach Using Random Forest and LightGBM

Author name - S. Jafari and Y.-C. Byun

This study presents a method combining machine learning models (Random Forest and LightGBM) with an optimization algorithm (Harris Hawk) to predict how long lithium-ion batteries will last. Their method achieves high accuracy, suggesting it's effective for estimating battery lifespan. However, the approach is computationally heavy and might not perform as well with different datasets or battery types.

- 2) Paper Name - Prediction of the Battery State Using the Digital Twin Framework Based on the Battery Management System

Author Name - S. Jafari and Y.-C. Byun

This paper introduces a "Digital Twin" model that uses real-time data and machine learning to estimate battery health and charge levels. This approach aims to keep batteries running smoothly over their lifespan. However, it relies heavily on constant, high-quality data from sensors, which can be challenging to maintain, and requires significant computational resources.

- 3) Paper Name - Remaining Useful Life Predictor for EV Batteries Using Machine Learning  
Author name - D. Swain et al.

Here, the authors focus on predicting battery lifespan in electric vehicles using machine learning (Random Forest and Support Vector Machine), optimizing model features for accuracy. Their model shows promising results when tested with NASA's dataset. But since it was trained on specific data, its accuracy might drop when applied to different, real-world conditions.

- 4) Paper Name - A Comprehensive Review of Lithium-Ion Batteries Modelling and State of Health and Remaining Useful Lifetime Prediction

Author Name - M. Elmahallawy et al.

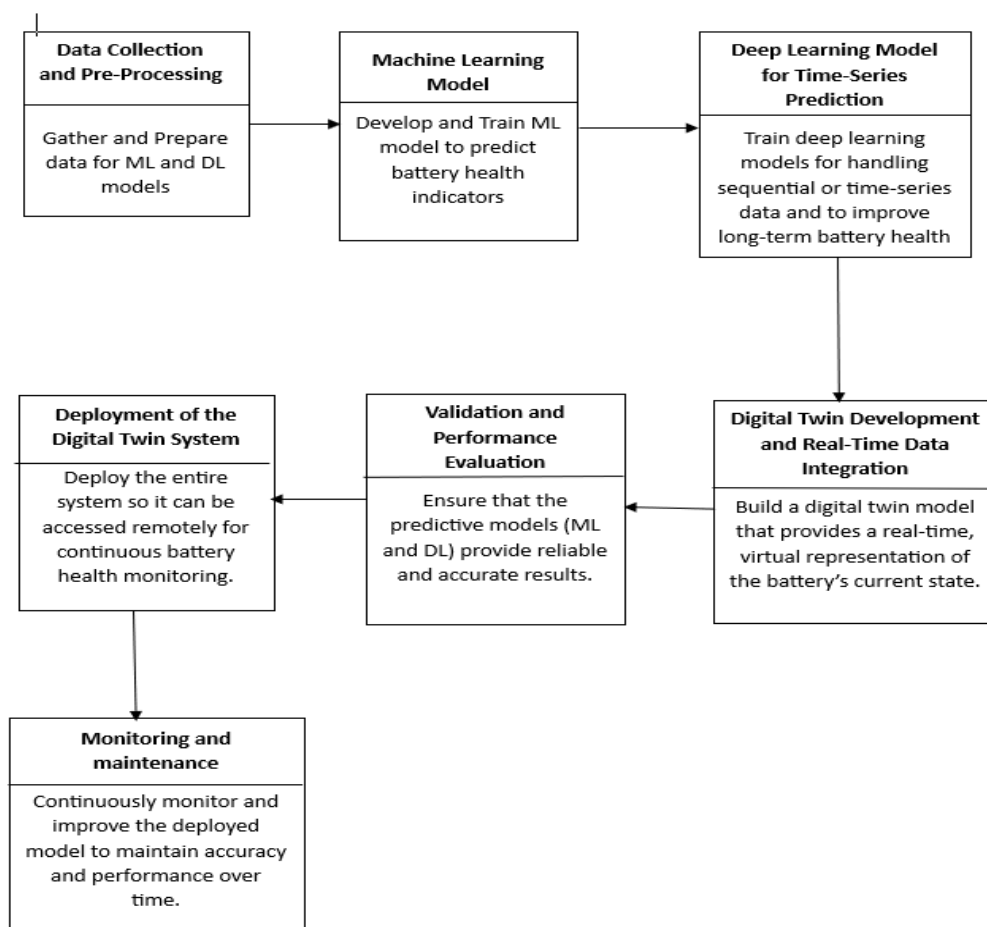
This review provides an overview of the main methods to model battery health and predict lifespan, summarizing advantages and drawbacks of model-based and data-driven approaches. It highlights the need for more accurate models but doesn't provide new experimental findings. As a review, it serves more as a reference than a direct solution for practitioners.

5) Paper Name - Comprehensive Review of Machine Learning, Deep Learning, and Digital Twin Data-Driven Approaches in Battery Health Prediction of Electric Vehicles

Author Name - A. P. Renold and N. S. Kathayat

This survey explores how data-driven and digital twin technologies are being used to estimate battery health in electric vehicles. It covers recent developments and future challenges, especially around machine learning applications. The authors note challenges like data quality and security, which can limit the practical use of these methods, particularly in complex real-world environments.

### III. PROPOSED METHODOLOGY



#### A. Data Collection and Preprocessing

To predict battery health effectively, we'll start by gathering data from EVs' Battery Management Systems (BMS), focusing on essential parameters like temperature, voltage, current, charge/discharge cycles, and state of charge. Once collected, we'll clean and format the data using tools like Pandas and NumPy to remove any inconsistencies or fill in missing values. We might also apply time-series feature extraction with libraries like tsfresh and sktime to capture key trends over time. This well-prepared data will help our ML and DL models make more accurate predictions about battery health.

#### B. Machine Learning Model for Battery Health Prediction

Next, we'll build a machine learning model to predict battery health by using algorithms like Random Forest and XGBoost with libraries such as Scikit-learn and XGBoost. These models will help us predict important battery health metrics like State of Health (SoH) or Remaining Useful Life (RUL) by learning from historical data. During this

process, we'll focus on feature engineering to enhance model performance and use tools like SHAP to identify which factors (e.g., temperature, charge cycles) most influence predictions. To make sure our model is accurate and reliable, we'll split the data into training and testing sets or use cross-validation to prevent overfitting. This step forms the core of our battery health prediction system.

### C. Deep Learning for Time-Series Prediction

To improve battery health predictions over time, we'll use deep learning with LSTM (Long Short-Term Memory) networks, implemented in TensorFlow or PyTorch. LSTM networks are perfect for handling time-series data, like battery usage patterns, as they can capture long-term dependencies in the data. We'll train the LSTM model on historical battery data to predict future degradation and battery life more accurately, especially over extended periods. TensorBoard will help us track training progress and visualize the model's performance. This approach will be especially useful for forecasting the slow, gradual changes in battery health that occur over time.

### D. Digital Twin Development and Real-Time Data Integration

We'll build a digital twin of the battery that mirrors its real-time performance using data streamed from the Battery Management System (BMS) through IoT protocols like MQTT or cloud platforms such as Azure Digital Twins or AWS IoT. This digital twin will continuously update to reflect the current battery usage and health, allowing us to monitor its performance in real-time. By synchronizing the digital twin with the actual battery, we can predict its State of Health (SoH) and Remaining Useful Life (RUL) as conditions change. Essentially, the digital twin serves as a dynamic model that provides real-time insights into the battery's status, enabling us to take proactive steps for maintenance.

### E. Validation and Performance Evaluation

To ensure our models are accurate, we'll validate the predictions made by both the ML and DL models using both historical and real-time data. We'll assess prediction accuracy by calculating metrics like Mean Absolute Error (MAE), Root Mean Square Error (RMSE), and R<sup>2</sup> Score. The digital twin will also be regularly validated against real battery data to make sure it accurately reflects the battery's performance. If we notice significant discrepancies between predicted and actual results, we'll fine-tune the models to improve accuracy. This ongoing evaluation ensures that the models stay reliable and effective in real-world scenarios.

### F. Deployment of the Digital Twin System

To make the system accessible, we'll create a user-friendly interface or an API using frameworks like FastAPI or Flask, allowing users to view real-time battery health data from the digital twin. The digital twin and its ML/DL models will be deployed on a cloud platform like Azure IoT or AWS IoT for seamless data streaming, storage, and remote access. To simplify deployment and scaling, we'll use Docker to containerize the application, enabling it to manage multiple vehicle batteries efficiently. This setup will allow fleet managers, maintenance teams, and vehicle owners to monitor and access the battery health insights from anywhere, making the system both practical and scalable.

### G. Monitoring and Maintenance

To keep the system accurate and up-to-date, we'll use tools like ML flow to monitor the performance of our models, track important metrics, and manage different versions of the ML and DL models. As new data becomes available, we'll regularly update the models to enhance prediction accuracy. SHAP will help us track changes in feature importance, showing how factors like temperature and charge cycles influence battery health predictions over time. This continuous monitoring and updating process ensures the digital twin system remains reliable, enabling users to make informed, proactive maintenance decisions.

## IV. RESULTS AND DISCUSSION

### XGBoost

XGBoost—this model takes a smart approach to learning. While Random Forest builds multiple decision trees independently and then averages their results, XGBoost builds its trees in a way where each new tree focuses on the previous trees' mistakes. This iterative improvement makes it possible for XGBoost to capture complex interactions and deeper relationships within the data. For example, if there are subtle but meaningful changes in battery patterns that affect health or performance, XGBoost is very good at noticing and learning these details. What's more, XGBoost has built-in techniques that help it generalize well even on smaller datasets, which can prevent it from just memorizing the

data without truly understanding the underlying patterns. With its adaptability and high-speed performance, XGBoost handles different types of data well, including daily and weekly summaries, making it a flexible and reliable choice.

### LSTM

LSTM (Long Short-Term Memory) networks bring something completely different to the table: the ability to learn from past values over time, making it perfect for any data where history really matters. LSTMs are designed to remember what happened in previous time steps, and this is crucial if past battery usage patterns affect future performance, as they often do. For instance, LSTM can pick up on trends, like if a battery's state of health is declining gradually over weeks. Random Forest and SVR, however, treat each instance in isolation, which means they don't capture the influence of past data on future values. This memory aspect makes LSTM especially effective when predicting on data that follows a timeline, like weekly updates on battery performance, as it can see the bigger picture in a way that static models just can't. With more data over time, LSTM only gets better at spotting trends, giving it an edge when patterns evolve or change gradually.

Together, XGBoost and LSTM offer a deeper understanding of battery behavior than Random Forest and SVR by focusing on unique strengths. While Random Forest is quick and effective for simpler tasks, XGBoost's continuous improvement approach and LSTM's focus on sequential patterns make them more insightful choices for complex or time-sensitive battery data. XGBoost excels with intricate, structured data, finding hidden connections within the data points, while LSTM truly shines with any data that involves a timeline, revealing how past patterns impact the future. Both XGBoost and LSTM thus provide powerful, nuanced insights for battery performance, helping you make highly accurate, informed predictions.

### Digital Twin Technology

Adding a Digital Twin to a battery performance project can significantly enhance prediction accuracy and overall monitoring. A Digital Twin is a virtual model of the physical battery, continuously updated with real-time data, creating a dynamic, interactive replica that evolves alongside the actual battery.

With a Digital Twin, real-time monitoring provides up-to-date insights into the battery's health, improving predictive models like LSTM and XGBoost. This allows for early issue detection and better maintenance planning. The Digital Twin also generates synthetic data through simulations, enriching training sets and helping models capture a wider range of behaviors.

Additionally, it supports model diagnostics by testing predictions against real-time virtual behavior. By incorporating environmental factors like temperature and load, it provides a more contextual understanding of the battery's condition, leading to more accurate predictions. Finally, it can simulate what-if scenarios, predicting how different conditions affect battery life and improving future performance forecasts.

In short, a Digital Twin improves prediction accuracy, optimizes maintenance schedules, enhances model training, and extends battery life by offering a more holistic view of battery health.

## V. CONCLUSION

This project aims to accurately and efficiently predict battery health and lifespan in electric vehicles (EVs) by leveraging a combination of advanced machine learning models—specifically, XGBoost and LSTM—and the innovative application of Digital Twin technology.

The integration of these tools brings a unique advantage: XGBoost offers robust, accurate predictions on structured battery data, while LSTM models capture complex, time-dependent behaviors crucial for tracking gradual changes in battery health. Adding a Digital Twin enriches this approach further by creating a virtual representation of the battery that evolves alongside the real one, providing continuous, real-time data and simulating a wide range of usage scenarios. This combined framework enables a deeper, more precise understanding of battery performance, helping to identify potential issues early, forecast lifespan more reliably, and ultimately optimize maintenance schedules.

Effective battery health monitoring is essential for EVs, where safe, long-lasting battery performance directly impacts vehicle reliability and user satisfaction. By providing more accurate predictions and actionable insights, this approach

represents a step forward in intelligent battery management for EVs, supporting the broader goal of sustainable, efficient electric mobility.

#### REFERENCES

1. Jafari, S. and Byun, Y.C., 2023. Optimizing battery RUL prediction of lithium-ion batteries based on Harris hawk optimization approach using random forest and LightGBM. *IEEE Access*.
2. Jafari, S. and Byun, Y.C., 2022. Prediction of the battery state using the digital twin framework based on the battery management system. *IEEE Access*, 10, pp.124685-124696.
3. Swain, D., Kumar, M., Nour, A., Patel, K., Bhatt, A., Acharya, B. and Bostani, A., 2024. Remaining Useful Life Predictor for EV Batteries Using Machine Learning. *IEEE Access*.
4. Renold, A.P. and Kathayat, N.S., 2024. Comprehensive Review of Machine Learning, Deep Learning, and Digital Twin Data-Driven Approaches in Battery Health Prediction of Electric Vehicles. *IEEE Access*, 12, pp.43984-43999.
5. Kim, E., Kim, M., Kim, J., Kim, J., Park, J.H., Kim, K.T., Park, J.H., Kim, T. and Min, K., 2023. Data-driven methods for predicting the state of health, state of charge, and remaining useful life of li-ion batteries: A comprehensive review. *International Journal of Precision Engineering and Manufacturing*, 24(7), pp.1281-1304.
6. Zhu, C., Gao, M., He, Z., Wu, H., Sun, C., Zhang, Z. and Bao, Z., 2023. State of health prediction for li-ion batteries with end-to-end deep learning. *Journal of Energy Storage*, 65, p.107218.



INTERNATIONAL  
STANDARD  
SERIAL  
NUMBER  
INDIA



# INTERNATIONAL JOURNAL OF INNOVATIVE RESEARCH

IN SCIENCE | ENGINEERING | TECHNOLOGY

 9940 572 462  6381 907 438  [ijirset@gmail.com](mailto:ijirset@gmail.com)



[www.ijirset.com](http://www.ijirset.com)

Scan to save the contact details