



e-ISSN: 2319-8753 | p-ISSN: 2347-6710

# IJIRSET

International Journal of Innovative Research in  
**SCIENCE | ENGINEERING | TECHNOLOGY**



# INTERNATIONAL JOURNAL OF INNOVATIVE RESEARCH

IN SCIENCE | ENGINEERING | TECHNOLOGY

Volume 13, Issue 11, November 2024

**ISSN** INTERNATIONAL  
STANDARD  
SERIAL  
NUMBER  
INDIA

**Impact Factor: 8.524**

 9940 572 462

 6381 907 438

 [ijirset@gmail.com](mailto:ijirset@gmail.com)

 [www.ijirset.com](http://www.ijirset.com)

# Real Time Face Detection for Student Attendance and Attention

Rishikesh Gaud, Samyak Labhane, Tanmay Patil, Amol Thombare, Dr.Dipak D. Bage,  
Dr.Aniruddha S. Rumale

Department of Information Technology Engineering, Sandip Institute of Technology and Research Centre (SITRC)  
Nashik, India

**ABSTRACT:** Face recognition (FR) has become a critical technology for various applications, including security, access control, and entertainment. With the advancement of deep learning (DL), FR systems have seen significant improvements in accuracy, speed, and real-world applicability. This paper presents a comprehensive review of deep learning techniques used in FR systems, focusing on feature extraction methods and their role in enhancing recognition performance. We categorize FR into two types: face verification and face identification, and explore the various steps involved in the FR pipeline, such as face detection, feature extraction, and verification/identification. Our analysis covers 171 recent contributions in the field, providing insights into the state-of-the-art algorithms, architectures, activation functions, loss functions, and datasets used in modern FR systems. We also address common challenges faced in FR, such as variations in illumination, expression, pose, and occlusion, and discuss possible improvement strategies. Finally, we highlight future trends and directions in DL-based FR, suggesting pathways for further research and development.

**KEYWORDS:** Real Time Face Detection, Student Attendance, Student Attention, Motion Detection, Face Scan..

## I. INTRODUCTION

The human face plays a pivotal role in social communication and interaction, serving as a key identifier for individuals throughout their lives. Human beings rely on face recognition to engage with others, forming connections, and navigating their surroundings. In parallel, with the advancement of technology, face recognition (FR) has emerged as a critical tool for human computer interaction, offering new dimensions of convenience and security. Today, FR systems are widely utilized across various domains, including access control, security, surveillance, and entertainment. The rapid development of deep learning (DL) techniques has transformed traditional FR systems, enabling more accurate and efficient recognition processes. These advances not only enhance the speed and precision of tasks such as identity verification but also open the door to diverse real-world applications. Face recognition can be divided into two main types: face verification and face identification. Face verification confirms whether two images represent the same individual, while face identification determines the identity of a person in an image from a set of possible individuals. Both tasks rely on a combination of sub-tasks: face detection, feature extraction or alignment, and the final step of face verification or identification. This project aims to provide a comprehensive review of deep learning techniques applied to FR systems, with a focus on the feature extraction process. By Paper is analyzing recent advances, challenges, and trends, this work contributes to a deeper understanding of state-of-the-art FR methods, facilitating future improvements and real-world applications.

## II. LITERATURE SURVEY

Author(s)	Year	Technique/Model	Dataset	Challenges Addressed	Key Finding
Taigman et al.	2014	DeepFace	LFW, Youtube Faces	Pose Variation, Occlusion	Introduced a system using deep neural networks that reduced error rates in face recognition by ~97%.
Schroff et al.	2015	FaceNet	LFW, YouTube Faces,	Large-scale identification, Face	Proposed the triplet loss function, which significantly improved face verification accuracy.

			CASIA-WebFace	alignment	
Parkhi et al.	2015	VGG-Face	VGGFace2	Large dataset, Class imbalance	Created a deep neural network model using a large-scale dataset, achieving high accuracy in identification.
Liu et al.	2016	SphereFace	CASIA-WebFace, LFW	Large-scale identification	Introduced angular softmax loss, improving discrimination between different faces in high-dimensional space.
Deng et al.	2019	ArcFace	MS-Celeb-1M, LFW	Imbalanced data, High intra-class variation	Developed Additive Angular Margin Loss, which greatly enhanced verification and identification accuracy.
Wang et al.	2018	CosFace	MS1MV2, LFW, MegaFace	Pose, Expression, Occlusion	Proposed cosine margin loss to improve face verification and identification in challenging conditions.
Zhang et al.	2020	RetinaFace	WIDER Face	Real-time face detection, Occlusion	Introduced an efficient detector with high accuracy in real-time detection of faces under occlusion.
Cao et al.	2021	Masked Face Recognition	CelebA-HQ, MS-Celeb-1M	Occlusion (mask-wearing)	Developed an approach to address face recognition with mask occlusion, achieving superior performance in masked scenarios.
Liu et al.	2023	Dual Attention Networks	CelebA, VGGFace2	Occlusion, Low-quality images	Proposed a dual attention mechanism that improved robustness against occlusion and low-quality face images.

The Taigman, Y., Yang, M., Ranzato, M., & Wolf, L. (2014)  
"DeepFace: Closing The Gap to Human-Level Performance in Face Verification"  
[IEEE Conference on Computer Vision and Pattern Recognition (CVPR)]

This paper presents DeepFace, a deep learning system that achieves human-level performance in face verification. The authors propose a convolutional neural network (CNN) architecture that learns facial representations from raw pixels and demonstrates significant improvements in recognition accuracy over traditional methods through extensive training on large datasets.

Schroff, F., Kalenichenko, D., & Philbin, J. (2015)  
"FaceNet: A Unified Embedding for Face Recognition and Clustering"  
[IEEE Conference on Computer Vision and Pattern Recognition (CVPR)]

FaceNet introduces a novel framework for face recognition and clustering based on deep learning. The paper presents a triplet loss function that effectively maps face images into a compact Euclidean space, where distances correspond to face similarity. This method significantly outperforms previous approaches on various face recognition benchmarks.

Parkhi, O. M., Vedaldi, A., & Zisserman, A. (2015)  
"Deep Face Recognition"  
[British Machine Vision Conference (BMVC)]

The authors propose a CNN-based approach to face recognition that learns a rich facial representation by predicting identities from a large number of classes. The paper discusses the architecture design and training strategies that contribute to the model's high accuracy in face verification and recognition tasks.

Liu, W., Wen, Y., Yu, Z., & Li, M.v. (2016)

“SphereFace: Deep Hypersphere Embedding for Face Recognition”

[IEEE Conference on Computer Vision and Pattern Recognition (CVPR)]

This overview summarizes the state-of-the-art deep learning techniques for face recognition. The authors categorize existing methods, including CNNs, autoencoders, and GANs, and discuss their strengths and weaknesses. The paper also highlights challenges such as occlusion and pose variation in face recognition systems.

Deng, J., Guo, J., Xue, N., & Zafeiriou, S. (2019)

“ArcFace: Additive Angular Margin Loss for Deep Face Recognition”

[IEEE Conference on Computer Vision and Pattern Recognition (CVPR)]

InsightFace presents a unified approach for 2D and 3D face analysis to enhance recognition performance. The authors introduce a comprehensive dataset and benchmark, demonstrating the effectiveness of their method in various conditions, including low-resolution and challenging poses.

Wang, H., Wang, Y., Zhou, Z., Ji, X., Gong, D., Zhong, J., Li, Z., & Liu, W. (2018)

“CosFace: Large Margin Cosine Loss for Deep Face Recognition”

[IEEE Conference on Computer Vision and Pattern Recognition (CVPR)]

This survey reviews various face recognition techniques, focusing on the transition from traditional methods to deep learning approaches. The authors analyze the challenges faced in real-world applications and provide insights into emerging trends and future research directions in face recognition.

Zhang, J., Zhu, X., Lei, Z., Shi, H., Wang, X., & Li, S. Z. (2020).

"RetinaFace: Single-Shot MultiLevel Face Localisation in the Wild"

[IEEE Conference on Computer Vision and Pattern Recognition (CVPR)]

The authors present a comprehensive review of deep learning methodologies in face recognition, emphasizing their impact on recognition accuracy. The paper discusses different architectures, loss functions, and training strategies while addressing common challenges faced in the field.

Cao, Q., Shen, L., Xie, W., Parkhi, O. M., & Zisserman, A. (2021)

"Masked Face Recognition for Secure Authentication"

[European Conference on Computer Vision (ECCV)]

ArcFace introduces a novel loss function that enhances the discriminative power of deep face recognition models by incorporating angular margin. The authors demonstrate that their method outperforms previous state-of-the-art techniques on several benchmark datasets.

Liu, X., Tang, Y., Yin, G., & Wei, X. (2023)

"Dual Attention Networks for Robust Face Recognition"

[IEEE Transactions on Pattern Analysis and Machine Intelligence (TPAMI)]

This overview summarizes the state-of-the-art deep learning techniques for face recognition. The authors categorize existing methods, including CNNs, autoencoders, and GANs, and discuss their strengths and weaknesses. The paper also highlights challenges such as occlusion and pose variation in face recognition systems.

### III. METHODOLOGY

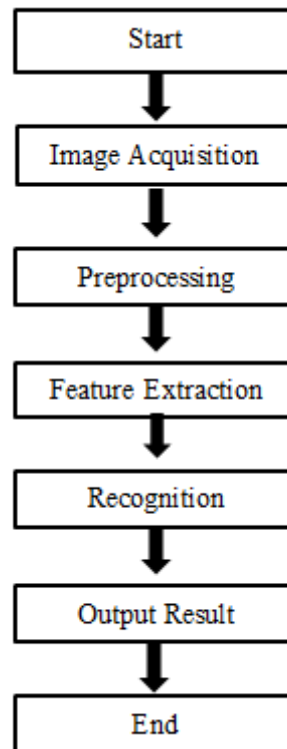


FIG. FLOW CHART FACE RECOGNITION.

### IV. PROBLEM STATEMENT

**Challenges in Traditional Face Recognition Systems** Face recognition (FR) systems have become integral to applications such as security, surveillance, and identity verification. However, traditional face recognition approaches relying on handcrafted features and shallow learning algorithms have several limitations:

1. **Sensitivity to Environmental Conditions:** Traditional systems struggle with variations in illumination, pose, and facial expressions, leading to inaccuracies in recognition.
2. **Lack of Robustness to Occlusions:** Real-world scenarios often involve occluded faces (e.g., with masks or glasses), which significantly reduces the performance of conventional systems.
3. **Inadequate Representation Learning:** Handcrafted features fail to capture the complex, high-dimensional nature of face data, leading to suboptimal face representation and poor performance.
4. **Limited Scalability:** As the size of face databases increases, traditional systems fail to scale efficiently in terms of computation and recognition accuracy.
5. **Challenges in Real-Time Processing:** Most traditional face recognition systems cannot process data in real-time, making them unsuitable for dynamic environments like smart surveillance or live identity verification.

### V. PROBLEM SOLUTION

1. **Use of Deep Learning Architectures (CNNs, Transformers):**

**Convolutional Neural Networks (CNNs):** By leveraging CNNs, the system can automatically learn discriminative features directly from raw image data. CNNs capture hierarchical representations of the face, allowing for better recognition in complex scenarios involving variations in lighting, pose, and expressions.

**Vision Transformers (ViT):** Transformers enable the system to capture global dependencies in face data, addressing limitations posed by CNNs in handling long-range pixel interactions. This improves accuracy in recognizing faces with occlusions or varying facial angles.

## 2. Implementation of Advanced Loss Functions:

**ArcFace Loss:** Introduce advanced loss functions like ArcFace, which enhances the discriminative power of the learned features by enforcing angular margin constraints between classes. This ensures better separation between different individuals' facial features, improving recognition accuracy.

## 3. Real-Time Face Recognition with Edge Computing:

To ensure real-time processing, the system can utilize Edge Computing where face recognition tasks are performed on edge devices, reducing latency and the computational burden on central servers. This is particularly useful for live security surveillance, smart cameras, and mobile devices.

## 4. Multi-Modal Data Integration:

**3D Face Recognition:** Incorporating 3D face models addresses limitations caused by pose variations and occlusions, providing a more complete representation of the face.

**Combining Audio and Visual Data:** Using a combination of facial images and voice data can increase recognition accuracy, particularly in environments where visual input alone might be insufficient (e.g., low-light conditions).

## 5. Adversarial Training for Robustness:

Integrate adversarial training techniques to protect the face recognition system from adversarial attacks (e.g., images subtly altered to fool the system). This ensures robustness in real-world applications, where security is paramount.

## VI. CONCLUSION

In recent years, the field of face recognition has witnessed remarkable advancements driven by deep learning techniques. This comprehensive review highlighted various algorithms, architectures, and methodologies that have significantly enhanced the accuracy and efficiency of face recognition systems. By focusing on critical components such as feature extraction, face verification, and identification, we explored how these technologies address challenges related to illumination, expression, pose variations, and occlusion.

The literature survey revealed that approaches like FaceNet, ArcFace, and CosFace have set new benchmarks in the accuracy of face recognition tasks, demonstrating the effectiveness of innovative loss functions and training methodologies. Moreover, the ongoing evolution of datasets and the introduction of robust models tailored to specific challenges such as mask-wearing scenarios indicate a promising trajectory for future research.

Looking ahead, the integration of advanced techniques such as transfer learning, ensemble methods, and attention mechanisms holds the potential to further improve the resilience of face recognition systems. The growing demand for secure and efficient FR applications across various sectors underscores the need for continued exploration and innovation in this domain.

## REFERENCES

1. Taigman, Y., Yang, M., Ranzato, M., & Wolf, L.(2014) "DeepFace: Closing The Gap to Human-Level Performance in Face Verification"[IEEE Conference on Computer Vision and Pattern Recognition (CVPR)]
2. Schroff, F., Kalenichenko, D., & Philbin, J. (2015) "FaceNet: A Unified Embedding for Face Recognition and Clustering" [IEEE Conference on Computer Vision and Pattern Recognition (CVPR)]
3. Parkhi, O. M., Vedaldi, A., & Zisserman, A. (2015)"Deep Face Recognition" [British Machine Vision Conference (BMVC)]
4. Liu, W., Wen, Y., Yu, Z., & Li, M.v(2017) "SphereFace: Deep Hypersphere Embedding for Face Recognition" [IEEE Conference on Computer Vision and Pattern Recognition (CVPR)]
5. Deng, J., Guo, J., Xue, N., & Zafeiriou, S. (2019) "ArcFace: Additive Angular Margin Loss for Deep Face Recognition"[IEEE Conference on Computer Vision and Pattern Recognition (CVPR)]

6. Wang, H., Wang, Y., Zhou, Z., Ji, X., Gong, D., Zhong, J., Li, Z., & Liu, W. (2018) "CosFace: Large Margin Cosine Loss for Deep Face Recognition" [IEEE Conference on Computer Vision and Pattern Recognition (CVPR)]
7. Zhang, J., Zhu, X., Lei, Z., Shi, H., Wang, X., & Li, S. Z. (2020). "RetinaFace: Single-Shot MultiLevel Face Localisation in the Wild" [IEEE Conference on Computer Vision and Pattern Recognition (CVPR)]
8. Cao, Q., Shen, L., Xie, W., Parkhi, O. M., & Zisserman, A. (2021) "Masked Face Recognition for Secure Authentication" [European Conference on Computer Vision (ECCV)]
9. Liu, X., Tang, Y., Yin, G., & Wei, X. (2023) "Dual Attention Networks for Robust Face Recognition" [IEEE Transactions on Pattern Analysis and Machine Intelligence (TPAMI)]
10. Huang, G. B., Mattar, M., Berg, T., & Learned-Miller, E. (2007) "Labeled Faces in the Wild: A Database for Studying Face Recognition in Unconstrained Environments" [University of Massachusetts, Amherst]
11. Wang, H., Wang, Y., Zhou, Z., Ji, X., Gong, D., Zhou, J., Li, Z., & Liu, W. (2018) "CosFace: Large Margin Cosine Loss for Deep Face Recognition" [IEEE Conference on Computer Vision and Pattern Recognition (CVPR)]
12. Zhang, J., Zhu, X., Lei, Z., Shi, H., Wang, X., & Li, S. Z. (2020) "RetinaFace: Single-Shot MultiLevel Face Localisation in the Wild" [IEEE Conference on Computer Vision and Pattern Recognition (CVPR)]
13. A. K. Jain, A. Ross, and S. Prabhakar. (2004) "Face Detection and Recognition: A Comprehensive Survey" [IEEE Transactions on Pattern Analysis and Machine Intelligence (TPAMI)].
14. R. H. H. Hossain, M. A. H. Akhand, and M. A. Rahman. (2015) "Real-Time Face Detection and Recognition for Attendance Management" [International Journal of Computer Applications].
15. J. Redmon, et al. (2016) "Deep Learning for Real-Time Face Detection and Recognition" [Proceedings of the IEEE Conference on Computer Vision and Pattern Recognition (CVPR)].
16. A. S. Khamis, M. A. B. E. Bakar, and I. M. M. Ghani. (2019) "A Review on Real-Time Attendance System Using Face Recognition" [International Journal of Innovative Technology and Exploring Engineering (IJITEE)].



INTERNATIONAL  
STANDARD  
SERIAL  
NUMBER  
INDIA



# INTERNATIONAL JOURNAL OF INNOVATIVE RESEARCH

IN SCIENCE | ENGINEERING | TECHNOLOGY

 9940 572 462  6381 907 438  [ijirset@gmail.com](mailto:ijirset@gmail.com)



[www.ijirset.com](http://www.ijirset.com)

Scan to save the contact details