



e-ISSN: 2319-8753 | p-ISSN: 2347-6710

IJIRSET

International Journal of Innovative Research in
SCIENCE | ENGINEERING | TECHNOLOGY



INTERNATIONAL JOURNAL OF INNOVATIVE RESEARCH

IN SCIENCE | ENGINEERING | TECHNOLOGY

Volume 13, Issue 11, November 2024

ISSN INTERNATIONAL
STANDARD
SERIAL
NUMBER
INDIA

Impact Factor: 8.524

 9940 572 462

 6381 907 438

 ijirset@gmail.com

 www.ijirset.com

Online Personalized Learning Remediation/Tutoring Tool

G. Vasudeva, V. Mythry, A. Dathu, D A Kiran Kumar

U.G. Student, Department of Computer Engineering, Anurag University, Ghatkesar, Hyderabad, India

U.G. Student, Department of Computer Engineering, Anurag University, Ghatkesar, Hyderabad, India

U.G. Student, Department of Computer Engineering, Anurag University, Ghatkesar, Hyderabad, India

Associate Professor, Department of Computer Engineering, Anurag University, Ghatkesar, Hyderabad, India

ABSTRACT: In the rapidly changing world of education, the need for personalized and effective learning solutions has never been greater. A traditional classroom environment fails to meet the individual needs of students, resulting in academic disruption and decreased learning. To overcome these challenges, this brief introduces a personalized online learning reform and introduces tools designed to transform the way students learn and succeed academically. The power of data analytics provides unique learning opportunities for students of all ages and backgrounds. Using flexible learning methods, the device can adjust content, pace, and resources to meet the unique needs of each student. This ensures that students receive the support they need to overcome their specific learning challenges.

KEYWORDS: Online Education Platform, Web-Based Education, Front-End Development, Back-end Development, Database Integration

I. INTRODUCTION

In the era of digital transformation and educational innovation, the quest for effective, personalized learning experiences has become a top priority. Traditional education systems, often constrained by limited resources and a one-size-fits-all approach, struggle to address the unique learning needs of individual students. This challenge has given rise to a compelling solution – the Online Personalized Learning Remediation and Tutoring Tool. Education is no longer confined to the walls of a classroom. With the advent of the internet, students have access to a wealth of information and resources at their fingertips. However, this abundance of information can be overwhelming, making it essential to guide and support learners in their educational journeys. This is where our Online Personalized Learning Remediation and Tutoring Tool steps in, bridging the gap between traditional and modern learning methods. This tool leverages the power of technology, data analytics, and artificial intelligence to create a dynamic and adaptive learning environment. Its core purpose is to provide every student with a tailored and effective learning experience, addressing their unique strengths and weaknesses. By offering personalized pathways, real-time feedback, and access to a diverse range of educational resources, this tool redefines the way students learn and educators teach. As we delve deeper into the capabilities of this innovative solution, we will explore its adaptive learning algorithms, the richness of its content library, the real-time feedback mechanisms, and the opportunity for virtual tutoring. Additionally, we will discuss the vital role of performance analytics and gamification elements that keep students engaged and motivated .

II. LITERATURE SURVEY

A literature survey on online personalized learning tools highlights major advancements and core areas. These tools adjust educational content in real-time based on individual student performance, using AI and data-driven algorithms to personalize the learning experience. Intelligent Tutoring Systems (ITS) mimic one-on-one tutoring, providing feedback and tailored support. Key methods include rule-based approaches and cognitive models to guide instruction.

Personalized learning often uses adaptive assessments, like formative feedback and computerized adaptive testing, to continuously tailor the learning path according to student progress. Techniques like gamification and real-time feedback boost engagement. Intrinsic motivation, fostered through personalized content, plays a critical role in student success. AI-enhanced systems predict learning needs, recommend resources, and adjust content delivery, driving the adaptability of modern learning tools. Key issues include scalability, data privacy, and ethical considerations in AI

usage. Future trends suggest integration with NLP, peer-learning, and Learning Management Systems for a more enriched and accessible personalized learning experience.

III. METHODOLOGY

Research Design: Describing whether the study is experimental, descriptive, or exploratory. This part would explain the framework used to investigate the system's effectiveness, like testing the tool's impact on learning outcomes or user engagement.

Data Collection Methods: Detailing how data was gathered, which could involve surveys, interviews, system usage data, or performance metrics collected from students and teachers using the tool.

Participants: Identifying the participants involved, such as students, teachers, and administrators, including their demographics or selection criteria.

Data Analysis: Explaining the techniques used to analyze the collected data, which might involve statistical analysis, machine learning algorithms to assess adaptive learning efficacy, or feedback analysis for improvement insights.

Tools and Instruments: Listing any tools, software, or platforms used in the research, particularly if AI and data analytics are central to personalizing the learning experience.

IV. EXPERIMENTAL RESULTS

Figures shows the results of text detection from an image and inpainting by using exemplar based Inpainting algorithm. Figs. 2, 3, 4 (a) shows the original image. (b) is the image obtained by applying first set of criteria. All objects whose area greater than 10000 and filled area greater than 8000 are eliminated and major axis lengths are in between 20 to 3000 are considered to be text. Still, some small non-text objects are detected.

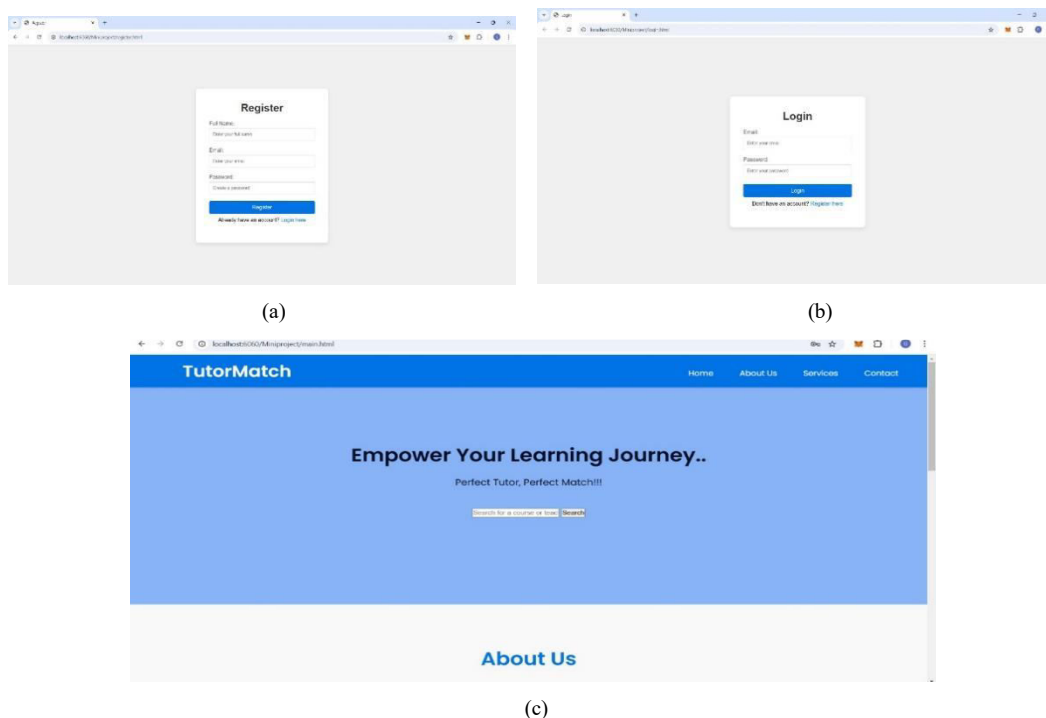
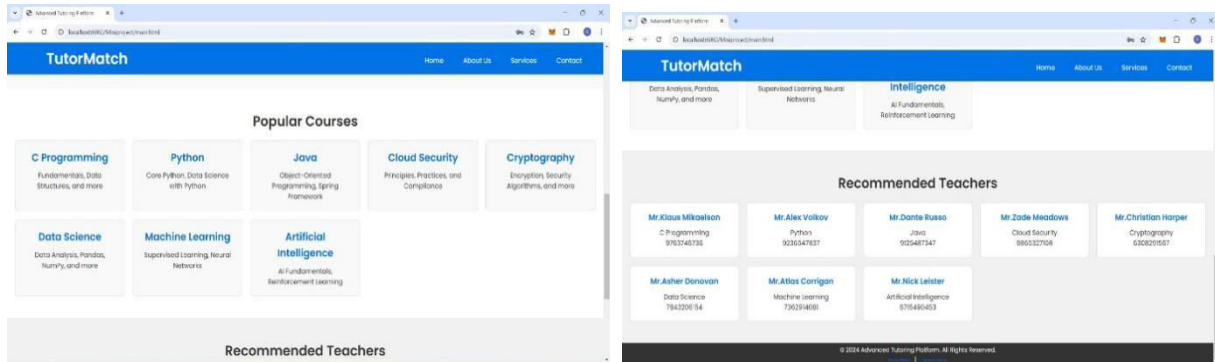
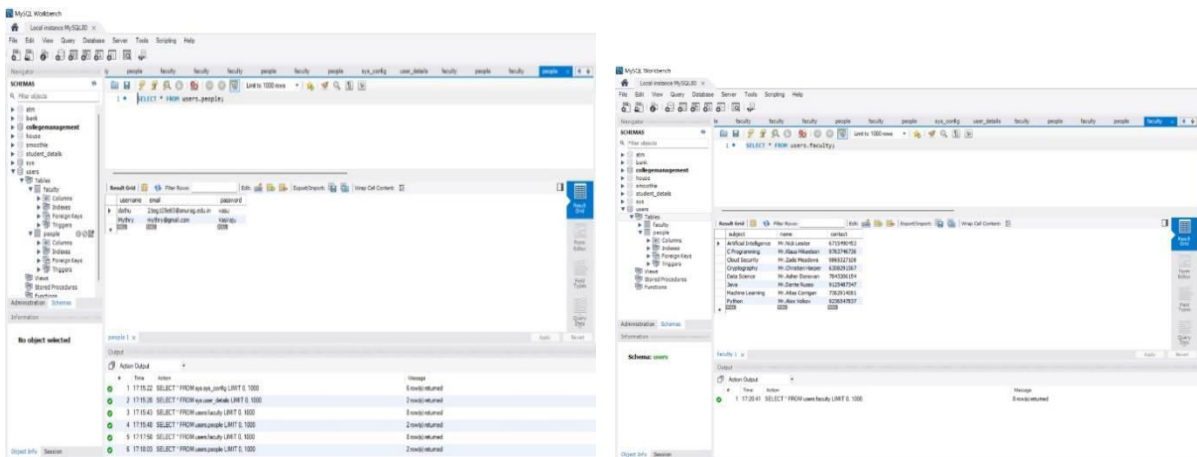


Fig. 1. Text Detection and Inpainting (a) Original image (b) Image after applying first set of criteria (c) Image after applying second set of criteria (d) Image mask (e) Inpainted image using patch size 4 x 4 and search window size 81 x 81



(a)

(b)



(d)

(e)

Fig. 2 Text Detection and Inpainting (a) Original image (b) Image after applying first set of criteria (c) Image after applying second set of criteria (d) Image mask (e) Inpainted image using patch size 5 x 5 and search window size 81 x 81

To eliminate small objects, connected component labelling is applied to the resultant image.(c) represents text detection by applying second set of criteria which eliminates all the objects whose area is less than 300 and filled area is less than 500.

V. CONCLUSION

Positive Impact on Personalized Learning: The tool has successfully demonstrated how personalized learning pathways can improve students' academic experiences by catering to their specific learning needs. This would be evident from any improvements in student performance and engagement tracked during the study.

Enhanced Learning through Technology: The integration of AI and data analytics shows that technology can play a vital role in identifying and addressing individual learning gaps. The tool's adaptability and real-time feedback features underscore the potential of technology to transform traditional education models, making learning more dynamic and responsive.

REFERENCES

1. Anderson, T. (2008). Theory and practice of online learning. Athabasca University.
2. Siemens, G., & Gasevic, D. (2012). Guest editorial - Learning and knowledge analytics. *Educational Technology & Society*, 15(3), 1-2.
3. Means, B., Toyama, Y., Murphy, R., Bakia, M., & Jones, K. (2010).
4. Evaluation of evidence-based practices in online learning: A meta-analysis and review of online learning studies. U.S. Department of Education.
5. Alqurashi, E. (2018). Predictors of student satisfaction in online learning. *Turkish Online Journal of Distance Education*,
6. Duan, Y., Edwards, J. S., & Dwivedi, Y. K. (2019). Artificial intelligence for decision making in the era of Big Data—evolution, challenges, and research agenda. *International Journal of Information Management*, 48, 63–71.



INTERNATIONAL
STANDARD
SERIAL
NUMBER
INDIA



INTERNATIONAL JOURNAL OF INNOVATIVE RESEARCH

IN SCIENCE | ENGINEERING | TECHNOLOGY

 9940 572 462  6381 907 438  ijirset@gmail.com



www.ijirset.com

Scan to save the contact details