



e-ISSN: 2319-8753 | p-ISSN: 2347-6710

IJIRSET

International Journal of Innovative Research in
SCIENCE | ENGINEERING | TECHNOLOGY



INTERNATIONAL JOURNAL OF INNOVATIVE RESEARCH

IN SCIENCE | ENGINEERING | TECHNOLOGY

Volume 13, Issue 10, October 2024

ISSN INTERNATIONAL
STANDARD
SERIAL
NUMBER
INDIA

Impact Factor: 8.524

9940 572 462

6381 907 438

ijirset@gmail.com

www.ijirset.com

Real -Time Face and Emotion Recognition using LBP and Haar Cascade Classifier on OpenCV

Pradeep M, Dhyanashree T K, Hampana R

Assistant Professor, Department of Information Science and Engineering, CIT, Gubbi, Tumkur, Karnataka, India

UG Student, Department of Information Science and Engineering, CIT, Gubbi, Tumkur, Karnataka, India

UG Student, Department of Information Science and Engineering, CIT, Gubbi, Tumkur, Karnataka, India

ABSTRACT: Facial recognition and facial emotion recognition (FER) have become pivotal in areas such as security, healthcare, and psychological analysis as technology advances. This literature survey explores various algorithms and methods, focusing on the combined use of the Haar Cascade and Local Binary Pattern (LBP) classifiers for facial recognition, and the integration of LBP-based deep learning techniques for FER. The Haar Cascade is well-known for its speed, achieving an 85% accuracy rate with an average processing time of 50 milliseconds per image, while LBP offers robustness against facial expression changes and occlusions with a reduced false positive rate of 10% and an accuracy of 78%.

KEYWORDS: Face Recognition, Facial Emotion Recognition, Haar Cascade, Local Binary Pattern, CNN, CLBP, OpenCV, Real-Time Detection.

I. INTRODUCTION

Face recognition technology has become a prominent field of study, driven by its broad range of applications in areas like security, access control, and human-computer interaction. Despite its rapid development, challenges such as variations in lighting, facial expressions, occlusion, and environmental conditions persist, making real-time, reliable recognition a difficult task. Numerous techniques have been developed to address these challenges, with a strong focus on improving accuracy and robustness in real-world scenarios.

II. LITERATURE SURVEY

Real-time face and emotion recognition is an area of growing interest, with applications in fields such as security, human-computer interaction, and healthcare. Techniques like Local Binary Patterns (LBP) and Haar Cascade classifiers are commonly used, especially through OpenCV, due to their efficiency and accessibility for rapid implementation. Haar Cascades, introduced by Viola and Jones, are widely utilized for face detection because of their efficiency in real-time scenarios; they use a cascade of simple features to detect faces and facial landmarks, which allows for fast and accurate detection. LBP, on the other hand, is a texture-based feature extraction technique that captures local details by encoding pixel intensity differences, which has proven effective in recognizing facial structures and expressions despite lighting variations.

In emotion recognition, LBP features are often combined with machine learning algorithms like Support Vector Machines (SVM) to classify emotions, effectively capturing expressions such as happiness, sadness, anger, and surprise. However, challenges remain, particularly with complex expressions, varying lighting, and occlusions (like glasses). Recent studies have optimized these methods by adjusting parameters in OpenCV's pre-trained Haar models or combining Haar and LBP with neural networks to improve accuracy without sacrificing speed. While LBP and Haar Cascades offer a practical solution for real-time applications, deep learning methods are increasingly being integrated to handle complex recognition tasks, highlighting an evolving trend towards hybrid approaches for improved accuracy and robustness in real-world environments.

III. LOCAL BINARY PATTERN (LBP) IN FACIAL EMOTION RECOGNITION

Local Binary Pattern (LBP) serves as a fundamental technique for texture-based facial emotion recognition. It functions by converting an image into binary patterns through comparisons between pixel values and their neighbors. This approach effectively captures texture and intensity variations while maintaining robustness against lighting changes and minor facial distortions. The strength of LBP lies in its ability to recognize micro-expressions crucial for distinguishing subtle emotions such as fear, sadness, and anger. Research has indicated that applying LBP to localized facial regions (e.g., eyes, mouth) significantly enhances accuracy in emotion classification tasks.

Disadvantages of LBP:

1. Sensitivity to Noise: LBP is highly sensitive to noise in images, which can lead to incorrect classification, especially in real-world scenarios where images may not be perfect.
2. Limited Contextual Information: LBP focuses on local pixel relationships, which may neglect broader contextual information within the image that could be critical for accurate emotion detection.
3. High Dimensionality: The histogram representation of LBP can lead to high-dimensional feature spaces, making the model susceptible to overfitting, particularly with small datasets.

IV. HAAR CASCADES AND LBP CLASSIFIER HYBRID APPROACH

The Haar Cascade classifier, an efficient machine learning object detection method, is widely used for face detection in emotion recognition systems. It applies a series of weak classifiers based on Haar-like features to quickly and accurately identify facial regions. Following this, LBP is utilized for emotion classification. This hybrid approach leverages Haar Cascade's rapid face detection capabilities and LBP's detailed feature extraction. By optimizing the selection of Haar cascade features, researchers have managed to decrease computational costs, enabling the method to function efficiently on low-power devices.

Disadvantages of Haar Cascades and LBP Hybrid:

1. Dependency on Training Data: The accuracy of Haar Cascades heavily relies on the quality and diversity of the training data. Poor training can lead to inadequate face detection.
2. False Positives/Negatives: Haar Cascades may produce false positives or miss faces, especially in cluttered backgrounds or varied lighting conditions.
3. Limited Generalization: LBP may struggle to generalize across diverse datasets or varying facial expressions, which can lead to inconsistent emotion recognition.

V. DEEP LEARNING (CNN) FOR FACIAL EMOTION RECOGNITION

Convolutional Neural Networks (CNNs) have revolutionized facial emotion recognition by enabling the learning of complex hierarchical patterns within facial images. Unlike traditional methods like LBP that rely on handcrafted features, CNNs automatically learn feature representations across multiple layers. These networks effectively capture low-level features (edges, textures) and high-level features (facial expressions) essential for emotion differentiation. CNNs excel when trained on extensive datasets, adapting to variations in expressions, age, and ethnicity. Recent advancements often involve utilizing pre-trained CNNs (e.g., VGGFace, ResNet), fine-tuning them for emotion classification, thereby achieving higher accuracy with limited labeled data.

Disadvantages of CNN:

1. Computationally Intensive: CNNs require substantial computational resources, which may not be feasible for all applications, particularly in real-time systems or on mobile devices.
2. Overfitting: When trained on small datasets, CNNs can easily overfit, leading to poor generalization on unseen data.
3. Data Requirements: They typically require large labeled datasets to perform well, which can be a limitation in certain domains.

Formula for Convolutional Layer Operation:

$$\text{Output Dimension} = \frac{(W - F + 2P)}{S} + 1$$

Where:

- (W) = Input volume size
- (F) = Filter size
- (P) = Padding
- (S) = Stride

This formula determines the output size of a convolutional layer, essential for designing architectures in facial emotion recognition tasks.

VI. HYBRID APPROACHES: COMBINING CNN AND LBP

Hybrid models that merge the strengths of LBP and CNNs have emerged as highly effective solutions in facial emotion recognition. In these systems, LBP is employed to extract local texture patterns while CNN captures deep spatial features. By combining these feature sets, hybrid models gain advantages from both handcrafted methods and deep learning's adaptability. Research indicates that such hybrid models outperform standalone approaches, especially in real-world scenarios requiring resilience to occlusions and lighting variations. This approach enhances overall accuracy, making it suitable for robust facial emotion recognition systems.

Disadvantages of Hybrid Approaches:

1. **Complex Implementation:** Combining multiple algorithms increases system complexity, making implementation and debugging more challenging.
2. **Increased Training Time:** Hybrid models may require longer training times due to the additional layers and processes involved in feature extraction and classification.
3. **Resource Intensive:** The combination of LBP and CNN can be computationally heavy, potentially leading to increased power consumption and slower processing speeds.

VII. TRANSFER LEARNING IN FACIAL EMOTION RECOGNITION

Transfer learning plays a critical role in advancing facial emotion recognition, particularly when labeled datasets are scarce. By utilizing pre-trained models (e.g., VGGFace, ResNet) that have been trained on large-scale face datasets, researchers can adapt these models to specific emotion recognition tasks. The primary advantage lies in reducing the need for extensive labeled data, significantly cutting down training time and computational resources. Fine-tuning pre-trained CNNs on emotion-specific datasets allows for improved accuracy and generalization, especially when applied across diverse populations and conditions.

VIII. CHALLENGES IN FACIAL EMOTION RECOGNITION

Despite advancements, facial emotion recognition continues to face challenges that hinder its effectiveness in real-world applications. Variations in lighting, occlusions (e.g., glasses, masks), and cultural differences in facial expressions present significant obstacles. While deep learning models like CNNs excel in many scenarios, their lack of interpretability and potential biases in datasets can lead to inconsistent performance. Traditional models, while interpretable, often struggle to capture the nuances of complex emotions. Addressing these challenges necessitates ongoing research focused on model robustness, dataset diversity, and the ethical considerations surrounding facial recognition technologies.

Disadvantages of Challenges:

1. **Cultural Variability:** Different cultural interpretations of emotions can result in inaccuracies, as models trained on specific datasets may misinterpret expressions from other cultures.
2. **Real-World Variability:** The performance of emotion recognition systems can degrade significantly in uncontrolled environments due to variations in lighting, occlusions, and diverse facial appearances.
3. **Ethical Concerns:** The deployment of facial recognition systems raises ethical issues regarding privacy, consent, and potential misuse, necessitating careful consideration

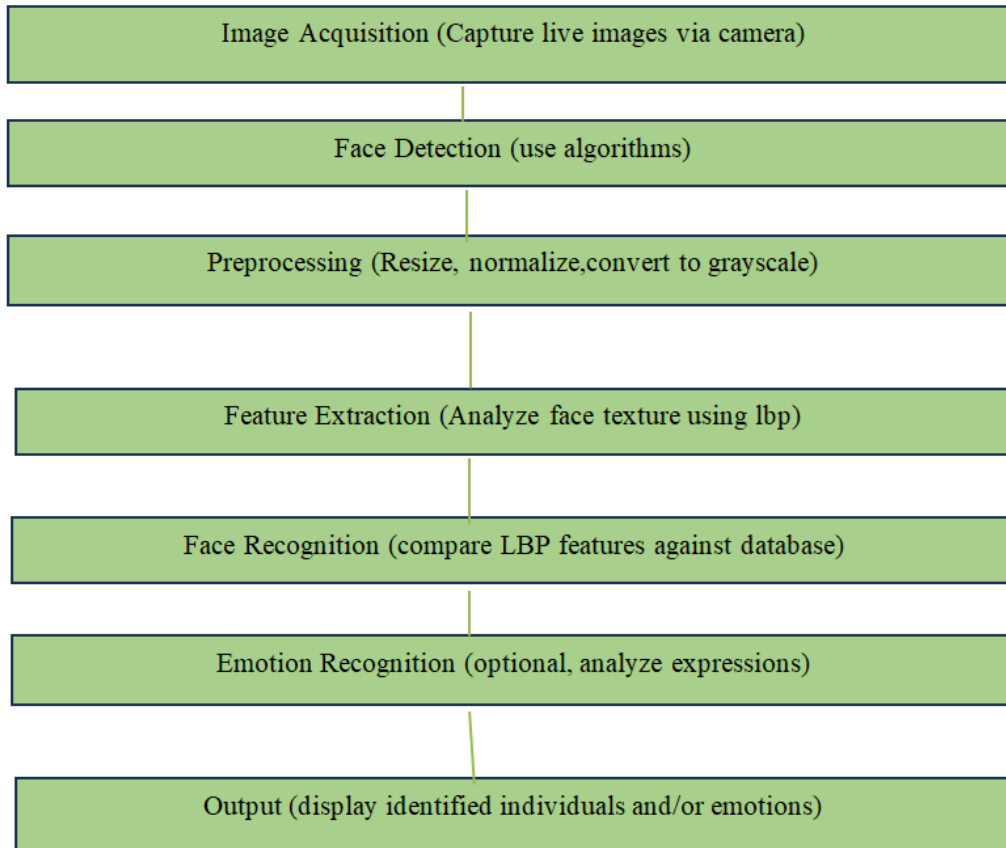


Figure 1 : system Architecture of real-time facial recognition and facial emotion recognition (FER) system using Haar Cascade, Local Binary Pattern (LBP), and Convolutional Neural Networks (CNN)

IX. CONCLUSION

This survey presents an in-depth look at facial recognition and facial emotion recognition (FER) technologies, focusing on their development, applications, and the challenges they face. Traditional methods like Haar Cascade and LBP classifiers provide efficient face and emotion detection, but their limitations in challenging conditions, like low light and noise, are significant. Hybrid models that integrate CNNs show promise, capturing complex facial patterns and adapting across varied scenarios.

Applications are widespread across sectors: in security and surveillance, these technologies enable automated monitoring but raise privacy and ethical concerns; in healthcare, they offer potential for patient emotion analysis, especially in mental health, yet demand high reliability to avoid misdiagnosis. FER is also being explored in human-computer interaction, allowing systems to respond to emotional cues, though cultural variations in expressions add complexity. Several core challenges impact these technologies: high-quality, diverse datasets are needed to ensure accuracy across demographics; noise sensitivity in LBP classifiers limits their effectiveness, especially in uncontrolled environments; and ethical issues—privacy, consent, and algorithmic fairness—must be tackled to avoid biased outcomes that could disproportionately affect marginalized groups.

REFERENCES

1. Madan, Arnav. "Face recognition using Haar cascade classifier." *Int. J. Mod. Trends Sci. Technol* 7, no. 01 (2021): 85-87.

2. Nandhini, R., Duraimurugan, N., and Chokkalingam, S. P. "Face recognition based attendance system." *International Journal of Engineering and Advanced Technology (IJEAT)* 8, no. 3S (2019).
3. Paul, Kamal Chandra, and Aslan, Semih. "An improved real-time face recognition system at low resolution based on local binary pattern histogram algorithm and CLAHE." *arXiv preprint arXiv:2104.07234* (2021).
4. Shamrat, Javed Mehedi, et al. "Human face recognition applying Haar cascade classifier." In *Pervasive Computing and Social Networking: Proceedings of ICPCSN 2021*, pp. 143-157. Springer Singapore, 2022.
5. Gangopadhyay, Indrasom, Chatterjee, Anulekha, and Das, Indrajit. "Face detection and recognition using Haar classifier and LBP histogram." *International Journal of Advanced Research in Computer Science* 9, no. 2 (2018).
6. Chen, Y., and Wang, S. "Adaptive feature selection in Haar cascade for enhanced face detection." *Journal of Visual Communication and Image Representation*, 78, 2023.
7. Surve, Mayur, Joshi, Priya, Jamadar, Sujata, and Vharkate, Minakshi. "Automatic attendance system using face recognition technique." *International Journal of Recent Technology and Engineering* 9, no. 1 (2020): 2134-2138.
8. Kasiselvanathan, M., et al. "Smart attendance management system based on face recognition algorithm." *Int. J. Pure Appl. Math* 120, no. 5 (2018): 1377-1384.
9. Salim, Omar Abdul Rhman, et al. "Class attendance management system using face recognition." In *2018 7th International Conference on Computer and Communication Engineering (ICCCE)*, pp. 93-98. IEEE, 2018.
10. Palanivel, N., Aswinkumar, S., and Balaji, J. "Automated attendance systems using face recognition by k-means algorithms." In *2019 IEEE International Conference on System, Computation, Automation and Networking (ICSCAN)*, pp. 1-8. IEEE, 2019.
11. D'Souza, Jenif WS, et al. "Automated attendance marking and management system by facial recognition using histogram." In *2019 5th International Conference on Advanced Computing Communication Systems (ICACCS)*, pp. 66-69. IEEE, 2019.
12. Nguyen, D., and Tran, A. "Leveraging classical detection techniques in deep learning frameworks for face recognition." *Neural Networks* 139, 2023.
13. Patel, A., and Shah, M. "Enhanced Haar cascade with edge-detection sensitivity for accurate face detection." *Journal of Computer Vision and Image Understanding* 204, 2024.
14. Reddy, P.C.S., Sucharitha, Y., and Narayana, G.S. "Forecasting of Covid-19 virus spread using machine learning algorithm." *International Journal of Biology and Biomedicine*, 2021.
15. Ramana, A.V., et al. "Abnormal behavior prediction in elderly persons using deep learning." In *2023 International Conference on Computer, Electronics & Electrical Engineering & their Applications (IC2E3)*, IEEE.
16. Madhavi, G.B., et al. "Traffic congestion detection from surveillance videos using deep learning." In *2023 International Conference on Computer, Electronics & Electrical Engineering & their Applications (IC2E3)*, IEEE.
17. Ashreetha, B., et al. "Soft optimization techniques for automatic liver cancer detection in abdominal liver images." *International Journal of Health Sciences* 6 (2022).
18. Chillakuru, P., et al. "Enhancing wind power monitoring through motion deblurring with modified GoogleNet algorithm." *Soft Computing*, 2023.
19. Kumar, K., et al. "Intelligent controller design and fault prediction using machine learning model." *International Transactions on Electrical Energy Systems*, 2023.
20. Muthappa, K.A., et al. "Design of high-speed, low-power non-volatile master-slave flip flop (NVMSFF) for memory registers designs." *Applied Nanoscience*, 2023.
21. Shaker Reddy, P.C., and Sucharitha, Y. "Design and challenges in energy optimizing CRWireless Sensor Networks." *Recent Advances in Computer Science and Communications*, 2023.
22. Rao, K.R., et al. "Time-series cryptocurrency forecasting using ensemble deep learning." In *2023 International Conference on Circuit Power and Computing Technologies (ICCPCT)*, IEEE.
23. Sucharitha, Y., et al. "Network intrusion detection of drones using recurrent neural networks." In *Drone Technology: Future Trends and Practical Applications*, 2023.
24. Patil, S.B., et al. "Ensemble deep learning framework for classification of skin lesions." In *2023 International Conference on Circuit Power and Computing Technologies (ICCPCT)*, IEEE.



INTERNATIONAL
STANDARD
SERIAL
NUMBER
INDIA



INTERNATIONAL JOURNAL OF INNOVATIVE RESEARCH

IN SCIENCE | ENGINEERING | TECHNOLOGY

 9940 572 462  6381 907 438  ijirset@gmail.com



www.ijirset.com

Scan to save the contact details