



e-ISSN: 2319-8753 | p-ISSN: 2347-6710

IJIRSET

International Journal of Innovative Research in
SCIENCE | ENGINEERING | TECHNOLOGY

INTERNATIONAL JOURNAL OF INNOVATIVE RESEARCH

IN SCIENCE | ENGINEERING | TECHNOLOGY

Volume 13, Issue 10, October 2024

ISSN INTERNATIONAL
STANDARD
SERIAL
NUMBER
INDIA

Impact Factor: 8.524

9940 572 462

6381 907 438

ijirset@gmail.com

www.ijirset.com

A Review Study on Linear Time-History Analysis of Reinforced Concrete Bridge under near Field Earthquake Ground Motion

Namrata Vasava, Mr. Snehanshu Nath

Research Scholar, Parul University, Vadodara, Gujarat, India

Assistant Professor, Parul University, Vadodara, Gujarat, India

ABSTRACT: Reinforced concrete bridges are critical components of transportation infrastructure, and their performance during seismic events is of paramount importance. This review paper focuses on the linear time history analysis (LTHA) of reinforced concrete bridges subjected to near-field ground motions. The paper discusses the principles of LTHA, the characteristics of near-field ground motions, the impact on bridge design and performance, and recent advancements in analytical techniques. This research paper investigates the seismic response of continuous reinforced concrete bridges subjected to near-fault ground motions. With increasing urbanization and infrastructure development in seismically active regions, understanding the behavior of bridges under such conditions is crucial for enhancing their resilience. The study employs advanced numerical modeling techniques to analyze the dynamic response of typical bridge configurations under various ground motion scenarios. Results indicate that near-fault ground motions significantly influence the seismic performance of continuous reinforced concrete bridges, leading to increased demands on structural elements. Recommendations for design improvements and retrofitting strategies are discussed to mitigate potential risks.

KEYWORDS: Duration, intensity, magnitude, far-fault earthquake, seismic retrofitting, RC bridge, seismic bearings.

I. INTRODUCTION

This paper investigates the effects of earthquakes duration, intensity, and magnitude on the seismic response of reinforced concrete (RC) bridges retrofitted with seismic bearings, such as elastomeric bearings, lead rubber bearings (LRB), and friction pendulum bearings (FPB). In order to investigate the effects of the seismic isolation, the condition of the Deck with a rigid connection on the cap beams and abutments was investigated as the first model. The EB, LRB and FPB bearings are used between the superstructure and substructure of the studied bridge in the second, third and fourth models, respectively.

Recent seismic events have underscored the vulnerability of reinforced concrete bridges to earthquakes, particularly those located in near-field regions. The near-field ground motion presents unique characteristics, including high-frequency content and significant intensity, which can lead to complex responses in bridge structures. Linear time history analysis provides a robust framework for evaluating the dynamic response of these structures under seismic loading. Continuous reinforced concrete bridges are critical components of transportation infrastructure, particularly in earthquake-prone areas. Their design must account for various loading conditions, including seismic forces. Recent advancements in seismic research have highlighted the unique challenges posed by near-fault ground motions, which can exhibit complex and high-amplitude ground motion characteristics. This paper aims to analyze the seismic response of continuous reinforced concrete bridges under such conditions. The introduction sets the stage for the study by discussing the significance of bridges in transportation infrastructure and their vulnerability to seismic activities. It outlines the increasing frequency and intensity of earthquakes, emphasizing the need for robust design methodologies. The section concludes with the objectives of the research and the questions it aims to answer, providing insights into their performance and potential vulnerabilities.

This paper presents a comprehensive analysis of the seismic performance of reinforced concrete bridges. The study investigates the critical factors affecting their behavior during seismic events, including material properties, structural design, and environmental conditions. Using advanced simulation techniques and performance assessment criteria, the

research identifies vulnerabilities and proposes design modifications to enhance resilience. The findings highlight the importance of adopting performance-based design approaches in the development of safer and more durable bridge structures in seismically active regions. Reinforced concrete (RC) bridges are critical components of transportation infrastructure, and their resilience during seismic events is paramount to ensuring public safety.

This paper presents an assessment of RC bridge columns subjected to both horizontal and vertical ground motions recorded during recent earthquakes. The study employs numerical simulations and experimental data to evaluate the performance of these columns under varying seismic loading conditions. The results highlight the importance of considering both horizontal and vertical components of ground motion in the design and evaluation of bridge structures.

II. LITERATURE REVIEW

Seismic Performance of RC Structures

Research has shown that the design and detailing of reinforcement play a crucial role in the seismic performance of RC structures. Studies by Priestley et al. (1996) and others have emphasized the importance of ductility and energy dissipation in achieving desirable seismic behavior. Numerous studies have investigated the seismic performance of RC structures. Traditional design methods predominantly focus on lateral loading due to horizontal ground motions. However, the impact of vertical ground motions has gained attention in recent years, particularly in relation to the overall stability and performance of bridge structures. Research has shown that the design and detailing of reinforcement play a crucial role in the seismic performance of RC structures. Studies by Priestley et al. (1996) and others have emphasized the importance of ductility and energy dissipation in achieving desirable seismic behavior.

Lap Splices in Reinforced Concrete

Lap splices are often used to extend reinforcing bars when they are too short. However, the presence of lap splices can create weak points in the structure, potentially leading to premature failure during seismic events. Previous studies, such as those by AASHTO (2010), have outlined guidelines for splice lengths, but these do not fully address their performance under dynamic loading.

Numerous studies have explored the seismic behavior of bridges, focusing on different types of structures and ground motion characteristics. Researchers such as Zhang et al. (2018) and Chen & Wu (2019) have highlighted the significance of near-fault effects, emphasizing the need for specialized design considerations. The FEMA P-751 report (2009) outlines methodologies for assessing bridge performance during seismic events, while the ASCE 7-16 guidelines provide a framework for seismic design. Existing literature indicates a gap in targeted research on continuous reinforced concrete bridges specifically under near-fault conditions, thus motivating this study.

Ground Motion Characteristics

Earthquake ground motions can be decomposed into horizontal and vertical components. The horizontal components are typically more significant in terms of structural damage, but vertical motions can exacerbate the effects of horizontal loading and induce additional stresses in structural elements.

Historical performance observations from past earthquakes. Theoretical models and simulation techniques used in seismic analysis. Design codes and guidelines related to seismic performance. Gaps in current research that this study aims to address.

Earthquake ground motions can be decomposed into horizontal and vertical components. The horizontal components are typically more significant in terms of structural damage, but vertical motions can exacerbate the effects of horizontal loading and induce additional stresses in structural elements.

Lap Splices in Reinforced Concrete

Lap splices are often used to extend reinforcing bars when they are too short. However, the presence of lap splices can create weak points in the structure, potentially leading to premature failure during seismic events. Previous studies, such as those by AASHTO (2010), have outlined guidelines for splice lengths, but these do not fully address their performance under dynamic loading.

Principles of Linear Time History Analysis

Basic Concepts

Linear Time History Analysis involves subjecting a structural model to a time-dependent ground motion input to assess its dynamic response. This method allows engineers to capture the effects of varying loading conditions through the use of recorded or synthetic ground motion data. The analysis uses recorded ground motion data (time histories) from past earthquakes. These records are often scaled to represent potential future seismic events at the site.

Geometry: Create a detailed finite element model of the bridge, incorporating relevant components such as girders, slabs, columns, and foundations.

Material Properties: Define the mechanical properties of concrete and reinforcement, considering factors like modulus of elasticity, yield strength, and Poisson's ratio.

III. STUDY OBJECTIVE

Assessment of Structural Response:

Evaluate the dynamic response of reinforced concrete bridges to near-field earthquake ground motions.

Material Behavior Analysis: Investigate the behavior of concrete and reinforcement materials under seismic loading.

NONLINEAR TIME HISTORY ANALYSIS

The research and design of building structures for seismic impact is most often done on the basis of the spectral approach. It determines the maximum response of the structure to an earthquake. The application of the spectral approach has proven its expediency and reliability in the usual design of buildings. The disadvantage of this approach is the lack of data on the response of the structure over time, which is essential for special types of structures such as those with: - many degrees of freedom and close periods; - structures with sensitive equipment installed; - special structures, such as nuclear power plants, dam walls, as well as in the construction of bridges, tall buildings, etc. In this method, direct numerical integration of the differential equations of motion of the structure is applied - item of Euro code. Nonlinear dynamic analysis is able to take into account all important characteristics of the nonlinear seismic response of complex spatial structures such as the influence of higher eigenforms on the response, torsional response, change in the load path due to nonlinear response, etc. Unfortunately, this method is very time consuming and is rarely used, most often for more responsible buildings and facilities. This method is very sensitive to the input parameters of earth motion and it is necessary to be careful when selecting and scaling the necessary accelerograms. The impression of the authors is that its application is still very limited.

Artificial accelerograms There are two main approaches for generation an accelerogram - to use real earthquake records or synthetic (artificial accelerograms). Most commonly artificial accelerograms are used for numerical simulations. This is also the approach for the present work. The requirements for them according to Eurocode 8 are: • To use at least three accelerograms - item 3.2.3.1.2 (4) a. No details are given, but it is assumed that in spatial analysis this means that for each of the three main directions (x, y and z) at least one accelerogram should be set. • The same accelerogram cannot be used simultaneously in both horizontal directions - item 3.2.3.1.1 (2) The minimum duration "Ts" of the "stationary part" (the term is from Eurocode 8) of the accelerogram is 10 sec - item 3.2.3.1.2 (3). According to the authors, it is more appropriate to use the term "active part". In the present work Ts = 10 sec. The case study bridge is designed for Peak Ground Acceleration of 0.32g (475 years return period).

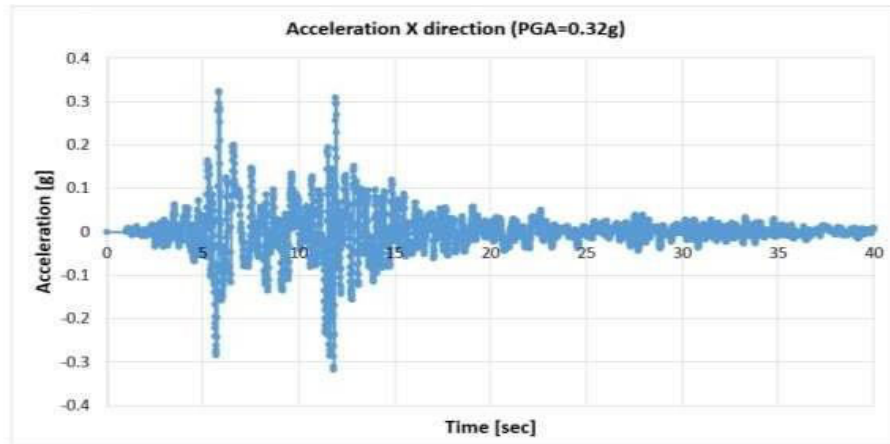


Fig. 1. Accelerogram in X direction (PGA=0.32g).

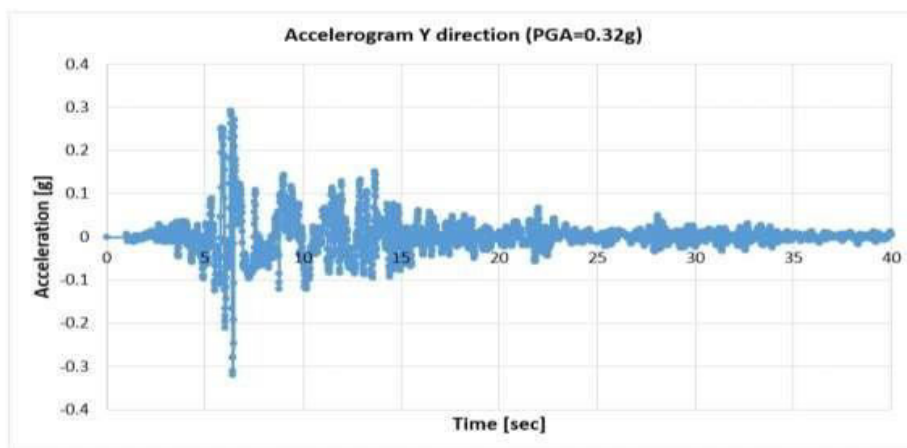


Fig. 2. Accelerogram in Y direction (PGA=0.32g).

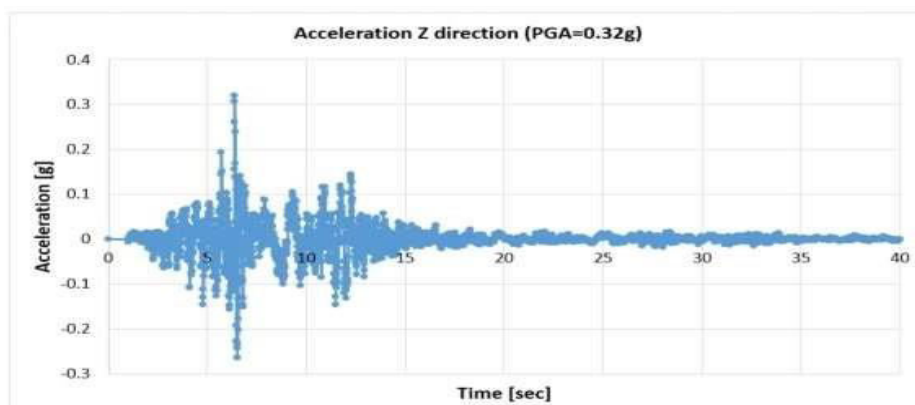


Fig. 3. Accelerogram in Z direction (PGA=0.32g).

Modal Analysis: Determine the fundamental frequency and mode shapes of the bridge structures.
 The modeling of reinforced concrete bridges for LTHA involves:
 Defining material properties and geometrical configurations
 Implementing appropriate boundary conditions

Incorporating nonlinearities where necessary

Dynamic Response Analysis: Use software tools (e.g., SAP2000, ANSYS, or OpenSees) to perform LTHA, applying the ground motion time histories to the bridge model.

Influence of Ground Motion Characteristics: Analyze how different characteristics of near-field ground motions affect bridge performance. Earthquake ground motions can be decomposed into horizontal and vertical components. The horizontal components are typically more significant in terms of structural damage, but vertical motions can exacerbate the effects of horizontal loading and induce additional stresses in structural elements.

Damping Mechanisms: Examine the effects of different damping mechanisms on the seismic response of bridges.

Comparative Analysis: Compare the performance of different bridge designs (e.g., span length, cross-section) under seismic loading.

Pushover Analysis Correlation: Correlate results of linear time history analysis with pushover analysis outcomes.

Seismic Resilience Evaluation: Assess the resilience and robustness of existing bridge designs against seismic events.

Damage Prediction: Develop models for predicting potential damage to bridge components during seismic events.

Design Code Compliance: Evaluate the compliance of bridge designs with current seismic design codes and standards.

Parameter Sensitivity Studies: Conduct sensitivity analyses to identify key parameters influencing bridge performance.

Soil-Structure Interaction: Analyze the effects of soil-structure interaction on the seismic response of bridge systems.

Performance Level Definitions: Establish performance levels for bridges under various seismic intensity levels.

Retrofitting Strategies: Propose effective retrofitting strategies for enhancing the seismic performance of existing bridges.

Life-Cycle Cost Analysis: Evaluate the life-cycle costs associated with different seismic-resistant designs and retrofitting methods.

Vulnerability Assessment: Conduct a vulnerability assessment of bridges in seismically active regions.

Field Data Validation: Validate the findings of the analysis with field data from past earthquakes.

Multi-Scenario Simulation: Perform simulations for multiple earthquake scenarios to understand varying response characteristics.

IV. METHODOLOGY

Data Collection

Ground motion data was collected from various seismic events, including the 2011 Tōhoku earthquake and the 2010 Haiti earthquake. The data sets included both horizontal and vertical acceleration records.

Numerical Simulation

Finite element analysis (FEA) was used to model the behavior of RC bridge columns under combined horizontal and vertical ground motions. The models were calibrated using experimental data from shake table tests on scaled bridge column specimens.

Model Development: A finite element model of a typical continuous reinforced concrete bridge is developed using software such as SAP2000 and ANSYS. Key parameters such as span length, material properties, and cross-sectional dimensions are defined.

Ground Motion Selection: A suite of near-fault ground motions is selected from the Pacific Earthquake Engineering Research (PEER) database, focusing on records that exhibit significant pulse effects. Ground motion duration refers to the length of time that seismic shaking occurs during an earthquake. Longer durations can lead to increased energy input into structures, affecting their response.

Dynamic Analysis: Time history analysis is conducted to evaluate the seismic response of the bridge model. Parameters such as displacement, acceleration, and shear forces are monitored across various structural elements.

A series of full-scale RC bridge pier specimens were constructed, incorporating various lap splice configurations. Each specimen was subjected to cyclic loading to simulate seismic conditions. Key variables included splice length, bar diameter, and concrete strength.

Performance Assessment: The results are assessed against established performance criteria, including drift limits and shear capacity, to determine the structural adequacy and potential for damage. Seismic performance was evaluated based on criteria such as maximum lateral load, ductility ratio, and energy dissipation capacity. Performance-based design methodologies were employed to assess the reliability of the bridge piers.

Modeling and Simulation: Details on the finite element modeling of reinforced concrete bridges using software such as SAP2000 or ANSYS. **Seismic Loading Scenarios:** Description of the seismic loads applied in the analysis based on real earthquake data. **Definition of the performance metrics** used to evaluate bridge response, including displacement, stress, and damage indices. Discussion of how different parameters (material properties, geometrical configurations) were varied to assess their impact on performance. **Modeling and Simulation:** Details on the finite element modeling of reinforced concrete bridges using software such as SAP2000 or ANSYS. **Seismic Loading Scenarios:** Description of the seismic loads applied in the analysis based on real earthquake data. **Performance Criteria:** Definition of the performance metrics used to evaluate bridge response, including displacement, stress, and damage indices. **Sensitivity Analysis:** Discussion of how different parameters (material properties, geometrical configurations) were varied to assess their impact on performance.

Impact of Duration on Hysteretic Behavior

Increased Ductility: Longer shaking durations can allow for more cycles of loading, potentially increasing the ductility of the columns. **Accumulated Damage*:** Prolonged exposure to seismic forces can lead to accumulated damage, affecting the stiffness and strength of the columns. **Effect Repeated loading** can cause fatigue in the materials, which can reduce the overall performance of the columns.

Experimental Setup

A series of full-scale RC bridge pier specimens were constructed, incorporating various lap splice configurations. Each specimen was subjected to cyclic loading to simulate seismic conditions. Key variables included splice length, bar diameter, and concrete strength. The experimental results indicated that lap splice configurations significantly influenced the seismic performance of the bridge piers. Specimens with longer lap splices exhibited improved ductility and energy dissipation compared to those with shorter splices.

Finite Element Modeling

The specimens were modeled using finite element analysis software (e.g., ABAQUS). Material properties, boundary conditions, and loading protocols were defined to accurately replicate the experimental conditions. The finite element models corroborated the experimental findings, revealing that lap splices can alter the distribution of stress and strain within the pier. The models provided insights into failure mechanisms, highlighting the critical regions where lap splices may lead to vulnerabilities.

Nonlinear Time History Analysis:

Explain the principles of nonlinear analysis. Discuss the selection of ground motion records for dynamic analysis. Detail the numerical methods used (e.g., dynamic implicit integration methods). This involves recording the response of the bridge over time as it reacts to moving loads. Data can include displacements, accelerations, and strains.

Importance of Near-Field Ground Motion:

Near-field ground motions may have higher frequency content and more intense shaking compared to far-field motions. The response of truss bridges can differ significantly under these conditions, necessitating specific analysis

V. SUMMARY OF BRIDGE COLLAPSE ANALYSIS

A post-tensioned reinforced concrete truss bridge collapsed during construction in March 2018. The collapse occurred while re-tensioning a diagonal member, which was not part of the original plan. Numerical analyses identified shear failure at a node due to increased axial force and inadequate cold joint conditions. The bridge was never in safe conditions due to design errors and underestimation of forces. The study emphasizes the importance of proper construction details and phases in non-symmetric truss systems to prevent failures.

VI. RESULTS AND DISCUSSION

Displacements and Accelerations: Extract key response parameters such as displacements, accelerations, and internal forces in critical elements (e.g., columns, connections).

Comparative Analysis: Compare results with design standards to evaluate performance under seismic loading.- Comparative analysis of bridge models under various seismic loads, Discussion of observed failure modes and potential weaknesses in the design.Evaluation of design modifications and their effectiveness in improving performance.

This study underscores the importance of understanding the influence of lap splices on the seismic performance of RC bridge piers. Future research should focus on developing better design guidelines and exploring alternative reinforcement strategies to enhance the resilience of bridge structures in seismic zones.

VII. CONCLUSION

Linear time history analysis is a vital tool for assessing the seismic performance of reinforced concrete bridges in near-field ground motion scenarios. While significant progress has been made, ongoing research is essential to address existing challenges and enhance the safety and resilience of bridge infrastructure in earthquake-prone regions.

LTHA provides insights into how reinforced concrete bridges will perform during earthquakes, seismic response analysis of continuous reinforced concrete bridges subjected to near-fault ground motions reveals critical insights into their performance under extreme loading conditions. The findings underscore the importance of incorporating near-fault effects in design practices, as traditional methods may underestimate the seismic demands. This research contributes to the field of bridge engineering by providing a framework for evaluating and enhancing the resilience of critical infrastructure against seismic hazards. Future work should focus on developing design guidelines tailored to near-fault conditions, including retrofitting strategies for existing bridges, particularly in near-field scenarios, helping engineers design safer and more resilient structures.

The conclusion summarizes the key findings of the research, reinforcing the importance of integrating advanced seismic analysis in bridge design. Recommendations for future research and practical implications for engineers and policymakers in enhancing the seismic resilience of bridges are also discussed. This study underscores the importance of understanding the influence of lap splices on the seismic performance of RC bridge piers. Future research should focus on developing better design guidelines and exploring alternative reinforcement strategies to enhance the resilience of bridge structures in seismic zones.

The seismic response analysis of continuous reinforced concrete bridges subjected to near-fault ground motions reveals critical insights into their performance under extreme loading conditions. The findings underscore the importance of incorporating near-fault effects in design practices, as traditional methods may underestimate the seismic demands. This research contributes to the field of bridge engineering by providing a framework for evaluating and enhancing the resilience of critical infrastructure against seismic hazards. Future work should focus on developing design guidelines tailored to near-fault conditions, including retrofitting strategies for existing bridges.

The conclusion summarizes the key findings of the research, reinforcing the importance of integrating advanced seismic analysis in bridge design. Recommendations for future research and practical implications for engineers and policymakers in enhancing the seismic resilience of bridges are also discussed. The relationship between ground motion duration and the hysteretic behavior of reinforced concrete bridge columns is complex and critical for ensuring the safety and functionality of these structures during earthquakes. Ongoing research and advancements in modeling techniques are essential for improving our understanding and enhancing design practices.

VIII. FUTURE WORK

Hybrid Approaches

Combining linear and nonlinear analysis methods may provide a more comprehensive understanding of bridge performance under seismic loading.

Enhanced Ground Motion Prediction

Continued research into ground motion prediction models will help improve the reliability of LTHA.

Resilience-Based Design

The integration of resilience-based design principles into LTHA frameworks can enhance the performance of bridges and ensure their functionality post-earthquake

REFERENCES

1. H.S. Birajdar, P.R. Maiti, P.K. Singh, Failure of Chauras bridge, *Eng Fail Anal* 45 (2014) 339–346, <https://doi.org/10.1016/j.engfailanal.2014.06.015>.
2. G. Zerayohannes, E. Gebreyohannes, A. Zekaria-Abdullahi, Investigation of the cause of failure of the Omo River Bridge, *Structural Engineering International: Journal of the International Association for Bridge and Structural Engineering (IABSE)* 27 (3) (Aug. 2017) 418–421, <https://doi.org/10.2749/1686617X14881937384729>.
3. *Structural Concrete*, Wiley-Blackwell (Sep. 2015) 323–332, <https://doi.org/10.1002/suco.201500022>.
4. G. Brunell, Y.J. Kim, Effect of local damage on the behavior of a laboratory-scale steel truss bridge, *Eng Struct* 48 (Mar. 2013) 281–291, <https://doi.org/10.1016/j.engstruct.2012.09.017>.
5. U. Starossek, 'Progressive collapse of structures', 2006. doi: doi.org/10.1680/pcos.61682.fm.
6. S.A. Derseh, T.A. Mohammed, Bridge structures under progressive collapse: A comprehensive state-of-the-art-review, *Results in Engineering* 18 (Jun. 2023), 101090, <https://doi.org/10.1016/j.rineng.2023.101090>.
7. F. Kiakojour, M.R. Sheidaii, V. De Biagi, B. Chiaia, Progressive collapse of structures: A discussion on annotated nomenclature, *Structures* 29 (Feb. 2021) 1417–1423, <https://doi.org/10.1016/j.istruc.2020.12.006>.
8. T.D. Stark, et al., I-5 Skagit River Bridge Collapse Review, *J. Perform. Constr. Facil* (2016), [https://doi.org/10.1061/\(ASCE\)CF.1943](https://doi.org/10.1061/(ASCE)CF.1943).
9. C. Pearson and N. Delatte, 'Collapse of the Quebec Bridge, 1907', *Journal of performance of Constructed Facilities*, vol. 20, no. (1), pp. 84–91, 2006, [Online]. Available: https://engagedscholarship.csuohio.edu/encee_facpub.
10. M. Buitrago, E. Bertolesi, P.A. Caldero'n, J.M. Adam, Robustness of steel truss bridges: Laboratory testing of a full-scale 21-metre bridge span, *Structures* 29 (Feb.2021)691–700, <https://doi.org/10.1016/j.istruc.2020.12.005>.
11. G. Caredda, M.C. Porcu, M. Buitrago, E. Bertolesi, J.M. Adam, Analysing local failure scenarios to assess the robustness of steel truss-type bridges, *Eng Struct* 262(Jul.2022), <https://doi.org/10.1016/j.engstruct.2022.114341>.
12. B. Barros, B. Conde, M. Cabaleiro, B. Riveiro, Deterministic and probabilistic-based model updating of aging steel bridges, *Structures* 54 (Aug. 2023) 89–105, <https://doi.org/10.1016/j.istruc.2023.05.020>.
13. V. Sangiorgio, A. Nettis, G. Uva, F. Pellegrino, H. Varum, J.M. Adam, Analytical fault tree and diagnostic aids for the preservation of historical steel truss bridges, *Eng Fail Anal* 133 (Mar. 2022), <https://doi.org/10.1016/j.engfailanal.2021.105996>.
14. B. Barros, B. Conde, M. Cabaleiro, B. Riveiro, Design and testing of a decision tree algorithm for early failure detection in steel truss bridges, *Eng Struct* 289 (Aug.2023), <https://doi.org/10.1016/j.engstruct.2023.116243>.
15. O. Bouzas, B. Conde, M. Cabaleiro, B. Riveiro, A holistic methodology for the non-destructive experimental characterization and reliability-based structural assessment of historical steel bridges, *Eng Struct*270(Nov.2022), <https://doi.org/10.1016/j.engstruct.2022.114867>.
16. F. Parisi, A.M. Mangini, M.P. Fanti, J.M. Adam, Automated location of steel truss bridge damage using machine learning and raw strain sensor data, *Autom Constr*138(Jun.2022), <https://doi.org/10.1016/j.autcon.2022.104249>.
17. B. Imam, M. Chryssanthopoulos, A review of metallic bridge failure statistics, *IABMAS* (2010), <https://doi.org/10.1201/b10430-502>.
18. ISO 2394 General principles on reliability for structures',2013.[Online].Available: <http://standardsdevelopment.bsigroup.com>.
19. Chopra, A.K. (2017). *Dynamics of Structures: Theory and Applications to Earthquake Engineering*.



INTERNATIONAL
STANDARD
SERIAL
NUMBER
INDIA



INTERNATIONAL JOURNAL OF INNOVATIVE RESEARCH

IN SCIENCE | ENGINEERING | TECHNOLOGY

 9940 572 462  6381 907 438  ijirset@gmail.com



www.ijirset.com

Scan to save the contact details