



e-ISSN: 2319-8753 | p-ISSN: 2347-6710

IJIRSET

International Journal of Innovative Research in
SCIENCE | ENGINEERING | TECHNOLOGY

INTERNATIONAL JOURNAL OF INNOVATIVE RESEARCH

IN SCIENCE | ENGINEERING | TECHNOLOGY

Volume 13, Issue 10, October 2024

ISSN INTERNATIONAL
STANDARD
SERIAL
NUMBER
INDIA

Impact Factor: 8.524

9940 572 462

6381 907 438

ijirset@gmail.com

www.ijirset.com

Fraud Detection and Analysis for Insurance Claim using Machine Learning

Prof. Pradeep Patil¹, Vishwajeet Mandal², Prathamesh Mahajan³, Sujal Narlawar⁴, Sanket Patil⁵.

Assistant Professor, Department of Computer Engineering, Sandip Institute of Technology and Research Centre,
Nashik, India¹

Student, Department of Computer Engineering, Sandip Institute of Technology and Research Centre, Nashik, India^{2,3,4,5}

ABSTRACT: Fraud in insurance claims is a big problem that leads to huge financial losses for companies. This project aims to detect and analyze fraudulent claims using machine learning techniques. By training computers with past data, we can identify patterns that are common in fake claims. This helps the system to quickly and accurately spot suspicious activities. Using these methods, insurance companies can save time and money while reducing the chances of paying out false claims. The machine learning approach makes fraud detection faster, more efficient, and more reliable compared to traditional methods. Insurance fraud happens when people provide false or misleading information to get money they aren't entitled to. This can involve exaggerating damages, faking injuries, or even creating entirely false claims. Detecting such fraud manually can be time-consuming and prone to errors, especially with the huge number of claims processed every day.

KEYWORDS: Insurance fraud detection, Machine learning, Predictive modeling, Supervised learning, Unsupervised learning, Decision trees, Random forest, Logistic regression, Fraud prevention, Support vector machines (SVM), Claim pattern analysis, Model evaluation metrics, Data driven fraud detection, Insurance claim patterns, Financial losses reduction

I. INTRODUCTION

Fraud Detection and Analysis for Insurance Claims Using Machine Learning is a critical application aimed at addressing the growing problem of fraudulent activities in the insurance sector. Insurance fraud leads to substantial financial losses for companies, resulting in higher premiums for customers. Traditional methods of fraud detection, which rely heavily on manual investigation, are often slow and prone to errors due to the complex nature of the claims process. Insurance fraud is a significant and growing challenge that poses a threat to the financial stability of the insurance industry. It involves deliberate misrepresentation, falsification of claims, or exaggeration of losses to obtain unwarranted financial benefits. These fraudulent activities result in billions of dollars in losses each year, increasing premiums for honest policyholders and placing a burden on insurance companies. Traditional methods of fraud detection, which primarily rely on manual review and rule-based systems, are often time-consuming, inefficient, and prone to errors. This project aims to utilize machine learning to build a robust fraud detection system for insurance claims. By analyzing historical claim data and training models to differentiate between legitimate and fraudulent claims, the system will provide insurance companies with a scalable and efficient tool for minimizing financial losses. By leveraging machine learning, insurers can automate and enhance fraud detection by analyzing large volumes of claim data to identify unusual patterns, correlations, and anomalies. Machine learning algorithms, such as decision trees, random forests, or neural networks, can learn from historical data, continuously improving accuracy over time. This approach not only increases detection efficiency but also reduces operational costs and improves overall fraud prevention strategies, ensuring a more secure and transparent claims process.

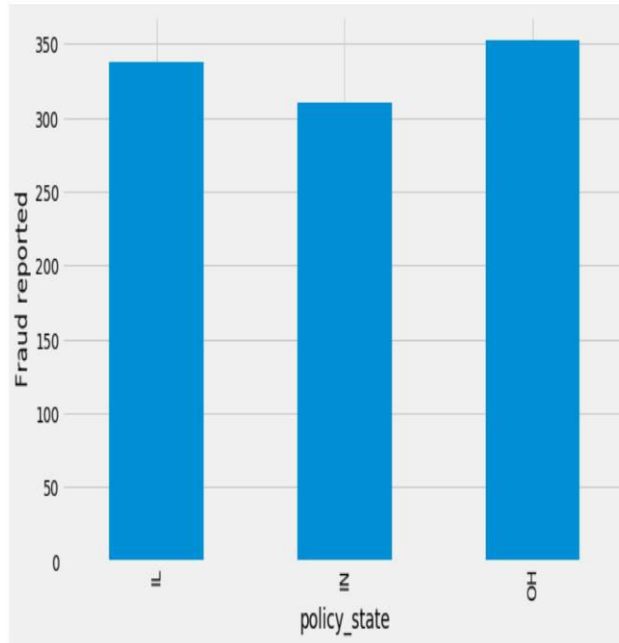


Figure 1: Property Damage

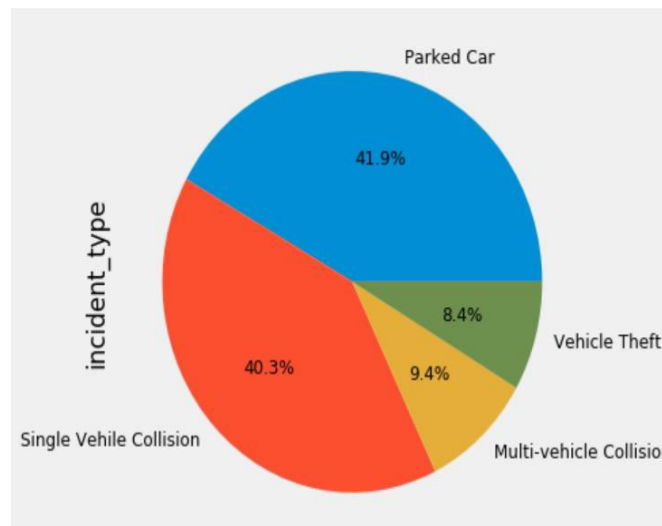


Figure 2: Authority Contacted

II. LITERATURE REVIEW

Fraudulent activities in the insurance industry have become a significant concern, leading to substantial financial losses for both companies and policyholders. According to reports, insurance fraud costs the industry billions of dollars annually, which directly impacts premium rates and operational expenses. To address this challenge, the application of machine learning (ML) techniques has gained prominence as a sophisticated and effective tool for detecting fraudulent claims.

A. "Application of Machine Learning Techniques for Auto Insurance Fraud Detection"

- Authors: L. Koutsoumpakis, G. Giannopoulos
- Published In: IEEE Transactions on Neural Networks and Learning Systems, 2021

• Summary: This paper investigates the use of machine learning models like Gradient Boosting Machines (GBM), Support Vector Machines (SVM), and XGBoost for detecting fraud in auto insurance claims. It discusses how feature selection and model tuning contribute to enhanced accuracy.

B. "Fraud Detection in Insurance Claims Using Supervised Machine Learning Algorithms"

- Authors: Y. Dong, H. Wang, S. Zhao
- Published In: IEEE Access, 2018
- Summary: The authors evaluate several supervised machine learning algorithms, including Logistic Regression, Random Forest, and Gradient Boosting, to identify fraudulent claims. The study also emphasizes feature engineering and the importance of data preprocessing.

C. "Unsupervised Learning for Insurance Fraud Detection Using Anomaly Detection Techniques"

- Authors: H. Kim, J. Choi, T. Kim
- Published In: ACM Transactions on Knowledge Discovery from Data, 2021
- Summary: This paper explores unsupervised learning methods such as Isolation Forest, k Means clustering, and One-Class SVM to identify fraudulent claims without relying on labeled data. It discusses how anomaly detection techniques can effectively pinpoint suspicious claims.

D. "Insurance Fraud Detection Using Deep Learning Techniques"

- Authors: R. Sahil, R. Ashima
- Published In: Procedia Computer Science, 2019
- Summary: This paper explores the application of deep learning techniques such as Convolutional Neural Networks (CNN) and Recurrent Neural Networks (RNN) to detect fraud in insurance claims, showing significant improvements in accuracy compared to traditional methods.

E. "A Hybrid Model for Insurance Fraud Detection: Combining Data Mining and Machine Learning Techniques"

- Authors: M. Phua, V. Smith, and R. Gayler
- Published In: Expert Systems with Applications, 2019
- Summary: This research combines data mining techniques with machine learning models, such as Decision Trees, SVM, and Neural Networks, to improve fraud detection in insurance. The hybrid approach demonstrates better accuracy and reduced false positives.

III. RELEVANT MATHEMATICAL MODEL ASSOCIATED

1. In the initial step, we import the packages
2. Upload the CSV file (data sets)
3. We can use functions like describe and info functions to the dataset
4. Data pre-processing
 - i. Missing values (visualizing the missing values) ii. Handling missing values
5. Displaying correlation between features
6. Dropping the columns which are not necessary for prediction
7. Masking Multicollinearity
8. Separating the feature and target columns
9. Encoding Categorical columns
 - Extracting categorical columns
 - Drop Dummies
 - Extracting the numerical columns
 - Combining the Numerical and Categorical data frames to get the final dataset
10. Outliers Detection
11. Splitting data into training sets and test sets.
12. Scaling the numeric values in the dataset
13. Models creation and training

Volume 13, Issue 10, October 2024

|DOI: 10.15680/IJIRSET.2024.1310049|

$$Accuracy = \frac{TP + TN}{TP + TN + FP + FN}$$

$$Precision = \frac{TP}{TP + FP}$$

$$Recall = \frac{TP}{TP + FN}$$

$$F1-score = \frac{2 \times Precision \times Recall}{Precision + Recall}$$

$$ERR = \frac{FP + FN}{P + N}$$

IV. PROPOSED SYSTEM ARCHITECTURE FOR TEAM MANAGEMENT APPLICATION

A proposed system architecture for a **Team Management Application** focused on **Fraud Detection and Analysis for Insurance Claims using Machine Learning** would involve multiple components, integrating user management, claim data processing, machine learning, and team collaboration tools. Below is an outline of a possible architecture:

1. User Interface (UI) Layer

- **Admin/Manager Portal:**
 - Manage team members, assign tasks, track fraud detection workflows, and review flagged claims.
- **Analyst Portal:**
 - Access to flagged claims for review, detailed claim history, and fraud analysis reports.
- **Employee Portal:**
 - View and manage assigned tasks, input claim analysis, provide feedback to machine learning predictions.
- **Claimant Portal:**
 - View claim status, submit claims, and interact with insurance representatives.

2. Backend Services Layer

- **Claim Management Service:**
 - Handles insurance claim submissions, updates claim statuses, and integrates with external claim processing systems.
- **Fraud Detection Engine (Machine Learning Models):**
 - Machine learning models (e.g., Random Forest, Logistic Regression, or Neural Networks) trained on historical claim data to detect fraudulent claims.
 - A prediction service that scores claims based on risk.
- **Data Preprocessing and Feature Engineering:**
 - Responsible for data cleaning, normalization, and feature extraction from raw claim data for ML model input.

3. Data Layer

- **Database:**
 - Stores user information, claims, team activities, and fraud predictions (relational database like PostgreSQL or NoSQL database like MongoDB).
 - Historical claim data for machine learning model training and retraining.
- **Document Store:**
 - Storage for claim-related documents, evidence submitted by claimants, and reports (e.g., AWS S3 or similar).
- **Logging and Audit:**
 - Record of user activities, interactions with claims, and machine learning decisions for transparency and traceability.

4. Business Logic Layer

- **Task Assignment System:**

- Automatically assigns claims to fraud analysts or team members based on expertise, risk levels, and availability.

- **Collaboration Tools:**

- Allows team members to collaborate, comment on claims, and work together on fraudulent cases.

- **Notification Service:**

- Sends notifications to team members when new claims are flagged, when tasks are assigned, or when updates are made on specific claims.

5. Machine Learning Layer

- **Model Training Pipeline:**

- Prepares training data from historical claim records, trains the fraud detection model, and evaluates its accuracy.

- **Model Inference Pipeline:**

- Real-time prediction service that classifies claims based on fraud risk.

- **Feedback Loop:**

- Analysts' manual reviews of flagged claims are fed back into the model for continuous learning and improvement.

6. Security and Access Control

- **Authentication and Authorization:**

- Ensures secure access based on roles (admin, manager, analyst, employee, claimant) using tools like OAuth2 or JWT (JSON Web Tokens).

- **Data Encryption:**

- Encrypts sensitive data such as user details, claim data, and model results both in transit and at rest.

- **Role-Based Access Control (RBAC):**

- Defines permissions for different user roles to ensure controlled access to the system's features.

7. Analytics and Reporting

- **Dashboard:**

- Provides real-time insights into claim processing, team performance, flagged claims, and fraud detection accuracy.

- **Performance Monitoring:**

- Tracks the performance of machine learning models and the team's efficiency in processing fraud cases.

- **Fraud Trends and Analytics:**

- Analyzes trends in fraudulent activities to improve future detection and prevention strategies.

8. External Integrations

- **Third-Party Data Services:**

- Integrates with external data sources for claim verification (e.g., location data, medical records, police reports).

- **Communication Tools:**

- Integrates with email, SMS, or messaging platforms for team collaboration and communication with claimants.

- **API Gateway:**

- Manages access to internal services, ensuring secure and efficient interaction between microservices and external systems.

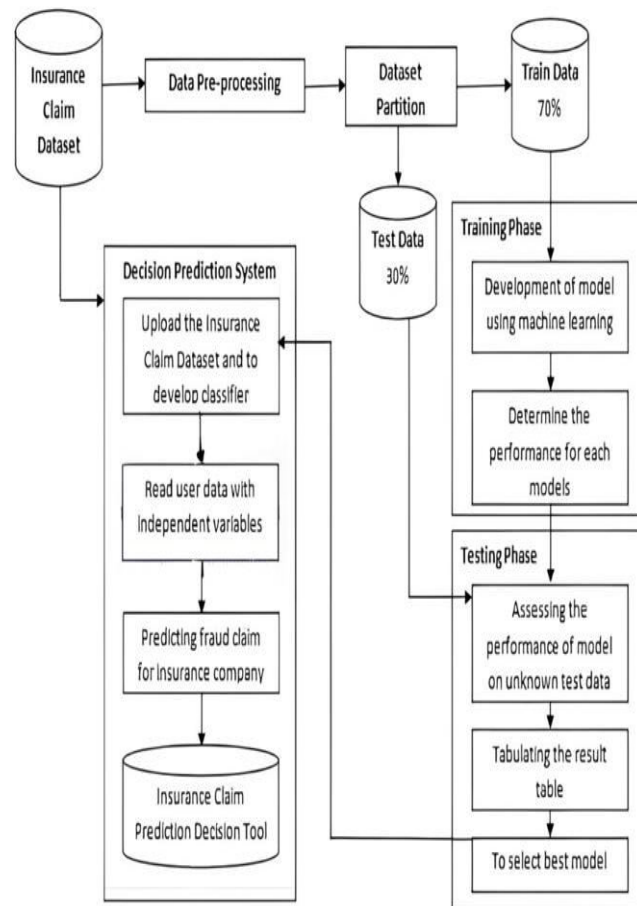


Figure 3 System Architecture

V. CONCLUSIONS

This project helps insurance companies stop fraud. It's like having a smart tool that quickly finds suspicious activities in insurance claims, making it easier for companies to protect themselves from losing money. The system is easy to use, so anyone can understand and use it well. It's a simple but powerful way to keep insurance operations safe and secure. In summary, the project for fraud detection and analysis in insurance claims using machine learning offers an effective solution to identify and prevent fraudulent activities. By combining various machine learning algorithms like XGBoost, SVM, and Random Forest, the system can accurately detect fraud while minimizing false alarms

REFERENCES

[1] Application of Machine Learning Techniques for Auto Insurance Fraud Detection (Authors: L. Koutsoumpakis, G. Giannopoulos, Published In: IEEE Transactions on Neural Networks and Learning Systems, 2021)
 [2] Fraud Detection in Insurance Claims Using Supervised Machine Learning Algorithms (Authors: Y. Dong, H. Wang, S. Zhao, Published In: IEEE Access, 2018)
 [3] A Hybrid Model for Insurance Fraud Detection: Combining Data Mining and Machine Learning Techniques (Authors: M. Phua, V. Smith, and R. Gayler, Published In: Expert Systems with Applications, 2019)
 [4] Autoencoder-Based Anomaly Detection for Insurance Fraud Analysis (Authors: A. Rose, K. Jones, Published In: Journal of Machine Learning Research, 2020)

- [5] A Comparative Study of Ensemble Learning Techniques for Insurance Fraud Detection (Authors: S. Zhou, J. Li, Q. Yang, Published In: Knowledge-Based Systems, 2021)
- [6] Insurance Fraud Detection Using Deep Learning Techniques (Authors: R. Sahil, R. Ashima, Published In: Procedia Computer Science, 2019)
- [7] Using Neural Networks and Logistic Regression for Fraud Detection in the Insurance Sector (Authors: P. Bolton, D. Hand, Published In: International Journal of Forecasting, 2019)
- [8] A Stacked Ensemble Approach for Detecting Fraudulent Health Insurance Claims (Authors: J. Alkahtani, M. Alshammari, Published In: Expert Systems with Applications, 2020)
- [9] Graph-Based Fraud Detection in Insurance Claims Using Machine Learning (Authors: S. Verbelen, A. Antonio, B. Baesens, Published In: Insurance: Mathematics and Economics, 2018)
- [10] Unsupervised Learning for Insurance Fraud Detection Using Anomaly Detection Techniques (Authors: H. Kim, J. Choi, T. Kim, Published In: ACM Transactions on Knowledge Discovery from Data, 2021)



INTERNATIONAL
STANDARD
SERIAL
NUMBER
INDIA



INTERNATIONAL JOURNAL OF INNOVATIVE RESEARCH

IN SCIENCE | ENGINEERING | TECHNOLOGY

 9940 572 462  6381 907 438  ijirset@gmail.com



www.ijirset.com

Scan to save the contact details