



e-ISSN: 2319-8753 | p-ISSN: 2347-6710

IJRSET

International Journal of Innovative Research in
SCIENCE | ENGINEERING | TECHNOLOGY



INTERNATIONAL JOURNAL OF INNOVATIVE RESEARCH

IN SCIENCE | ENGINEERING | TECHNOLOGY

Volume 13, Issue 9, September 2024

ISSN INTERNATIONAL
STANDARD
SERIAL
NUMBER
INDIA

Impact Factor: 8.524

9940 572 462

6381 907 438

ijirset@gmail.com

www.ijirset.com

Drowsiness Detection System

Ashutosh Mishra¹, Samresh Pimprikar², Dipak Patil³, Mr.D.A.Itole⁴

Department of Electronics & Telecommunications, AISSMS Institute of Information Technology, Pune,
Maharashtra, India^{1 2 3}

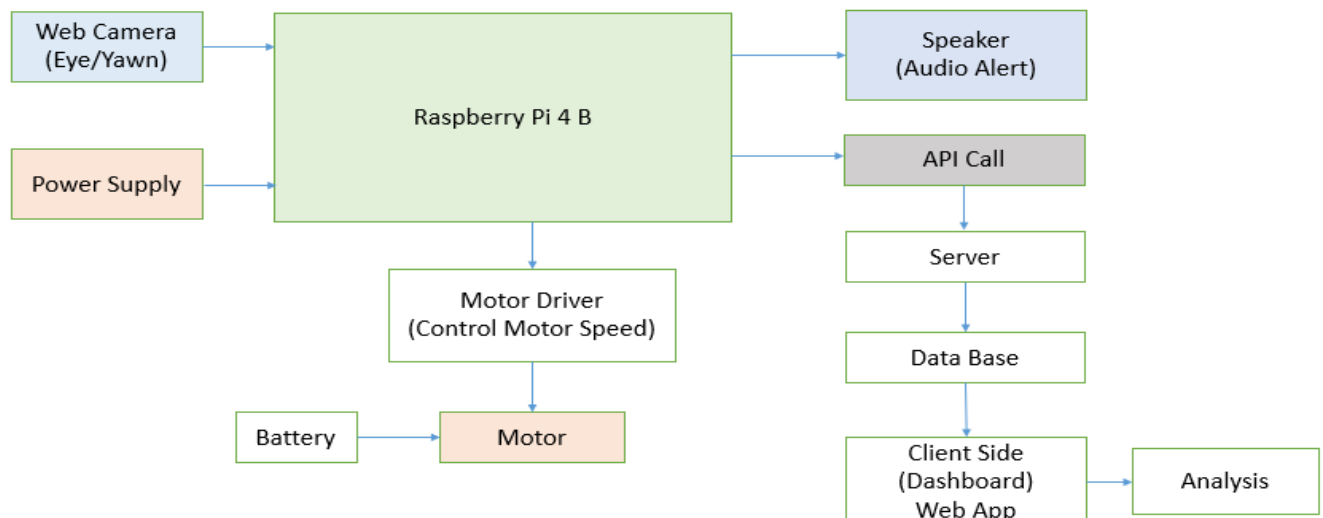
Assistant Professor, Department of Electronics & Telecommunications, AISSMS Institute of Information Technology,
Pune, Maharashtra, India⁴

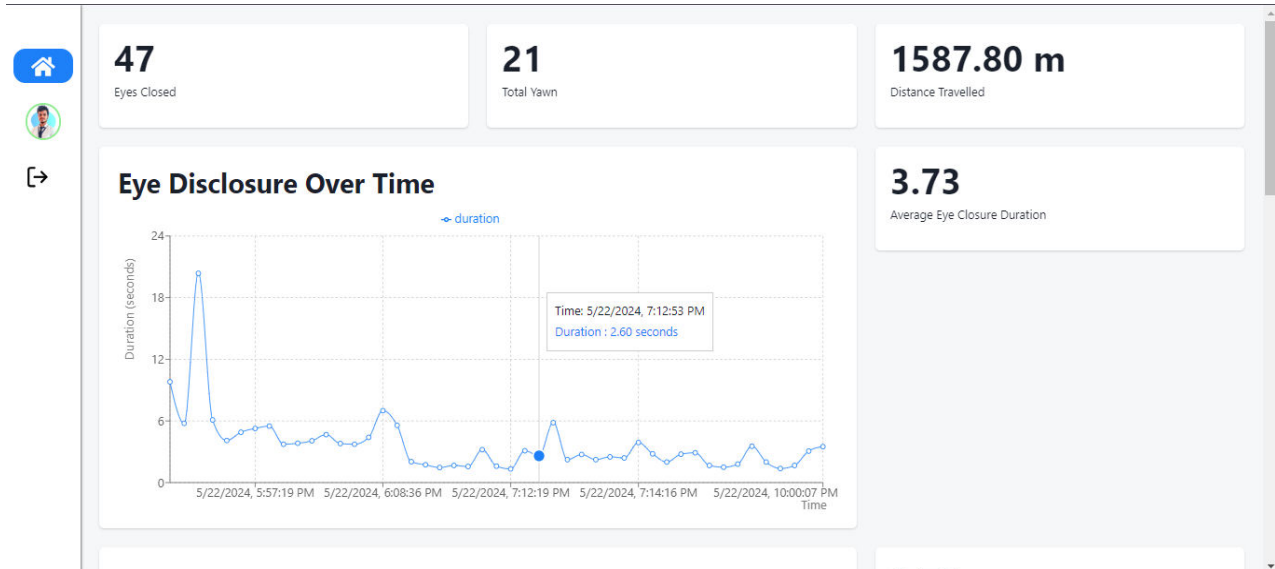
ABSTRACT: Drowsy driving is a major cause of accidents, leading to many injuries and deaths each year. To tackle this problem, drowsiness detection systems have been developed. These systems monitor how awake a driver is and give alerts if they detect signs of drowsiness. This paper looks at the different technologies used in these systems, like tracking physical signs (e.g., eye movements), analyzing driving behavior, and using advanced computer algorithms. We also discuss what works well, what doesn't, and how these systems can be improved in the future.

I. INTRODUCTION

Traffic accidents are a major cause of death and injury around the world. The World Health Organization reports that about one million people die each year because of traffic-related injuries. One of the big reasons for these accidents is drivers falling asleep at the wheel because they haven't had enough sleep or rest, or they are simply too tired. This is dangerous not only for the driver but also for everyone else on the road. Studies show that many serious road accidents happen because drivers are drowsy. Fatigue is a major reason why drivers get sleepy. Drowsiness while driving has become a key factor in the rising number of road accidents, making it an urgent issue that needs to be solved. The main aim of drowsiness detection devices is to spot drowsiness in real-time to prevent accidents. Many devices have been developed that use artificial intelligence to detect when a driver is getting sleepy. Our research focuses on a system that detects when a driver is becoming drowsy by looking at their face and tracking their eye movements. The system takes a picture of the driver's eyes and compares it to a database. If it notices the eyes are closed for too long, it sounds an alarm to wake up the driver. If the driver's eyes open after the alarm, the system keeps monitoring them; if the eyes stay closed, the alert score goes up. This helps make sure the driver stays awake.

This paper aims to solve the problem of detecting drowsiness with an accuracy of 80%, which helps reduce road accidents. By using these systems, we can make driving safer and prevent the many deaths and injuries caused by drowsy driving.





II. LITERATURE REVIEW & CURRENT TECHNIQUES

A. Literature Survey

The paper "Driver Drowsiness Detection Based on Convolutional Neural Network Architecture Optimization Using Genetic Algorithm" by Yashar Jebrailey, Yousef Sharafi, and Mohammad Teshnehlab presents a method to detect driver drowsiness using an optimized convolutional neural network (CNN) architecture. The optimization is achieved through a genetic algorithm, which determines the best network structure, including the number of layers and type of objective function. A new dataset with frames labeled as either drowsy or natural was created to address shortcomings in existing datasets. Additionally, transfer learning was employed, using the optimized network as a feature extractor and training its fully connected layer on the drowsy dataset. This approach achieved an accuracy of approximately 99.8%, outperforming other methods. The study underscores the importance of addressing driver fatigue to enhance road safety using advanced AI and sensor technologies.[1]

The proposed system uses a 5-megapixel camera to capture facial images at 15 frames per second. The detection process involves identifying facial landmarks, focusing on the eyes and mouth, to determine the driver's alertness. The system performs well under different lighting conditions, with varying accuracy:

Daylight Normal Condition: 85-95% accuracy

Daylight Dim Condition: 75-80% accuracy

Bright Light (Night): 90-93% accuracy

Dim Light (Night): 65-68% accuracy

Yawning detection proved more effective than eye movement detection across all scenarios.

The study concludes that the proposed hybrid machine learning system effectively detects driver drowsiness, especially under optimal lighting conditions. Continuous monitoring of facial expressions and the use of SVM for emotion detection provide reliable results. The system's integration with vehicle electronics enhances its practical application in real-world scenarios.[2]

This innovative approach uses Generative Adversarial Networks (GANs) to create synthetic images that improve the representation of underrepresented ethnic groups in driver drowsiness detection datasets. By integrating these synthetic images, the GANs help reduce bias and enhance detection accuracy across a more diverse population. The results showed that incorporating GAN-generated synthetic images led to increased detection accuracy for diverse populations, demonstrating the method's effectiveness in reducing bias and improving the model's generalizability. The framework consists of several key components: GANs for generating synthetic images, Convolutional Neural Networks (CNNs) for detecting driver drowsiness, population bias visualization techniques to understand the distribution of ethnicities in

the datasets, and image re-sampling to achieve a more balanced representation. The training process utilized the Adam optimizer for its efficiency and effectiveness, dynamic learning rate adjustment to ensure optimal training, and an early stopping strategy to prevent overfitting.[3]

The study focuses on analyzing respiratory signals to detect drowsiness, optimizing algorithms, and validating the results under driving conditions. The characterization of subject respiration rate variability involves an algorithm that finds a reference pattern for the subject's state, which is then used to estimate breath cycle duration. The respiratory signal is analyzed in 40-second intervals. The TEDD algorithm's parameters were optimized for drowsiness detection, with validation conducted under a driving simulator, showing improved results. A nested cross-validation method was employed for performance evaluation.[4]

The proposed fatigue detection method is based on eye status, utilizing pupil and iris segmentation. The network design includes a segmentation network and a decision network. This approach achieved a precision of 96.72% in fatigue detection. The method was trained and tested using the 'EYE DATA' dataset and outperformed state-of-the-art methods in eye openness estimation and fatigue detection. It was successfully tested in real driving environments, demonstrating its practical applicability.[5]

III. PROPOSED METHODOLOGY

Developing a drowsiness detection system involves several steps. First, we collect data from different sources, like signals from the body and behavior, as well as information from the vehicle itself. Then, we clean up and organize this data to make it useful. Next, we figure out what parts of the data are important for detecting drowsiness. After that, we use this information to train computer models to recognize when a driver is getting sleepy. We test these models to see how well they work and make sure they're accurate. Once we have a good model, we put it into a system that can be used in real-time while driving. We check that the system works well in different situations, like on highways or in cities, and that drivers find it easy to use. Finally, we keep improving and updating the system to make sure it stays effective and helpful for drivers.

Once the face is detected, the system pinpoints key facial landmarks, such as the eyes, nose, and mouth, using tools like Dlib's 68-point shape predictor or other deep learning models. These landmarks help in extracting features related to drowsiness, such as eye closure or yawning. CNNs play a crucial role here by automatically learning and extracting these relevant features from facial images.

In the detection phase, the system uses metrics like the Eye Aspect Ratio (EAR) to measure eye closure and the Mouth Aspect Ratio (MAR) to detect yawning. A low EAR typically indicates closed eyes, signaling drowsiness. Alternatively, end-to-end CNN models can be trained to directly classify drowsiness levels from facial images or video frames.

Training these CNN models involves collecting a large dataset of labeled facial images or videos that indicate various states of drowsiness. The chosen CNN architecture is then trained on this dataset to learn patterns and features associated with being alert or drowsy. Once trained, the model can process live video feeds in real-time, outputting predictions about the user's drowsiness. If drowsiness is detected, the system can trigger alerts to notify the user.

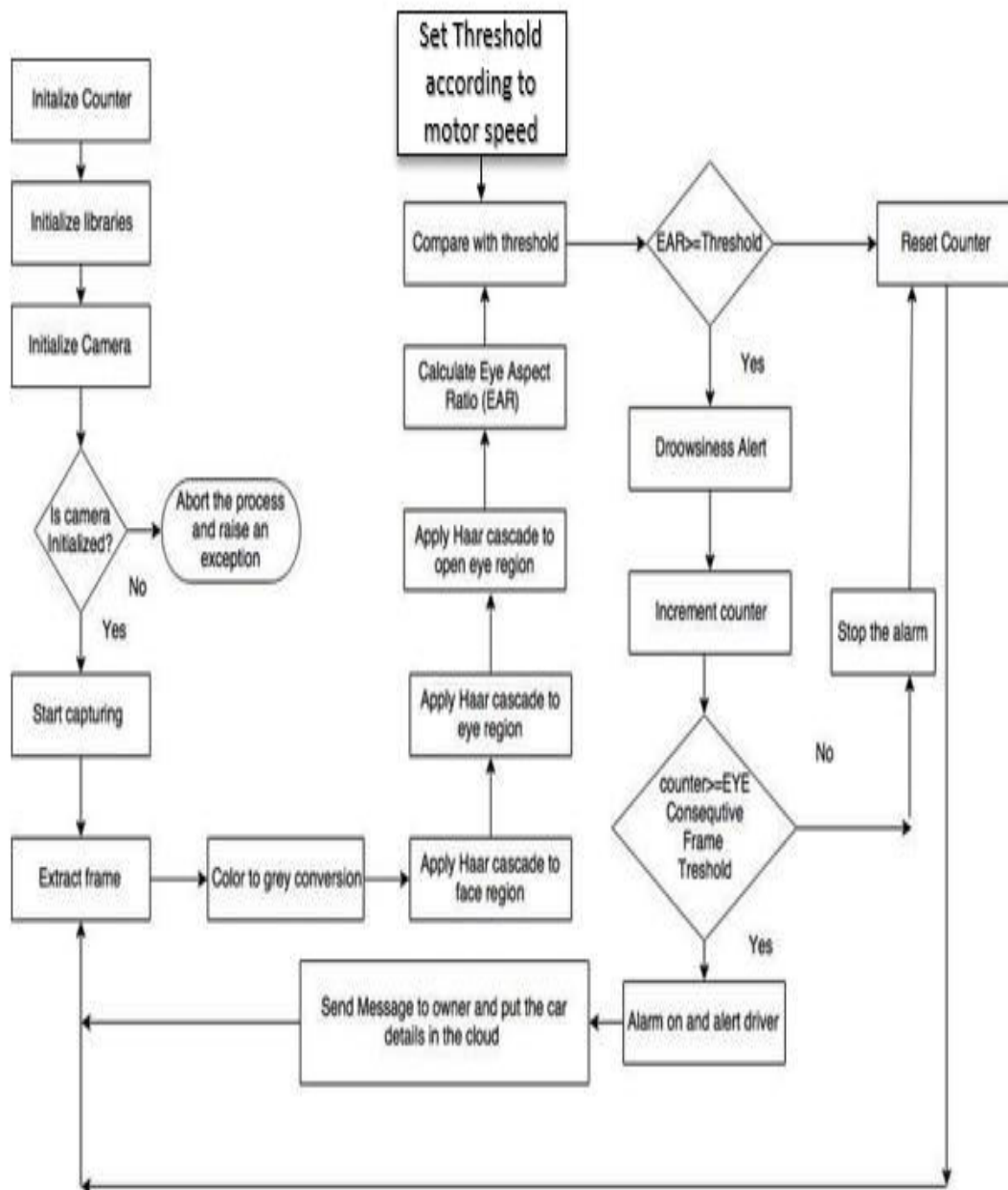
IV. IMPLEMENTATION

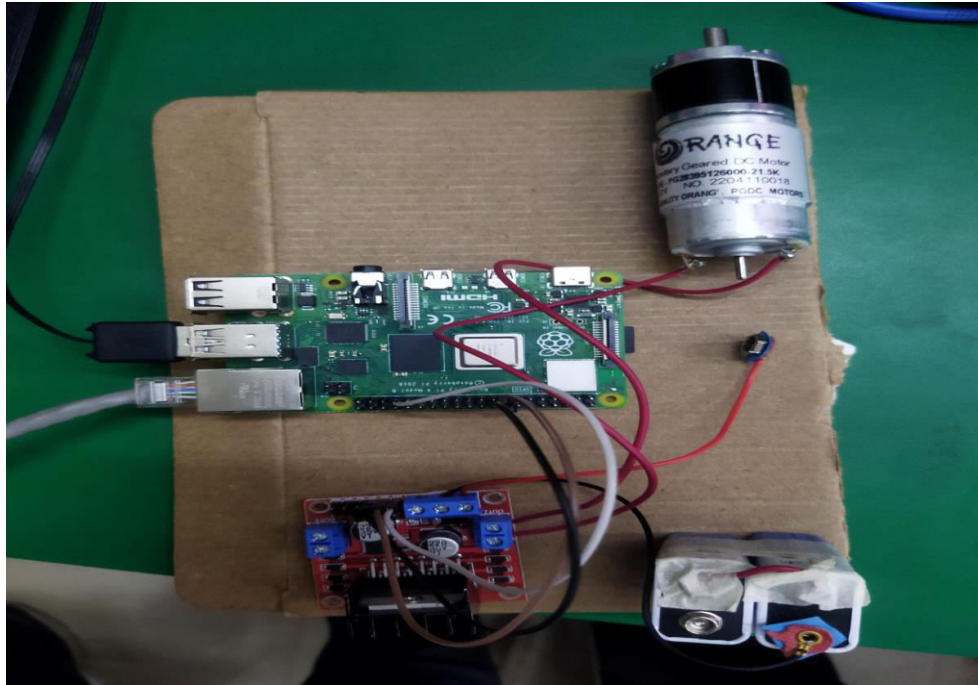
Implementing a drowsiness detection project involves several key steps. First, define the scope of your project, deciding whether it will be real-time or post-processed, and the specific context, such as for vehicles or workplaces. Gather and prepare data by using existing datasets or collecting your own, recording videos of subjects in different states of alertness. Preprocess this data by detecting faces and facial landmarks, and calculating metrics like the Eye Aspect Ratio (EAR) and Mouth Aspect Ratio (MAR) to detect closed eyes and yawning.

Next, train a machine learning model. You can use classical machine learning techniques, extracting features like EAR and MAR, and training classifiers such as SVM or Random Forest. Alternatively, you can use deep learning, employing convolutional neural networks (CNNs) to classify eye states and combining them with recurrent neural networks (RNNs) to handle temporal dependencies. Integrate the trained model into a real-time system that includes a camera for

capturing video, a preprocessing pipeline for face and landmark detection, and model inference to predict drowsiness and trigger alerts.

Implement real-time monitoring using software tools like OpenCV for video processing and Dlib or Mediapipe for facial landmark detection. Create a system that captures video frames, detects faces, extracts facial landmarks, calculates EAR and MAR, uses the trained model to predict drowsiness, and triggers alerts if drowsiness is detected. Test and validate the system in different environments to ensure accuracy and reliability, evaluating performance metrics like accuracy, precision, recall, and F1-score. Finally, deploy the system in the target environment, such as vehicles or workplaces, monitor its performance, and update the model based on feedback and new data to maintain its effectiveness.





V. CONCLUSION

In conclusion, the future of driver drowsiness detection systems is promising, driven by advancements in technology and its potential to significantly enhance safety across various domains. Continuous improvements in machine learning, computer vision, and sensor technology will enhance the accuracy and reliability of these systems. They can be seamlessly integrated into vehicles to provide real-time alerts and interventions, effectively preventing accidents caused by drowsy driving. Beyond vehicles, drowsiness detection systems have potential applications in healthcare, aiding in patient monitoring and alerting caregivers in case of drowsiness or fatigue-related conditions. Future developments could see these systems integrated into wearable devices, making them more accessible and convenient for various users. By reducing the risk of accidents, especially in transportation, these systems have the potential to save lives and reduce healthcare costs globally. However, their deployment will require careful consideration of regulatory frameworks and ethical guidelines to ensure user privacy and system reliability. Ongoing research and development will drive innovation, improving the effectiveness and affordability of these systems over time. In essence, the future of drowsiness detection systems is bright, with widespread applications across industries and a significant potential to improve safety and well-being worldwide.

ACKNOWLEDGMENTS

We want to express our deep gratitude to AISSMS Institute of Information Technology Pune for providing us with a supportive learning environment that helped us think creatively and achieve our goals. The institute has been instrumental in building our confidence and enabling us to turn our project into reality. We are thankful for their continuous support and encouragement throughout our research journey.

We also want to thank Mr. D.A.ITOLE for his help in reviewing our paper and offering valuable suggestions that contributed to its successful completion.

REFERENCES

1. J. H. Yang, Z. Mao, L. Tijerina, T. Pilutti, J. F. Coughlin and E. Feron, "Detection of Driver Fatigue Caused by Sleep Deprivation," in IEEE Transactions on Systems, Man, and Cybernetics - Part A: Systems and Humans, vol. 39, no. 4, pp. 694-705, July 2009, doi: 10.1109/TSMCA.2009.2018634.
2. A Chellappa, M S Reddy, R Ezhilarasie, S Kanimozhi Suguna, A Umamakeswari "Fatigue detection using Raspberry Pi 3" International Journal of Engineering and Technology(UAE), volume 7, issue 2, pp. 29 – 32.

3. C.-T. Lin et al., "A real-time wireless brain-computer interface system for drowsiness detection," IEEE Trans. Biomed. Circuits Syst., vol. 4, no. 4, pp. 214–222, Aug. 2010.
4. Sukrith Mehta et al., "Real-Time Driver Drowsiness Detection System Using Eye Aspect Ratio and Eye Closure Ratio".
5. W. Deng and R. Wu, "Real-Time Driver-Drowsiness Detection System Using Facial Features," in IEEE Access, vol. 7, pp.118727-118738, 2019, doi: 10.1109/ACCESS.2019.2936663.
6. O. Khunpisuth, T. Chotchinasri, V. Koschakosai and N. Hnoohom, "Driver Drowsiness Detection Using Eye-Closeness Detection," 2016 12th International Conference on SignalImage Technology & Internet-Based Systems (SITIS), Naples, 2016, pp. 661-668, doi: 10.1109/SITIS.2016.110.
7. F. You, X. Li, Y. Gong, H. Wang and H. Li, "A Real-time Driving Drowsiness Detection Algorithm With Individual Differences Consideration," in IEEE Access, vol. 7, pp. 179396- 179408, 2019, doi: 10.1109/ACCESS.2019.2958667.
8. F. Guede-Fernández, M. Fernández-Chimeno, J. Ramos-Castro and M. A. García- González, "Driver Drowsiness Detection Based on Respiratory Signal Analysis," in IEEE Access, vol. 7, pp. 81826-81838, 2019, doi: 10.1109/ACCESS.2019.2924481.
9. M. A. Tanveer, M. J. Khan, M. J. Qureshi, N. Naseer and K. Hong, "Enhanced Drowsiness Detection Using Deep Learning: An fNIRS Study," in IEEE Access, vol. 7, pp. 137920- 137929, 2019, doi:



INTERNATIONAL
STANDARD
SERIAL
NUMBER
INDIA



INTERNATIONAL JOURNAL OF INNOVATIVE RESEARCH

IN SCIENCE | ENGINEERING | TECHNOLOGY

 9940 572 462  6381 907 438  ijirset@gmail.com



www.ijirset.com

Scan to save the contact details