



e-ISSN: 2319-8753 | p-ISSN: 2347-6710

IJRSET

International Journal of Innovative Research in
SCIENCE | ENGINEERING | TECHNOLOGY



INTERNATIONAL JOURNAL OF INNOVATIVE RESEARCH

IN SCIENCE | ENGINEERING | TECHNOLOGY

Volume 13, Issue 9, September 2024

ISSN INTERNATIONAL
STANDARD
SERIAL
NUMBER
INDIA

Impact Factor: 8.524

9940 572 462

6381 907 438

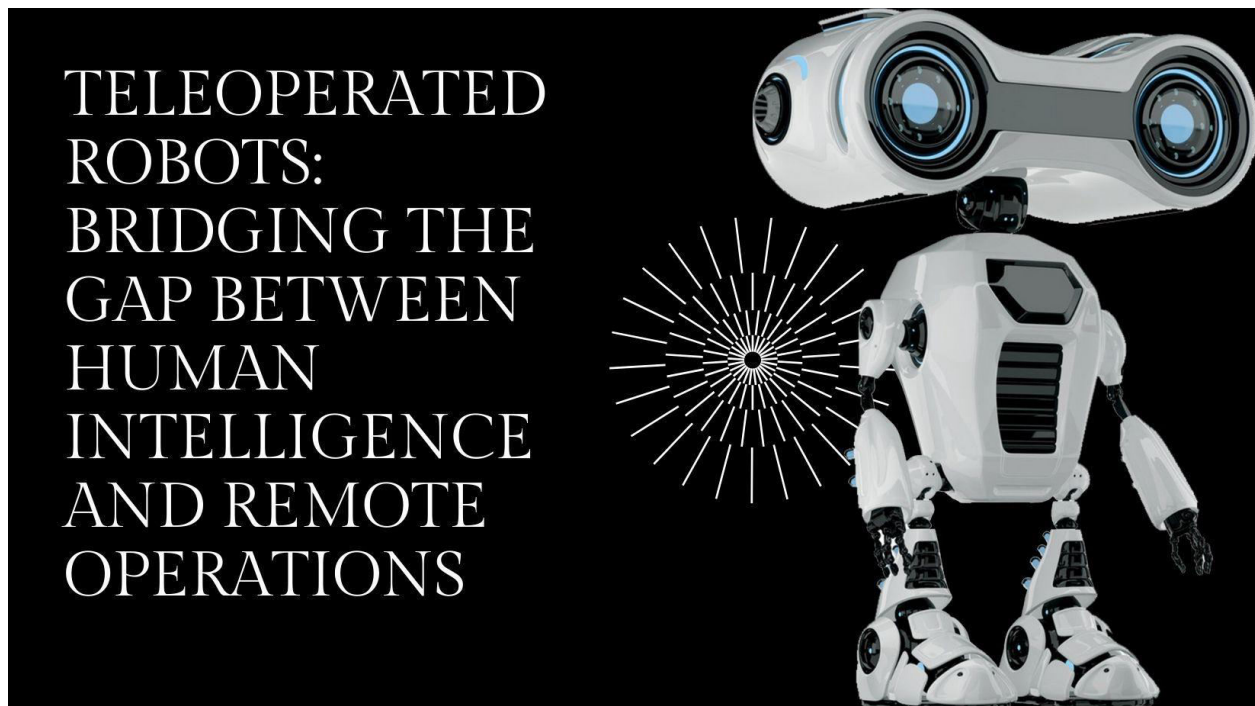
ijirset@gmail.com

www.ijirset.com

Teleoperated Robots: Bridging the Gap between Human Intelligence and Remote Operations

Mahesh Jain

Indira Gandhi National Open University, India



ABSTRACT: Teleoperated robots represent a significant advancement in robotics technology, enabling human operators to control machines remotely in hazardous, inaccessible, or distant environments. This comprehensive overview explores the key components, emerging technologies, diverse applications, and prospects of teleoperated robots. The article delves into the intricate workings of these systems, including robot hardware, control stations, communication links, and user interfaces. It examines how cutting-edge technologies like haptics and metaverse integration are enhancing teleoperation capabilities. The wide-ranging applications of teleoperated robots are discussed across various sectors, including military and defense, hazardous environments, healthcare, and space exploration. The potential impact of teleoperation on the future of work is analyzed, highlighting advantages such as increased safety, access to global talent, reduced travel, and 24/7 operations. Finally, the article addresses current challenges in the field, such as latency and bandwidth issues, and outlines exciting future developments that promise to revolutionize remote operations and human-robot interaction.

KEYWORDS: Teleoperation, Robotics, Remote Control, Haptic Feedback, Human-Robot Interaction

I. INTRODUCTION

Teleoperated robots, also known as telepresence or telemanipulation robots, represent a significant advancement in robotics technology. These sophisticated machines are designed to be controlled by human operators from a distance, allowing for the execution of tasks in environments that may be remote, hazardous, or otherwise inaccessible to humans. By combining the physical capabilities of robots with human decision-making and dexterity, teleoperated robots offer unique solutions to complex challenges across various industries [1].

The concept of teleoperation in robotics has evolved significantly since its inception. Early applications focused on handling radioactive materials in nuclear facilities, but the field has since expanded to encompass a wide range of industries and use cases. This growth has been fueled by advancements in communication technologies, sensor systems, and human-robot interfaces [2].

A typical teleoperated robot system consists of several key components:

1. **Robot Hardware:** The physical robot platform, equipped with actuators, sensors, and end-effectors tailored to specific tasks.
2. **Control Station:** A remote interface where the human operator interacts with the robot's systems.
3. **Communication Link:** A robust, often encrypted, data connection between the robot and the control station.
4. **User Interface:** Sophisticated software and hardware systems that translate operator inputs into robot actions and provide sensory feedback.

These robots find applications in diverse fields, including:

- **Disaster Response:** Enabling search and rescue operations in areas too dangerous for human entry.
- **Healthcare:** Facilitating remote surgeries and patient care in isolated regions.
- **Space Exploration:** Allowing human control of rovers and manipulators on distant planets and moons.
- **Deep-sea Operations:** Supporting underwater exploration and maintenance of offshore structures.
- **Military and Defense:** Conducting reconnaissance and handling explosive ordnance disposal.

Teleoperated robots offer numerous advantages. They protect human lives by allowing operators to remain at a safe distance from hazardous environments. They also extend human reach, enabling work in environments that would be otherwise inaccessible, such as deep space or the ocean floor. Moreover, teleoperated robots can leverage the cognitive abilities and decision-making skills of human operators while benefiting from the precision, strength, and endurance of robotic systems [1].

Despite these advantages, the field of telerobotics faces several challenges. Latency in communication, especially over long distances, can affect the operator's ability to control the robot effectively. The fidelity of sensory feedback, particularly in haptic systems, remains an area of ongoing research and development. Additionally, questions of reliability, power management, and autonomy in case of communication failure are critical considerations in the design and deployment of teleoperated systems [2].

As technology continues to advance, the future of teleoperated robots looks promising. Innovations in virtual and augmented reality are enhancing operator immersion and control. The integration of artificial intelligence is leading to more intuitive interfaces and improved autonomous capabilities. These developments are not only expanding the potential applications of teleoperated robots but are also blurring the lines between physical and virtual presence, potentially revolutionizing how we approach work, exploration, and interaction in remote or hazardous environments.

II. HOW TELEOPERATED ROBOTS WORK

Teleoperated robots represent a fascinating intersection of robotics, telecommunications, and human-computer interaction. These sophisticated systems enable human operators to control robotic devices from a distance, effectively extending human capabilities into environments that may be remote, hazardous, or otherwise inaccessible. The functionality of teleoperated robots relies on a seamless integration of several key components, each playing a crucial role in the overall system [3].

Key Components of Teleoperated Robot Systems

1. Robot Hardware

The physical robot is the cornerstone of any teleoperation system. It typically consists of:

- **Actuators:** These are the 'muscles' of the robot, converting electrical or hydraulic energy into mechanical motion. They can range from simple motors to complex hydraulic systems, depending on the robot's intended use.
- **Sensors:** A variety of sensors provide the robot with 'awareness' of its environment. These may include:
 - Proprioceptive sensors (e.g., encoders, accelerometers) for monitoring the robot's internal state
 - Exteroceptive sensors (e.g., cameras, LIDAR, force sensors) for gathering information about the external environment

- End-effectors: These are the 'hands' of the robot, designed for specific tasks such as grasping, cutting, or welding.
- Onboard computer: This processes sensor data and executes commands from the control station.
- The design of the robot hardware is highly dependent on its intended application. For instance, a bomb disposal robot might prioritize manipulator dexterity and explosive-resistant materials, while a surgical robot would focus on precision and sterility [4].

2. Control Station

The control station is where the human operator interacts with the robot. It typically includes:

- Input devices: These can range from simple joysticks to complex haptic devices that provide force feedback.
- Display systems: High-resolution monitors or even virtual reality headsets provide visual feedback from the robot's environment.
- Control software: This interprets the operator's commands and translates them into instructions for the robot.

Advanced control stations may also incorporate augmented reality features, overlaying sensor data or task-specific information onto the visual feed from the robot.

3. Communication Link

The communication link is the vital connection between the control station and the robot. It must be:

- Secure: To prevent unauthorized access or interference.
- High-bandwidth: To handle the large amount of data being transmitted, especially video feeds.
- Low-latency: To minimize delays between operator input and robot response.

Depending on the application, this link might be a direct radio connection, a cellular network, or even a satellite link for very remote operations. In some cases, like deep space exploration, significant communication delays must be accounted for in the system design [3].

4. User Interface

The user interface is critical in ensuring effective teleoperation. It typically includes:

- Visual feeds: Real-time video from the robot's cameras, often from multiple angles.
- Haptic feedback: Force feedback systems that allow the operator to 'feel' what the robot is touching.
- Intuitive controls: Interfaces designed to make controlling the robot as natural as possible, often mimicking the movements the operator would make if they were physically present.
- Status displays: Information about the robot's state, including battery life, signal strength, and any error conditions.

Advanced user interfaces may incorporate predictive displays to compensate for communication delays, or semi-autonomous features that allow the robot to handle certain tasks independently while still under human supervision [4].

III. SYSTEM INTEGRATION AND OPERATION

The effective operation of a teleoperated robot system relies on the seamless integration of these components. When an operator inputs a command at the control station, it's processed by the control software and sent over the communication link to the robot. The robot's onboard computer interprets these commands and activates the appropriate actuators. Simultaneously, data from the robot's sensors is sent back to the control station, providing the operator with real-time feedback about the robot's state and its environment.

This continuous loop of command and feedback allows for precise control of the robot, enabling it to perform complex tasks in challenging environments. The level of autonomy in teleoperated systems can vary, from direct control where every movement is specified by the operator, to shared control where the robot can perform certain actions autonomously while still under human supervision [3].

As technology continues to advance, we're seeing increasingly sophisticated teleoperated robot systems. Innovations in areas such as 5G communications, artificial intelligence, and haptic technologies are pushing the boundaries of what's possible with teleoperation, opening up new applications and improving the efficiency and effectiveness of existing ones [4].

Component	Sub-components	Key Features
Robot Hardware	Actuators	Convert energy into mechanical motion
	Sensors	Proprioceptive (internal state) and Exteroceptive (external environment)
	End-effectors	Task-specific 'hands' of the robot
	Onboard computer	Processes data and executes commands
Control Station	Input devices	Range from joysticks to haptic devices
	Display systems	High-resolution monitors or VR headsets
	Control software	Interprets and translates operator commands
Communication Link	-	Secure, high-bandwidth, low-latency
User Interface	Visual feeds	Real-time video from robot cameras
	Haptic feedback	Force feedback systems
	Intuitive controls	Natural, movement-mimicking interfaces
	Status displays	Robot state information

Table 1: Key Components of Teleoperated Robot Systems [3, 4]

IV. EMERGING TECHNOLOGIES ENHANCING TELEOPERATION

The field of teleoperated robotics is experiencing rapid advancements, driven by cutting-edge technologies that are revolutionizing how humans interact with and control remote robotic systems. Two of the most promising emerging technologies in this domain are haptic technology and metaverse integration.

Haptic Technology

Haptic technology is dramatically transforming the landscape of teleoperated robots by introducing tactile feedback to operators. This innovative approach allows operators to "feel" what the robot is experiencing, significantly enhancing precision, control, and overall operational efficiency [5].

How Haptic Technology Works in Teleoperation

Haptic systems in teleoperation typically consist of three main components:

- **Sensors on the Robot:** These sensors detect forces, textures, and other tactile information from the robot's environment.
- **Haptic Interface Device:** This is the hardware that the operator interacts with, such as a joystick, glove, or exoskeleton.
- **Control System:** This translates the sensor data into haptic feedback for the operator.

When an operator controls a robotic arm equipped with haptic technology, they can sense various physical properties of objects being manipulated, including:

- **Pressure:** The amount of force required to grasp or move an object.
- **Texture:** The surface characteristics of an object, such as smoothness or roughness.
- **Compliance:** How much an object deforms under pressure.
- **Weight:** The perceived heaviness of an object being lifted.

Applications and Benefits

The integration of haptic technology in teleoperation has opened up new possibilities across various industries:

- **Medical Field:** In robotic surgery, haptic feedback allows surgeons to "feel" tissue characteristics, improving precision and reducing the risk of errors.
- **Manufacturing:** For delicate assembly tasks, operators can sense the exact pressure needed to handle components without damaging them.
- **Space Exploration:** Astronauts can better control robotic arms on space stations or planetary rovers, enhancing their ability to conduct experiments and maintenance tasks.
- **Underwater Operations:** Operators of remotely operated vehicles (ROVs) can better navigate and interact with underwater environments, crucial for tasks like oil rig maintenance or marine research.

The primary benefit of haptic technology in teleoperation is the enhanced sense of presence it provides to operators. By bridging the gap between the physical and digital worlds, it allows for more intuitive control and decision-making, ultimately leading to improved task performance and reduced operator fatigue [5].

Metaverse Integration

The concept of the metaverse, a collective virtual shared space, is being explored as a revolutionary approach to create immersive control environments for teleoperated robots. By leveraging virtual reality (VR) or augmented reality (AR) interfaces, operators can be virtually present in the robot's environment, dramatically improving spatial awareness and decision-making capabilities [6].

Key Components of Metaverse Integration in Teleoperation

1. **Virtual Reality (VR) Headsets:** These provide a fully immersive visual experience, allowing operators to "step into" the robot's environment.
2. **Augmented Reality (AR) Displays:** These overlay digital information onto the real world, useful for providing additional data without fully obscuring the operator's natural vision.
3. **3D Environmental Mapping:** Real-time 3D reconstruction of the robot's surroundings, allowing operators to navigate and interact with the environment naturally.
4. **Avatar Systems:** Digital representations of the operator and robot within the virtual space, enhancing the sense of presence and scale.

Applications and Benefits

Metaverse integration in teleoperation offers several compelling advantages:

1. **Enhanced Spatial Awareness:** Operators can intuitively understand the robot's position and orientation in 3D space, crucial for complex navigation tasks.
2. **Improved Collaboration:** Multiple operators or experts can join the same virtual space, facilitating teamwork in complex operations.
3. **Training and Simulation:** The metaverse can provide a safe, cost-effective environment for operator training and scenario planning.
4. **Data Visualization:** Complex sensor data can be visualized in 3D space, making it easier for operators to interpret and act upon.

Challenges and Future Directions

While metaverse integration shows great promise, there are challenges to overcome:

1. Latency: Ensuring real-time responsiveness over long distances remains a technical hurdle.
2. Hardware Limitations: Current VR and AR devices may cause discomfort during prolonged use.
3. Data Security: As operations move into virtual spaces, ensuring the security of sensitive information becomes crucial.

Despite these challenges, ongoing research and development in 5G and edge computing technologies are paving the way for more seamless and responsive metaverse-integrated teleoperation systems [6].

As these technologies continue to evolve, we can expect to see increasingly sophisticated teleoperated robot systems that blur the lines between physical and virtual presence, opening up new possibilities for remote operation in various fields.

Aspect	Haptic Technology	Metaverse Integration
Main Function	Provides tactile feedback	Creates immersive virtual environments
Key Components	<ul style="list-style-type: none"> • Sensors on Robot • Haptic Interface Device • Control System 	<ul style="list-style-type: none"> • VR Headsets • AR Displays • 3D Environmental Mapping • Avatar Systems
Sensory Feedback	Pressure, Texture, Compliance, Weight	Visual, Spatial
Primary Benefits	<ul style="list-style-type: none"> • Enhanced precision • Improved control • Increased operational efficiency 	<ul style="list-style-type: none"> • Enhanced spatial awareness • Improved collaboration • Better training and simulation • Advanced data visualization
Key Applications	<ul style="list-style-type: none"> • Medical (robotic surgery) • Manufacturing • Space Exploration • Underwater Operations 	<ul style="list-style-type: none"> • Complex Navigation Tasks • Collaborative Operations • Training and Simulation • Data Interpretation
Main Challenges	Not explicitly mentioned in the text	<ul style="list-style-type: none"> • Latency • Hardware Limitations • Data Security

Table 2: Comparison of Emerging Technologies in Teleoperation: Haptics vs Metaverse Integration [5, 6]

V. APPLICATIONS OF TELEOPERATED ROBOTS

Teleoperated robots have revolutionized various industries by extending human capabilities into environments that are dangerous, inaccessible, or remote. These sophisticated machines allow for precise control and decision-making in challenging scenarios, significantly improving safety and efficiency across multiple sectors. Let's explore some of the key applications of teleoperated robots in different fields.

Military and Defense

In military and defense operations, teleoperated robots play crucial roles in protecting human lives and gathering critical intelligence [7].

Bomb Disposal

Explosive Ordnance Disposal (EOD) robots are essential tools for bomb technicians, equipped with:

- High-resolution cameras for detailed visual inspection
- Manipulator arms for handling suspicious objects
- X-ray systems for internal examination of packages
- Disruptor tools for safely neutralizing explosive devices

These features allow bomb disposal experts to inspect and neutralize explosive devices from a safe distance, significantly reducing the risk to human life.

Reconnaissance

Teleoperated drones and ground robots are extensively used for reconnaissance in hostile territories, offering:

- Real-time intelligence gathering without risking human lives
- Access to areas too dangerous or difficult for human operatives
- Long-duration surveillance capabilities
- Integration with other military systems for coordinated operations

These robots can be equipped with various sensors, including high-resolution cameras, thermal imaging, and chemical detectors, providing comprehensive situational awareness to military personnel.

Hazardous Environments

Teleoperated robots are invaluable in industries where human presence in certain areas can be dangerous or even fatal.

Nuclear Plants

In nuclear facilities, robots perform critical tasks such as:

- Routine inspections of radioactive areas
- Maintenance and repairs of contaminated equipment
- Decontamination processes
- Handling of radioactive materials

By using these robots, the nuclear industry can significantly reduce human exposure to harmful radiation, improving safety standards and operational efficiency.

Oil Rigs

Underwater teleoperated vehicles (ROVs) have revolutionized offshore oil and gas operations. These robots can:

- Inspect subsea infrastructure for damage or wear
- Perform repairs and maintenance on underwater equipment
- Assist in the installation of new underwater structures
- Conduct environmental surveys around drilling sites

ROVs reduce the need for dangerous diving operations, allowing for deeper, longer, and safer underwater work.

Chemical Factories

In chemical manufacturing facilities, teleoperated robots handle tasks in environments with toxic substances, harmful fumes, or extreme temperatures. Applications include:

- Handling and transporting hazardous materials
- Conducting inspections in areas with dangerous chemical concentrations
- Performing maintenance in high-temperature or high-pressure environments
- Emergency response in case of chemical spills or leaks

These robots enhance safety protocols and enable operations that would be extremely risky for human workers.

Healthcare

The healthcare sector has seen significant advancements through the integration of teleoperated robotic systems [8].

Telesurgery

Teleoperated surgical robots allow surgeons to perform operations on patients in remote locations. Key features include:

- High-precision robotic arms controlled by the surgeon
- 3D visualization systems for enhanced depth perception
- Haptic feedback for improved tactile sensation
- Tremor filtration for steadier movements

These systems enable expert surgeons to operate on patients in underserved areas or in situations where direct physical presence is not possible.

Patient Care

Telepresence robots in healthcare settings facilitate:

- Remote consultations between doctors and patients
- Virtual ward rounds in isolated areas or during infectious disease outbreaks
- Continuous monitoring of patients in intensive care units
- Delivery of medication and supplies in quarantine zones

These applications have proven particularly valuable during global health crises, allowing for continued care while minimizing the risk of disease transmission.

Space Exploration

Teleoperated robots are at the forefront of space exploration, enabling humans to explore and study environments beyond Earth.

Planetary Rovers

Mars rovers like NASA's Curiosity and Perseverance are prime examples of teleoperated robots in space exploration. These rovers:

- Explore the Martian surface, collecting geological samples
- Conduct on-site scientific experiments
- Capture high-resolution images and videos of the Martian landscape
- Search for signs of past or present microbial life

Despite the significant time delay in communications, these rovers have greatly expanded our understanding of Mars and paved the way for future manned missions.

Satellite Servicing

Teleoperated robots are being developed for on-orbit satellite servicing. These robots can:

- Repair malfunctioning satellites
- Refuel satellites to extend their operational lifespan
- Upgrade satellite hardware and software
- Remove space debris to maintain safe orbital environments

This application not only extends the life of valuable space assets but also helps in managing the growing issue of space debris.

As technology continues to advance, we can expect to see even more diverse and sophisticated applications of teleoperated robots across these and other industries, further extending human capabilities and improving safety in challenging environments.

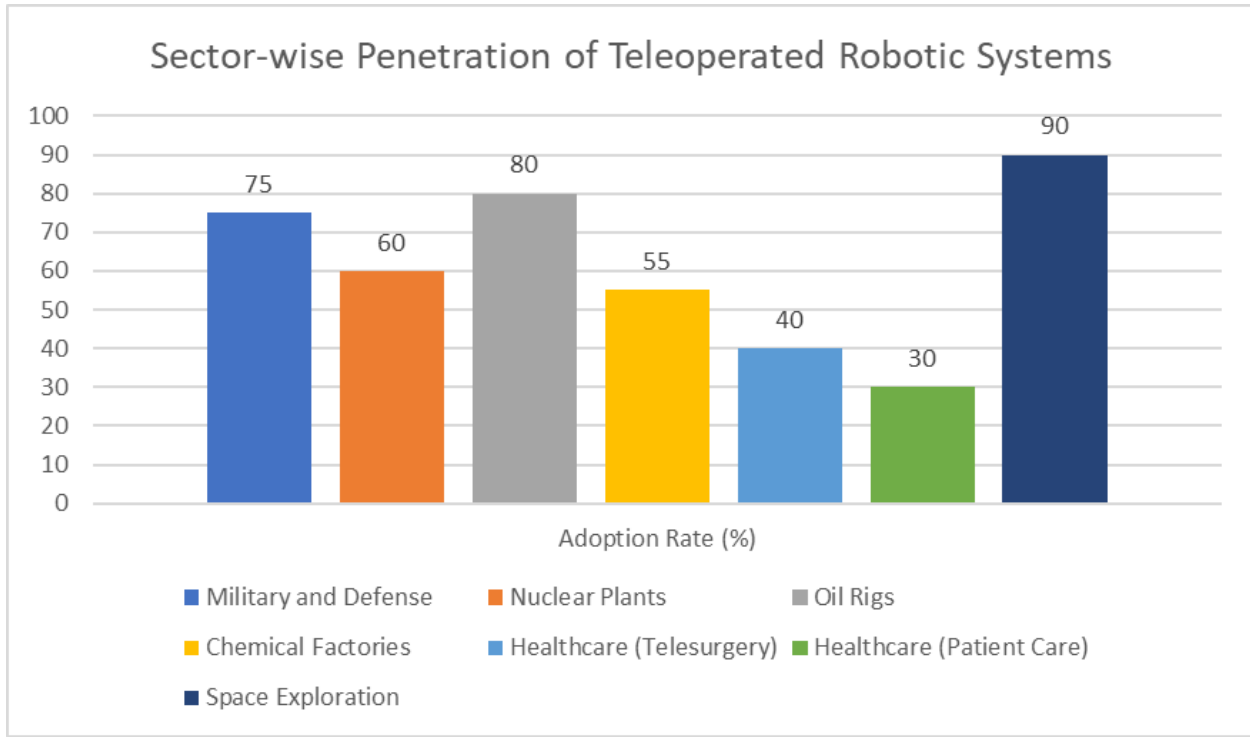


Fig. 1: Adoption Rates and Deployment of Teleoperated Robots Across Various Sectors [7, 8]

VI. THE FUTURE OF WORK: TELEOPERATION AND REMOTE PRESENCE

As we progress further into the digital age, teleoperated robots are set to revolutionize the concept of work, supporting and expanding the evolving "work from anywhere" paradigm. This technological advancement allows individuals to perform physical tasks remotely, bridging the gap between digital work and physical presence. The integration of teleoperation into various industries is poised to reshape our understanding of the workplace and create new opportunities for both employers and employees [9].

Advantages of Teleoperation in the Workplace

1. Increased Safety

One of the most significant benefits of teleoperation is the enhancement of worker safety. By allowing workers to control robots remotely, companies can significantly reduce the risks associated with dangerous tasks:

- **Hazardous Environments:** Workers can operate in toxic, radioactive, or extreme temperature environments without physical exposure.
- **Dangerous Machinery:** Complex and potentially dangerous machinery can be operated from a safe distance, reducing the risk of accidents.
- **Emergency Response:** First responders can assess and intervene in dangerous situations (e.g., fires, chemical spills) with minimal personal risk.

This increased safety not only protects workers but also can lead to reduced insurance costs and improved compliance with occupational safety regulations.

2. Global Talent Pool

Teleoperation breaks down geographical barriers, allowing companies to access specialized skills from anywhere in the world:

- **Skill Shortages:** Organizations can fill skill gaps by engaging experts regardless of their physical location.
- **Diversity and Inclusion:** Companies can build more diverse teams by hiring from a global talent pool, including individuals who may have mobility limitations.

- **Specialized Expertise:** Rare or highly specialized skills can be leveraged for specific tasks without the need for relocation.

This global approach to talent acquisition can lead to more innovative and competitive organizations, as they can tap into a wider range of perspectives and expertise [10].

3. Reduced Travel

The ability to provide on-site assistance through teleoperated robots significantly reduces the need for physical travel:

- **Cost Savings:** Companies can save on travel expenses, including transportation, accommodation, and per diems.
- **Time Efficiency:** Experts can provide immediate assistance without the delays associated with travel.
- **Environmental Impact:** Reduced travel leads to lower carbon emissions, supporting sustainability goals.
- **Work-Life Balance:** Less travel can contribute to improved work-life balance for employees who would otherwise spend significant time on the road.

4. 24/7 Operations

Teleoperation enables companies to leverage time zone differences for continuous operations:

- **Round-the-Clock Productivity:** Tasks can be handed off between operators in different time zones, ensuring constant progress.
- **Rapid Response:** Companies can provide immediate support or service regardless of local time.
- **Equipment Utilization:** Expensive machinery or facilities can be used more efficiently by operating continuously.
- **Global Market Presence:** Businesses can maintain a constant presence in global markets, improving customer service and competitiveness.

Challenges and Considerations

While the benefits of teleoperation in the workplace are significant, there are challenges that need to be addressed:

- **Technological Infrastructure:** Reliable, high-speed, low-latency communication networks are crucial for effective teleoperation.
- **Security Concerns:** As operations become more remote, ensuring the security of control systems and data becomes paramount.
- **Legal and Regulatory Framework:** New laws and regulations may be needed to address liability, cross-border operations, and labor rights in teleoperation scenarios.
- **Human Factors:** Operators may face new ergonomic challenges and potential isolation. Strategies for maintaining team cohesion and company culture in remote settings will be necessary.
- **Training and Adaptation:** Workers and organizations will need to adapt to new ways of working, requiring significant training and possibly new educational programs [9].

The Road Ahead

As teleoperation technology continues to advance, we can expect to see its integration into an increasingly diverse range of industries. From manufacturing and healthcare to space exploration and deep-sea operations, the ability to project human skills and decision-making capabilities remotely will open up new frontiers of possibility.

The future workplace will likely be a hybrid environment, where physical presence, remote work, and teleoperation coexist and complement each other. This evolution promises to make work more flexible, safe, and accessible, while also presenting new challenges that will require innovative solutions [10].

As we move forward, it will be crucial for organizations, policymakers, and educators to work together to harness the full potential of teleoperation while addressing its challenges. By doing so, we can create a future of work that is more inclusive, efficient, and aligned with the rapidly changing dynamics of the global economy.

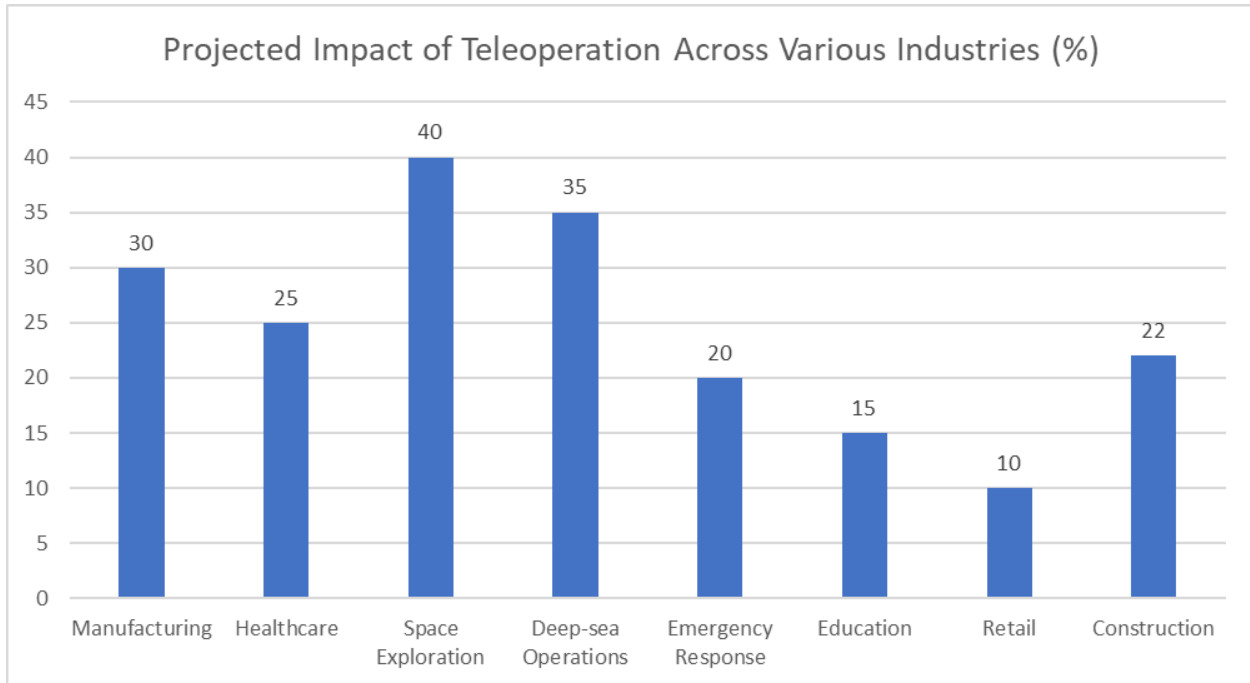


Fig. 2: Industry-wise Analysis of Teleoperation Benefits and Adoption [9, 10]

VII. CHALLENGES AND FUTURE DEVELOPMENTS

While teleoperated robots have demonstrated significant potential across various industries, several challenges must be addressed to fully realize their capabilities. As researchers and engineers work to overcome these obstacles, we can anticipate substantial advancements that will shape the future of remote operations and robotics [11].

Current Challenges

1. Latency

One of the most critical challenges in teleoperation is latency – the delay between an operator's input and the robot's response. This issue becomes particularly pronounced over long distances or in space applications.

- Impact: High latency can lead to reduced precision, increased operator fatigue, and potential safety risks.
- Causes: Network delays, signal processing time, and the physical limitations of data transmission speed.
- Current Research: Investigations into predictive displays, adaptive control systems, and edge computing solutions to mitigate latency effects.

2. Bandwidth

Stable, high-bandwidth connections are crucial for the seamless operation of teleoperated robots, especially those requiring real-time video feedback or complex sensor data transmission.

- Requirements: Many teleoperation applications require consistent, high-speed data transfer for effective control and feedback.
- Challenges: Limited infrastructure in remote areas, interference in hostile environments, and the high cost of satellite communications.
- Potential Solutions: 5G networks, mesh networking technologies, and advanced data compression techniques.

3. Haptic Fidelity

Improving the accuracy and range of tactile feedback is essential for enhancing operator performance and sense of presence.

- Current Limitations: Many existing haptic systems provide limited force range and lack the ability to simulate complex textures or material properties.

- Research Directions: Development of advanced haptic interfaces, exploration of neuromorphic tactile sensors, and integration of machine learning for improved haptic rendering.
- Applications: Enhanced haptic fidelity is particularly crucial in telesurgery, remote maintenance, and space exploration.

4. Autonomy Integration

Balancing human control with autonomous functions is a complex challenge that holds significant potential for improving efficiency and capabilities of teleoperated systems.

- Objective: To leverage the strengths of both human operators (adaptability, decision-making in complex scenarios) and autonomous systems (rapid data processing, consistency in repetitive tasks).
- Challenges: Determining optimal task allocation, ensuring smooth transitions between autonomous and manual control, and maintaining operator situational awareness.
- Current Approaches: Shared control paradigms, adjustable autonomy systems, and context-aware automation [12].

Future Developments

As researchers and engineers address these challenges, we can anticipate several exciting developments in the field of teleoperated robotics:

1. Advanced Human-Robot Interfaces

Future interfaces will likely incorporate mixed reality technologies, providing operators with immersive, intuitive control environments.

- Potential Features: Holographic displays, full-body motion capture for natural control inputs, and advanced haptic suits for comprehensive tactile feedback.
- Benefits: Improved operator performance, reduced training time, and enhanced sense of presence in remote environments.

2. AI-Enhanced Teleoperation

Artificial Intelligence will play an increasingly important role in supporting teleoperation:

- Adaptive Control Systems: AI algorithms that learn from operator behaviors to optimize control mappings and reduce cognitive load.
- Predictive Displays: Systems that use AI to predict and compensate for latency, providing smoother operation over long distances.
- Autonomous Assistance: AI-driven autonomous functions that can take over routine tasks or provide decision support in complex scenarios.

3. Networked Teleoperation

Future systems will likely involve multiple operators and robots working in coordinated networks:

- Collaborative Control: Enabling multiple operators to work together on complex tasks, leveraging diverse expertise.
- Swarm Teleoperation: Interfaces and control systems for managing large numbers of semi-autonomous robots in coordinated operations.
- Global Expert Networks: Systems that can dynamically connect robots with the most suitable operators worldwide based on task requirements.

4. Biointegrated Control Systems

Advancements in brain-computer interfaces and bioengineering may lead to more direct and intuitive control methods:

- Neural Interfaces: Direct brain-to-robot control systems for enhanced precision and reduced cognitive load.
- Sensory Augmentation: Technologies that expand human sensory capabilities, allowing operators to "feel" beyond normal human limitations.

5. Standardization and Interoperability

As the field matures, we can expect efforts towards standardization:

- Common Protocols: Development of standard communication protocols for teleoperation across different platforms and industries.

- Interoperable Systems: Robots and control stations designed for cross-compatibility, allowing for more flexible and resilient teleoperation networks.

VIII. CONCLUSION

As teleoperated robots continue to evolve, they are poised to fundamentally transform how we approach work, exploration, and interaction in remote or hazardous environments. The integration of advanced technologies such as AI, mixed reality, and brain-computer interfaces promises to enhance the capabilities and intuitiveness of these systems. While challenges like latency, bandwidth limitations, and the need for improved haptic fidelity persist, ongoing research and development efforts are steadily addressing these issues. The future of teleoperated robotics is likely to see increased standardization, improved interoperability, and the emergence of global expert networks. As these systems become more sophisticated and widely adopted, they will continue to extend human capabilities, improve safety in dangerous situations, and open up new possibilities across various industries. The ongoing advancements in teleoperated robotics not only promise technological breakthroughs but also herald a shift in how we perceive the boundaries between physical presence and remote operation, potentially reshaping the global workforce and our approach to complex tasks in challenging environments.

REFERENCES

- [1] T. B. Sheridan, "Telerobotics, Automation, and Human Supervisory Control," MIT Press, 1992. [Online]. Available: <https://mitpress.mit.edu/books/telerobotics-automation-and-human-supervisory-control>
- [2] K. Goldberg and R. Siegwart, "Beyond Webcams: An Introduction to Online Robots," MIT Press, 2002. [Online]. Available: <https://mitpress.mit.edu/books/beyond-webcams>
- [3] J. Funda and R. P. Paul, "A symbolic teleoperator interface for time-delayed underwater robot manipulation," in *Oceanic Engineering International*, vol. 1, no. 2, pp. 111-122, 1997. [Online]. Available: <https://ieeexplore.ieee.org/document/606520>
- [4] P. F. Hokayem and M. W. Spong, "Bilateral teleoperation: An historical survey," in *Automatica*, vol. 42, no. 12, pp. 2035-2057, 2006. [Online]. Available: <https://www.sciencedirect.com/science/article/abs/pii/S0005109806002871>
- [5] A. M. Okamura, "Haptic feedback in robot-assisted minimally invasive surgery," *Current Opinion in Urology*, vol. 19, no. 1, pp. 102-107, 2009. [Online]. Available: <https://www.ncbi.nlm.nih.gov/pmc/articles/PMC2701448/>
- [6] L. E. Parker, "Distributed Intelligence: Overview of the Field and its Application in Multi-Robot Systems," *Journal of Physical Agents*, vol. 2, no. 1, pp. 5-14, 2008. [Online]. Available: <https://www.semanticscholar.org/paper/Distributed-Intelligence%3A-Overview-of-the-Field-and-Parker/f44d0bff7d576094d1069308b3728072c8f08a13>
- [7] R. R. Murphy, "Human-robot interaction in rescue robotics," *IEEE Transactions on Systems, Man, and Cybernetics, Part C (Applications and Reviews)*, vol. 34, no. 2, pp. 138-153, May 2004. [Online]. Available: <https://ieeexplore.ieee.org/document/1291662>
- [8] G. S. Guthart and J. K. Salisbury, "The Intuitive™ telesurgery system: overview and application," in *Proceedings 2000 ICRA. Millennium Conference. IEEE International Conference on Robotics and Automation. Symposia Proceedings (Cat. No.00CH37065)*, San Francisco, CA, USA, 2000, pp. 618-621 vol.1. [Online]. Available: <https://ieeexplore.ieee.org/document/844121>
- [9] B. Kehoe, S. Patil, P. Abbeel and K. Goldberg, "A Survey of Research on Cloud Robotics and Automation," in *IEEE Transactions on Automation Science and Engineering*, vol. 12, no. 2, pp. 398-409, April 2015. [Online]. Available: <https://ieeexplore.ieee.org/document/7006734>
- [10] J. Vertesi, "Seamful Spaces: Heterogeneous Infrastructures in Interaction," *Science, Technology, & Human Values*, vol. 39, no. 2, pp. 264-284, 2014. [Online]. Available: <https://journals.sagepub.com/doi/10.1177/0162243913516012>
- [11] M. Selvaggio et al., "Autonomy in Physical Human-Robot Interaction: A Brief Survey," in *IEEE Robotics & Automation Magazine*, vol. 28, no. 4, pp. 91-103, Dec. 2021. [Online]. Available: <https://ieeexplore.ieee.org/document/9501975>
- [12] A. M. Jarc and I. Nisky, "Robot-Assisted Surgery: An Emerging Platform for Human Neuroscience Research," in *Frontiers in Human Neuroscience*, vol. 9, p. 315, 2015. [Online]. Available: <https://www.frontiersin.org/articles/10.3389/fnhum.2015.00315/full>



INTERNATIONAL
STANDARD
SERIAL
NUMBER
INDIA



INTERNATIONAL JOURNAL OF INNOVATIVE RESEARCH

IN SCIENCE | ENGINEERING | TECHNOLOGY

 9940 572 462  6381 907 438  ijirset@gmail.com



www.ijirset.com

Scan to save the contact details