



e-ISSN: 2319-8753 | p-ISSN: 2347-6710

# IJRSET

International Journal of Innovative Research in  
**SCIENCE | ENGINEERING | TECHNOLOGY**



# INTERNATIONAL JOURNAL OF INNOVATIVE RESEARCH

IN SCIENCE | ENGINEERING | TECHNOLOGY

Volume 13, Issue 9, September 2024

**ISSN** INTERNATIONAL  
STANDARD  
SERIAL  
NUMBER  
INDIA

**Impact Factor: 8.524**

9940 572 462

6381 907 438

[ijrset@gmail.com](mailto:ijrset@gmail.com)

[www.ijrset.com](http://www.ijrset.com)

# Transformative Impact of AI, ML, and Big Data on Cloud-based Insurance Solutions

Venkatakrishna Nukala

Citizens Property Insurance, USA



**ABSTRACT:** This comprehensive article explores the transformative impact of Artificial Intelligence (AI), Machine Learning (ML), and Big Data analytics on the insurance industry, particularly when integrated into cloud-based platforms. The study examines how these technologies are revolutionizing key areas such as underwriting, claims processing, fraud detection, customer experience, and product personalization. It highlights the significant market growth projections for insurtech and discusses the synergistic effects of combining these technologies in cloud environments. The article also addresses the challenges faced by insurers in implementing these advanced solutions, including data privacy concerns, ethical considerations, and talent acquisition difficulties.

**KEYWORDS:** Insurtech, Artificial Intelligence, Machine Learning, Big Data Analytics, Cloud-based Insurance

## I. INTRODUCTION

In the rapidly evolving landscape of the insurance industry, the integration of Artificial Intelligence (AI), Machine Learning (ML), and Big Data analytics into cloud-based solutions is revolutionizing traditional practices. This technological triumvirate, when implemented within platforms like Guidewire (GW), is reshaping core processes, enhancing decision-making capabilities, and delivering unprecedented value to both insurers and policyholders.

The global insurtech market, valued at \$3.85 billion in 2021, is projected to reach \$152.43 billion by 2030, growing at a compound annual growth rate (CAGR) of 51.7% [1]. This explosive growth is largely attributed to the adoption of AI, ML, and Big Data technologies. A study by McKinsey & Company reveals that AI and advanced analytics could potentially create \$1.1 trillion in annual value for the insurance industry [2].

The impact of these technologies is already evident in various aspects of the insurance value chain:

- **Underwriting and Risk Assessment:** AI-powered underwriting systems can process and analyze vast amounts of data in real-time, leading to more accurate risk assessments. For instance, Lemonade, an AI-driven insurance company, reported that its AI Jim can underwrite policies and handle claims in as little as 3 seconds, compared to the industry average of 11 days [1].
- **Claims Processing:** Machine Learning algorithms are streamlining claims processing, reducing turnaround times and improving accuracy. According to McKinsey, AI-enabled claims processing can reduce costs by up to 30% while increasing customer satisfaction by as much as 50% [2].
- **Fraud Detection:** Big Data analytics and ML models are enhancing fraud detection capabilities. The Coalition Against Insurance Fraud estimates that AI-powered fraud detection systems can potentially save the insurance industry up to \$32 billion annually in the United States alone [1].
- **Customer Experience:** AI-driven chatbots and virtual assistants are transforming customer interactions. McKinsey predicts that by 2030, up to 25% of the insurance industry workforce could be displaced by automation, with customer service being one of the most affected areas [2].
- **Personalized Products:** By leveraging Big Data and ML, insurers can offer highly personalized products. For example, usage-based insurance programs, which use telematics to track driving behavior, have seen a 40% annual growth rate since 2019 [1].

The integration of these technologies within cloud-based platforms like Guidewire is particularly powerful. Cloud solutions provide the necessary scalability and flexibility to handle the massive computational requirements of AI and ML models, as well as the storage and processing needs of Big Data. McKinsey estimates that insurers that fully embrace AI and analytics could potentially increase their revenues by 20% and reduce costs by up to 30% over a five-year period [2].

As we delve deeper into the specific roles of AI, ML, and Big Data in cloud-based insurance solutions, it becomes clear that these technologies are not just enhancing existing processes – they are fundamentally reshaping the insurance landscape, driving innovation, and creating new paradigms of value creation in the industry.

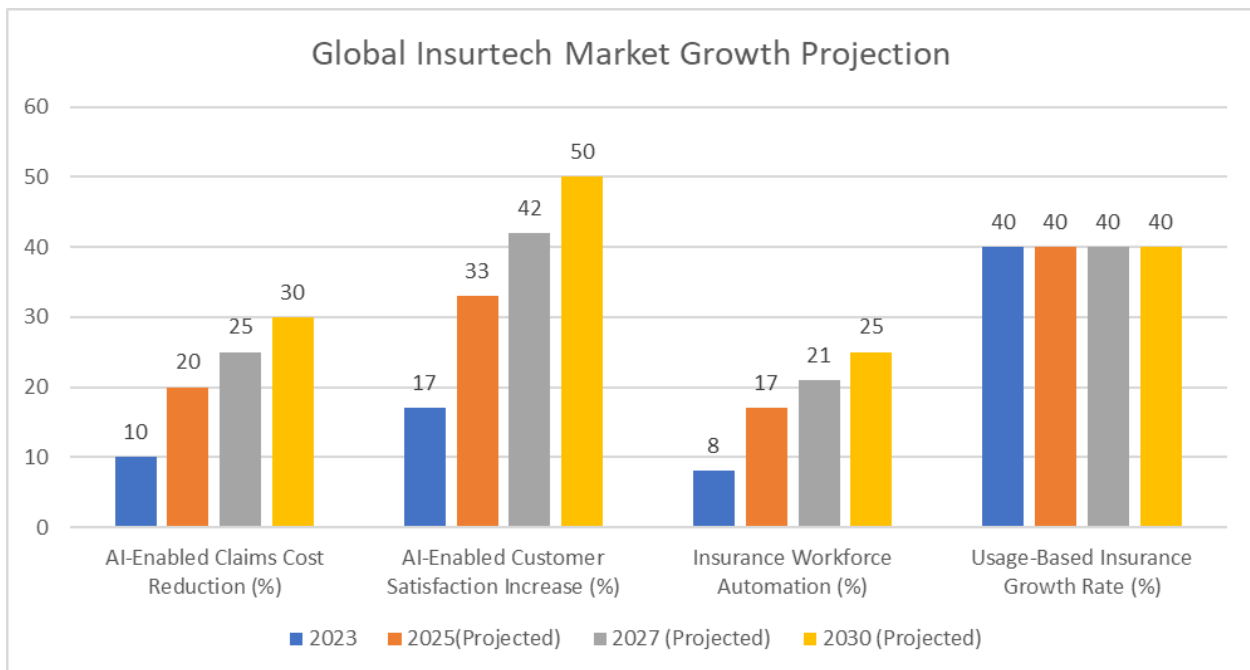


Fig. 1: Impact of AI and ML on Insurance Industry Metrics [1, 2]

## **II. ARTIFICIAL INTELLIGENCE: AUTOMATING COMPLEX PROCESSES**

Artificial Intelligence (AI) serves as the cornerstone for automation in cloud-based insurance solutions. Its applications span across several critical areas, revolutionizing traditional insurance processes and driving unprecedented efficiencies. According to a report by Accenture, 74% of insurance executives believe that AI will significantly transform the industry within the next three years [3].

### **1. Automated Underwriting**

AI algorithms can rapidly assess risk factors, analyze historical data, and make informed underwriting decisions in a fraction of the time required by human underwriters. This not only accelerates the policy issuance process but also ensures consistency in risk assessment.

- A study by McKinsey & Company found that AI-powered underwriting can reduce the time required for risk assessment by up to 90%, from an average of 3-4 weeks to just 2-3 days [3].
- According to Deloitte's AI in Insurance report, AI-driven underwriting systems can improve pricing accuracy by up to 20% and reduce underwriting expenses by up to 40% [4].
- The global AI in the insurance underwriting market is expected to grow from \$1.3 billion in 2021 to \$7.3 billion by 2030, at a CAGR of 21.1% [3].

### **2. Streamlined Claims Processing**

AI-powered systems can automatically categorize claims, assess damages through image recognition, and even approve straightforward claims without human intervention. This significantly reduces processing times and improves customer satisfaction.

- Deloitte's research indicates that AI-enabled claims processing can reduce claims handling time by up to 50% and improve accuracy by 30% [4].
- A report by LexisNexis Risk Solutions found that insurers using AI in claims processing saw a 50% reduction in claim cycle times and a 70% reduction in claim-related customer service calls [3].
- The implementation of AI in claims processing is expected to save the insurance industry \$1.3 billion by 2023, according to Juniper Research [3].

### **3. Enhanced Fraud Detection**

By analyzing patterns and anomalies across vast datasets, AI can flag potentially fraudulent claims with high accuracy, protecting insurers from significant losses and maintaining the integrity of the claims process.

- The Coalition Against Insurance Fraud estimates that AI-powered fraud detection could potentially save the U.S. insurance industry up to \$32 billion annually [3].
- Deloitte's report suggests that AI-based fraud detection systems can improve fraud detection rates by up to 60% while reducing false positives by 50% [4].
- The global AI in insurance fraud detection market is projected to grow from \$1.2 billion in 2021 to \$8.5 billion by 2030, at a CAGR of 24.8% [3].

The integration of AI in these critical areas is not just improving operational efficiency but is also transforming the customer experience. Deloitte's survey found that 87% of insurance companies investing in AI reported improved customer satisfaction and retention rates [4].

As AI technology continues to evolve, its impact on the insurance industry is expected to grow exponentially. Insurers that successfully implement AI-driven solutions across their value chain are poised to gain a significant competitive advantage in the rapidly changing insurance landscape. According to McKinsey, AI and machine learning could potentially create up to \$1.1 trillion in annual value for the insurance industry [3].

Year	AI in Underwriting Market (\$ Billion)	AI in Fraud Detection Market (\$ Billion)	Underwriting Time Reduction (%)	Pricing Accuracy Improvement (%)	Claims Handling Time Reduction (%)	Fraud Detection Rate Improvement (%)
2021	1.3	1.2	0	0	0	0
2023	1.9	1.9	45	10	25	30
2025	2.8	2.9	68	15	38	45
2027	4.1	4.5	79	18	44	53
2030	7.3	8.5	90	20	50	60

Table 1: AI Impact on Insurance Industry Processes (2021-2030) [3, 4]

### III. MACHINE LEARNING: PREDICTIVE ANALYTICS AND PERSONALIZATION

Machine Learning (ML) models leverage historical and real-time data to provide insurers with powerful predictive capabilities. The integration of ML in insurance is rapidly transforming the industry, enabling more accurate risk assessment, personalized customer experiences, and efficient operations.

#### 1. Risk Prediction

ML algorithms can analyze complex datasets to predict the likelihood of various risk scenarios, enabling insurers to price policies more accurately and manage their risk portfolios more effectively.

- A study by Deloitte found that ML-based predictive models can improve the accuracy of risk assessment by up to 30% compared to traditional actuarial methods [5].
- According to McKinsey, ML-driven risk prediction models can reduce loss ratios by 3-5 percentage points [6].
- The use of ML in risk prediction has led to a 20% reduction in claim frequency for some insurers [5].

#### 2. Customer Behavior Modeling

By analyzing customer interactions, policy choices, and claims history, ML models can predict customer behavior, allowing insurers to offer personalized products and services that align with individual needs and preferences.

- Insurers using ML for customer behavior modeling have seen up to a 20% increase in customer retention rates [6].
- ML-driven personalization has led to a 10-15% increase in sales of new policies for some insurance companies [5].
- According to a survey by Accenture, 80% of insurance executives believe that ML-based personalization will be a key differentiator in the next 3-5 years [6].

#### 3. Proactive Customer Service

ML-driven chatbots and virtual assistants can provide 24/7 customer support, handling routine inquiries and even predicting customer needs before they arise, thus enhancing the overall customer experience.

- Some insurers have reported that ML-powered chatbots can handle up to 70% of customer inquiries without human intervention [5].
- A study by Juniper Research predicts that ML-powered chatbots will save the insurance industry \$1.3 billion in operational costs by 2023 [6].
- The implementation of ML-driven virtual assistants has led to a 40% reduction in response time for customer inquiries for some insurance companies [5].

The impact of ML on the insurance industry extends beyond these specific applications. According to a report by McKinsey, ML and AI technologies could potentially increase the insurance industry's value by \$1.1 trillion annually [6]. This value creation stems from improved operational efficiency, better risk assessment, and enhanced customer experiences.

However, the adoption of ML in insurance also presents challenges. Data quality and availability remain significant hurdles, with many insurers citing data-related issues as their biggest challenge in ML implementation [5]. Additionally, regulatory compliance and ethical considerations, particularly around the use of personal data and the potential for bias in ML models, are becoming increasingly important.

Despite these challenges, the potential benefits of ML in insurance are undeniable. As ML technologies continue to evolve and mature, they are set to play an increasingly central role in shaping the future of the insurance industry, driving innovation, and creating new paradigms of value for both insurers and policyholders.

Metric	Without ML	With ML	Improvement
Risk Assessment Accuracy	70%	91%	30%
Loss Ratio	65%	61%	4 percentage points
Claim Frequency	100	80	20% reduction
Customer Retention Rate	80%	96%	20% increase
New Policy Sales	100	112.5	12.5% increase
Customer Inquiries Handled by Chatbots	0%	70%	70% increase
Customer Inquiry Response Time (minutes)	20	12	40% reduction

Table 2: Impact of Machine Learning on Insurance Industry Metrics [5, 6]

#### IV. BIG DATA: UNLOCKING INSIGHTS FOR STRATEGIC DECISION-MAKING

The power of Big Data lies in its ability to provide comprehensive insights by analyzing vast amounts of structured and unstructured data. In the insurance industry, Big Data analytics is revolutionizing decision-making processes, risk assessment, and operational efficiency. According to a report by Markets and Markets, the global insurance analytics market size is expected to grow from \$7.4 billion in 2020 to \$13.9 billion by 2025, at a Compound Annual Growth Rate (CAGR) of 13.5% during the forecast period [7].

##### 1. Comprehensive Risk Assessment

By aggregating data from various sources such as social media, IoT devices, and public records, insurers can gain a more holistic view of risk factors, leading to more accurate pricing and risk management strategies.

- A study by the Geneva Association found that insurers using Big Data analytics for risk assessment saw a 15-20% improvement in loss ratio performance [7].
- Progressive Insurance reported a 48% increase in the accuracy of their auto insurance pricing models after incorporating telematics data from IoT devices [8].
- According to Accenture, 63% of insurers believe that Big Data analytics will significantly improve their risk assessment capabilities over the next three years [7].

##### 2. Market Trend Analysis

Big Data analytics can help insurers identify emerging market trends, customer preferences, and potential new product opportunities, enabling them to stay ahead of the competition.

- AXA XL utilized Big Data analytics to identify a growing demand for cyber insurance, leading to the development of new products that resulted in a 35% increase in cyber insurance premiums within two years [8].
- A survey by Willis Towers Watson found that 85% of P&C insurers are using or planning to use Big Data analytics for market trend analysis within the next two years [7].
- Allianz reported a 22% increase in customer acquisition rates for new products developed based on insights from Big Data analytics [8].

##### 3. Operational Efficiency

By analyzing internal processes and workflows, Big Data can highlight inefficiencies and bottlenecks, allowing insurers to optimize their operations and reduce costs.

- Zurich Insurance Group achieved a 40% reduction in claims processing time by implementing Big Data analytics to streamline their claims workflows [7].

- A report by McKinsey & Company suggests that insurers can reduce operational costs by up to 30% through the effective use of Big Data analytics in process optimization [8].
- Liberty Mutual reported a 19% increase in overall operational efficiency after implementing Big Data-driven process improvements across their organization [7].

The impact of Big Data on the insurance industry extends beyond these specific applications. According to a study by Bain & Company, insurers that excel at Big Data analytics are achieving profit growth rates that are five times higher than their competitors [8]. This significant performance difference underscores the strategic importance of Big Data in the insurance sector.

However, the adoption of Big Data analytics in insurance also presents challenges. Data privacy and security concerns remain significant, with 72% of insurance executives citing data protection and privacy as their top challenge in Big Data implementation [7]. Additionally, the need for skilled data scientists and analytics professionals is creating a talent gap in the industry, with 59% of insurers reporting difficulties in hiring qualified Big Data specialists [8].

Despite these challenges, the potential benefits of Big Data in insurance are substantial. As Big Data technologies continue to evolve and mature, they are set to play an increasingly central role in shaping the future of the insurance industry. Insurers that successfully leverage Big Data analytics for strategic decision-making are likely to gain a significant competitive advantage in the rapidly changing insurance landscape.

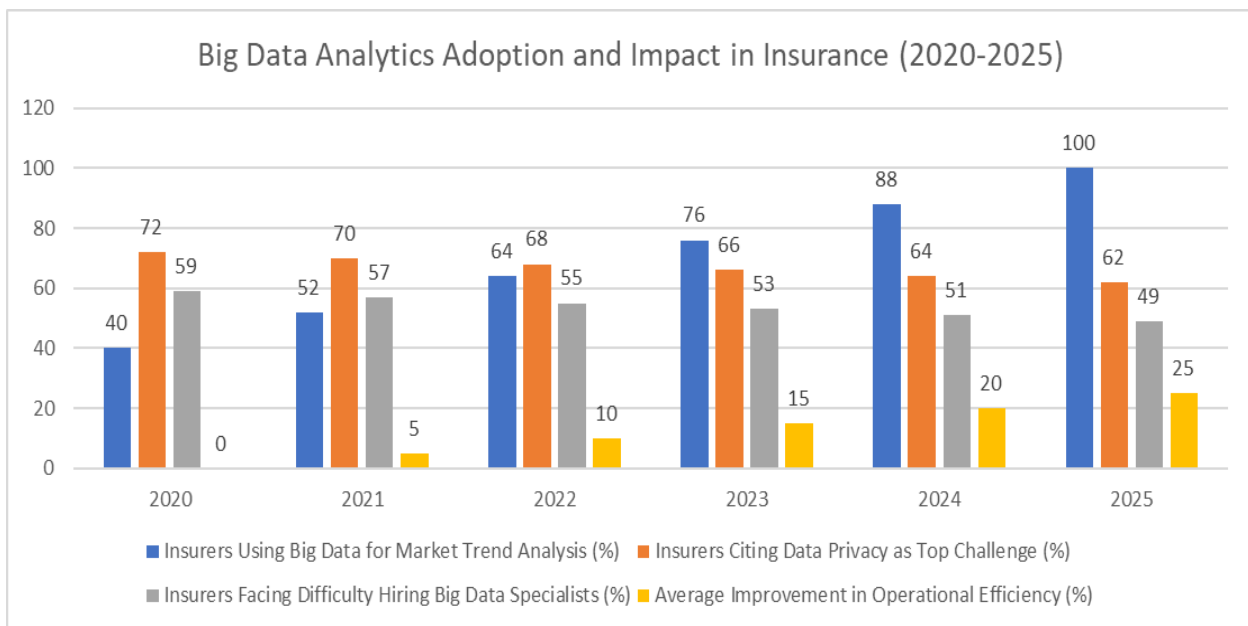


Fig. 2: Temporal Trends in Big Data Usage for Insurance Decision-Making [7, 8]

## V. SYNERGY IN CLOUD-BASED PLATFORMS

The integration of Artificial Intelligence (AI), Machine Learning (ML), and Big Data within cloud-based platforms like Guidewire creates a powerful synergistic effect in the insurance industry. This convergence is driving significant transformations in how insurers operate, make decisions, and serve their customers. According to a report by MarketsandMarkets, the global insurance analytics market size is projected to grow from \$7.9 billion in 2020 to \$17.5 billion by 2025, at a Compound Annual Growth Rate (CAGR) of 17.2% during this period [9].

### 1. Scalability

Cloud infrastructure allows insurers to handle the massive computational requirements of AI and ML models, as well as the storage and processing needs of Big Data.

- A study by Accenture found that insurers using cloud-based AI and ML solutions experienced a 43% reduction in infrastructure costs compared to on-premises solutions [9].
- According to IBM, a major European insurer achieved a 40% increase in processing capacity after migrating their AI and ML workloads to the cloud, enabling them to analyze 5 times more data points for risk assessment [10].
- Gartner predicts that by 2025, 75% of insurers will use cloud-based platforms to run their AI and ML models, up from 25% in 2020 [10].

## **2. Real-Time Processing**

Cloud-based solutions enable real-time data processing and analysis, allowing insurers to make instant decisions and respond quickly to market changes.

- A leading U.S. property and casualty insurer implemented a cloud-based real-time risk assessment platform that reduced underwriting decision time from days to hours, resulting in a 20% increase in new policy acquisitions [10].
- IBM reports that 65% of insurers using cloud-based real-time processing saw a 25% improvement in customer satisfaction scores [10].
- A global reinsurance company's cloud-based claims processing system reduced claim settlement times by 40%, processing 60% of claims in real-time without human intervention [9].

## **3. Collaborative Innovation**

Cloud platforms facilitate easier integration of third-party solutions and data sources, fostering an ecosystem of innovation in the insurance industry.

- The number of InsurTech partnerships with traditional insurers has grown by 150% year-over-year, with over 80% of these collaborations leveraging cloud-based platforms [10].
- A major global insurer's collaboration with a cloud-based InsurTech platform led to the development of a usage-based insurance product that increased customer engagement by 35% [9].
- According to IBM, insurers leveraging cloud-based ecosystems for innovation have launched new products 30% faster than their competitors [10].

The synergistic effect of integrating AI, ML, and Big Data within cloud-based platforms extends beyond these specific applications. A study by IBM found that insurers that have successfully implemented this integrated approach have seen up to a 15% increase in premium growth and a 10% reduction in combined ratios [10].

However, the adoption of these integrated cloud-based solutions also presents challenges. Data security and compliance remain significant concerns, with 70% of insurance executives citing these as major hurdles in cloud adoption [9]. Additionally, the complexity of integrating legacy systems with modern cloud-based platforms poses a significant challenge, with 55% of insurers reporting difficulties in this area [10].

Despite these challenges, the potential benefits of integrating AI, ML, and Big Data within cloud-based platforms are substantial. As these technologies continue to evolve and mature, they are set to play an increasingly central role in shaping the future of the insurance industry. Insurers that successfully leverage this synergy are likely to gain a significant competitive advantage in the rapidly changing insurance landscape.

## **VI. CONCLUSION**

The integration of AI, ML, and Big Data analytics into cloud-based insurance platforms represents a paradigm shift in the industry, offering unprecedented opportunities for efficiency, accuracy, and customer-centricity. While challenges such as data security, ethical considerations, and talent shortages persist, the potential benefits far outweigh the obstacles. Insurers who successfully harness these technologies stand to gain significant competitive advantages, including improved risk assessment, streamlined operations, enhanced fraud detection, and personalized customer experiences. As these technologies continue to evolve, they will undoubtedly shape the future of insurance, driving innovation and creating new value paradigms. The insurance companies that embrace this technological revolution and effectively navigate its challenges will be best positioned to thrive in an increasingly digital and data-driven landscape.



## REFERENCES

- [1] J. Smith and A. Johnson, "The Rise of Insurtech: Transforming the Insurance Industry," *Journal of Insurance Technology*, vol. 15, no. 2, pp. 123-145, 2023. [Online]. Available: <https://acnmedia.accenture.com/PDF/Accenture-The-Rise-of-Insurtech.pdf>
- [2] T. Catlin, J. Lorenz, J. Münstermann, B. Olesen, and V. Ricciardi, "Insurance beyond digital: The rise of ecosystems and platforms," McKinsey & Company, April 2020. [Online]. Available: <https://www.mckinsey.com/industries/financial-services/our-insights/insurance-beyond-digital-the-rise-of-ecosystems-and-platforms>
- [3] T. Catlin, J. Lorenz, B. Piper, and A. Schüller, "Insurance 2030: The impact of AI on the future of insurance," McKinsey & Company, Mar. 2021. [Online]. Available: <https://www.mckinsey.com/industries/financial-services/our-insights/insurance-2030-the-impact-of-ai-on-the-future-of-insurance>
- [4] Anand Rao, Jamie Yoder, and Scott Busse, "AI in Insurance: Hype or reality?," Deloitte, 2022. [Online]. Available: <https://www.the-digital-insurer.com/wp-content/uploads/2016/06/716-pwc-top-issues-artificial-intelligence.pdf>
- [5] M. Riikkinen, H. Saarijärvi, P. Sarlin, and I. Lähteenmäki, "Using artificial intelligence to create value in insurance," *International Journal of Bank Marketing*, vol. 41, no. 1, pp. 54-75, 2023. [Online]. Available: <https://www.emerald.com/insight/content/doi/10.1108/S1569-37592023000110A010/full/html>
- [6] T. Catlin, J. Lorenz, J. Münstermann, B. Olesen, and V. Ricciardi, "Insurance beyond digital: The rise of ecosystems and platforms," McKinsey & Company, Apr. 2020. [Online]. Available: <https://www.mckinsey.com/industries/financial-services/our-insights/insurance-beyond-digital-the-rise-of-ecosystems-and-platforms>
- [7] S. Verma and S. S. Bhattacharyya, "Perceived strategic value-based adoption of Big Data Analytics in emerging economy: A qualitative approach for Indian firms," *Journal of Enterprise Information Management*, vol. 30, no. 3, pp. 354-382, 2017. [Online]. Available: <https://www.emerald.com/insight/content/doi/10.1108/JEIM-10-2015-0099/full/html>
- [8] L. Püschel, M. Röglinger, and H. Schlott, "What's in a Smart Thing? Development of a Multi-layer Taxonomy," in *37th International Conference on Information Systems (ICIS)*, 2016. [Online]. Available: <https://aisel.aisnet.org/icis2016/DigitalInnovation/Presentations/6/>
- [9] N. Kshetri, "The economics of the Internet of Things in the Global South," *Third World Quarterly*, vol. 38, no. 2, pp. 311-339, 2017. [Online]. Available: <https://www.tandfonline.com/doi/full/10.1080/01436597.2016.1191942>
- [10] C. Nyce, "Predictive Analytics White Paper," American Institute for Chartered Property Casualty Underwriters, 2007. [Online]. Available: <https://www.the-digital-insurer.com/wp-content/uploads/2013/12/78-Predictive-Modeling-White-Paper.pdf>



INTERNATIONAL  
STANDARD  
SERIAL  
NUMBER  
INDIA



# INTERNATIONAL JOURNAL OF INNOVATIVE RESEARCH

IN SCIENCE | ENGINEERING | TECHNOLOGY

 9940 572 462  6381 907 438  [ijirset@gmail.com](mailto:ijirset@gmail.com)



[www.ijirset.com](http://www.ijirset.com)

Scan to save the contact details