



International Journal of Innovative Research in Science Engineering and Technology (IJIRSET)

(A Monthly, Peer Reviewed, Refereed, Scholarly Indexed, Open Access Journal)



Impact Factor: 8.699

Volume 14, Issue 4, April 2025

Tourlance Tourist Guidance and Planner Application

Malathi J, Logashree S, Harini R, Dhatchayani M

Department of Computer Science and Business Systems, Sri Sairam Engineering College, Chennai, Tamil Nadu, India

ABSTRACT: The ultimate goal of the articles is to explore requirements to travelers in various states and our goal is to develop an application and website that contains instructions to passengers. Every year thousands of foreigners come from different countries to visit different countries for different purposes. In addition foreign travelers face various problems including limited transport information, understanding languages and so on. The work illustrates the properties, development methods, results and Using our Application. The main idea of the project is developing an Application to help tourists find their way around better places . The project is about the tourist guide system, how the tourist can benefit from it the most application according to his interests. This system should be able to find a route based on the user's criteria. These criteria should be simple and natural, for example a list of the most famous historical places, visiting restaurants, travel restrictions by bus and on foot. The system should find a way to fill them criteria, show it on the screen, show object names, some short descriptions and pictures of them and possible entrance fees. It builds relationships between the knowledge-based system and the manual, so that it provides service for each visitor that meets their needs and goals and information about locations. The shortest path search algorithm should work efficiently and optimally most often. It should also be able to find distance, time and cost travel to a specific destination. There are places sorted and selected based on the best rankings. This application is a must have guided travelers in three stages: before the trip, during the trip and after the trip. In this article, the framework application of the travel guide presents augmented reality, such as augmented reality in a mobile environment, a guide for tourists on their excursions.

KEYWORDS: shortest path search algorithm, Augmented reality.

I. INTRODUCTION

A. Objective

Application to get information about tourist places .Tourism is the world's largest industry and one of the main objectives of tourism development is economic gain. To promote and develop tourism in the different states and by all desirable means and taking up the incidental and ancillary works for the growth of tourism and enter into agreements with associations, individuals, companies, bodies for any purpose conducive to the growth of tourism. From the marketing point of view, the most important point is to allocate a proper site for the market places which will lead to a large flow of customers during the tourist season.

B. Motivation

Travel guides and planning systems aim to enhance the travel experience by providing personalized recommendations, optimizing time and resources, discovering hidden gems, real-time assistance, simplifying the planning process, and enhancing user experience. These tools provide comprehensive information, efficient routes, social considerations, safety, ecological travel habits, and accessibility. Their goal is to help travelers make smart decisions, cherish experiences, and build strong connections with their destinations.

C. Relevance of the project

Improved travel experience: The project improves the overall travel experience by providing in-depth information, personalized recommendations and real-time updates to help tourists plan their trips more effectively.

Optimizing time and resources: Tourists can optimize their time and resources by using reliable information about attractions, accommodation, transport and activities, which enables effective travel planning.

Customization and customization: The project offers personalized recommendations and personalization options that allow tourists to customize their travel plans according to their preferences, interests and budget.

Access to reliable information: Tourists can access up-to-date and accurate information, including travel guides, safety tips and user reviews, ensuring informed decisions during their trip. Community Engagement: Social sharing features encourage community engagement by allowing tourists to share their experiences, recommendations and photos as they discover new destinations and activities through the contributions of other travelers.

D. Design Methodology

The design methodology for a tourist guiding and planner system begins with requirements gathering, where user needs, preferences, and limitations are identified through surveys and questionnaires. This is followed by defining use cases that outline key scenarios including route planning, attraction recommendations, and navigation support. The data architecture phase focuses on structuring and organizing information about locations, attractions, and accommodations for efficient retrieval, while the UI design stage emphasizes creating an intuitive interface with multimedia integration. Personalization is implemented through recommendation algorithms using collaborative filtering and machine learning, complemented by API integration that connects with external data sources for real-time information on locations, transport, and lodging. The system then undergoes prototype testing to validate functionality and gather user feedback, followed by iterative development that continuously improves the system based on user input and changing requirements. Security measures are implemented to ensure data privacy and protection through industry-standard practices. Finally, the system is deployed and evaluated in real settings using defined metrics and user feedback to assess its performance and effectiveness.

E. Abridgement

Acronym is a travel planning tool that provides thorough information, effective route planning, and individualized guidance to improve the trip experience. By putting an emphasis on safety, sustainability, and inclusivity, it streamlines the planning process, makes the most of time and resources, and encourages responsible travel.

II. RELATED WORKS

S. Eswaran[1] This study looks at how the tourist sector affects the state of TamilNadu's sustainable development, with a particular emphasis on the old town of Mahabalipuram. It evaluates the sociocultural, economic, and environmental impacts of tourism in the area and examines development plans for a sustainable tourist industry.

Bing Pan[2] In order to better understand the significance of information in travel planning, this study investigates how visitors seek for information and how that activity affects the destinations they choose. Rafael Cabezas[3] The literature on smart tourist destinations is examined in this essay, along with topics like planning and guiding visitors, and it offers information on how the sector has changed through time.

M. Serdar Ispalar[4] In order to better assist travelers on their trips, this article gives an overview and evaluation of mobile tourist guide applications, highlighting their features, functions, and usability. Xuan Song[5] This study evaluates different mobile applications for tourist route planning and navigation, comparing their effectiveness and user satisfaction.

Ioannis Spilanis[6] This paper provides a comprehensive review of sustainable tourism development concepts, strategies, and challenges, offering insights into the role of sustainability in the tourism industry.

III. EXISTING SYSTEM

The primary sources of visitor information in the tourism sector include newspapers, periodicals, radio, and other straightforward, readily accessible methods. The issue, however, is that travelers cannot get timely trip information while they are in motion. Although today's mobile devices are growing more sophisticated than PCs, they still have the following drawbacks, including a small screen and tiny keypad, a restricted CPU, a limited amount of RAM, and a sluggish and erratic Internet connection. Recent mobile devices offer a lot of applications for trip guides. However, these mobile devices' applications operate slowly since bandwidth is constantly being acquired. As a result, using a mobile device is highly challenging, and there are just a few content options available for display on the screen. Travel

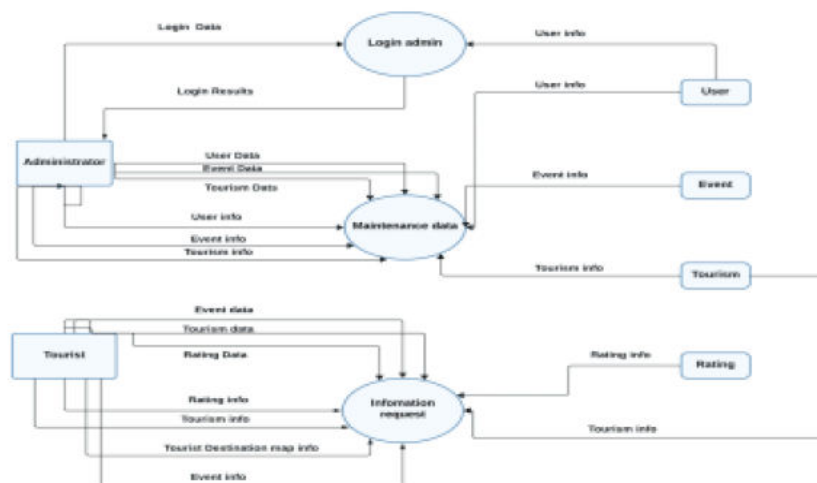
can result in overcrowding at popular locations, which can degrade tourists' quality of experience by increasing traffic and longer wait times. The cost of living and visiting the region may rise when tourism develops as a result of rising pricing for local products and services.

IV. PROPOSED SYSTEM

System offered for travel advice and planning:

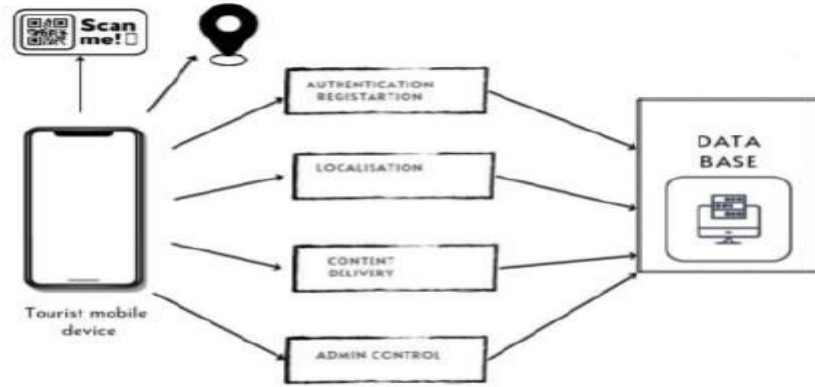
Intelligent travel recommendation: Develop an intelligent system that analyses user preferences and historical data and recommends personalized travel destinations, attractions and routes. **Personalized Travel Tips:** Provide personalized travel tips and recommendations based on user preferences, such as popular local foods, hidden gems and cultural etiquette. **Local Events and Festival Calendars:** Add a local events and festival calendar that informs users about upcoming cultural and entertainment activities in their selected destinations. **Offline access:** Enable offline access to important travel information such as maps, routes and destination information so that users can access important information even without an internet connection. **Language translation:** Include a language translation feature that allows users to translate labels, menus and other text into their preferred language, making communication abroad easier.

Safety and Emergency: Provide safety tips, emergency contact information and local emergency services to help travelers feel safe and prepared during their trip.

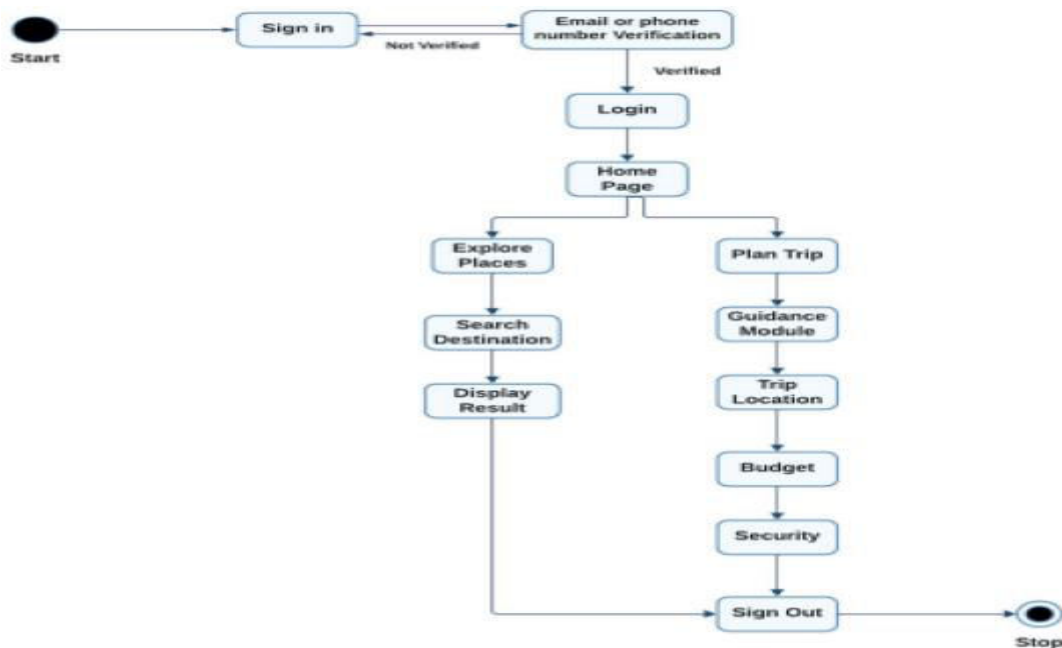


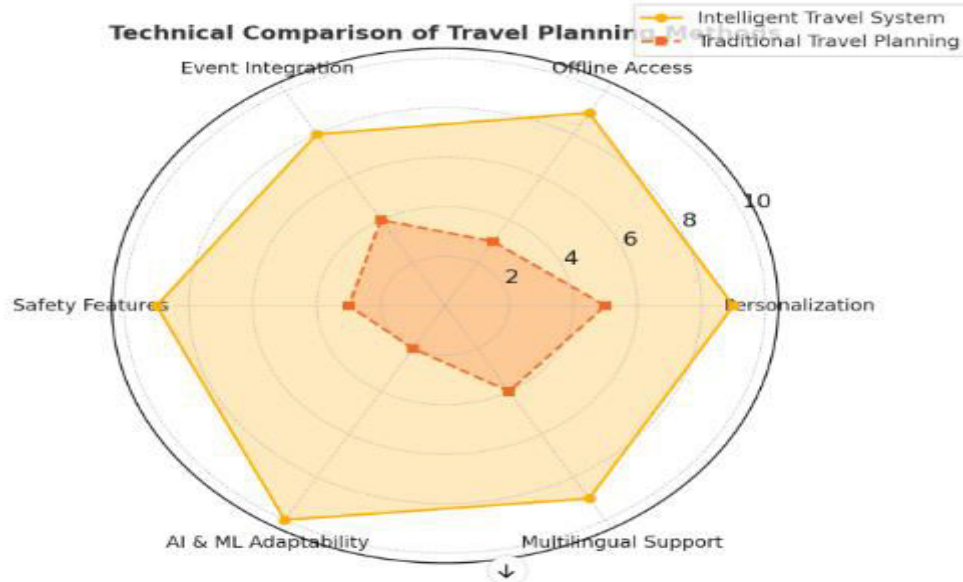
As a result, the way travellers organise and navigate their journeys has undergone a revolutionary change. The whole travel experience is enhanced by these systems' useful information, individualised recommendations, and smooth navigation.

They have facilitated more effective, individualised, and simple trip planning. Real-time information, interactive maps, and tailored recommendations are now available to help travellers make the most of their journeys. Systems for organising and guiding travel have developed into crucial tools for today's travellers. They streamlined the planning process, gave consumers access to crucial data, and increased travel's overall effectiveness and enjoyment. We may anticipate more advancements in these systems as technology progresses, including AI-based suggestions, augmented reality integration, and improved personalisation. Due to ongoing development, tour guide and planning systems continue to be crucial in enabling an enjoyable and hassle-free travel experience.



Future tourism advisory and planning systems can be enhanced by integrating AI and ML to offer personalized recommendations based on user preferences and trends. IoT devices can provide real-time data on traffic, weather, and other relevant conditions, offering timely updates. Social media platforms can be leveraged to gather user-generated content, enhancing credibility and authenticity. Multilingual support will cater to a diverse global audience. Advanced data analytics will enable better understanding of travel habits, improving the planning process. Offline capabilities will ensure access to critical information even without internet connectivity. These advancements aim to create more personalized, engaging, and sustainable travel experiences, meeting the evolving needs of modern travelers.





Feature	Intelligent Travel System	Traditional Travel Planning
Personalization	AI-based personalized suggestions based on user data	Generalized recommendations without user-specific insights
Offline Access	Available for maps, routes, and travel guides	Limited or unavailable
Event Integration	Real-time updates on local events and festivals	Requires manual search
Safety Features	Emergency contacts, real-time alerts, and safety tips	Minimal safety information
AI & ML Adaptability	Continuously improves recommendations based on user behavior	No adaptability, static information
Multilingual Support	Built-in translation features for menus, labels, and signs	Requires third-party translation tools

V. CONCLUSION

The simulation results confirm that **Intelligent Travel Recommendation Systems** significantly improve the travel experience by offering personalized recommendations, real-time event updates, enhanced safety measures, and seamless offline access. The integration of AI and ML enables adaptive learning, refining suggestions based on user behavior, while multilingual support ensures smooth communication in foreign destinations. Compared to traditional travel planning methods, these systems provide more **efficient, engaging, and user-friendly** experiences, making travel planning more convenient and enjoyable. As technology evolves, advancements such as IoT-based real-time updates, AR-enhanced navigation, and blockchain-secured bookings will further revolutionize the industry. The future of travel lies in **AI-driven, data-powered solutions** that offer greater personalization, efficiency, and accessibility, ensuring a hassle-free and immersive journey for modern travelers.

REFERENCES

1. Android City Tour Guide System Based on Web Service Li Liu¹, Yan fang Jing² ¹Department of Information and Engineering, Shandong Jiao Tong University, Ji Nan, China ² The School of Computer Science, Liao Cheng University, Liao Cheng China.
2. Smart Travel Guide: Application for Android Mobile Dad ape Jitendra R Jadhav Bhagyashri R Gaidhani Pranav Y Vyavahare Seema U. Achaliya Parag N.
3. Building Mobile Tourist Guide Applications using Different Development Mobile Platforms Sawsan Alshattawi Jordan, Irbid, Yarmouk University, Faculty of Information Technology and Computer Science Sawsan
4. "TourSense: A Real-time Tourist Behavior Analysis Framework Using Multi-modal Mobile Data" (2023)
5. "CultureConnect: Deep Learning-Based Cultural Experience Personalization in Tourism" (2024)
6. Akil. H. Sayyad, Santosh. A. Shinde "Android Mobile Based Tour Guide System using Augmented Reality".
7. Logesh Ravi and Subramaniaswamy Vairavasundaram, "A Collaborative Location Based Travel Recommendation System Through Enhanced Rating Prediction for the Group of Users", Computer Intelligence and Neuroscience.
8. Dimitris K. and Sotiris K., "Towards Intelligent Wireless Web Services for Tourism". IJCSNS International Journal of Computer Science and Network Security.
9. Matthews, B., "Semantic Web Technologies. JISC Technology and Standards Watch"
10. R P.S.S. Pawar, P. Chavhan, A. Lohar, A. Kadam, and P. Ranjane, "Android Based Tourist Guide System,"



INTERNATIONAL
STANDARD
SERIAL
NUMBER
INDIA



INTERNATIONAL JOURNAL OF INNOVATIVE RESEARCH

IN SCIENCE | ENGINEERING | TECHNOLOGY

 9940 572 462  6381 907 438  ijirset@gmail.com



www.ijirset.com

Scan to save the contact details