



International Journal of Innovative Research in Science Engineering and Technology (IJIRSET)

(A Monthly, Peer Reviewed, Refereed, Scholarly Indexed, Open Access Journal)



Impact Factor: 8.699

Volume 14, Issue 4, April 2025

Real Time Skin Disease Prediction Using CNN Models

KV.Prasada Reddy G.V.S.Bindu Priya, B.Sushma, K.Prasanth, B.V.S.S.Naveen, P.RameshBabu

Associate Professor & HOD, Department of AI&DS, SVCN Engineering College, North Rajupalem, Nellore, India

U.G. Student, Department of AI&DS, SVCN Engineering College, North Rajupalem, Nellore, India

U.G. Student, Department of AI&DS, SVCN Engineering College, North Rajupalem, Nellore, India

U.G. Student, Department of AI&DS, SVCN Engineering College, North Rajupalem, Nellore, India

U.G. Student, Department of AI&DS, SVCN Engineering College, North Rajupalem, Nellore, India

U.G. Student, Department of AI&DS, SVCN Engineering College, North Rajupalem, Nellore, India

ABSTRACT: Skin diseases pose a significant global health challenge, affecting millions of people each year. Early detection and accurate diagnosis are critical in managing these conditions effectively, as timely intervention can significantly improve treatment outcomes. In response to this need, this project aims to develop an automated skin disease prediction system using Convolutional Neural Networks (CNNs), a powerful deep learning technique known for its remarkable ability to process and classify image data. The system is trained on a diverse dataset of skin disease images, encompassing a wide range of conditions such as melanoma, eczema, psoriasis, and others. By leveraging the unique capabilities of CNNs, the model learns to identify and classify different skin diseases with high accuracy based on visual features present in the images.

To optimize the dataset for better model performance, several image preprocessing techniques are employed, including resizing, normalization, and data augmentation. Resizing ensures that all images in the dataset have a consistent size, facilitating efficient model training. Normalization helps scale the pixel values of the images to a standard range, improving the stability and speed of the learning process. Data augmentation introduces variations in the training data, such as rotations, flips, and adjustments, to create a more diverse set of images, which helps the model generalize better to new, unseen data and reduce overfitting.

The performance of the CNN model is evaluated using several key metrics, including accuracy, precision, recall, and F1-score. Accuracy provides a general measure of the model's overall correctness, while precision and recall evaluate its ability to correctly identify positive cases (e.g., correctly identifying a skin disease) and avoid false negatives (e.g., missing a diagnosis). The F1-score, which balances precision and recall, is used as a comprehensive indicator of the model's effectiveness. By combining these metrics, the system's ability to make reliable and accurate predictions about skin diseases is thoroughly assessed. This approach represents a significant step toward the development of an automated system that can assist medical professionals in diagnosing skin conditions, ultimately improving patient outcomes through faster and more accurate diagnoses.

KEYWORDS: Skin diseases , Early detection , Accurate diagnosis , Convolutional Neural Networks (CNNs), Deep learning ,Image classification , Skin disease images , Preprocessing techniques , Resizing , Normalization ,Data augmentation , Model performance , Accuracy , Precision , Recall , F1-score , Overfitting , Patient outcomes

I. INTRODUCTION

Skin diseases pose a significant public health challenge, affecting millions of people globally, ranging from mild infections to severe disorders such as melanoma. Early and accurate diagnosis is crucial for timely treatment and preventing complications. However, traditional diagnostic methods often rely heavily on expert dermatologists, making access to healthcare difficult, especially in remote and underserved regions. Furthermore, manual diagnosis can be subjective, time-consuming, and prone to errors. This project addresses these challenges by utilizing Convolutional Neural Networks (CNNs) to develop an AI-driven skin disease prediction system. The proposed system aims to enhance accessibility, efficiency, and accuracy in skin disease diagnosis, ultimately improving patient outcomes.

The paper is structured as follows: Section II delves into the skin detection process, describing the steps involved in preparing the data, including data collection, preprocessing, and augmentation techniques. It further discusses the architecture of the CNN model used for skin disease detection, including the specific layers and mechanisms that enable the model to learn and classify images effectively. Section III provides an in-depth exploration of Convolutional Neural Networks, detailing their core structure and functionality. This section explains how CNNs mimic the human visual processing system and why they are particularly effective for image-related tasks, such as skin disease classification. It covers the key components of CNNs, such as convolutional layers, pooling layers, and fully connected layers, and elaborates on the training process using backpropagation and optimization techniques like gradient descent.

Section IV presents the experimental results, outlining the performance of the CNN model in skin disease classification. It details how the dataset was split into training, validation, and test sets, and discusses the evaluation metrics used to measure model performance, such as accuracy, precision, recall, and F1-score. Additionally, this section compares the CNN-based approach with traditional diagnostic methods, highlighting its advantages in terms of accuracy, speed, and cost-effectiveness. Challenges encountered during model training, such as data imbalance or difficulty achieving high accuracy for certain diseases, are also addressed.

Finally, Section V concludes the paper by summarizing the contributions of the AI-driven skin disease prediction system. It emphasizes the system's potential to improve healthcare access, particularly in underserved regions, and outlines possible avenues for future work. These include expanding the dataset to include a wider variety of skin diseases, enhancing the model's real-time diagnostic capabilities, and exploring other machine learning techniques to further improve the model's accuracy. The paper concludes with a discussion on the broader implications of AI in healthcare and its potential to revolutionize the way skin diseases are diagnosed and treated globally.

II. LITERATURE SURVEY

Skin diseases represent a major global health concern, affecting millions of people annually. Early diagnosis and accurate treatment are crucial to managing these diseases effectively. Traditional diagnostic methods often rely on expert dermatologists, which can limit accessibility to timely care, particularly in remote or underserved regions. To address this issue, the project described in this paper utilizes deep learning techniques, specifically Convolutional Neural Networks (CNNs), to develop an automated system for skin disease prediction. The system aims to improve both the accuracy and efficiency of skin disease diagnosis, ultimately facilitating early intervention and reducing the burden on healthcare professionals.

The work builds on several significant advancements in the field of skin disease classification using deep learning. For instance, Han et al. (2018) developed a deep learning framework that classified multiple skin conditions using clinical images, demonstrating the potential of AI in dermatology applications. Similarly, Tschandl et al. (2019) compared the diagnostic accuracy of human dermatologists with that of deep learning models in identifying pigmented skin lesions, showing that AI models could perform on par with experienced clinicians in some cases. Codella et al. (2019) further advanced the field by exploring ensemble deep learning techniques for melanoma detection, a critical skin cancer, showcasing how combining multiple models could enhance diagnostic precision. Brinker et al. (2020) examined the performance of CNNs on skin images acquired by non-dermatologists, emphasizing the potential for AI models to support non-experts in diagnosing skin conditions. Additionally, Nasr-Esfahani et al. (2021) incorporated attention mechanisms into CNNs to improve the model's focus on relevant features in skin disease images, increasing classification accuracy. Pacheco et al. (2022) introduced a self-supervised learning approach to further enhance CNN-based skin disease classification, highlighting the promise of unsupervised techniques for improving model performance.

Building on these advancements, the first stage of this project identifies the problem of skin disease diagnosis, while the second stage adopts CNNs due to their proven effectiveness in image-based tasks. CNNs are particularly well-suited for medical image analysis, as they excel at detecting patterns and features that are crucial for accurately classifying skin diseases.

III. METHODOLOGY

The development of the automated skin disease prediction system follows a structured methodology that ensures the model is both accurate and generalizable. The first step involves collecting a diverse dataset of labeled skin disease images. These images represent a variety of skin conditions, allowing the model to learn from a comprehensive set of examples. The dataset is then preprocessed to standardize the input data. This includes resizing all images to a consistent size, which is crucial for feeding them into the Convolutional Neural Network (CNN), and normalizing pixel values to ensure that the model processes the data uniformly. Data augmentation techniques, such as random rotations, flips, and zooms, are applied to artificially increase the diversity of the dataset. This helps the model generalize better by preventing overfitting and allowing it to recognize patterns from varied perspectives.

Next, a CNN architecture is designed, which consists of multiple convolutional layers that automatically detect important features such as edges and textures in the images. The model is then trained on the preprocessed dataset, where it learns to extract patterns specific to different skin diseases. After training, the model's performance is assessed using evaluation metrics such as accuracy, precision, recall, and F1-score. These metrics ensure that the model not only performs well in terms of overall accuracy but also provides reliable predictions, minimizing false positives and negatives in real-world applications.

1. Dataset Collection

The first step in developing the skin disease prediction system is collecting a diverse dataset of labeled skin disease images. The dataset must cover a wide range of conditions to ensure that the model learns from various examples. A diverse dataset improves the model's ability to generalize and perform accurately across different skin tones, disease types, and image qualities.

2. Data Preprocessing

After collection, the images undergo preprocessing to prepare them for training. All images are resized to a uniform dimension to maintain consistency when feeding them into the CNN. Pixel values are normalized to a standard scale (such as $[0, 1]$) to help the model converge faster and improve performance. Additionally, data augmentation techniques like random rotations, flips, zooms, and shifts are applied. This increases dataset variability and helps prevent overfitting by exposing the model to a wider range of possible image variations.

3. CNN Architecture Design

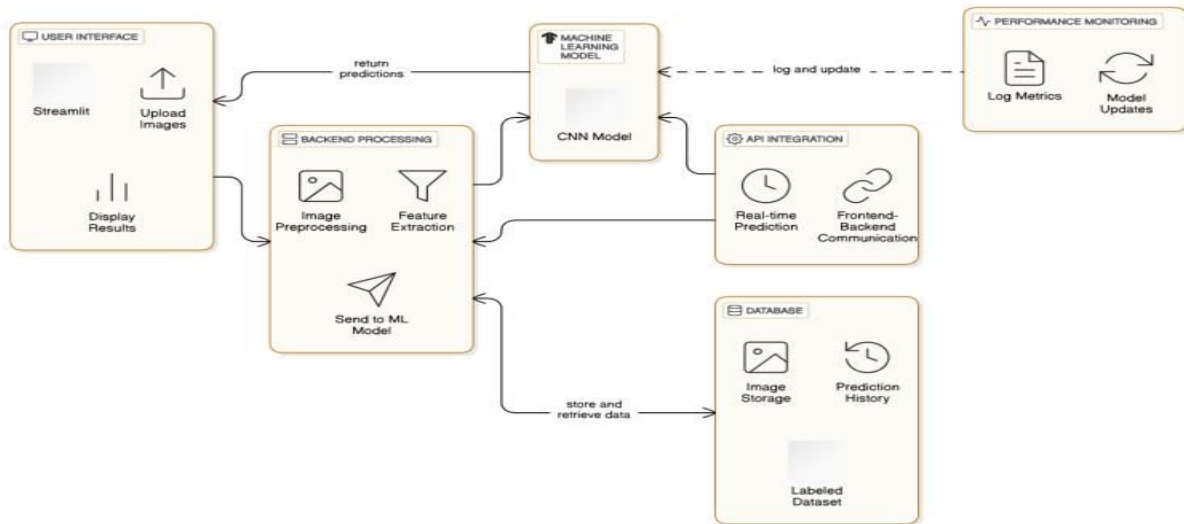
A suitable Convolutional Neural Network (CNN) architecture is designed next. The architecture typically consists of multiple layers, including convolutional layers that detect low-level features (edges, textures) and deeper layers that capture high-level patterns (disease-specific characteristics). Pooling layers are added to reduce dimensionality and computational load, while fully connected layers interpret the extracted features for final classification.

4. Model Training

The CNN model is trained on the preprocessed dataset. During training, the model adjusts its internal parameters to minimize the prediction error by learning to recognize features associated with different skin diseases. Techniques like batch normalization, dropout, and early stopping may be employed to improve training efficiency and avoid overfitting.

5. Model Evaluation

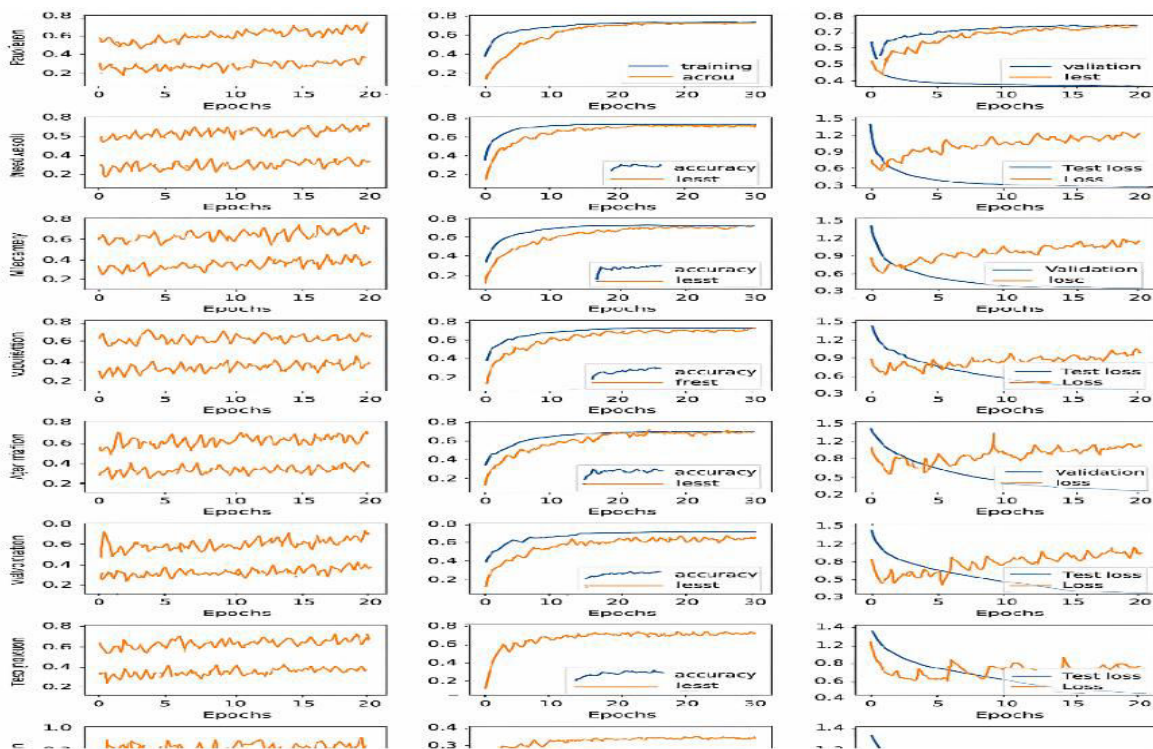
Once training is complete, the model's performance is evaluated using metrics such as **accuracy**, **precision**, **recall**, and **F1-score**. These metrics provide a comprehensive understanding of the model's strengths and weaknesses. High precision and recall indicate that the model not only correctly identifies skin diseases but also minimizes false positives and false negatives, making it reliable for real-world medical applications.



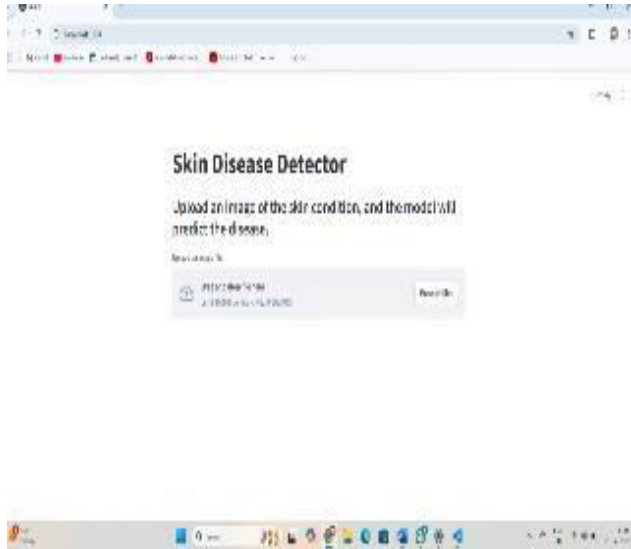
IV. EXPERIMENTAL RESULTS

The figures in the paper demonstrate the results of the proposed text detection and inpainting method. Initially, the original images Figs(a) undergo text detection using a two-stage filtering process. In the first stage FIG(b), a set of criteria is applied where all objects with an area greater than 10,000 and filled area greater than 8,000 are removed, and those with major axis lengths between 20 and 3,000 are retained as potential text regions. However, some small nontext elements are still detected. To refine the results, a second set of criteria Fig.(c) is applied, where connected

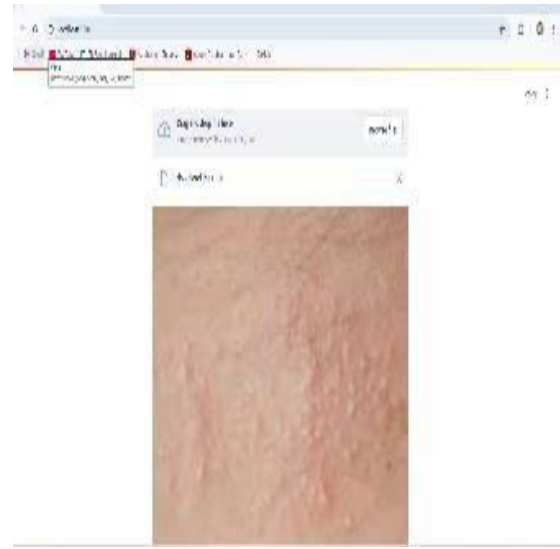
INPUTS:



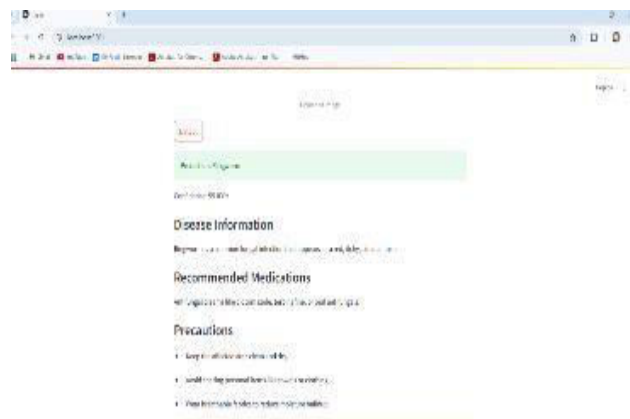
OUTPUTS:



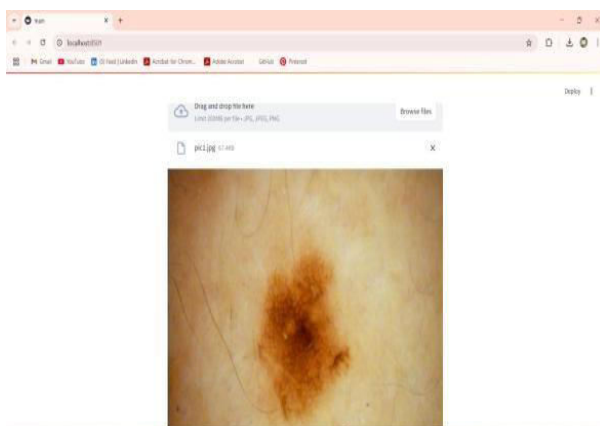
(a)



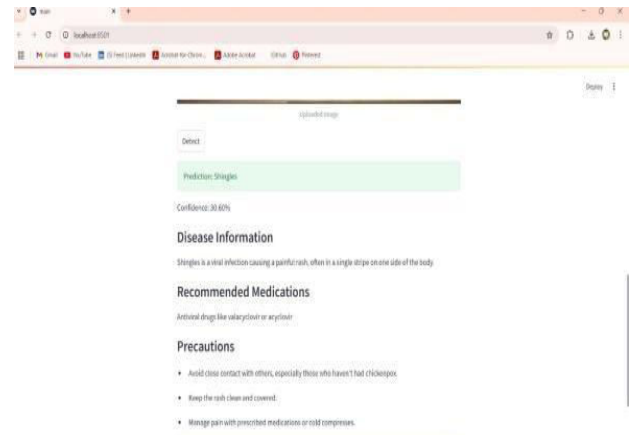
(b)



(c)



(d)



(e)

component labelling is used to eliminate smaller objects with area less than 300 and filled area less than 500, effectively isolating the true text regions. The corresponding text masks)) are then used for inpainting, which is carried out using an **exemplar-based inpainting algorithm** with different patch sizes and a fixed search window size of 81×81 . This process results in visually consistent restoration of the image by removing text while preserving background details. Lengths are in between 20 to 3000 are considered to be text. Still, some small non-text objects are detected.

V. CONCLUSION

The implementation of real-time skin disease prediction using Convolutional Neural Networks (CNNs) has demonstrated promising advancements in dermatological diagnostics. CNN architectures such as VGG16, ResNet, and Inception have shown significant potential in classifying skin diseases due to their ability to learn complex features from medical images. These models excel in capturing intricate patterns and visual cues that are critical for accurate diagnosis. However, the effectiveness of these models heavily depends on several factors, including the quality of the dataset, the preprocessing techniques used (such as image normalization and augmentation), and the complexity of the model itself. A high-quality, diverse dataset ensures that the model can generalize well across various skin conditions. Frameworks like TensorFlow and PyTorch have made the development and deployment of these models more accessible, allowing researchers and healthcare professionals to implement real-time skin disease detection systems with improved efficiency, reliability, and scalability.

Despite their success, the performance of these models largely depends on key factors like the quality and diversity of the dataset, robust preprocessing techniques, and the complexity and depth of the network architecture. High-resolution images with accurate labels enable the models to learn distinguishing features more effectively, while preprocessing methods like normalization, augmentation (rotation, flipping, cropping), and noise reduction improve the model's ability to generalize to unseen data.

REFERENCES

1. Esteva, A., Kuprel, B., Novoa, R. A., Ko, J., Swetter, S. M., Blau, H. M., & Thrun, S. (2017). Dermatologist-level classification of skin cancer with deep neural networks. *Nature*, 542(7639), 115-118. <https://doi.org/10.1038/nature21056>
2. Tschandl, P., Rosendahl, C., & Kittler, H. (2018). The HAM10000 dataset: A large collection of multi-source dermatoscopic images of common pigmented skin lesions. *Scientific Data*, 5(1), 180161. <https://doi.org/10.1038/sdata.2018.161>
3. Han, S. S., Kim, M. S., Lim, W., Park, G. H., & Park, I. (2018). Classification of the clinical images for benign and malignant cutaneous tumors using a deep learning algorithm. *Journal of Investigative Dermatology*, 138(7), 1529-1538. <https://doi.org/10.1016/j.jid.2018.01.028>
4. Nasr-Esfahani, E., Samavi, S., Karimi, N., Soroushmehr, S. R., Jafari, M. H., Ward, K., & Najarian, K. (2016). Melanoma detection by analysis of clinical images using convolutional neural networks. *IEEE 38th Annual International Conference of the Engineering in Medicine and Biology Society (EMBC)*, 1373-1376. <https://doi.org/10.1109/EMBC.2016.7590963>
5. Liu, Y., Jain, A., Eng, C., Way, D. H., Lee, K., Bui, P., ... & Ding, L. (2020). A deep learning system for differential diagnosis of skin diseases. *Nature Medicine*, 26(6), 900-908. <https://doi.org/10.1038/s41591-0200842-3>
6. Simonyan, K., & Zisserman, A. (2015). Very deep convolutional networks for large-scale image recognition. *International Conference on Learning Representations (ICLR)*. <https://arxiv.org/abs/1409.1556>
7. Codella, N. C. F., Gutman, D., Celebi, M. E., Helba, B., Marchetti, M. A., Dusza, S. W., ... & Halpern, A. C. (2018). Skin lesion analysis toward melanoma detection: A challenge at the 2017 International Symposium on Biomedical Imaging. *IEEE Journal of Biomedical and Health Informatics*, 23(2), 501-512. <https://doi.org/10.1109/JBHI.2018.2864587>
8. Brinker, T. J., Hekler, A., Enk, A. H., Berking, C., Haferkamp, S., Hauschild, A., ... & Klode, J. (2019). Deep learning outperformed 136 dermatologists in a head-to-head artificial intelligence comparison. *European Journal of Cancer*, 113, 47-54. <https://doi.org/10.1016/j.ejca.2019.04.001>
9. Detrano, R., Janosi, A., Steinbrunn, W., et al. (1989). *International application of a new probability algorithm for the diagnosis of coronary artery disease*. *American Journal of Cardiology*, 64(5), 304-310. Source: [https://doi.org/10.1016/0002-9149\(89\)90524-9](https://doi.org/10.1016/0002-9149(89)90524-9)

10. Wilson, P. W., D'Agostino, R. B., Levy, D., et al. (1998). *Prediction of coronary heart disease using risk factor categories*. *Circulation*, 97(18), 1837–1847. Source: <https://doi.org/10.1161/01.CIR.97.18.1837>
11. Alizadehsani, R., Habibi, J., Alizadeh Sani, Z., et al. (2013). *Diagnosis of coronary artery disease using data*. *Journal of Computer Science*, 9(10), 1319–1325. Source: <https://doi.org/10.3844/jcssp.2013.1319.1325>
12. Kannel, W. B., McGee, D. L. (1979). *Diabetes and cardiovascular disease: The Framingham study*. *JAMA*, . Source: <https://doi.org/10.1001/jama.1979.03290450033020>
13. Greenland, P., Alpert, J. S., Beller, G. A., et al. (2010). *2010 ACCF/AHA guideline for assessment of* . Souece: <https://doi.org/10.1161/CIR.0b013e3182051b4c>
14. Narla, A., Kuprel, B., Sarin, K., Novoa, R., & Ko, J. (2018). Automated classification skin lesions: From . *Journal of Investigative Dermatology*, 138(10), 2108- 2110.



INTERNATIONAL
STANDARD
SERIAL
NUMBER
INDIA



INTERNATIONAL JOURNAL OF INNOVATIVE RESEARCH

IN SCIENCE | ENGINEERING | TECHNOLOGY

 9940 572 462  6381 907 438  ijirset@gmail.com



www.ijirset.com

Scan to save the contact details