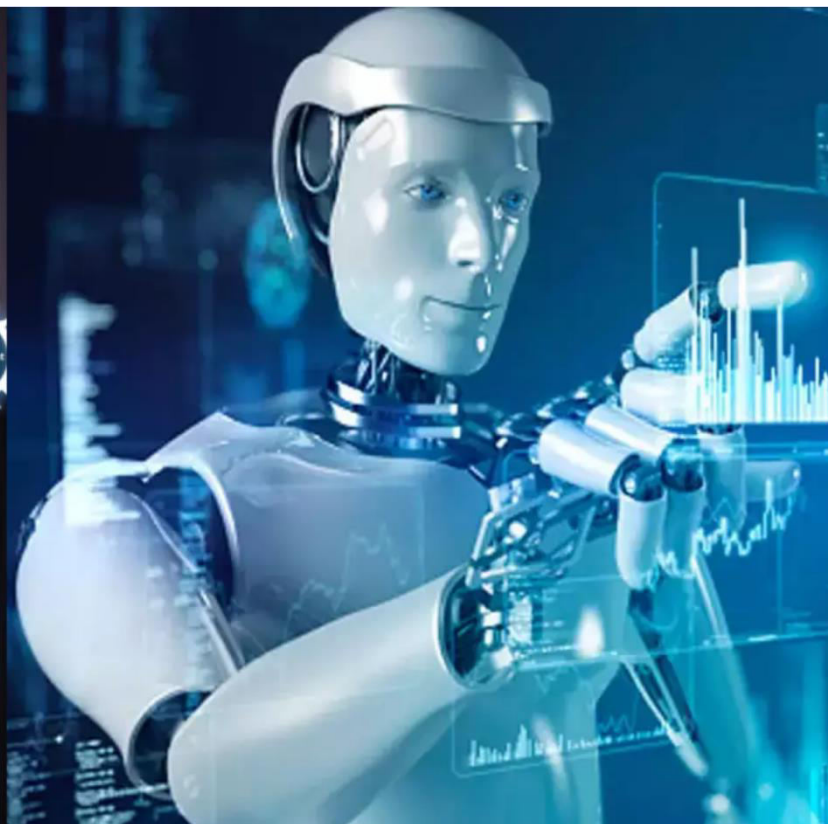




International Journal of Innovative Research in Science Engineering and Technology (IJIRSET)

(A Monthly, Peer Reviewed, Refereed, Scholarly Indexed, Open Access Journal)



Impact Factor: 8.699

Volume 14, Issue 4, April 2025

Deep Learning-Based Bone Deformity Detection in Radiological Imaging

Nivethitha R, Siva Prakash Pandi J, Sriram V, Subash R, Vimal Raj K

Assistant Professor and Faculty Mentor, Dept. of Computer Science and Engineering, KLN College of Engineering,
Madurai, Tamil Nadu, India

B.E Students, Dept. of Computer Science and Engineering, KLN College of Engineering, Madurai, Tamil Nadu, India

ABSTRACT: Bone deformity detection is a crucial aspect of medical diagnostics, aimed at identifying skeletal abnormalities such as fractures, scoliosis, and osteoporosis. However, the high variability in bone structures and imaging conditions poses challenges, leading to misdiagnoses and increased dependency on expert interpretation. This study focuses on deep learning-based automated detection, leveraging Convolutional Neural Networks (CNNs) to analyze medical images and accurately classify bone deformities. The system employs a CNN-based model trained on a large dataset of annotated medical images to extract features and detect abnormalities with high precision. Additionally, image preprocessing techniques are applied to enhance image quality, ensuring better feature recognition. This approach improves diagnostic accuracy, reduces human error, and speeds up the detection process, making it suitable for real-time medical applications, including radiology, orthopedic diagnostics, and AI-assisted healthcare.

KEYWORDS: Bone Deformity Detection, Deep Learning, CNN, Medical Imaging, AI in Healthcare.

I. INTRODUCTION

Bone is a structurally rigid tissue primarily composed of collagen, forming a soft framework strengthened by minerals like hydroxyapatite. The adult human skeleton comprises 206 bones—80 axial and 126 appendicular. Bone tissue is classified into three types: compact (outer), cancellous (spongy), and subchondral (smooth tissue at bone ends). In addition to collagen, osteoid proteins such as glycoprotein and osteocalcin, secreted by osteoblasts, contribute to bone structure, while osteoclasts are vital for bone healing and remodeling. Functionally, bones support the musculoskeletal system, enabling movement, protecting internal organs, and facilitating blood cell formation. Due to the heterogeneous structure and essential role of bones, accurate detection of deformities, fractures, or misalignments is crucial for treatment. Fractures—partial or complete bone breaks—can result from trauma, overuse, osteoporosis, high-impact injuries, genetic disorders like osteogenesis imperfecta, chronic diseases such as diabetes, or age-related loss of bone mineral density.

II. LITERATURE SURVEY

Accurate analysis of medical CT images is essential for proper diagnosis in clinical cases, especially in sports-related tear injuries. Feature extraction from CT images plays a key role in improving diagnostic accuracy. One study introduced a specialized algorithm to enhance and extract features from CT images of sports injuries. The method first uses wavelet fast decomposition to break down CT images into low and high-frequency components. Then, a wavelet-based enhancement technique improves both high- and low-frequency image details, allowing better visibility of injury features at multiple scales. After enhancement, an edge detection method using extended mathematical morphology highlights important structures. Finally, the NSCT-GLCM algorithm is applied to extract detailed features based on the edges. This multi-step approach significantly improves the clarity and usefulness of CT images for identifying sports tear injuries, providing doctors with valuable information to support clinical diagnosis.

III. METHODOLOGY

3.1 Data Collection and Annotation

A comprehensive dataset of medical CT images is curated from publicly available repositories and partner hospitals. Each image is manually annotated by medical professionals to ensure accuracy in identifying deformities. The dataset includes varied patient profiles and imaging conditions to enhance model robustness. These annotations form the ground truth for training and validating the deep learning model, enabling it to recognize different bone-related abnormalities such as fractures, scoliosis, and osteoporosis with high precision.

3.2 Image Preprocessing Techniques

To improve input image quality, preprocessing steps are employed such as Gaussian denoising filters, histogram equalization for contrast enhancement, and region-based segmentation. These techniques help in reducing noise and artifacts while highlighting important anatomical features. Proper preprocessing ensures that the model receives clean, high-quality data, which improves learning efficiency and diagnostic accuracy. This step is crucial for eliminating irrelevant details and focusing on clinically significant structures in CT scans.

3.3 Deep Learning Model Design

The core of the system is built using Convolutional Neural Networks (CNNs), with ResNet and DenseNet architectures integrated for their efficiency in handling deep and complex data. These models automatically learn spatial and textural patterns across multiple layers, enabling them to detect subtle bone deformities. Transfer learning and fine-tuning techniques are applied to adapt pre-trained models to the specific medical dataset. The architecture is optimized for both classification and localization of abnormalities in CT images.

3.4 Model Training and Optimization

The deep learning model is trained using annotated datasets with techniques like batch normalization, dropout, and learning rate scheduling to prevent overfitting and ensure stable convergence. Data augmentation is applied to increase dataset diversity and generalizability. Cross-validation and hyperparameter tuning are employed to refine model performance. Key evaluation metrics such as accuracy, precision, recall, F1-score, and AUC are used to measure diagnostic effectiveness and optimize the model accordingly.

3.5 Clinical Integration and Benefits

The trained model is designed for seamless integration into hospital imaging systems. It provides real-time, automated diagnostic support to radiologists, reducing manual effort and minimizing diagnostic errors. The system ensures consistent and objective assessments across diverse cases, aiding in early detection and treatment planning. By supporting clinical decision-making, the model enhances patient care and contributes to more efficient workflow management in medical imaging departments, ultimately improving healthcare delivery.

IV. SYSTEM ARCHITECTURE

The architecture processes a bone fracture dataset through pre-processing (augmentation, equalization, filtering). Segmentation is performed using Dilated Mask RCNN with RKF and RFF. Features are extracted from the backbone and combined with features from the segmented image (LBP, HOG, SURF). Finally, a Self Attention Recurrent Neural Network (SA-RNN) performs classification to detect bone fractures.

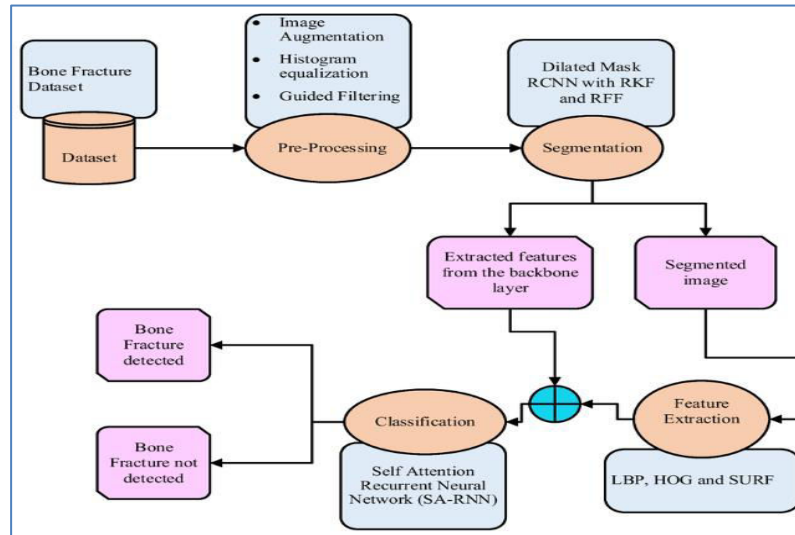


Figure -1: Architecture Diagram

4.1 Bone Fracture Dataset

A collection of medical images (likely X-rays) containing both fractured and non-fractured bone examples. This dataset is the fundamental input for training and evaluation.

4.2 Pre-Processing

Enhances image quality using augmentation, histogram equalization, and guided filtering. These steps prepare the images for accurate segmentation and feature extraction.

4.3 Segmentation

Precisely identifies and delineates the bone region using Dilated Mask RCNN with RKF and RFF for accurate pixel-level bone localization.

4.4 Feature Extraction (from Backbone Layer)

The segmentation model's convolutional layers automatically learn hierarchical visual features relevant to identifying bones and potential fracture patterns.

4.5 Feature Extraction (from Segmented Image)

Extracts classical image features like LBP, HOG, and SURF from the segmented bone regions, capturing texture, gradient, and keypoint information.

4.6 Feature Fusion

Combines the deep learned features from the backbone and the handcrafted features from the segmented image to create a comprehensive.

V. OUTPUT



Figure -2:Hand X-ray Classification Result Indicating a Fractured Bone

The system successfully analyzed the uploaded X-ray image. It detected a hand and identified the condition as Fractured, providing a clear result for diagnosis and further medical action.

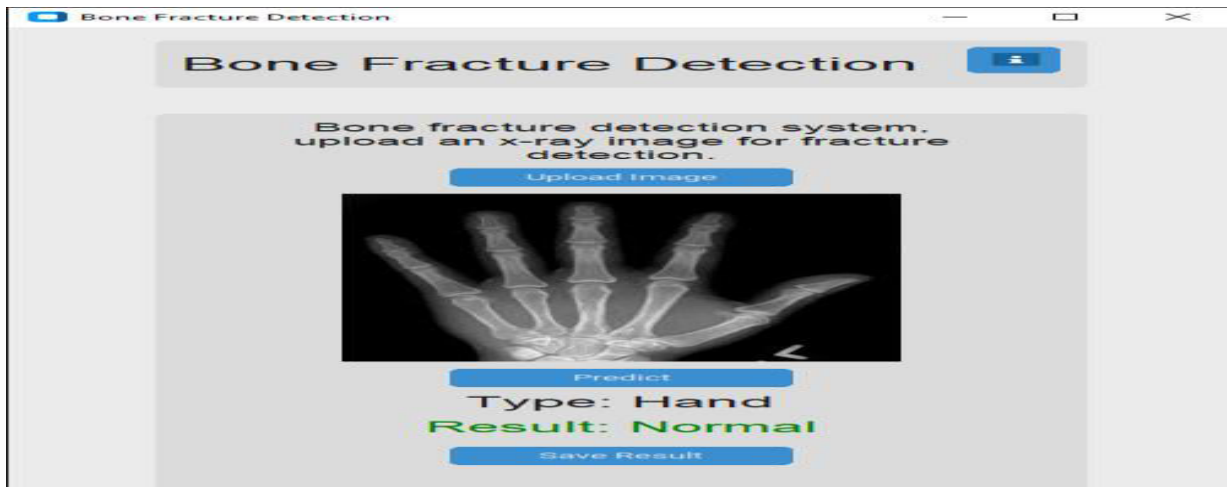


Figure -3:Hand X-ray Classification Result Indicating a Normal Bone

The system analyzed the uploaded X-ray image and identified the bone type as Hand. The detection result shows Normal, indicating no visible fracture or deformity in the examined region.

VI. CONCLUSION

In conclusion, the integration of deep learning, particularly CNNs, into bone deformity detection presents a transformative step in medical diagnostics. The proposed system demonstrates high accuracy, precision, and recall, effectively reducing human error and accelerating the diagnostic workflow. By automating the analysis of medical images, it enhances decision-making for healthcare professionals and contributes to improved patient outcomes. Future enhancements, including real-time processing, multi-modal imaging integration, and cloud-based access, can further expand its clinical utility. This research underscores the growing potential of AI in medical imaging and advocates for ongoing innovation to support early, accurate diagnosis and better healthcare delivery.

REFERENCES

- [1] Rajpurkar, P., Irvin, J., Zhu, K., Yang, B., Mehta, H., Duan, T., & Ng, A. Y. (2018). Deep learning for chest radiograph diagnosis: A retrospective comparison of the CheXNeXt algorithm to practicing radiologists. *PLoS Medicine*, 15(11), e1002686.
- [2] Litjens, G., Kooi, T., Bejnordi, B. E., Setio, A. A. A., Ciompi, F., Ghafoorian, M., & van der Laak, J. A. (2017). A survey on deep learning in medical image analysis. *Medical Image Analysis*, 42, 60-88.
- [3] Chen, H., Zhang, Y., Zhang, W., Liao, P., Li, K., Zhou, J., & Wang, G. (2019). LEARN: Learnable adversarial reconstruction network for under-sampled medical image reconstruction. *IEEE Transactions on Medical Imaging*, 38(12), 2795-2806.
- [4] Zhou, Z., Shin, J., Zhang, J., Gurudu, S. R., Gotway, M. B., & Liang, J. (2019). Fine-tuning convolutional neural networks for biomedical image analysis: actively and incrementally. *Medical Image Analysis*, 58, 101837.
- [5] Pulivarthy, P., & Infrastructure, I. T. (2023). Enhancing Database Query Efficiency: AI-Driven NLP Integration in Oracle. *Trans. Latest Trends Artif. Intell.*, 4(4).
- [6] Esteva, A., Kuprel, B., Novoa, R. A., Ko, J., Swetter, S. M., Blau, H. M., & Thrun, S. (2017). Dermatologist-level classification of skin cancer with deep neural networks. *Nature*, 542(7639), 115-118.
- [7] Zhang, Y., Yu, F., Wang, L., Wang, Q., Song, J., & Zhang, X. (2020). Bone fracture detection using deep learning-based object detection. *Journal of Healthcare Engineering*, 2020, 1-9.
- [8] He, K., Zhang, X., Ren, S., & Sun, J. (2016). Deep residual learning for image recognition. *Proceedings of the IEEE Conference on Computer Vision and Pattern Recognition (CVPR)*, 770-778.
- [9] Ronneberger, O., Fischer, P., & Brox, T. (2015). U-Net: Convolutional networks for biomedical image segmentation. *International Conference on Medical Image Computing and Computer-Assisted Intervention (MICCAI)*, 234-241.
- [10] Sudarshan, V. K., Thakur, B., & Ghosh, S. (2021). Automated detection of orthopedic fractures using deep convolutional neural networks. *IEEE Access*, 9, 41724-41734.
- [11] Awan, R., Saeed, M. I., & Ali, M. (2022). Deep learning-based automated detection of bone fractures in X-ray images. *Computerized Medical Imaging and Graphics*, 97, 102049.



INTERNATIONAL
STANDARD
SERIAL
NUMBER
INDIA



INTERNATIONAL JOURNAL OF INNOVATIVE RESEARCH

IN SCIENCE | ENGINEERING | TECHNOLOGY

 9940 572 462  6381 907 438  ijirset@gmail.com



www.ijirset.com

Scan to save the contact details