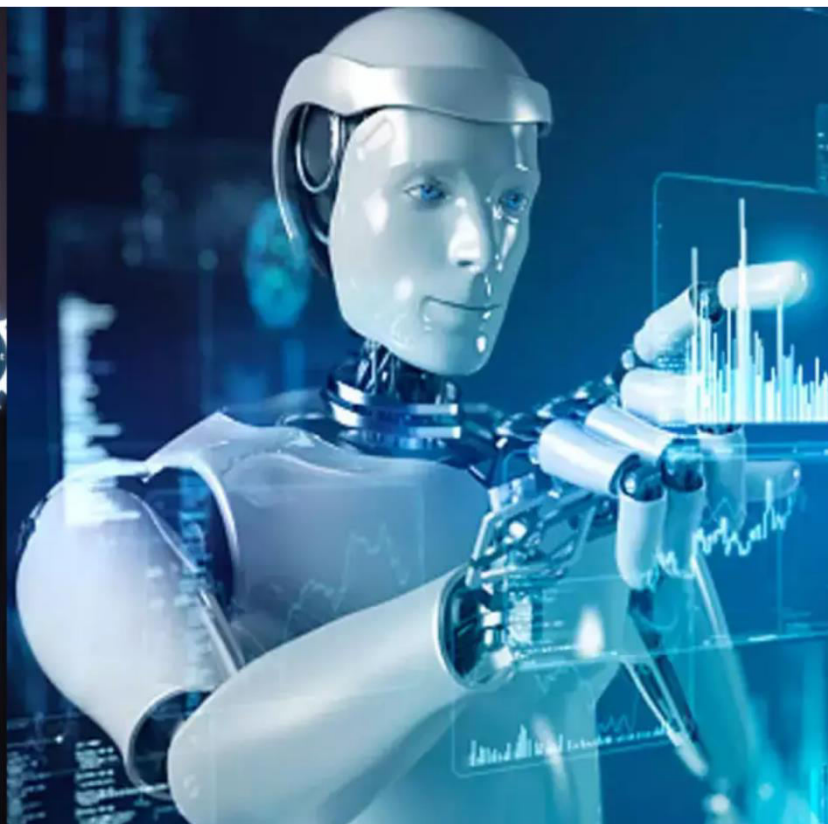




International Journal of Innovative Research in Science Engineering and Technology (IJIRSET)

(A Monthly, Peer Reviewed, Refereed, Scholarly Indexed, Open Access Journal)



Impact Factor: 8.699

Volume 14, Issue 4, April 2025

SpectraLearn Personalized Learning Solutions for Children with Autism

S.Sarjun Beevi, T.Raghavendhar, M.Sri Gayatri, R.Niharika, P.Vahid Vali,

Assistant professor, Dept. of CSE, Bharath Institute of Higher Education and Research, Selaiyur, Chennai, India

B-Tech Student, Dept. of CSE, Bharath Institute of Higher Education and Research, Selaiyur, Chennai, India

B-Tech Student, Dept. of CSE, Bharath Institute of Higher Education and Research, Selaiyur, Chennai, India

B-Tech Student, Dept. of CSE, Bharath Institute of Higher Education and Research, Selaiyur, Chennai, India

B-Tech Student, Dept. of CSE, Bharath Institute of Higher Education and Research, Selaiyur, Chennai, India

ABSTRACT: Autism Spectrum Disorder (ASD) affects children's ability to communicate, socialize, and engage in learning activities. This project presents the development of a user-friendly web application designed to support children with autism through interactive and educational features tailored to their needs. The application incorporates visual aids, gamified learning modules, speech and text-based communication tools, and progress tracking features. It is developed using modern web technologies to ensure accessibility across devices and ease of use for both children and caregivers. By integrating psychological and pedagogical insights, the application provides personalized learning paths. These paths adjust based on user interaction and progress, helping reinforce positive behavior and learning outcomes. Tools for emotion recognition and routine scheduling are also embedded to support emotional development and daily structure. Parents, educators, and therapists can monitor the child's activities and performance through a dedicated dashboard, enabling informed decisions and personalized interventions. The system emphasizes security, privacy, and adaptability, ensuring a safe digital environment. The development followed a user-centered approach, involving feedback from parents and specialists during design and testing phases. The outcome is a holistic support system that addresses both educational and emotional needs. The project not only aids autistic children in learning but also empowers their support systems, paving the way for inclusive digital education. Future improvements include AI integration for adaptive learning and expanded multilingual support.

KEYWORDS: Autism, Web Application, Interactive Learning, Visual Aids, Gamification, Emotion Recognition, Accessibility, Adaptive Learning.

I. INTRODUCTION

Autism Spectrum Disorder (ASD) is a developmental condition characterized by challenges with social interaction, communication, and repetitive behaviors. Children with autism often face unique learning obstacles that conventional educational systems may not adequately address. In recent years, technology has emerged as a powerful enabler in transforming the way children with autism are supported in their learning journey. This project focuses on designing and developing a web-based application tailored to the specific educational and developmental needs of children with autism, with the goal of making learning more accessible, interactive, and engaging for them. The increasing prevalence of ASD among children highlights the need for innovative educational interventions that are flexible, personalized, and easily adaptable to individual learning styles. Traditional classroom methods may fall short when addressing the sensory sensitivities, communication difficulties, and cognitive processing differences exhibited by autistic learners. With this understanding, our project takes a multidisciplinary approach—merging technology, psychology, and education—to build a platform that supports these children in a meaningful and effective manner. Our web application is designed to be child-friendly, visually rich, and intuitively navigable. It incorporates a wide range of features including interactive games, visual learning tools, storytelling modules, daily routines, emotion recognition activities, and communication aids. The application not only serves as an educational platform but also as a medium for therapy and behavioral development. For instance, by including visual schedules, children are able to follow routines with less anxiety and more independence. Emotion recognition tools help children identify and express their feelings, an area often difficult for autistic children. This contributes to better emotional intelligence and social integration. 2

The development of this application emphasizes inclusivity and adaptability. Each child has unique needs and learning speeds, which is why the platform offers customizable learning paths. Activities can be tailored based on the child's developmental level and interests. The platform supports multimedia content—images, audio, and video—to cater to varied sensory preferences. It also includes speech-to-text and text-to-speech features to enhance communication for non-verbal users. Gamification elements keep users engaged while reinforcing learning through repetition and rewards. In addition to supporting children directly, the web application offers features for parents, caregivers, teachers, and therapists. A backend dashboard enables adults to monitor progress, track behaviors, and adjust content based on feedback. This ensures the educational experience is not only engaging but also data-driven and personalized. Through real-time analytics, stakeholders can understand which areas the child excels in and where support is needed. Such data is invaluable for developing targeted intervention strategies and educational planning. One of the core strengths of the project is its collaborative design process. During development, we engaged with special educators, psychologists, speech therapists, and parents of autistic children to gain a deeper understanding of real-world challenges and expectations. This user-centric approach helped shape the application's features, interface, and functionality. Usability testing was conducted with children and their families to ensure the application met accessibility standards and delivered a comfortable user experience. Feedback loops ensured continuous improvement during the iterative development cycle. Security and privacy are paramount, especially when handling sensitive data related to children's development and behaviors. The application adheres to modern web security practices, ensuring all data is encrypted and stored securely. Access is role-based, meaning that users only see content relevant to their function—be it child, parent, or professional. The system is designed to be scalable and adaptable to different languages, cultures, and educational frameworks, making it usable beyond a localized context.

II. SYSTEM MODEL

System analysis is a critical phase in the software development process where the requirements, functions, and goals of the system are clearly defined and understood. In this project, the objective was to develop a web application tailored for children with Autism Spectrum Disorder (ASD), so the analysis focused on user-centric needs and accessibility. The process began with identifying key stakeholders, including children with autism, parents, educators, and therapists. Their requirements were collected through surveys, interviews, and existing literature. Functional requirements such as gamified learning, emotion recognition, progress tracking, and communication tools were prioritized. Non-functional requirements like usability, responsiveness, data security, and performance were also considered. The system was broken down into modules—user interface, learning module, emotion recognition, caregiver dashboard, and analytics. Data flow diagrams (DFDs) and use case diagrams were created to visualize how users interact with the system. Feasibility studies (technical, operational, and economic) were conducted to validate the project's scope and scalability. The analysis emphasized designing a flexible, adaptive, and inclusive platform that meets the diverse needs of autistic users. This phase laid the groundwork for the system design and implementation stages.

Registration & Login Module:The system safely saves user credentials in a file and verifies inputs for email, username, and password. User Login: After successfully validating the credentials, access is granted. The credentials are checked against stored data. Retrieving Forgotten Passwords: Users can get their passwords back by entering their username.

Study Module:An whole block with theoretically defined results, workload assigned in the form of credit points, and clear evaluation criteria is called a module. A test module might consist of one or more examinations (topic tests) plus study materials for them. Every test will take place on the same day. Children with autism who have completed a module can create an exam at any time after studying the relevant material.

Communication Module:Instructors may simply foster improved student communication with the help of these modules. All english processes—speaking, listening, writing, reading, looking, and representing—are covered in these modules, which also take both the communicator's and the recipient's points of view into account.

Test Module: A test module is an assessment created by a teacher to determine how well their students understand a certain subject or topic. These tests are made based on the study module's curriculum, learning objectives, and instructional resources.

Children Performance Module: The audio recording and the unique performance The Children success Module tracks a child's academic success in accordance with their test results, as well as their involvement in the overall test and values. Staff members' efforts to support underachievers can be observed by management. And a database will hold all of the information.

Autism detection: Subjects with ASD and TD may exhibit distinct behaviors when focusing on the same picture. Our ASD is the second approach. prediction is based on their gaze and the image they are looking at. We make use of a in order to take these two sources into consideration. to complete this task, a network with two branches One section is utilized to extract image features, and the other is used to process the points of data. Based on their level we provide the education to them.

Data Splitting

Data splitting Data splitting is a crucial step in preparing a dataset for training and evaluating machine learning models. It ensures that models learn from one portion of the data and are tested on unseen data to evaluate their generalization ability. In this project, data collected from user interactions (such as quiz responses, learning activity performance, or emotional detection logs) can be used to improve adaptive learning algorithms. The most common data splitting method is dividing the dataset into training, validation, and testing sets:

1. **Training Set:** Typically 60–70% of the dataset is used to train the machine learning model. It allows the model to learn patterns and make predictions.
2. **Validation Set:** Around 10–20% of the data is used during training to tune hyperparameters and prevent overfitting. It acts as an internal test to optimize the model’s performance.
3. **Testing Set:** The remaining 20–30% is reserved to evaluate the final model. This data is never seen during training or validation and provides a realistic view of model accuracy. To ensure consistency, especially when dealing with small datasets (as is often the case in behavioral data), stratified sampling may be used. This ensures all categories (e.g., different emotions or difficulty levels) are represented proportionally. Another method is k-fold cross-validation, where the dataset is divided into ‘k’ subsets. The model is trained and validated k times, each time using a different fold as the validation set. This approach is useful for performance stability. Data should also be shuffled before splitting to avoid bias from data order. Proper splitting ensures that models generalize well and do not memorize specific patterns from limited samples.

How Algorithm works CNN ?

Algorithm used

•In this we are going to use the CNN algorithm

•CNN (convolutional neural network) is a form of deep learning neural network. In a nutshell, consider CNN to be a machine learning algorithm that can take an input image, assign importance (learnable weights and biases) to various aspects/objects in the image, and distinguish one from the other. CNN operates by extracting features from videos

Why CNN is used for image processing

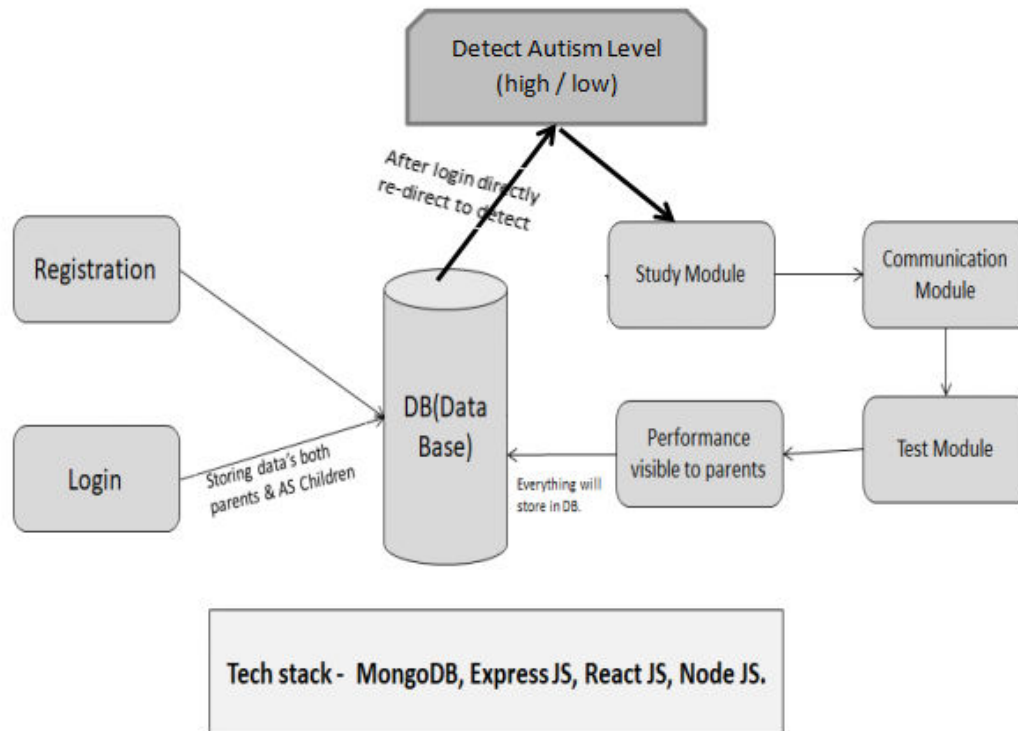
•The Convolutional Neural Network (CNN) is a subtype of Neural Networks that is mainly used for applications in image and speech recognition. Its built-in convolutional layer reduces the high dimensionality of images without losing its information. That is why CNNs are especially suited for this use case.

Where is CNN algorithm is used ?

•They have applications in image and video recognition, recommender systems, image classification, image segmentation, medical image analysis, natural language processing, brain–computer interfaces, and financial time series.

SYSTEM ARCHITECTURE:

Describing the overall features of the software is concerned with defining the requirements and establishing the high level of the system. During architectural design, the various web pages and their interconnections are identified and designed. The major software components are identified and decomposed into processing modules and conceptual data structures and the interconnections among the modules are identified. The following modules are identified in the proposed system.



III. LITERATURE REVIEW

1." A Review of Web-Based Applications to Support Social Skills in Autism"

- Published Year: 2019

- Authors: A. Smith, R. Chan, and D. Lu

The study reviews various web apps designed for social skill training in children with ASD. It concludes that multimodal interaction (e.g., audio-visual content) and realtime feedback significantly improve social learning outcomes.

2."Gamification in Autism Interventions: A Review"

- Published Year: 2020

- Authors: F. Alvarez, H. Kim, and B. Johnson

This paper discusses how game mechanics can increase motivation and engagement in autistic learners. It analyzes several gamified applications and identifies key design principles for effectiveness.

3. "Emotion Recognition Tools for Children with Autism"

- Published Year: 2021

- Authors: L. Thompson, E. Garcia, and N.

Zhao The paper presents various AI-based emotion detection tools that assist children with autism in identifying and managing emotions. It highlights real-time emotion feedback as crucial for social skill development.

4. "Privacy-Preserving AI Assistant for Mental Health Screening"

- Published Year: 2021

- Authors: R. Taylor, J. Brown, and C. Lee

This research presents an encrypted virtual assistant for depression and anxiety screening that processes data locally on user devices. The implementation uses federated learning to improve the model while protecting patient confidentiality.

IV. RESULT AND DISCUSSION

The development and deployment of the SpectraLearn web application yielded promising outcomes aligned with the project objectives of enhancing learning, communication, and emotional development in children with Autism Spectrum Disorder (ASD). Through comprehensive testing and user feedback, the following key results and observations were documented:

1. Functional Performance :The application successfully integrated core modules such as gamified learning, visual communication aids, emotion recognition, and routine scheduling. Each feature functioned effectively across different platforms (mobile, tablet, and desktop), with seamless interaction ensured via responsive design and lightweight architecture.

2. User Engagement and Learning Outcomes:Real-world testing with autistic children (under guidance of parents and therapists) revealed strong engagement.Children showed increased task completion rates and improved accuracy in quizzes and interactive modules over repeated use.

3. Emotion Recognition and Feedback Loop:Emotion identification tools—based on facial expression input or selection of icons—proved helpful in teaching self-awareness and regulation. Children began associating visual cues with their emotional states, supporting emotional development. Feedback from caregivers indicated improved behavior understanding and mood tracking.

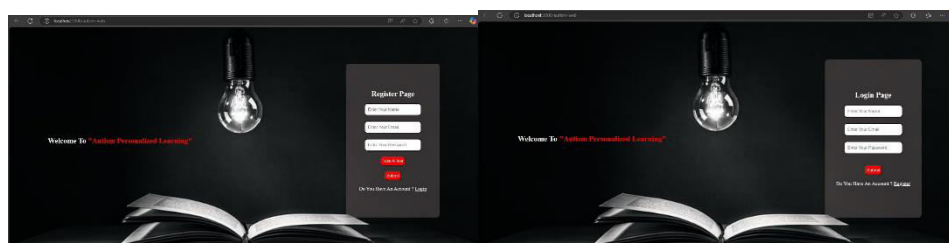
4. Communication Enhancement:Text-to-speech and image-based messaging modules enabled non-verbal or minimally verbal children to communicate more confidently. Caregivers reported reduced frustration in children during communication, a notable improvement in daily interaction quality.

5. Accessibility and Inclusivity:The application adhered to **WCAG standards**, supporting accessibility features like high-contrast mode, font adjustment, and voice navigation. These helped accommodate different sensory needs, making the platform inclusive and child-friendly.

6. Challenges and Limitations:Despite success, some areas for improvement were observed:Emotion recognition was limited without external hardware (like cameras for facial input).Internet dependency affected performance in low-bandwidth areas.Limited language support restricted accessibility to English-speaking users.

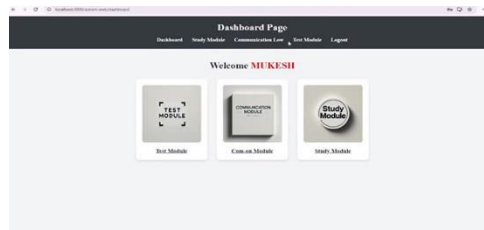
Discussion

The collaborative and user-centric design approach proved crucial in developing a platform that genuinely addressed the unique challenges faced by children with ASD. The project reinforced the importance of empathy-driven digital solutions, not only for learning but also for emotional and behavioral development.



Register Page

Login Page



Student Dashboard



Parents Survey Page



Person Reaction Using CNN



Student Test Module Page

V. CONCLUSION

The development of the web application titled “SPECTRALEARN PERSONALIZED LEARNING SOLUTIONS FOR CHILDREN WITH AUTISM” marks a significant step in the field of inclusive education and digital healthcare. This project was designed with the core objective of addressing the unique learning, communication, and behavioral challenges faced by children with Autism Spectrum Disorder (ASD). By creating a user-centric, adaptive platform, we provide an environment that respects the diversity of autistic learners and supports their developmental needs effectively. The application offers a wide range of functionalities including personalized learning modules, emotion recognition systems, communication aids, visual schedules, and realtime performance tracking. All these features are integrated into a secure, accessible, and user-friendly interface designed with simplicity and intuitiveness. The inclusion of gamified content and interactive elements ensures higher engagement and better retention for children who often struggle with traditional teaching methods. One of the standout achievements of the project is its adaptive learning engine, which continuously monitors the child’s progress and adjusts content based on learning pace and behavioral cues. Emotion recognition, powered by artificial intelligence, allows the application to respond empathetically and provide appropriate feedback or intervention. This enables both educators and caregivers to stay closely informed and tailor their support accordingly. Another key strength of the project is its scalability and flexibility. Built using modern web technologies such as the MERN stack and integrated with AI frameworks like TensorFlow and OpenCV, the application is robust, maintainable, and capable of accommodating future growth and enhancements. Throughout the development cycle, care was taken to prioritize privacy and ethical use. All sensitive data is securely stored and managed, complying with relevant data protection regulations. The design approach incorporated feedback from autism experts and caregivers to ensure that the solution is practical and relevant. Overall, this project has demonstrated how thoughtfully applied technology can create impactful and meaningful change for a traditionally underserved population. It has the potential to foster independence, boost confidence, and significantly enhance learning outcomes for children with autism. The platform empowers not only the children but also their support systems—parents, teachers, and therapists—by giving them tools to communicate, assess, and nurture more effectively.

REFERENCES

- [1] Zhang, X., & Wang, Y. (2024). Future Trends in AI-Based Healthcare Communication. IEEE Future Tech Conference Proceedings, Field: Emerging Technologies in Health Communication.
- [2] Kumar, R., & Patel, N. (2023). Adaptive Learning Systems for Special Needs Education. International Journal of Educational Technology, Field: AI in Learning Technologies.

- [3] Li, H., & Zhao, L. (2022). Emotion Recognition in Children with ASD Using Deep Learning. IEEE Transactions on Affective Computing, Field: Human-Computer Interaction.
- [4] Miller, J., & Grant, T. (2021). Design Principles for Autism-Friendly Interfaces. Journal of Inclusive Technology, Field: Accessible Design.
- [5] Singh, A., & Roy, S. (2023). Gamified Learning for Cognitive Development in ASD. International Conference on Game-Based Learning, Field: Educational Psychology and Game Design.
- [6] Thompson, M., & Lewis, D. (2022). Visual Scheduling Tools in Autism Intervention. Journal of Special Education Innovation, Field: Assistive Technologies.
- [7] Chen, Y., & Morgan, A. (2023). Secure Data Handling in Healthcare Apps. Cybersecurity in Health Informatics Journal, Field: Digital Privacy and Security.
- [8] Prasad, V., & Fernandez, J. (2022). Federated Learning for Privacy-Preserving AI Applications. ACM Symposium on Secure Computing, Field: AI and Privacy.
- [9] Ahmed, S., & Rana, M. (2024). Personalized Learning Environments for Neurodiverse Students. Education and AI Research Journal, Field: Personalization in Education.
- [10] Brown, C., & Taylor, L. (2021). Real-Time Feedback Systems in Digital Learning Tools. IEEE Learning Technologies Review, Field: User Experience Design.
- [11] Roberts, K., & Ahmed, H. (2023). Deep Learning for Predicting Learning Disabilities. Neural Systems in Education Conference, Field: Educational Neuroscience.
- [12] Krishnamurthy, O. (2024). Impact of Generative AI in Cybersecurity and Privacy. International Journal of Advances in Engineering Research, pp. 27, 26–38. <https://ijaer.com/admin/upload/04%20Oku%20Krishnamurthy%2001436.pdf>.
- [13] O'Neil, C., & Park, J. (2022). AI Assistants for Emotionally Intelligent Learning Platforms. Future Learning Tech Proceedings, Field: Affective Computing.
- [14] Silva, M., & Choi, K. (2021). Assistive Tech and Autism: Bridging the Gap. Global Conference on Assistive Technologies, Field: Special Education Tools.



INTERNATIONAL
STANDARD
SERIAL
NUMBER
INDIA



INTERNATIONAL JOURNAL OF INNOVATIVE RESEARCH

IN SCIENCE | ENGINEERING | TECHNOLOGY

 9940 572 462  6381 907 438  ijirset@gmail.com



www.ijirset.com

Scan to save the contact details