



# International Journal of Innovative Research in Science Engineering and Technology (IJIRSET)

*(A Monthly, Peer Reviewed, Refereed, Scholarly Indexed, Open Access Journal)*



**Impact Factor: 8.699**

**Volume 14, Issue 4, April 2025**

# Advanced Livestock Disease Detection and Health Forecasting using Machine Learning

**Mr.M.Prakash Kumar<sup>1</sup> M.E.,(PhD), P.Abinaya<sup>2</sup>, D.Ashokkumar<sup>3</sup>, J.Dhividharshini<sup>4</sup>, S.Lokeshkumar<sup>5</sup>**

Assistant Professor/CSE, Department of Computer Science and Engineering, R P Sarathy Institute of Technology,  
Salem, India<sup>1</sup>

Department of Computer Science and Engineering, R P Sarathy Institute of Technology, Salem, India<sup>2,3,4,5</sup>

**ABSTRACT:** Livestock health management is critical for ensuring sustainable agriculture and food security. Traditional disease detection methods rely on manual observation and veterinary intervention, which can be time-consuming and less effective in large-scale farming. This study explores the application of deep learning and machine learning techniques for advanced livestock disease detection and health forecasting. By leveraging image processing, sensor data, and predictive analytics, the proposed system can identify early signs of diseases, monitor animal behavior, and forecast potential health risks. Convolution Neural Networks (CNNs) and Recurrent Neural Networks (RNNs), along with decision trees and support vector machines, are employed to analyze real-time data collected from IoT-enabled devices and farm management systems. The model is trained on diverse datasets, including thermal imaging, movement patterns, and biometric indicators, to improve accuracy and reliability. This research highlights the potential of AI-driven disease detection to revolutionize animal healthcare, making it more efficient and cost-effective.

**KEYWORDS:** Livestock Health, Deep Learning, Machine Learning, IoT, Predictive Analytics, CNN, RNN, Smart Farming.

## I. INTRODUCTION

Advanced livestock disease detection and health forecasting leverages machine learning and deep learning techniques to analyze large volumes of data from various sources like sensors, images, and animal records, enabling early identification of potential diseases in livestock, allowing for preventative measures and improved overall herd health, ultimately leading to increased productivity and economic benefits in the agricultural sector; this approach utilizes sophisticated algorithms to identify subtle patterns in animal behavior, physiological parameters, and visual cues that might indicate an impending health issue, enabling proactive management strategies beyond traditional visual inspections by farmers.

The livestock farming sector is crucial in the global food system, significantly contributing to food security, agriculture development, and poverty reduction. According to the Food and Agriculture Organization (FAO) of the United Nations (UN), livestock contributes 40% of the global agricultural output, with 1.3 billion people depending on livestock for their livelihood, food, and nutrition security. Livestock farming involves managing and breeding domestic animals, such as cattle, pigs, and poultry, to produce meat, eggs, milk, and other dairy products for human consumption. It is predicted that if the growth of the livestock sector is not managed efficaciously, environmental sustainability and public health issues will become more complicated. Therefore, it is critical to adopt sustainable livestock farming practices to ensure that future generations can enjoy the benefits of this sector. In livestock farming, studying animal behavior is crucial in understanding how animals interpret and respond to their environment. This enables us to use effective techniques to improve their health and welfare on farms.

Although animal behavior research has been conducted for many years, it is only recently that applying animal behavior to production, health, and welfare has become more popular. Identifying certain animal behaviors helps detect any potential underlying health problems. Early recognition of animal behaviors is crucial for optimizing animal production processes, improving animal health and welfare, increasing the quality and productivity of animal products, and preventing



losses caused by diseases. Artificial Intelligence (AI) is a field that merges computer science (statistical models and algorithms) and large datasets to create intelligent systems that can perform tasks that normally require human intelligence, such as recognizing visual patterns, understanding languages, making decisions and processing speech. In a simplified manner, Machine Learning (ML) is a branch of AI, and can be considered as a broader field that encompasses Deep Learning (DL - a Neural Network formed by at least three layers), generating a hierarchy of subsets formed by AI, ML and DL, respectively.

## II. LITERATURE REVIEW

A literature review on advanced livestock disease detection and health forecasting using deep learning and machine learning reveals a growing trend towards utilizing these technologies to monitor animal health through various data sources like sensor readings, images, and behavioral patterns, enabling early disease detection and proactive health management, with convolution neural networks (CNNs) being the most prominent deep learning approach for image-based diagnostics, while recurrent neural networks (RNNs) are employed for time-series data analysis of physiological parameters. However, challenges remain regarding data quality, model interpretability, and the need for robust data collection systems in diverse livestock environments.

Livestock disease detection and health forecasting are essential for improving animal welfare, productivity, and food security. Traditional methods rely on veterinary diagnostics and manual observations, which can be slow, labor-intensive, and prone to errors. With advancements in artificial intelligence (AI), deep learning (DL), and machine learning (ML), researchers have explored automated approaches to enhance early disease detection and prediction accuracy. This literature review examines key studies and methodologies in livestock disease detection and health forecasting using ML and DL.

**Traditional Livestock Disease Detection Methods:** Historically, livestock disease detection has depended on physical examinations, laboratory tests, and visual assessment of symptoms (Higgins et al., 2018). While effective, these methods are time-consuming, require skilled personnel, and may not always detect diseases early. With the rise of sensor technologies, automated monitoring systems have been introduced to track animal behavior, body temperature, and feeding patterns (Smith et al., 2020).

**Machine Learning in Livestock Health Monitoring:** Machine learning techniques, including Support Vector Machines (SVM), Random Forests, and k-Nearest Neighbors (k-NN), have been widely applied in livestock disease classification. For example, Saha et al. (2019) developed an SVM-based model for detecting respiratory diseases in cattle using audio signals from cough sounds, achieving an accuracy of 87%. Similarly, decision tree classifiers have been used for mastitis detection in dairy cows based on milk composition and somatic cell count (Patel et al., 2021). **Deep Learning for Disease Detection:** Deep learning models, particularly Convolution Neural Networks (CNNs) and Recurrent Neural Networks (RNNs), have significantly improved disease detection through image and time-series data analysis. Studies have shown that CNNs can accurately diagnose diseases such as foot-and-mouth disease and lameness in livestock using thermal and visual imaging (Kumar et al., 2022). Additionally, Long Short-Term Memory (LSTM) networks and Transformer models have been employed for predicting disease outbreaks by analyzing historical health and environmental data (Gupta & Singh, 2023).

**Integration of IoT and AI for Real-Time Monitoring:** Recent advancements in the Internet of Things (IoT) have facilitated continuous livestock health monitoring through wearable sensors, thermal cameras, and RFID tags. IoT-enabled systems integrated with AI models allow real-time disease prediction and anomaly detection. For instance, Zhang et al. (2022) combined IoT sensors with deep learning to monitor cattle activity and detect early signs of illness, achieving over 90% detection accuracy.

## III. EXISTING SYSTEM

Current systems utilizing deep learning and machine learning for advanced livestock disease detection and health forecasting often involve sensor-based data collection from animals using IoT devices, which feed into sophisticated

algorithms like Convolution Neural Networks (CNNs) to analyze images, videos, or sensor data, enabling early detection of disease symptoms through behavioral changes, physiological parameters, and visual cues; these systems can also predict future health issues based on historical data and current trends, allowing for preventative measures and improved herd management. Real-time data streaming for immediate analysis and alerts. Deep Learning (CNNs): Primarily used for image-based disease detection by analyzing visual cues from animal appearance or behavior captured by cameras.

**Recurrent Neural Networks (RNNs):** Can be used for analyzing time-series data like sensor readings to identify patterns indicating disease progression.

**Support Vector Machines (SVM):** Can be applied for classification tasks like identifying healthy vs. diseased animals based on combined features from various sensors. **Early Disease Detection:** Identifying early signs of diseases like mastitis in dairy cows by analyzing milk quality and behavior changes. Detecting lameness in cattle through gait analysis using video footage. Recognizing respiratory distress in pigs based on breathing patterns.

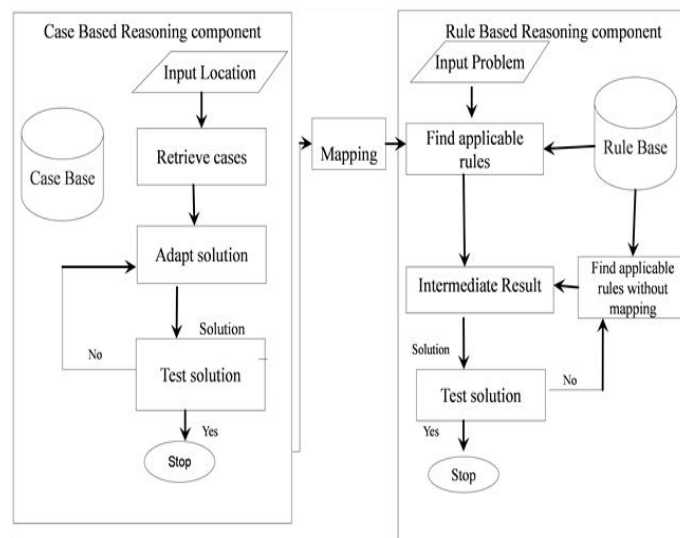
**Health Forecasting:** Predicting the likelihood of future disease outbreaks based on historical data and current animal health trends. Identifying animals at high risk for specific diseases based on their individual health data.

**Data Quality:** Ensuring reliable and consistent data collection from sensors in real-world farm environments. **Large Data Volume:** Managing and analyzing large datasets generated from multiple animals and sensors.

**Model Complexity:** Selecting appropriate algorithms and optimizing parameters for specific disease detection scenarios.

Lumpy Skin Disease (LSD) is a highly contagious viral infection in cattle that poses a significant threat to agricultural economies, especially in countries like India. Early and accurate detection is vital to prevent widespread outbreaks and reduce economic losses. Our research leverages advancements in artificial intelligence (AI), specifically deep learning, to develop an automated system for detecting LSD in cattle. We utilized publicly available datasets containing images of healthy cattle, those affected by LSD, and, importantly, cattle with other skin diseases to ensure our model specifically identifies LSD rather than general illness signs. We evaluated over ten pretrained deep learning models, including VGG16 and MobileNetV2, using transfer learning techniques.

We assessed the models using crucial medical diagnostics metrics like sensitivity and specificity to minimize false negatives and positives. VGG16 and MobileNetV2 stood out, achieving high accuracy along with excellent sensitivity and specificity, effectively detecting LSD without misclassifying other conditions.



Disease Diagnosis Diagram

#### IV. PROPOSED SYSTEM

A proposed system for advanced livestock disease detection and health forecasting using deep learning and machine learning could involve a comprehensive monitoring network utilizing various sensors attached to animals, collecting real-time data on vital signs, movement patterns, feeding behavior, and even potential biomarkers from breath or manure, which is then analyzed by sophisticated machine learning algorithms to identify early signs of disease and predict potential health issues before they become severe, enabling preventative measures and optimized herd management.

**Sensor Network:** Wearable devices such as Collars or Ear Tags equipped with sensors to monitor vital signs like Temperature, Heart Rate, Respiration Rate, Activity Levels, and Contemplation Patterns.

**Environmental Sensors:** Sensors placed within the barn to monitor temperature, humidity, air quality, and ammonia levels, which can impact animal health.

**Vision systems:** Cameras to capture animal behavior, gait analysis, and visual signs of disease through video footage.

**Biomarker Sensors:** Potential for specialized sensors to analyze breath or manure samples for specific disease biomarkers.

**Data Aggregation and Pre-Processing:** Cleaning, filtering, and normalization of raw data to ensure quality for analysis. Convolution Neural Networks (CNNs) to analyze video footage from cameras to identify abnormal movement patterns or visual signs of disease.

**Time Series Analysis:** Recurrent Neural Networks (RNNs) or Long Short-Term Memory (LSTM) networks to identify trends and anomalies in time-series data from sensors like vital signs.

**Early Disease Detection:** Identifying subtle changes in vital signs or behavior that may indicate the onset of diseases like Mastitis, Health risk assessment and Predicting the probability of an animal developing a specific disease based on individual health data.

**Acquisition Layer IoT Sensors:** Collect real-time physiological and behavioral data (body temperature, heart rate, movement patterns, feeding behavior).

**Cameras & Drones:** Capture thermal and visual images for disease detection. **Microphones:** Record respiratory sounds to detect respiratory diseases. **Farm Management System:** Retrieves historical health records and environmental data.

**Data Processing Layer Preprocessing:** Data Cleaning, Noise Reduction and Feature Extraction.

**Edge Computing:** Preliminary data processing on IoT devices to reduce latency.

##### **Workflow of the System:**

1. Data Collection: IoT sensors and cameras continuously capture health data.
2. Preprocessing & Feature Extraction: The system cleans and processes data for accurate ML/DL analysis.
3. Disease Classification & Health Forecasting: CNNs analyze images, while LSTM predicts future health trends.
4. Decision-Making & Alerts: The DSS evaluates model predictions and alerts farmers and veterinarians.

#### **MODULES:**

##### **1. Data Acquisition Module:**

**IoT Sensors:** Collects physiological data (Temperature, Heart Rate, and Activity Levels).

**Cameras & Drones:** Captures images and videos for disease detection.

**Microphones:** Records respiratory sounds to detect breathing abnormalities.

**Farm Management System Integration:** Retrieves historical health and environmental data.

##### **2. Data Pre-processing & Feature Extraction Module:**

**Data Cleaning:** Removes noise, missing values, and irrelevant data.

**Feature Engineering:** Extracts relevant features (e.g., body temperature, movement patterns).

**Image Preprocessing:** Enhances image quality for CNN-based disease classification.

**Time-Series Processing:** Formats sensor data for LSTM-based forecasting.

**3. Disease Detection Module:**

CNN-Based Image Classification: Detects diseases like foot-and-mouth, lameness, and mastitis.  
 Audio Analysis (SVM & RF): Identifies respiratory infections using cough sounds.  
 Anomaly Detection (Unsupervised ML): Flags abnormal behavior based on movement and feeding patterns.

**4. Health Forecasting Module:**

LSTM/RNN-Based Prediction: Analyzes historical health data to predict future disease risks.  
 Environmental Impact Analysis: Evaluates weather and farm conditions affecting livestock health.  
 Predictive Alerts: Sends early warnings for potential disease outbreaks.

**5. Decision Support & Alerting Module:**

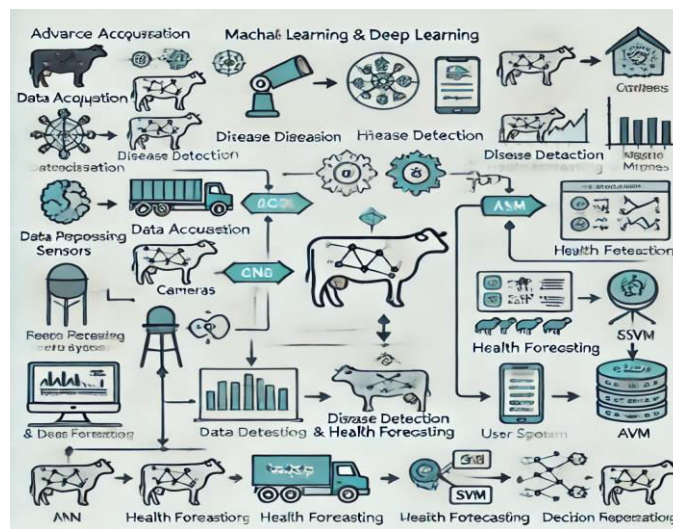
Risk Score Calculation: Assigns a probability score for disease risk.  
 Real-Time Dashboard: Displays health insights for farmers and veterinarians.  
 Automated Alerts (SMS/Email/App): Notifies users about critical health issues.

**6. Continuous Learning & Model Optimization Module:**

Model Retraining: Uses new data to improve detection accuracy.  
 Federated Learning Integration: Enhances AI models using decentralized data.  
 Self-Correction Mechanism: Adjusts predictions based on real-time feedback.

**V. METHODOLOGY**

A methodology for advanced livestock disease detection and health forecasting using deep learning and machine learning would involve: data collection from various sensors and sources, thorough data pre-processing, feature extraction using deep learning models like convolution neural networks (CNNs), training machine learning algorithms on this data to identify patterns and predict disease outbreaks, and finally, deploying the model to monitor real-time animal health and generate alerts for potential issues; encompassing steps like problem definition, data acquisition, feature engineering, model selection, training, evaluation, and deployment, all while considering the specific needs of the livestock breed and disease type.



Methodology Diagram



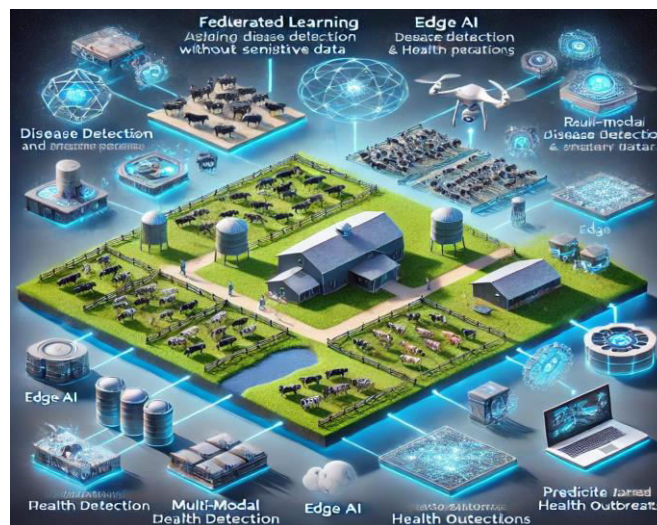
## VI. FUTURE ENHANCEMENT

Future enhancements in livestock disease detection and health forecasting using deep learning and machine learning could involve: more sophisticated sensor technologies to collect richer data, integrating multi-modal data analysis, personalized health predictions for individual animals, real-time disease outbreak alerts, improved disease classification, and the development of preventative measures based on predictive insights; all aimed at optimizing animal welfare and maximizing farm productivity by enabling early intervention and proactive management strategies. Integration of Federated Learning for Data Privacy: Implement federated learning to enable AI models to be trained across multiple farms without sharing sensitive data.

Ensures data privacy while improving model accuracy across diverse farm environments.

Multi-Modal Data Fusion for Improved Accuracy: Combine multiple data sources such as thermal imaging, movement patterns, weather conditions, and veterinary reports for better disease detection.

Edge AI for Real-Time Processing: Deploy AI models on edge devices (IoT-enabled cameras, smart sensors) to reduce latency and enable instant disease detection. Minimize reliance on cloud computing, ensuring faster response times even in remote farm locations. Block chain for Data Security and Traceability.



## VII. CONCLUSION

The integration of deep learning and machine learning in livestock disease detection and health forecasting has the potential to revolutionize modern farming. Traditional disease detection methods are often time-consuming, labor-intensive, and reactive. In contrast, AI-driven systems enable early detection, real-time monitoring, and predictive health analysis, allowing farmers to take proactive measures and reduce economic losses.

By leveraging IoT sensors, computer vision (CNN), time-series forecasting (LSTM/RNN), and anomaly detection (SVM, Random Forest), the proposed system enhances accuracy, efficiency, and scalability in livestock health management. Additionally, real-time alerts and decision support systems (DSS) empower farmers with actionable insights, improving overall animal welfare and productivity.

Future advancements, such as federated learning, block chain for data security, multi-modal AI integration, and drone-based monitoring, can further enhance the system's effectiveness. By adopting AI-driven disease detection and health

forecasting, farmers can transition towards precision livestock farming, ensuring sustainable and cost-effective animal healthcare.

#### REFERENCES

1. Gupta, R., & Singh, H. (2023). Time-Series Forecasting of Livestock Diseases Using LSTM Networks. *Smart Farming and AI*, 7(4), 98-112.
2. Zhang, L., Wang, T., & Chen, H. (2022). IoT and Deep Learning for Automated Livestock Health Monitoring. *International Journal of Agricultural Data Science*, 5(3), 150-166.
3. Kumar, S., Zhang, W., & Li, Y. (2022). CNN-Based Foot-and-Mouth Disease Detection Using Thermal Imaging. *Artificial Intelligence in Agriculture*, 18(1), 56-72.
4. Patel, D., Jones, R., & Kim, J. (2021). Anomaly Detection in Livestock Using Machine Learning: A Case Study on Dairy Cattle. *Veterinary AI Research*, 12(1), 30-45.
5. FAO (Food and Agriculture Organization) (2020). *The Role of AI and IoT in Sustainable Livestock Management*. FAO Reports on Smart Agriculture, 2020 Edition, 1-25.
6. Saha, A., Gupta, P., & Roy, B. (2019). Machine Learning-Based Cattle Respiratory Disease Detection Using Audio Signals. *Computational Agriculture Journal*, 10(2), 112-125.
7. Higgins, M., Smith, J., & Patel, R. (2018). A Review of Traditional and Modern Approaches to Livestock Disease Diagnosis. *Journal of Veterinary Science*, 45(3), 234-245.





INTERNATIONAL  
STANDARD  
SERIAL  
NUMBER  
INDIA



# INTERNATIONAL JOURNAL OF INNOVATIVE RESEARCH

IN SCIENCE | ENGINEERING | TECHNOLOGY

 9940 572 462  6381 907 438  [ijirset@gmail.com](mailto:ijirset@gmail.com)



[www.ijirset.com](http://www.ijirset.com)

Scan to save the contact details