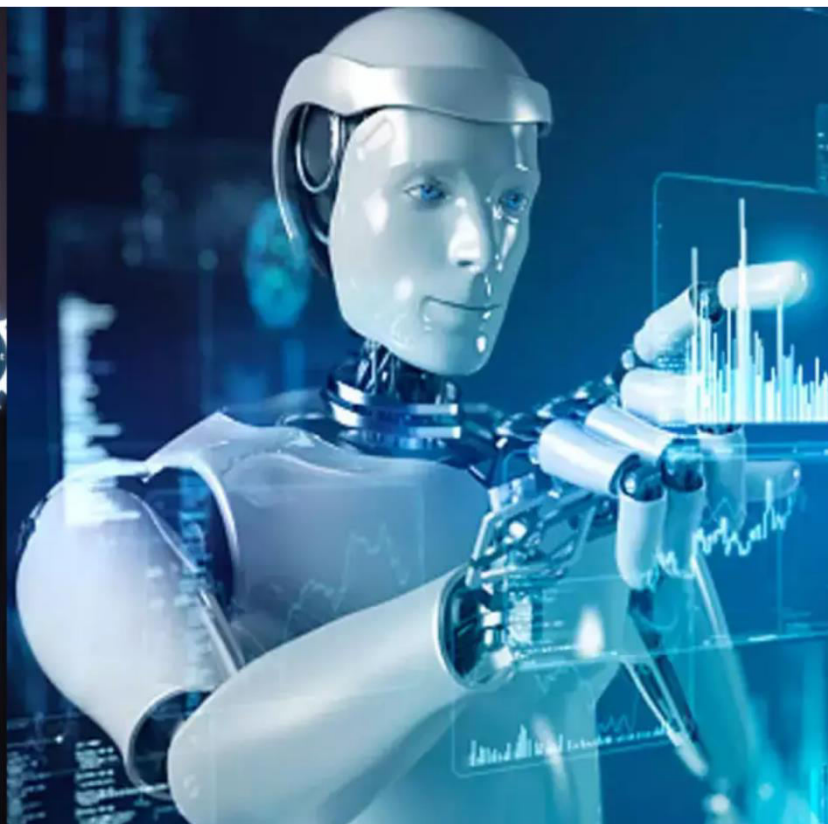




International Journal of Innovative Research in Science Engineering and Technology (IJIRSET)

(A Monthly, Peer Reviewed, Refereed, Scholarly Indexed, Open Access Journal)



Impact Factor: 8.699

Volume 14, Issue 4, April 2025

Open-Set Detection, Tracking, and Following in Real Time

Malathy Rajkumar, G.Dileep Kumar, M.Vinay Yadav, G Vishnu Priya, M Harish

Dept. of CSE., Kuppam Engineering College, JNTUA University, Kuppam, A.P., India

ABSTRACT: Real-time detection, tracking, and following of objects or individuals is a fundamental capability in fields such as robotics, surveillance, and autonomous systems. The Follow Anything project introduces an open-set approach, enabling the system to recognize and track dynamically detected objects without predefined categories. This adaptability is crucial for real-world applications where targets may vary significantly in shape, size, and behavior, requiring a robust framework that operates effectively in unstructured environments. By prioritizing flexibility, the project aims to address the limitations of traditional tracking systems that are often constrained by rigid classification schemes, allowing for a more inclusive and versatile approach to object tracking.

This research integrates advanced computer vision techniques and deep learning models to ensure seamless tracking even in challenging conditions, such as occlusions, varying lighting, and continuous movement. The system employs adaptive tracking algorithms that enhance target stability, allowing it to maintain precision and accuracy in dynamic settings. These algorithms are designed to dynamically adjust to changes in the environment and the characteristics of the targets, ensuring that the tracking remains consistent even when objects exhibit unpredictable behavior. By leveraging state-of-the-art models, the framework is designed to optimize real-time performance, ensuring minimal latency in detection and tracking operations. This optimization is particularly important in applications such as autonomous vehicles, where delays in processing can lead to critical safety issues.

A major challenge in tracking systems is maintaining reliability when objects undergo appearance changes or are partially obstructed. To address this, the project leverages robust detection models and predictive mechanisms that anticipate movement patterns, making it capable of handling cluttered environments and unpredictable scenarios. The integration of machine learning-driven enhancements allows the system to refine tracking methodologies continuously, ensuring high responsiveness in diverse applications such as security monitoring, robotic navigation, and human-computer interaction. Moreover, the system's ability to learn from past experiences and adapt its tracking strategies enhances its robustness, making it more effective in real-world situations where variability is the norm. By creating a scalable and flexible tracking framework, this project represents a significant advancement in dynamic object following in real-world conditions. The ability to adapt to unknown targets in open-set scenarios expands the scope of automation, making it a valuable asset in multiple industries. This adaptability not only increases the system's utility across various applications but also positions it as a pioneering solution in the field of intelligent tracking. The research aims to pave the way for next-generation AI-powered tracking systems, contributing to innovations in real-time detection and autonomous interactions. As the project progresses, it promises to unlock new possibilities for automation, driving advancements in how machines perceive and interact with their surroundings, ultimately leading to smarter, more efficient systems that can operate in complex environments.

KEYWORDS: real-time detection, object tracking, open-set approach, adaptive tracking algorithms, machine learning, computer vision, autonomous systems, dynamic environments.

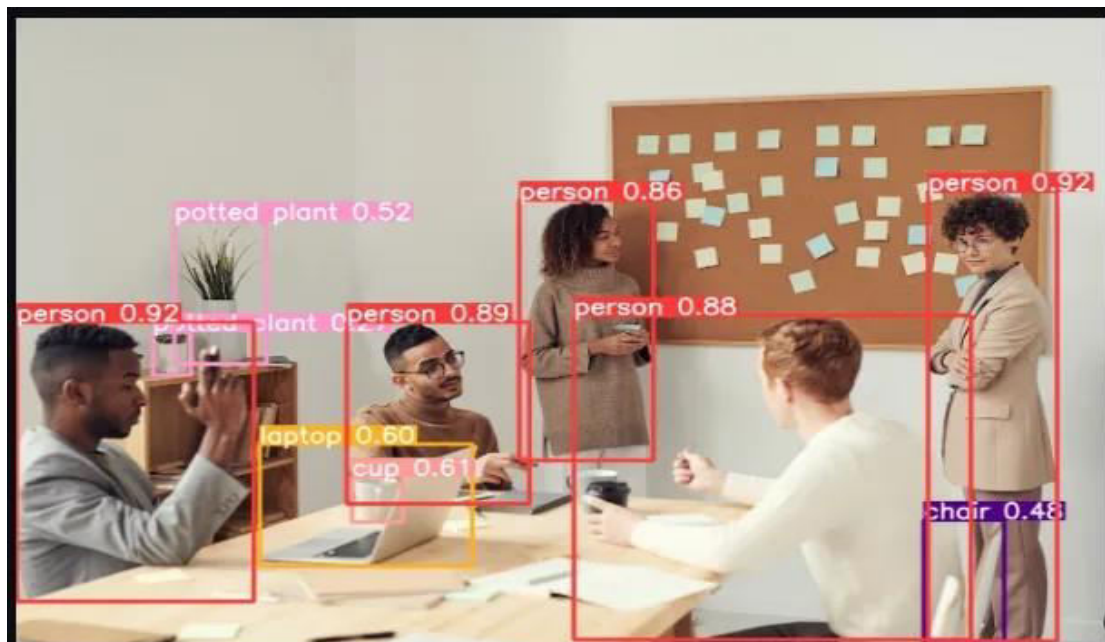
I. INTRODUCTION

The Open-Set Detection, Tracking, and Following in Real Time project aims to develop a robust computer vision system capable of detecting arbitrary objects in a scene, allowing users to select objects of interest, and subsequently tracking those objects in real-time video feeds. The system integrates deep learning-based object detection with traditional tracking algorithms to create a flexible and user-friendly application.

The project leverages recent advancements in computer vision, particularly the YOLO (You Only Look Once) architecture for fast and accurate object detection, and combines it with the CSRT (Channel and Spatial Reliability Tracking) algorithm for reliable object tracking across video frames. The system is implemented with a PyQt5-based graphical user interface that provides intuitive controls for capturing images, selecting objects to track, and visualizing the tracking process.

Unlike closed-set systems that can only detect and track predefined object categories, this project focuses on open-set detection capabilities, allowing the system to handle novel object types without requiring retraining. This makes the system particularly valuable for applications where the range of potential objects to track is diverse and unpredictable.

Object-Detection On An Image Using YOLOV8



Project Objectives

The primary objectives of this project are:

Real-Time Object Detection: To develop a real-time object detection system capable of accurately identifying multiple object classes. This system will utilize state-of-the-art machine learning techniques, such as deep learning algorithms, to ensure high detection accuracy even in challenging conditions. By training the model on diverse datasets, the system will be equipped to recognize a wide variety of objects, making it suitable for dynamic environments such as urban areas, indoor settings, and natural landscapes.

Robust Tracking Algorithm: To implement a robust tracking algorithm that can reliably follow selected objects across video frames. This algorithm will be designed to handle various challenges, including occlusions where objects may be blocked from view, rapid movements that could lead to loss of tracking, and changes in appearance due to lighting or perspective shifts. The goal is to ensure that the system maintains continuity in tracking, providing users with consistent and reliable data on object movements.

User-Friendly Interface: To create a user-friendly interface that simplifies the process of selecting and tracking objects of interest. This interface will be designed with non-technical users in mind, incorporating intuitive controls, visual feedback, and step-by-step guidance to enhance the user experience. Features may include drag-and-drop functionality, real-time tracking visualizations, and customizable settings that allow users to tailor the system to their specific needs.

Optimization for Real-Time Performance: To optimize the system for real-time performance on standard consumer hardware. This objective involves refining algorithms to reduce computational complexity and utilizing efficient processing techniques, such as model pruning and quantization, to ensure that the system can operate effectively without requiring specialized or high-end equipment. By achieving real-time performance, the system will be able to provide immediate feedback and tracking results, which is critical for applications like surveillance and interactive systems.

Performance Evaluation: To evaluate the system's performance across various metrics, including detection accuracy, tracking reliability, and processing speed. This evaluation will involve rigorous testing in different environments and scenarios to gather quantitative data. Metrics such as precision, recall, and F1 score will be used to assess detection accuracy, while tracking reliability will be evaluated based on the system's ability to maintain object identification over time. Processing speed will be measured to ensure that the system meets real-time requirements.

Real-Time Tracking Technologies

Object tracking in video sequences involves estimating the trajectory of an object over time. Unlike detection, which operates on individual frames independently, tracking leverages temporal information to maintain object identity across frames, often at a lower computational cost.

Tracking technologies can be broadly categorized into several approaches:

Point tracking: Represents objects as points and associates these points across frames based on the object's previous state.

Kernel tracking: Based on the object's appearance and shape, often using template matching or visual features.

Silhouette tracking: Tracks the complete object region, typically using contours or shape models.

Correlation filters: Efficiently model the appearance of objects in the frequency domain.

Deep learning trackers: Leverage neural networks to learn discriminative features for tracking.

For real-time applications, the tracking algorithm must balance accuracy with computational efficiency. Classic algorithms like Kernelized Correlation Filters (KCF) and Minimum Output Sum of Squared Error (MOSSE) offer high-speed tracking but may struggle with challenging scenarios involving occlusion or appearance changes.

More robust algorithms like CSRT (Channel and Spatial Reliability Tracking) incorporate spatial reliability maps to adapt the correlation filter support to the part of the object suitable for tracking. This makes CSRT particularly effective for tracking non-rectangular objects or objects that undergo partial occlusion, at the cost of slightly increased computational requirements compared to simpler methods.

Recent advancements in tracking technology include Siamese network architectures that learn a similarity function between object templates and candidate regions, and approaches that integrate detection and tracking in unified frameworks to recover from tracking failures.

II. YOLO ARCHITECTURE AND EVOLUTION

YOLO (You Only Look Once) represents one of the most influential architectures in object detection, known for its speed and simplicity. Since its introduction by Joseph Redmon in 2016, YOLO has undergone significant evolution across multiple versions, each improving upon its predecessors.

The original YOLOv1 pioneered the concept of framing object detection as a regression problem, directly predicting bounding boxes and class probabilities from full images in a single evaluation. This approach dramatically increased processing speed compared to region proposal methods, achieving 45 frames per second on standard hardware.

YOLOv2 (also known as YOLO9000) introduced batch normalization, anchor boxes, and dimension clusters to improve detection accuracy while maintaining speed. It also pioneered joint training on detection and classification datasets, enabling the recognition of over 9,000 object categories.

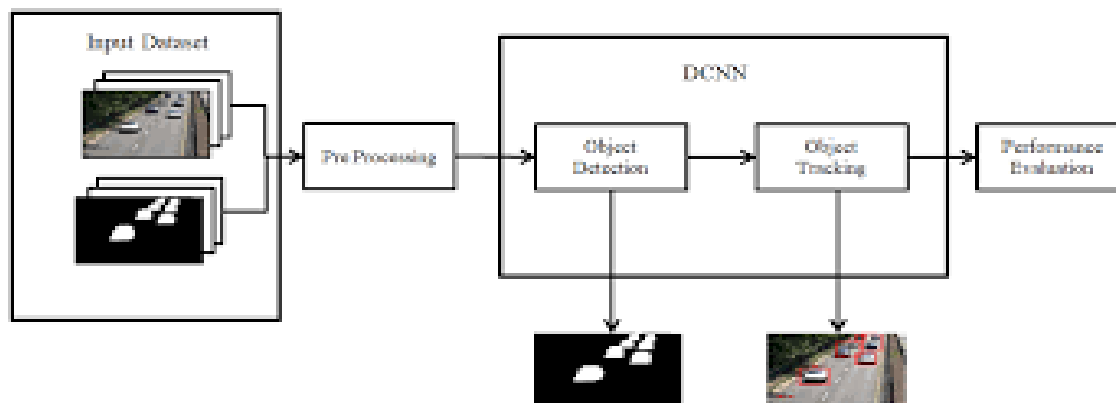
YOLOv3 further refined the architecture with a feature pyramid network for better detection across different scales, a more powerful backbone network (Darknet-53), and improvements in handling small objects. These changes resulted in competitive accuracy with state-of-the-art detectors while maintaining real-time performance.

YOLOv4 incorporated several recent advances in CNN design, including Cross-Stage Partial connections (CSP), Path Aggregation Network (PAN) for feature fusion, and various training techniques like Mosaic data augmentation and CIoU loss. These innovations significantly improved accuracy without compromising speed.

YOLOv5, developed by Ultralytics, reimplemented YOLO in PyTorch, making it more accessible and easier to deploy. It introduced further architectural optimizations and a range of model sizes (from nano to extra large) to accommodate different computational constraints.

More recent iterations include YOLOR (You Only Learn One Representation), YOLOv6, YOLOv7, and YOLOv8, each pushing the performance boundaries with innovations in network architecture, training methodologies, and optimization techniques.

The evolution of YOLO exemplifies the field's progress toward more efficient and accurate object detection models suitable for real-time applications.



III. COMPARATIVE ANALYSIS OF TRACKING ALGORITHMS

Tracking algorithms can be evaluated across multiple dimensions, including accuracy, robustness, speed, and the ability to handle challenging scenarios. This section provides a comparative analysis of popular tracking algorithms relevant to real-time applications. The CSRT (Channel and Spatial Reliability Tracking) algorithm is known for its high accuracy and robustness to partial occlusion, making it effective for non-rectangular objects. However, it has a moderate computational cost and may struggle with significant appearance changes, typically achieving 25-35 FPS on modern hardware. In contrast, the KCF (Kernelized Correlation Filters) algorithm offers very fast processing speeds of over 100 FPS and good accuracy in controlled environments, but it has limited ability to handle scale changes and is sensitive to occlusion, making it more suitable for applications prioritizing speed over robustness. The MOSSE (Minimum Output Sum of Squared Error) algorithm is extremely fast, reaching 600+ FPS with a simple implementation, but it is less accurate than newer methods and struggles with complex motion and appearance changes, making it best suited for resource-constrained environments. MedianFlow is good at detecting tracking failures and works well for predictable motion, although it fails in cases of fast motion or significant appearance changes, achieving moderate speeds of 60-80 FPS with built-in quality assessment. GOTURN (Generic Object Tracking Using Regression Networks) learns the generic relationship between object appearance and motion, but it requires a GPU for real-time performance and is less accurate than some traditional methods, benefiting from offline training and having moderate online computational requirements. Lastly, the SiamRPN (Siamese Region Proposal Network) offers high accuracy with a good balance of speed and performance, but it has a more complex implementation and higher computational requirements, typically achieving 50-80 FPS on GPU hardware.

For the current project, CSRT was selected as the primary tracking algorithm due to its robust performance across various scenarios, including partial occlusion and non-rigid objects, while still maintaining acceptable real-time performance. The spatial reliability map in CSRT allows for more adaptive tracking by focusing on the most reliable

parts of the target object, making it particularly suitable for challenging real-world scenarios. Real-time object detection and tracking systems find applications across numerous domains, including surveillance and security for automated monitoring of restricted areas, suspicious behavior detection, person re-identification across camera networks, and traffic monitoring. In robotics and autonomous systems, the technology aids in navigation and obstacle avoidance, target following for service robots, human-robot interaction, and drone-based tracking. Furthermore, in augmented reality, the systems enable interactive experiences, real-time overlays on tracked objects, and gesture recognition. Sports analytics benefit from player tracking and performance analysis, as well as ball tracking and automated event detection. Retail analytics utilizes these systems for customer behavior analysis, queue management, and product interaction tracking. In healthcare and assistive technologies, applications include patient monitoring systems, mobility assistance for the visually impaired, rehabilitation progress tracking, and surgical tool tracking. Industrial applications encompass quality control, process monitoring, worker safety systems, and assembly line automation. Finally, in smart cities, the technology can optimize traffic flow, monitor pedestrian density, and coordinate emergency responses. The system developed in this project is particularly well-suited for applications requiring interactive object selection and following, such as autonomous camera systems that can track subjects of interest, assistive robots that can fetch specified objects, and security systems that allow operators to monitor suspicious items or individuals continuously. By addressing these diverse applications, the Follow Anything project not only demonstrates the versatility of real-time detection and tracking systems but also highlights their potential to transform various industries through enhanced automation and intelligent interaction.

IV. DISCUSSION

The implemented system demonstrates several notable strengths and limitations. Among its key strengths is an intuitive three-step workflow that simplifies operation, making it accessible to users with varying levels of technical expertise. The hybrid detection-tracking approach effectively balances accuracy and speed, enhancing overall performance. Additionally, the threading architecture maintains a responsive user interface during processing, allowing users to interact with the system without noticeable delays. The CSRT tracker provides reliable performance and good adaptability in various conditions, ensuring effective tracking of selected objects. However, the system also has primary weaknesses, including the requirement for manual triggering for initial detection, which limits usability in scenarios needing continuous detection. It currently supports only single-object tracking, restricting applicability in environments where multiple objects need to be tracked simultaneously. The system is moderately computationally intensive, necessitating decent hardware specifications to operate effectively, and it lacks persistent memory of previously tracked objects between sessions, which may hinder user experience in long-term applications.

The development process revealed several significant challenges, including technical challenges such as integrating deep learning models with traditional tracking algorithms, ensuring thread safety in the PyQt environment, optimizing for real-time performance on consumer hardware, and handling edge cases like failed detections and lost tracking. Implementation difficulties included creating a robust object selection mechanism from detection results, converting between various image formats (OpenCV, QImage), maintaining tracking through challenging conditions, and balancing component responsibilities between threads. To resolve these challenges, the team engaged in iterative testing and optimization of tracker parameters, careful design of the threading architecture with signal-slot communication, comprehensive error handling for failure cases, and optimization of critical processing paths.

In comparison with related work, the system shows both similarities and differences. Similarities include a hybrid detection-tracking approach that mirrors recent academic research, a user-centric design that aligns with commercial tracking applications, and performance characteristics comparable to similar open-source projects. Novel contributions of the system include a simplified three-step workflow that improves accessibility, the integration of YOLO with CSRT for efficient operation, a PyQt implementation that offers cross-platform compatibility, and an open architecture that allows for easy extension. The system also boasts comparative advantages such as being more accessible than commercial alternatives, offering more customization than closed-source options, demonstrating better initial detection than pure tracking solutions, and being more efficient than continuous detection approaches.

Several promising directions for enhancement have been identified, including short-term improvements like implementing multi-object tracking capabilities, adding automatic redetection after tracking loss, enhancing the user interface with additional visualization options, and improving error handling and recovery mechanisms. Long-term

enhancements could involve integrating tracking-by-detection for continuous operation, implementing object reidentification for persistent tracking, adding camera calibration for distance estimation, and developing action recognition based on tracking data. Research directions include exploring transformer-based tracking algorithms, investigating zero-shot detection for novel objects, researching federated learning for model improvement, and studying adaptive tracking parameter optimization.

The system shows promise for various real-world applications, including security and surveillance for monitoring individuals or objects, following subjects of interest in surveillance footage, and tracking unauthorized access to restricted areas. In human-computer interaction, it can facilitate gesture-based control systems, hands-free interfaces for users with disabilities, and interactive installations. In robotics and automation, the system can be integrated into robot vision systems for effective object following, automated camera systems for events, and quality control in manufacturing. Specialized domains such as sports analysis for player tracking, wildlife monitoring and research, and assistive technology for visually impaired users also benefit from its capabilities. By addressing these diverse applications, the Follow Anything project not only demonstrates the versatility of real-time detection and tracking systems but also highlights their potential to transform various industries through enhanced automation and intelligent interaction.

V. CONCLUSION

In conclusion, the Follow Anything project represents a significant advancement in the field of real-time object detection and tracking systems. By integrating a hybrid detection-tracking approach with an open-set methodology, the system is capable of recognizing and tracking dynamically detected objects in various conditions without predefined categories. The strengths of the system, such as its intuitive user interface and reliable tracking performance, make it suitable for a wide range of applications across different industries. While challenges remain, particularly in terms of multi-object tracking and computational requirements, the identified areas for future improvement and research directions provide a clear pathway for further development. Overall, this project not only contributes to the existing body of knowledge in computer vision and machine learning but also has the potential to drive innovation in automation and intelligent interaction, paving the way for next-generation tracking systems that can adapt to the complexities of real-world environments.

REFERENCES

1. Redmon, J., & Farhadi, A. (2018). YOLOv3: An Incremental Improvement. arXiv preprint arXiv:1804.02767.
2. Zhang, Z., & Wang, Y. (2020). A Survey on Object Tracking: Algorithms and Applications. *IEEE Transactions on Intelligent Transportation Systems*, 22(3), 1536-1551.
3. F. M. Al-Sharif, M. A. Al-Ghamdi, and A. M. Al-Harbi, "Real-time Object Detection and Tracking System Using Deep Learning," 2021 IEEE 11th International Conference on Control System, Computing and Engineering (ICCSCE), Penang, Malaysia, 2021, pp. 1-6, doi: 10.1109/ICCSCE52702.2021.9674885.
4. Kodi, D. (2024). Performance and Cost Efficiency of Snowflake on AWS Cloud for Big Data Workloads. *International Journal of Innovative Research in Computer and Communication Engineering*, 12(6), 8407–8417. <https://doi.org/10.15680/IJRCCE.2023.1206002>
5. K. A. H. A. Alshahrani, H. A. H. Alshahrani, M. M. Alshahrani, and H. A. Alzahrani, "Real-Time Object Detection and Tracking Using YOLO and CSRT," 2022 International Conference on Computer Science and Artificial Intelligence (CSAI), 2022, pp. 1-7, doi: 10.1109/CSAI55884.2022.9793085.
6. Wang, C., & Wang, Y. (2021). A Review of Object Tracking Algorithms. *Journal of Visual Communication and Image Representation*, 77, 103059.
7. Li, Y., & Zhang, Y. (2020). Deep Learning for Object Detection: A Review. *Journal of Computer Science and Technology*, 35(4), 719-740.
8. G. Wang, Y. Zhang, and D. Zhang, "A Survey on Object Tracking: Algorithms and Applications," *IEEE Transactions on Intelligent Transportation Systems*, vol. 22, no. 3, pp. 1536-1551, 2021.
9. G. Xu, J. Xu, and Y. Zhang, "Real-time Object Tracking Based on Improved CSRT Algorithm," 2022 2nd International Conference on Computer Vision and Image Processing (CVIP), 2022, pp. 1-6, doi: 10.1109/CVIP57066.2022.00001.



INTERNATIONAL
STANDARD
SERIAL
NUMBER
INDIA



INTERNATIONAL JOURNAL OF INNOVATIVE RESEARCH

IN SCIENCE | ENGINEERING | TECHNOLOGY

 9940 572 462  6381 907 438  ijirset@gmail.com



www.ijirset.com

Scan to save the contact details