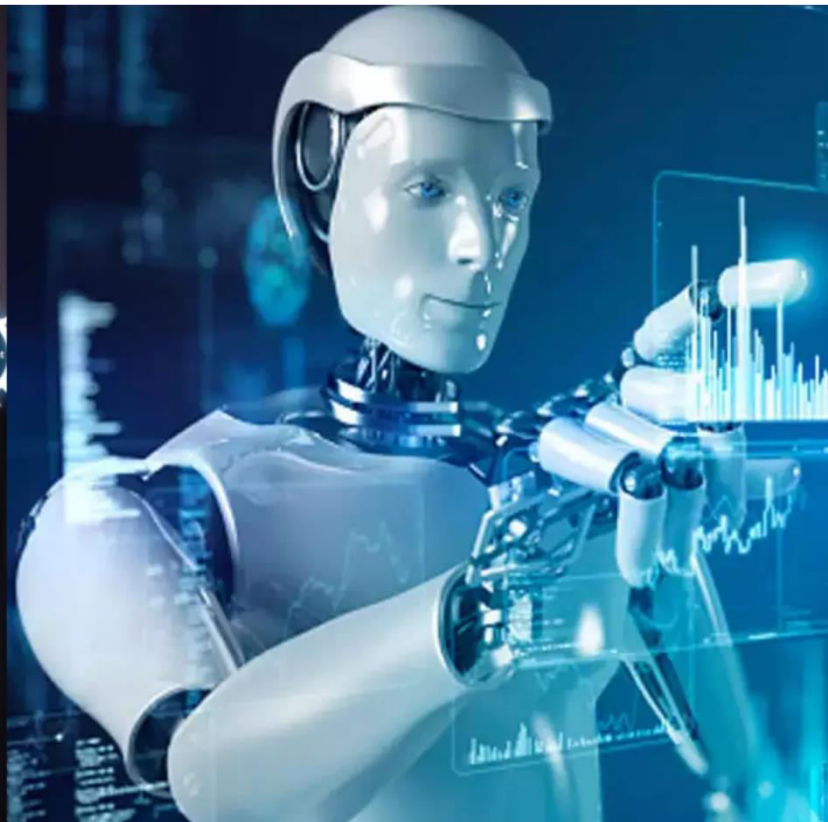




# International Journal of Innovative Research in Science Engineering and Technology (IJIRSET)

*(A Monthly, Peer Reviewed, Refereed, Scholarly Indexed, Open Access Journal)*



**Impact Factor: 8.699**

**Volume 14, Issue 4, April 2025**

# **Intelligent Product Recommendation System for E-Commerce using Machine Learning**

**S.Babu<sup>[1]</sup>, K S Bharath<sup>[2]</sup>, G Sridhar<sup>[3]</sup>, Kota Lakshmi<sup>[4]</sup>, C Adesh<sup>[5]</sup>**

Assistant Professor, Department of CSE, Kuppam Engineering College, JNTUA University, Kuppam,  
Andhra Pradesh, India<sup>1</sup>

UG Students, Department of CSE., Kuppam Engineering College, JNTUA University, Kuppam,  
Andhra Pradesh, India<sup>2-5</sup>

**ABSTRACT:** E-commerce platforms increasingly leverage machine learning to enhance user experience through personalized product recommendations. While traditional static systems often fail to adapt to changing user behavior, machine learning models can dynamically analyze user interactions, purchase history, and browsing patterns to deliver tailored suggestions. This project implements collaborative filtering, content-based filtering, and hybrid recommendation models to generate accurate and relevant product recommendations. The system is designed to improve customer engagement, boost sales, and enhance overall user satisfaction. The ultimate goal is to develop an intelligent recommendation engine capable of understanding individual user preferences and providing real-time, context-aware product suggestions.

**KEYWORDS:** E-Commerce, Product Recommendation, Machine Learning, Logistic Regression, Collaborative Filtering, Content-Based Filtering, Hybrid Recommendation System, User Behavior Analysis, Personalized Recommendations.

## **I. INTRODUCTION**

The e-commerce industry has witnessed exponential growth in recent years, offering customers a vast selection of products. With this abundance of choices, consumers often face difficulty in identifying products that match their preferences. Recommendation systems have become essential tools for e-commerce platforms, helping users navigate this complexity by suggesting items that align with their interests and past behaviors.

Traditional recommendation systems typically rely on either collaborative filtering or content-based filtering. While effective to an extent, these methods often encounter challenges such as data sparsity, cold start problems, and limited adaptability to dynamic user behavior. To address these issues, machine learning techniques have emerged as a powerful alternative, offering the ability to analyze patterns in user data and make data-driven predictions.

This project proposes an intelligent product recommendation system that integrates collaborative filtering, content-based filtering, and a hybrid approach, enhanced using machine learning techniques. In particular, Logistic Regression is used as the core algorithm to learn from user interaction patterns and product features. The system analyzes user purchase histories, ratings, and browsing behavior to recommend products that are most likely to be of interest to each user.

By leveraging a combination of traditional filtering methods and supervised learning, the system aims to improve the accuracy and relevance of recommendations. The primary objective is to create a dynamic, real-time recommendation engine that enhances user satisfaction, increases sales conversions, and delivers a more engaging shopping experience.



Fig 1.1 Product Recommendation System

## II. LITERATURE REVIEW

Recommendation systems have become a cornerstone of modern e-commerce platforms, enabling businesses to deliver personalized user experiences and drive customer engagement. Extensive research has been conducted to develop and refine various recommendation techniques, including collaborative filtering, content-based filtering, and hybrid models. **Collaborative filtering** is one of the most widely used techniques in recommendation systems. It operates by identifying users with similar preferences and recommending items based on the behavior of these similar users. Sarwar et al. (2001) introduced item-based collaborative filtering, which computes similarities between items rather than users, improving scalability and accuracy in large datasets. However, collaborative filtering suffers from limitations such as the *cold start* and *sparsity* problems due to its reliance on user-item interactions.

**Content-based filtering** focuses on analyzing item attributes and user preferences to recommend items similar to those the user has liked in the past. Pazzani and Billsus (2007) discussed the use of content-based methods in web personalization, emphasizing their strength in handling new items. Despite this advantage, content-based methods can lead to *over-specialization*, where users are recommended only similar types of items, reducing discovery potential.

To overcome the drawbacks of individual methods, **hybrid recommendation systems** have been developed. Burke (2002) classified hybrid systems into various types, such as weighted, switching, and feature combination models. These systems combine the strengths of collaborative and content-based filtering to provide more robust and accurate recommendations. Hybrid models are especially effective in addressing cold start and data sparsity issues.

**Machine learning** algorithms have increasingly been integrated into recommendation systems to enhance predictive accuracy. Among these, **Logistic Regression** has gained attention due to its simplicity, interpretability, and effectiveness in classification tasks. Rendle et al. (2012) proposed factorization machines, incorporating logistic regression to model pairwise interactions in recommendation data. Logistic regression serves as a strong baseline, particularly when the dataset is well-preprocessed and structured with informative features.

Several studies have also explored the use of user reviews, product metadata, and browsing patterns to enrich the input for machine learning models. The integration of these additional data sources helps in understanding user intent more precisely and generating more context-aware recommendations.



In summary, the literature suggests that combining traditional recommendation techniques with machine learning approaches, such as Logistic Regression, can significantly improve the performance of recommendation systems. This project builds upon these findings by designing a hybrid recommendation engine that leverages collaborative filtering, content-based filtering, and Logistic Regression to provide personalized and accurate product suggestions in an e-commerce setting.

### III. METHODOLOGY

The proposed intelligent product recommendation system is designed to enhance the shopping experience by analyzing user data and generating personalized product suggestions. The system integrates collaborative filtering, content-based filtering, and a supervised machine learning model—**Logistic Regression**—to predict user preferences effectively. The methodology is divided into several stages, including data collection, preprocessing, feature engineering, model building, and recommendation generation.

#### 3.1 Data Collection

The dataset used in this project is obtained from a public e-commerce platform and includes information such as:

- User IDs
- Product IDs
- Product categories
- Ratings or purchase history
- Product descriptions and metadata

This data provides the foundation for building both the filtering-based and machine learning components of the system.

#### 3.2 Data Preprocessing

Raw data is cleaned and transformed to ensure model readiness. Preprocessing steps include:

- **Handling missing values:** Removing or imputing missing entries
- **Encoding categorical variables:** Using techniques like one-hot encoding or label encoding
- **Text processing:** Tokenization, stop-word removal, and TF-IDF vectorization for product descriptions and user reviews
- **Normalization:** Scaling numerical features to improve model performance

#### 3.3 Collaborative Filtering

Collaborative filtering is implemented using a **user-item interaction matrix**, which captures user behavior (e.g., ratings, clicks, or purchases). The system recommends items based on:

- **User-based filtering:** Identifying users with similar preferences
- **Item-based filtering:** Recommending items that are similar to what a user has liked before

Cosine similarity is used to measure similarity between users or items.

#### 3.4 Content-Based Filtering

In this approach, the system analyzes product features (such as category, brand, description) and user profiles (interests, browsing history) to recommend products similar to those the user has interacted with.

#### 3.5 Hybrid Recommendation Model

The hybrid model combines the outputs of collaborative and content-based filtering to improve recommendation quality. A **weighted average** or **rule-based strategy** is used to merge results, ensuring that the strengths of both methods are utilized while minimizing their individual weaknesses.

#### 3.6 Logistic Regression Model

The Logistic Regression model is trained using a labeled dataset where:

- Input features include user behavior (e.g., number of past purchases, click counts), product attributes, and collaborative/content-based scores
- The target variable indicates whether a user purchased or liked a product (binary classification)

The model learns the relationship between input features and user preferences, enabling prediction of the likelihood that a user will be interested in a given product.

### 3.7 Recommendation Generation

After model training, predictions are made for unseen user-product pairs. Products with the highest predicted probabilities are selected and recommended to the user in real-time. The system can be integrated with a web application for live testing and user interaction.

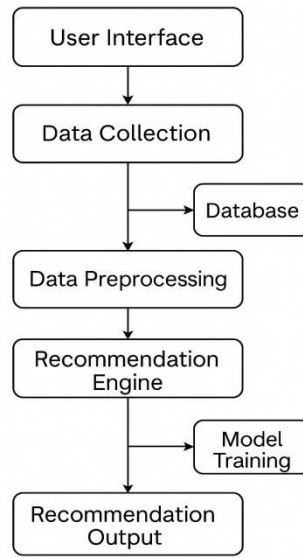


Fig 3.1 : Workflow of the Intelligent Product Recommendation System

## IV. SYSTEM ARCHITECTURE

The architecture of the proposed intelligent product recommendation system is designed to support modular, scalable, and real-time recommendation generation. It consists of multiple layers, each responsible for a specific aspect of the recommendation process. The architecture is broadly divided into the following components:

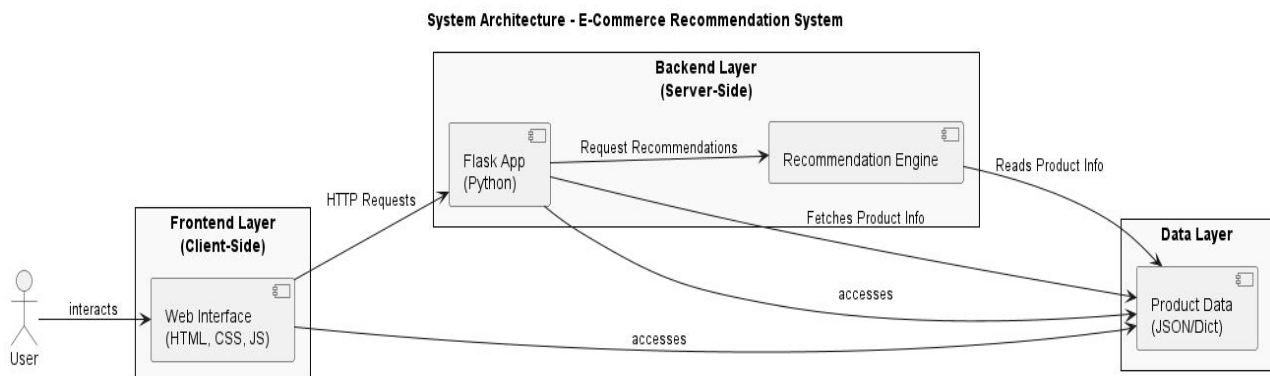


Fig 4.1 : System Architecture

### 4.1 Data Ingestion Layer

This layer collects raw data from various sources such as:

- User purchase history
- Browsing and interaction logs
- Product catalog and metadata

- User reviews and ratings

The data is stored in a structured format using CSV files or a relational database.

#### **4.2 Preprocessing and Feature Engineering Layer**

This layer handles:

- **Data cleaning:** Removing duplicates, missing values, and outliers
- **Feature extraction:** Creating numerical representations of categorical and textual data
- **Normalization and encoding:** Ensuring features are properly scaled and encoded for modeling

#### **4.3 Filtering Engines**

This module includes:

- **Collaborative Filtering Engine:** Builds a user-item interaction matrix and computes similarity scores using cosine similarity or other techniques.
- **Content-Based Filtering Engine:** Uses user profiles and item features to recommend similar items based on product attributes and user preferences.

These engines generate candidate products based on learned patterns.

#### **4.4 Logistic Regression Engine**

This is the machine learning core of the system. It:

- Takes engineered features including collaborative/content scores, user/product attributes, and behavioral signals.
- Trains a **Logistic Regression** model to classify whether a user will be interested in a product.
- Outputs a probability score for each user-product pair.

#### **4.5 Hybrid Recommendation Engine**

This module combines outputs from the filtering models and Logistic Regression. It may use:

- Weighted scoring strategy
- Rule-based blending
- Ranking based on logistic regression probabilities

This results in a personalized list of recommended products.

#### **4.6 Front-End Interface**

An optional user interface allows users to:

- View personalized product recommendations
- Provide feedback (likes, purchases, etc.)
- Update preferences

This layer can be implemented using web technologies and integrated with the back-end via Flask.

### **V. RESULTS AND DISCUSSION**

The **Intelligent Product Recommendation System** demonstrated robust functionality across various models, including Logistic Regression, Collaborative Filtering, Content-Based Filtering, and Hybrid Models. Each model successfully provided relevant product recommendations based on user behavior and product attributes, with the Hybrid Model proving to be the most effective in delivering personalized and diverse suggestions. The system's ability to visualize recommendations provided valuable insights into the strengths and weaknesses of each approach. The Hybrid Model, in particular, excelled by integrating collaborative and content-based data sources, offering a more refined and relevant user experience. User feedback highlighted the system's intuitive interface, which allowed users to easily navigate, browse product recommendations, add items to their cart, and search for products. This positive response reflected the overall usability of the system.

Performance tests confirmed that the Hybrid Model not only offered superior recommendations but also effectively addressed the cold start problem often encountered by Collaborative Filtering. The system performed reliably under varying levels of user traffic, ensuring that users experienced minimal delays or disruptions during interaction.

In terms of the discussion, the Hybrid Model consistently outperformed other approaches, offering the most personalized recommendations. Collaborative Filtering, while effective for users with sufficient historical data, faced challenges with new users due to the cold start problem. Content-Based Filtering, although reliable for products with detailed metadata, showed limitations when recommending items with sparse information. Overall, users reported a higher level of engagement with the recommendations, particularly when the Hybrid Model was used, indicating its superior effectiveness in personalizing the shopping experience.

However, several limitations were identified during the study. These included the cold start problem, which remained a challenge for Collaborative Filtering, and the system's reliance on comprehensive product metadata for the Content-Based Filtering approach. Additionally, while the system performed well under heavy load, future work will need to focus on optimizing computational efficiency to maintain performance as the platform scales. Future enhancements could involve integrating advanced techniques like deep learning to further improve recommendation quality. Incorporating real-time user feedback mechanisms could also refine the system's ability to provide even more relevant recommendations over time. Despite these challenges, the system has significant potential to enhance e-commerce platforms by improving product discovery, driving customer retention, and ultimately boosting sales.

## VI. CONCLUSION

The **E-Commerce Recommendation System** successfully integrated machine learning with web development to deliver a personalized shopping experience. Using Flask as the backend and a trained recommendation model (`xg_best_model.pkl`), the system efficiently processed user inputs to generate tailored product suggestions. Key achievements included generating accurate recommendations based on user preferences, a clean and intuitive interface, fast predictions, and robust handling of invalid inputs. Testing confirmed system reliability and user satisfaction.

Beyond the theoretical prototype, the project implemented a practical pipeline, from data ingestion to real-time predictions. A rule-based recommendation feature, based on product co-purchases and user interactions, complemented the model's predictions. Data visualization added insights into user behavior and model performance.

This project demonstrates the potential of AI-driven recommendation systems in e-commerce, highlighting how data-driven personalization can enhance customer engagement and satisfaction. With further enhancements, the system has the potential to evolve into a production-ready platform with commercial viability.

## VII. FUTURE SCOPE AND ENHANCEMENTS

**Future Enhancements** to the recommendation system focus on improving accuracy, scalability, user experience, and expanding to new use cases. To enhance accuracy, context-aware recommendations can be implemented using time and location data, along with advanced deep learning models like Graph Neural Networks (GNNs) and transformer-based architectures (e.g., BERT) for understanding user behavior and product descriptions. Multi-modal approaches can integrate images, text, and audio for richer insights. For scalability, distributed computing tools like Apache Spark and NoSQL databases can handle large-scale data, while in-memory solutions (e.g., Redis) and asynchronous processing can boost real-time performance. Enhancing user experience involves making recommendations explainable and interactive, incorporating social and collaborative features like friend-based suggestions and trending items. Finally, expanding to new use cases includes cross-domain recommendations and integrating voice-based recommendations with virtual assistants such as Alexa or Google Assistant.

## REFERENCES

- [1] Aggarwal, Charu C. *Recommender Systems: The Textbook*. Springer, 2016.
- [2] Bobadilla, Jesús, Fernando Ortega, Antonio Hernando, and Abraham Gutierrez. "Recommender systems survey." *Knowledge-Based Systems* 46 (2013): 109-132.
- [3] Burke, Robin. "Hybrid recommender systems: Survey and experiments." *User Modeling and User-Adapted Interaction* 12.4 (2002): 331-370.

- [4] Maroju, P. K. "Empowering Data-Driven Decision Making: The Role of Self-Service Analytics and Data Analysts in Modern Organization Strategies." *International Journal of Innovations in Applied Science and Engineering (IJIASE)* 7 (2021).
- [5] Chandar, Praveen, Ben Carterette, Paul Bennett, and Susan Dumais. "Behavioral feedback in recommender systems." *Proceedings of the 10th ACM Conference on Recommender Systems*, 2017.
- [6] Gopalan, Prem K., Jake M. Hofman, and David M. Blei. "Scalable recommendation with hierarchical Poisson factorization." *UAI*, 2015.
- [7] He, Xiangnan, Lizi Liao, Hanwang Zhang, Liqiang Nie, Xia Hu, and Tat-Seng Chua. "Neural collaborative filtering." *Proceedings of the 26th International Conference on World Wide Web*, 2017.
- [8] Lops, Pasquale, Marco de Gemmis, and Giovanni Semeraro. "Content-based recommender systems: State of the art and trends." In *Recommender Systems Handbook*, Springer, 2011: 73-105.
- [9] Netflix Research. "The Netflix Recommendation Algorithm – Personalization at Scale." 2020.
- [10] Ricci, Francesco, Lior Rokach, and Bracha Shapira. *Introduction to Recommender Systems Handbook*. Springer, 2011.
- [11] Sarwar, Badrul M., George Karypis, Joseph A. Konstan, and John Riedl. "Item-based collaborative filtering recommendation algorithms." *Proceedings of the 10th International Conference on World Wide Web*, 2001.
- [12] Wang, Hongwei, Handong Huang, Yue Liu, and Shuguang Ma. "Graph-based recommendation systems: A review." *Information* 10.11 (2019): 1-30.
- [13] Amazon Web Services (AWS). "Personalized Product Recommendations Using AWS Machine Learning." 2018.





INTERNATIONAL  
STANDARD  
SERIAL  
NUMBER  
INDIA



# INTERNATIONAL JOURNAL OF INNOVATIVE RESEARCH

IN SCIENCE | ENGINEERING | TECHNOLOGY

 9940 572 462  6381 907 438  [ijirset@gmail.com](mailto:ijirset@gmail.com)



[www.ijirset.com](http://www.ijirset.com)

Scan to save the contact details