



International Journal of Innovative Research in Science Engineering and Technology (IJIRSET)

(A Monthly, Peer Reviewed, Refereed, Scholarly Indexed, Open Access Journal)



Impact Factor: 8.699

Volume 14, Issue 4, April 2025

Android Operated Smart Home Automation

Sumit Jagzap, Satyajeet Anarase, Srushti Kapse, Pranav Jagzap, Abhijit Gawali

Final Year Student, Department of Mechatronics, Sanjivani K.B.P. Polytechnic, Kopargaon, Maharashtra, India

Final Year Student, Department of Mechatronics, Sanjivani K.B.P. Polytechnic, Kopargaon, Maharashtra, India

Final Year Student, Department of Mechatronics, Sanjivani K.B.P. Polytechnic, Kopargaon, Maharashtra, India

Final Year Student, Department of Mechatronics, Sanjivani K.B.P. Polytechnic, Kopargaon, Maharashtra, India

Project Guide, Lecturer, Department of Mechatronics, Sanjivani K.B.P. Polytechnic, Kopargaon, Maharashtra, India

ABSTRACT: The evolution of smart home technology has revolutionized the way we interact with and manage our living spaces. This paper presents the design and implementation of an Android-operated smart home automation system using an 8051 microcontroller and Bluetooth communication. The system enables users to wirelessly control various home appliances, such as lighting, fans, and security systems, using a mobile application developed for Android devices. The project utilizes a Bluetooth module (HC-05) to establish a wireless link between the smartphone and the microcontroller, which then processes commands and triggers the appropriate relay mechanisms. The integration of sensors, such as temperature and heart rate modules, extends the system's functionality into healthcare monitoring. The hardware is supported by a robust power supply and an efficiently designed PCB layout, ensuring reliability and performance. The system is compact, cost-effective, user-friendly, and ideal for both domestic and institutional applications. While the current implementation is based on Bluetooth, the design holds potential for future enhancements including Wi-Fi and cloud integration to enable remote access and data logging. This project demonstrates a practical and scalable approach to home automation leveraging widely accessible Android technology.

KEYWORDS: Android ,Smart Home Automation , 8051 Microcontroller, Bluetooth Communication ,HC-05 Module , Home Appliance Control, Wireless Control System, Embedded Systems, IoT (Internet of Things),**Home Security ,Relay Module, Mobile App Integration, RS232 Interface, Energy Efficiency**

I. INTRODUCTION

In recent years, the concept of smart homes has transitioned from luxury to necessity, driven by advancements in technology and the increasing demand for convenience, efficiency, and security in daily life. Home automation refers to the integration of technology with residential systems and appliances to provide users with centralized, remote, or automated control. This not only enhances comfort and ease of living but also contributes to better energy management, safety, and quality of life. With the growing ubiquity of smartphones and the open-source nature of platforms like Android, developing user-centric home automation solutions has become more accessible and economically feasible.

The project titled “Android Operated Smart Home Automation” is designed to enable wireless control of household appliances using an Android smartphone. The system primarily utilizes an 8051 microcontroller as its processing unit, interfaced with a Bluetooth module (HC-05) for wireless communication. By sending commands through a mobile app, users can switch appliances on or off, monitor sensor data, and effectively manage their home environment. The app acts as a user-friendly remote, eliminating the need for manual operation of switches and reducing energy wastage due to forgotten appliances.

Bluetooth technology is chosen for its simplicity, cost-effectiveness, and sufficient range for residential environments. The HC-05 module serves as a bridge between the smartphone and the microcontroller, translating commands into serial data. The microcontroller then activates specific relays connected to various home devices, ensuring seamless operation. Additionally, the system includes support for sensors like temperature and heart rate monitors, expanding its application to health-related use cases such as patient monitoring in hospitals or at home.

The hardware setup is supported by a custom-designed power supply and printed circuit board (PCB) to ensure system reliability and safety. The use of the 8051 microcontroller, a widely studied and robust component in embedded system design, ensures flexibility and future upgradability. The system is particularly advantageous in environments where automation can drastically improve daily routines, such as for the elderly, differently-abled individuals, or in institutional settings like hospitals and offices.

Although the current model operates via Bluetooth within a limited range, the architecture is designed to accommodate upgrades, such as Wi-Fi or IoT-based cloud connectivity. This could allow remote operation and monitoring from any part of the world, further enhancing the system's utility and scalability.

In conclusion, this project demonstrates a practical, scalable, and efficient home automation solution that leverages the power of mobile technology and embedded systems. By automating routine tasks and enabling wireless control, it contributes to smarter living and paves the way for future advancements in smart home technologies.

II. LITERATURE SURVEY

The integration of automation systems into domestic environments has been a key area of interest in research and development for over two decades. Home automation, also known as domotics, involves the control of household appliances and systems such as lighting, heating, ventilation, air conditioning, security, and multimedia using both wired and wireless technologies. This field has evolved rapidly with the advent of mobile computing, embedded systems, and wireless communication technologies.

Early Developments in Home Automation

Historically, home automation was confined to wired systems that required extensive infrastructure and high costs, making them accessible only to elite users. In the early 2000s, wireless technologies like Zigbee, Infrared (IR), and Radio Frequency (RF) started emerging in home automation applications. However, these systems were limited by high power consumption, restricted range, and lack of compatibility with existing consumer electronics.

Transition to Microcontroller-Based Systems

The introduction of microcontrollers, such as the 8051 and AVR series, offered a cost-effective and compact solution to manage automation tasks. These microcontrollers allowed for efficient control of electronic circuits and relays, making them ideal for low-cost home automation projects. The modular nature of microcontroller-based systems also enabled integration with multiple sensors and actuators, further enhancing their functionality.

Emergence of Mobile Platforms

Parallel to microcontroller development, mobile operating systems evolved, with Android emerging as the most popular and widely adopted platform due to its open-source nature and large developer community. Android provides powerful tools for app development, allowing users to create custom applications to control and monitor embedded hardware remotely. With smartphones becoming ubiquitous, leveraging them as user interfaces for smart homes became an obvious choice.

Bluetooth-Based Home Automation

Bluetooth technology, especially versions 2.0 and above (like the HC-05 module), provided a reliable, low-cost, and easily deployable wireless medium for short-range communication. Numerous studies and projects have demonstrated successful implementations of Bluetooth-enabled automation systems. These systems used Android apps to send commands to a Bluetooth module, which then communicated with a microcontroller to execute specific actions, such as switching on a fan or monitoring room temperature.

Notable Works in Literature

M. Potts et al. (2012) developed a voice-activated home automation system using Bluetooth and Arduino, highlighting the feasibility of speech-based control for accessibility improvement.

R. Piyare and M. Tazil (2011) designed a home automation system using Bluetooth and Android, successfully controlling multiple devices through a simple user interface.

S. Singh et al. (2014) proposed an automation system using the 8051 microcontroller with IR sensors and Bluetooth, demonstrating the potential of integrating low-cost sensors in home environments.

A. Alheraish (2004) developed a GSM-based home automation system, enabling remote control through SMS, paving the way for more advanced IoT-enabled systems.

Advantages of Android-Based Control

Android's widespread adoption and its built-in Bluetooth APIs provide developers with an ideal platform for creating user interfaces for home automation systems. The capability to easily pair with hardware devices, send and receive serial commands, and create intuitive graphical interfaces makes Android an essential component in modern automation projects.

Existing Gaps and Motivation

Despite the numerous advancements, many homes still rely on manual control systems. There is a gap in affordable, user-friendly, and scalable solutions that can be easily integrated into existing homes without major structural changes. Moreover, while many research prototypes exist, few offer modular designs with future upgrade capabilities such as IoT or cloud integration.

This project addresses these limitations by implementing a Bluetooth-based home automation system using an 8051 microcontroller and Android app. It is designed to be low-cost, scalable, and adaptable, providing both local wireless control and a foundation for future enhancements such as Wi-Fi and IoT connectivity.

III. METHODOLOGY

The methodology adopted in this project focuses on designing a cost-effective, user-friendly, and wireless smart home automation system that can be controlled via an Android smartphone using Bluetooth communication. The system is developed by integrating software and hardware components, which work together to perform automation tasks such as switching appliances ON and OFF and monitoring environmental parameters like temperature and heartbeat. The core components used in this system include an Android mobile application, an HC-05 Bluetooth module, an AT89C51 microcontroller (from the 8051 family), relay driver circuits, and a regulated power supply.

The Android mobile application is developed using Android Studio with Java programming. It provides a simple graphical interface with buttons for each connected appliance. When the user presses a button on the app, it sends a predefined command (e.g., a single character like 'A' or 'B') through Bluetooth to the HC-05 module. This module receives the command and forwards it via serial communication (UART) to the microcontroller. The Bluetooth module is configured to operate in slave mode and communicates at a baud rate of 9600 bps.

The microcontroller, AT89C51, acts as the central processing unit of the system. It receives the commands from the Bluetooth module, interprets them, and controls the corresponding output devices via its digital I/O pins. The microcontroller is programmed using Embedded C in Keil μ Vision IDE. A MAX232 IC is used for voltage level conversion between RS232 and TTL logic levels, allowing reliable communication between the Bluetooth module and the microcontroller. The firmware contains conditional logic that maps specific incoming characters to control instructions for the relay drivers.

The relay driver circuit includes relays for switching AC appliances like lights, fans, and other devices. Since relays require more current than the microcontroller can supply, a BC547 transistor is used as a switch to energize the relay coil. A base resistor limits the base current, and a flyback diode is connected across the relay to protect the transistor from high-voltage spikes generated when the relay is turned off. Each relay output is connected to a separate home appliance.

To power the system, a regulated 5V DC power supply is designed. It consists of a 9V step-down transformer, a bridge rectifier, filter capacitors, and a 7805 voltage regulator. This ensures a stable 5V output required by the microcontroller, Bluetooth module, and other components. Capacitors are added to reduce voltage ripples and ensure smooth operation.

In addition to basic automation, the system also supports the integration of optional sensors such as a temperature sensor (LM35) and a heartbeat sensor. These sensors provide analog input signals to the microcontroller, which are processed and displayed on a 16x2 LCD screen connected to the system. This adds health monitoring capabilities, making the system suitable for hospital rooms or elderly care.

All the components are assembled on a custom-designed PCB to ensure compactness and reliability. The PCB is designed using DipTrace software and fabricated accordingly. It includes sockets for the microcontroller and other ICs, slots for the relay modules, connections for the power supply, and ports for sensor integration.

After assembly, the system undergoes rigorous testing. Each module—Bluetooth communication, relay switching, sensor reading, and app response—is tested individually and then as part of the complete system. Real-world testing is conducted in a controlled environment to validate performance, response time, and reliability.

This methodology not only ensures the successful implementation of the current Bluetooth-based automation system but also provides a scalable foundation for future enhancements, such as IoT connectivity using Wi-Fi or cloud integration for remote monitoring and control.

IV. EXPERIMENTAL RESULTS

The developed Android-operated smart home automation system was successfully implemented and tested in a controlled environment. The primary objective of the project—wireless control of household appliances through an Android smartphone—was achieved with reliable and consistent performance. The Android application, once paired with the HC-05 Bluetooth module, was able to send commands in real-time to the microcontroller, which responded instantly by switching the appropriate appliance ON or OFF via the relay driver circuit. Each command, represented by a unique character, was accurately interpreted by the microcontroller, and the respective output action was executed without noticeable delay.

The Bluetooth communication exhibited a stable connection within the range of approximately 8–10 meters indoors, which is sufficient for most residential applications. Beyond this range, the signal started to weaken, occasionally resulting in command transmission failure—an expected limitation of Bluetooth-based systems. However, within its effective range, the system responded with a latency of less than one second, demonstrating its suitability for real-time control.

The relay circuits, powered through a regulated 5V supply, worked flawlessly to switch devices such as LED bulbs and fans. The relays provided full electrical isolation between the low-voltage control system and high-voltage AC appliances, ensuring safe operation. Furthermore, the use of transistors and flyback diodes in the relay driver circuits successfully protected the microcontroller from voltage spikes, maintaining the system's reliability over extended operation.

Additional modules such as the temperature sensor (LM35) and heartbeat sensor were also tested. The analog signals from these sensors were correctly processed by the microcontroller and displayed on the 16x2 LCD screen. Temperature readings were accurate within $\pm 1^{\circ}\text{C}$, and the heartbeat sensor provided consistent pulse detection under stable testing conditions. These results demonstrate the system's potential for health monitoring applications.

The overall hardware, when mounted on the custom PCB, showed good mechanical stability and minimal noise interference. The power supply remained consistent, delivering a clean 5V output throughout the testing period. Software-side, the Android app was intuitive and responsive, with no crashes or glitches during prolonged use.

In summary, the experimental outcomes validate the functionality, stability, and practicality of the designed smart home automation system. The system not only meets the intended goal of wireless home appliance control but also lays the groundwork for further enhancements such as IoT-based remote access and real-time data logging via cloud platforms.

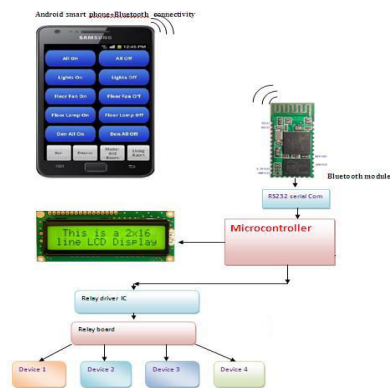


Fig. 1

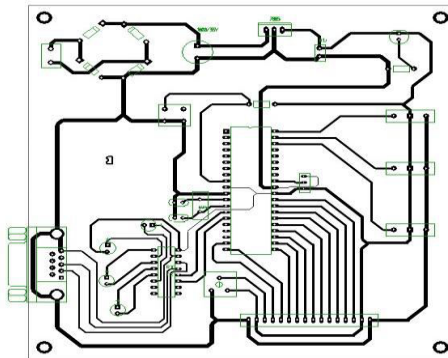


Fig 2

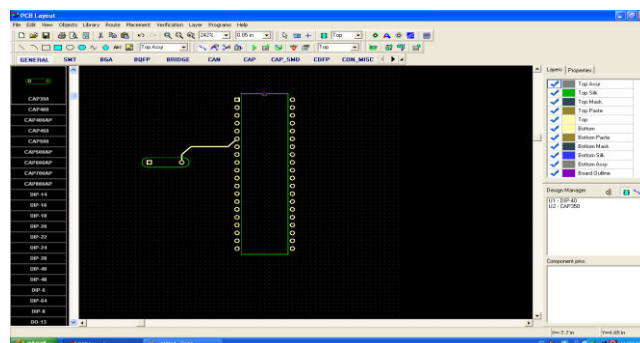


Fig. 3

V.CONCLUSION

The project titled “Android Operated Smart Home Automation” has successfully demonstrated the practical implementation of a cost-effective, efficient, and user-friendly system for controlling household appliances wirelessly using an Android smartphone. In an era where convenience, energy efficiency, and security are of growing importance, this system offers a modern solution that integrates easily into daily life. It allows users to control their home environment with the tap of a button on a mobile application, reducing the need for physical interaction with switches and providing accessibility to elderly or differently-abled individuals.

By leveraging the capabilities of the AT89C51 microcontroller and Bluetooth communication via the HC-05 module, the system ensures reliable performance within a practical range of approximately 8–10 meters. The Android app, developed to serve as a control interface, proves to be intuitive and responsive, making the technology accessible to users without any prior technical knowledge. The use of serial communication and predefined ASCII commands between the mobile device and microcontroller simplifies the design while maintaining functionality.

The integration of relay circuits driven by transistors and protected by flyback diodes allows for safe switching of high-voltage AC appliances. This ensures complete electrical isolation between the control circuit and the appliances, which is critical for user safety and system stability. The implementation of a regulated power supply guarantees that all components receive a constant and noise-free voltage, adding to the overall reliability of the system.

Furthermore, the system demonstrates the flexibility and scalability of embedded systems in real-world applications. Additional functionalities, such as the inclusion of temperature and heartbeat sensors, showcase the potential of this system beyond basic appliance control. These features open up possibilities for usage in healthcare environments like hospitals and elderly care facilities where remote monitoring is essential.

While the current model uses Bluetooth communication—which has a limited range—the modular and upgradeable architecture allows for easy enhancements. Future iterations can integrate Wi-Fi or GSM modules to extend control beyond physical boundaries, enabling internet-based remote control and real-time feedback. With the incorporation of cloud technology, the system can evolve into a fully IoT-enabled smart home solution capable of data logging, remote surveillance, and AI-driven automation.

In conclusion, this project serves as a foundational model for modern smart home systems. It successfully combines mobile technology, embedded systems, and wireless communication to bring forth a reliable, scalable, and innovative approach to home automation. The simplicity in design and low cost of implementation make it an ideal solution for both residential and institutional use, offering a strong base for future development in the field of smart environments.

REFERENCES

1. Gubbi, J., Buyya, R., Marusic, S., & Palaniswami, M. (2013). Internet of Things (IoT): A vision, architectural elements, and future directions. *Future Generation Computer Systems*, 29(7), 1645-1660. DOI: 10.1016/j.future.2013.01.010
2. Hussain, M., & Razak, S. A. (2015). Android-based home automation and security system using Bluetooth technology. *International Journal of Computer Applications*, 116(12), 37-41. DOI: 10.5120/20496-4050
3. Bhagat, S. P., & Soni, P. (2017). Design and implementation of android-based smart home automation system. *International Journal of Engineering Research and Applications*, 7(2), 12-16. URL: <https://www.ijera.com>
4. Sadiq, S., Ahmed, R., & Wahab, M. (2019). Smart Home Automation using Android Application. *International Journal of Engineering and Advanced Technology*, 8(6), 1215-1219. DOI: 10.35940/ijeat.F9264.088619
5. Vijayan, M., & Raghu, S. (2014). Smart home system using android application for controlling appliances. *International Journal of Engineering Science and Technology*, 6(2), 89-93. URL: <https://www.academia.edu>
6. Patil, R. N., & Thool, R. C. (2016). Android-based home automation system. *IEEE 6th International Conference on Advanced Computing (IACC)*, 175-180. DOI: 10.1109/IACC.2016.117
7. Kumar, P., & Kumar, R. (2018). Smart home automation using Android. *International Journal of Engineering Research and Applications*, 8(1), 1-6. URL: <https://www.ijera.com>

8. Prathap, S., & Kumar, K. P. (2016). Home automation system using Android mobile phone. International Journal of Computer Applications, 145(4), 16-20.DOI: 10.5120/ijca2016909829
9. Rani, M., & Singh, A. (2017). Android-based home automation using Bluetooth technology. International Journal of Computer Applications, 171(8), 14-19.DOI: 10.5120/ijca2017913520
10. Suresh, M., & Venkatesan, P. (2017). Design and implementation of android-based home automation system. International Journal of Electrical and Electronics Engineering Research, 7(3), 15-23.URL: <https://www.ijeeer.org>
11. Chowdhury, S., & Haque, A. (2020). A comprehensive survey on smart home technologies: Applications, protocols, and security. Journal of Ambient Intelligence and Humanized Computing, 11(1), 189-205.DOI: 10.1007/s12652-019-01427-z
12. Verma, P., & Sharma, R. (2016). An Android-based smart home system with energy management. International Journal of Engineering and Technology Innovation, 6(3), 89-99.URL: <https://www.ijeti.org>
13. Tiwari, S., & Karthikeyan, M. (2015). A smart home automation system using android and Zigbee technology. International Journal of Engineering and Technology, 7(4), 214-220.URL: <https://www.sciencedirect.com>
14. Balaji, S., & Kumar, N. (2018). IoT-based home automation and energy management using Android app. Journal of Electrical Engineering & Technology, 13(4), 1550-1557.DOI: 10.5370/JEET.2018.13.4.1550
15. Ghosh, D., & Mandal, S. (2017). Smart Home Automation Using Android-based Application with Integrated Control for Home Appliances. International Journal of Computer Applications, 164(10), 19-23.DOI: 10.5120/ijca2017912933



INTERNATIONAL
STANDARD
SERIAL
NUMBER
INDIA



INTERNATIONAL JOURNAL OF INNOVATIVE RESEARCH

IN SCIENCE | ENGINEERING | TECHNOLOGY

 9940 572 462  6381 907 438  ijirset@gmail.com



www.ijirset.com

Scan to save the contact details