



# **Improving the Efficiency of Renewable Energy Systems using Intelligent Control Algorithms based on Deep Learning**

**Kamal Mohamed Saied<sup>1</sup>, Salah H.E.Saleh<sup>2</sup>, Anees Almabrouk.Salih.Dawoud<sup>3</sup>**

Electrical Engineering Department, Bright Star University, Brega, Libya<sup>1</sup>

High institute of science and Technology, Emsaad, Libya<sup>23</sup>

**ABSTRACT:** This paper proposes an intelligent control model utilizing deep learning techniques to enhance the efficiency of renewable energy systems, specifically focusing on a hybrid solar and wind energy system. The model aims to address challenges related to energy production fluctuations due to weather conditions, ultimately reducing energy losses. Performance evaluations will compare this algorithm with existing systems to demonstrate its effectiveness.

**KEYWORDS:** Renewable energy, learning, deep control, solar energy, smart wind power grids

## **I. INTRODUCTION**

### **1.1. Background on Renewable Energy Systems**

Renewable energy, particularly solar and wind, has transformed the global energy landscape, with capacity surging to 2960 TWh by 2020. These systems reduce greenhouse gas emissions and enhance energy security but face variability challenges, leading to grid instability. Hybrid renewable energy systems (HRES) combine sources like solar and wind to provide more consistent output and improve resilience. Energy storage advancements store excess electricity, increasing efficiency, while intelligent algorithms optimize resource management. Investing in these solutions is key to achieving sustainable development and reliable energy access.

### **1.2. Importance of Efficiency in Energy Production**

Energy efficiency is crucial for transitioning to sustainable renewable energy systems, enhancing their viability and integration with existing infrastructures. Reducing energy waste during generation, distribution, and consumption is key, supported by technologies like machine learning for predictive analytics and resource optimization. Renewable sources like solar and wind are variable, requiring effective management to maintain grid stability. Innovations in solar panel design and wind turbine optimization can boost efficiency, while hybrid systems mitigate production fluctuations, improving overall performance. Increased efficiency reduces reliance on fossil fuels and cuts greenhouse gas emissions, offering significant environmental benefits. Policies and financial incentives promoting efficient systems can lower operational costs, making renewables more accessible despite high initial investments. Advancing research and policy frameworks focused on efficiency is essential for achieving global sustainable development goals in clean energy.

### **1.3. Overview of Intelligent Control Algorithms**

Smart control algorithms are essential for optimizing renewable energy systems, enhancing efficiency and reliability. These advanced algorithms utilize artificial intelligence (AI) and machine learning (ML) to analyze data from various sources, such as weather forecasts and energy consumption trends, enabling informed decisions that improve energy production and usage.

Intelligent control strategies significantly enhance demand response by adjusting energy supply in real-time based on actual usage patterns. For instance, smart thermostats and energy management systems can optimize household energy consumption without sacrificing comfort. Leveraging the Internet of Things (IoT), these systems allow precise control over individual appliances, leading to increased energy savings and flexibility.

Advanced machine learning techniques, including deep learning, improve predictions of renewable energy generation. They model complex relationships within large datasets, resulting in better forecasting accuracy for solar and wind power outputs. Innovative approaches like convolutional neural networks (CNNs) and recurrent neural networks (RNNs) effectively address challenges in renewable energy prediction.

Moreover, intelligent control algorithms enhance grid management by improving the stability and reliability of power supply amidst fluctuations common in renewable sources. They aid in integrating distributed generation resources into grids, ensuring that variability does not negatively impact performance. Research indicates that as these systems gather more data, the effectiveness of intelligent control models increases, crucial for scenarios requiring quick responses to maintain stable operations.

## II. CHALLENGES IN RENEWABLE ENERGY SYSTEMS

### 2.1. Fluctuations in Energy Production Due to Weather

Variations in energy output from renewable sources like solar and wind are primarily influenced by changing weather patterns. Solar energy production depends on sunlight availability, which can be affected by cloud cover and seasonal changes. On overcast days or during prolonged rainy periods, solar panel efficiency significantly decreases. Similarly, wind energy production relies on wind speed and direction; fluctuations can lead to inconsistent energy generation, as turbines require specific wind speeds for optimal output.

This unpredictability presents challenges for grid operators who must balance supply and demand. Unlike traditional power plants that can quickly adjust their output, renewable sources lack such flexibility due to their dependence on natural conditions. To address these uncertainties, advanced management strategies are essential for maintaining grid stability. The use of artificial intelligence (AI) in monitoring systems and predictive analytics has emerged as an effective approach to manage these fluctuations.

AI can enhance forecasting for solar and wind energy by analyzing real-time data alongside historical trends. Machine learning algorithms process extensive meteorological data, allowing operators to better anticipate variations in energy generation. This leads to improved coordination with supplementary systems like battery storage or fossil fuel plants. Furthermore, hybrid renewable setups combining solar panels and wind turbines help mitigate the intermittency of individual resources, enhancing overall energy production stability and reliability across the grid.

Reference	Year	Analysis objective	Target of the system	Outcomes
Abdin et al. [sub-ref-146]	2019	Techno-economic analysis	Off-grid power supply and hydrogen production	Conducted techno-economic analysis of hybrid energy systems for off-grid power supply and hydrogen production.
Jaszczur et al. [sub-ref-147]	2019	Optimization	Hybrid renewable energy systems	Explored optimization techniques for hybrid renewable energy systems.
Priyadarshi et al. [sub-ref-148]	2019	MPPT optimization	Standalone hybrid PV-wind power system	Developed an ant colony optimized MPPT for a standalone hybrid PV-wind power system.
Al-Quraan & Al-Qaisi [sub-ref-149]	2021	Modeling, design, and control	Standalone hybrid PV-wind micro-grid system	Modeled, designed, and controlled a standalone hybrid PV-wind micro-grid system.

Reference	Year	Analysis objective	Target of the system	Outcomes
Barakat et al. [sub-ref-150]	2020	Multi-objective optimization	Grid-connected PV-wind hybrid system	Performed multi-objective optimization considering reliability, cost, and environmental aspects for a grid-connected PV-wind hybrid system.
Kumar & Shivashankar [sub-ref-151]	2022	MPPT optimization	Hybrid wind solar energy system	Optimized power point tracking of solar and wind energy in a hybrid wind solar energy system.
Akram et al. [sub-ref-152]	2020	Techno-economic analysis	Stand-alone renewable energy system for remote areas	Conducted a techno-economic optimization analysis for a stand-alone renewable energy system in remote areas.
Gbadamosi & Nwulu [sub-ref-153]	2020	Power dispatch and reliability analysis	Hybrid PV-wind systems	Analyzed optimal power dispatch and reliability of hybrid PV-wind systems in farming applications.
Das et al. [sub-ref-154]	2021	Techno-economic optimization	Stand-alone hybrid renewable energy systems	Techno-economic optimization of HRES to meet electric and heating demand.
Hemeida et al. [sub-ref-155]	2020	Optimum design	Hybrid wind-PV energy system for remote area	Optimally designed a hybrid wind/PV energy system for remote areas.
Charrouf et al. [sub-ref-156]	2020	Artificial Neural Network power manager	Hybrid PV-wind desalination system	Implemented an Artificial Neural Network power manager for a hybrid PV-wind desalination system.
Zhang et al. [sub-ref-157]	2020	Optimal sizing	Grid-connected hybrid system integrating hydropower, PV, and wind	Optimally sized grid-connected hybrid system with cascade reservoir connection and PV -wind complementarity.
Zhou et al. [sub-ref-158]	2021	Modeling and configuration optimization	Natural gas-wind-PV-hydrogen integrated energy system	Developed a novel deviation satisfaction strategy for the configuration optimization of the integrated energy system.
Naderipour et al. [sub-ref-159]	2022	Hybrid energy system optimization	Remote area application	Optimized hybrid energy system with BT storage considering loss of energy probability and economic analysis.
Ishaq et al. [sub-ref-160]	2021	Solar and wind driven energy system	Hydrogen and urea production with CO <sub>2</sub> capturing	Developed a solar and wind driven energy system for hydrogen and urea production with CO <sub>2</sub> capturing.

Table 1: Recent literature investigated PV + WT scenario as several aspects.

### 2.2. Current Limitations in Existing Control Systems

Current renewable energy control frameworks face challenges due to the unpredictable nature of wind and solar power, leading to variable energy output that static algorithms struggle to manage. These systems lack advanced predictive maintenance and real-time optimization capabilities, often missing early failure indicators and causing downtime and higher costs. Integration issues within the grid, such as voltage fluctuations and frequency instability, further complicate matters, especially as renewables become more prevalent. Heavy reliance on manual intervention delays responses to load shifts or irregularities. While AI offers potential, its integration into renewable systems is still developing, hindered by a lack of standardized protocols. Intelligent control methods leveraging real-time data, adaptability, and proactive maintenance are urgently needed to improve system performance.

Machine learning technique	Application	Dataset	Performance metrics	Main results	Reference (s)
Random forest (RF) regression	Wind power forecasting based on daily wind speed data	Hourly wind speed observation values for 5 years from Nigde, Turkey, and four other datasets generated for different regions of Turkey (Cesme, Mamak, Bozcaada, and Silivri). The dataset contains 43,800 observations in total.	R <sup>2</sup> values Mean absolute error (MAE) Root mean squared error (RMSE)	RF algorithm showed the best performance with an R <sup>2</sup> value of 0.995 and MAE of 7.048.	(Demolli et al., sub-ref-2019)
Artificial neural networks (ANN)	Wind production prediction energy	Data from open power system data (2020) Two data sources aggregated, containing weather and energy output information of wind turbines	Coefficient of determination (R <sup>2</sup> ) Mean absolute error (MAE) Root mean squared error (RMSE)	ANN had the best performance with the highest R <sup>2</sup> , lowest MAE, and lowest RMSE, but had a longer training time and required more computational power.	(Buturache & Stancu, sub-ref-2021)
Neural network regression (using TensorFlow and keras libraries)	Prediction of power generated by airborne wind energy systems (AWE)	Aggregated data from seven tests consisting of numerical and categorical data from multiple sensors.	Mean squared error (MSE).	<ul style="list-style-type: none"> <li>Neural network model was successful in predicting tether force for AWE systems without hyper-parameter tuning.</li> <li>Neural network model had a longer training</li> </ul>	(Rushdi et al., sub-ref-2020)

Machine learning technique	Application	Dataset	Performance metrics	Main results	Reference (s)
				time than other algorithms but had better overall accuracy performance.	
Wavelet decomposition method, long short-term memory (LSTM) neural network, and multilayer perceptron (MLP)	Identifying suitable locations for offshore wind Turbine Generators (OWTG) installations in the mediterranean basin and predicting short-term wind speed	Modern-era retrospective analysis for applications (MERRA-2) dataset	Mean absolute percentage error (MAPE), Root mean square errors (RMSE), and Mean absolute error (MAE)	Identified several mediterranean basin zones with attractive offshore wind potential, such as the Aegean Sea, Gulf of Lyon, Northern Morocco, and Tunisia regions. The combined forecasting model (WTD-LSTM) demonstrated a higher level of accuracy in predicting short-term wind speed compared to single models (MLP and LSTM).	(Majidi Nezhad et al., sub-ref-2022)

Table 2: The various applications of machine learning to wind energy. (source: reference [4])

### III. DEEP LEARNING TECHNIQUES FOR CONTROL ALGORITHMS

#### 3.1. Overview of Deep Learning Concepts

Deep learning, a significant subset of machine learning, is known for its ability to identify complex patterns in large datasets. Its architecture typically comprises multiple layers of neural networks that process and extract features from raw data, allowing these networks to learn autonomously without manual feature engineering, a limitation of traditional methods. Key components of deep learning include deep neural networks (DNNs), convolutional neural networks (CNNs), and recurrent neural networks (RNNs). DNNs consist of input, hidden, and output layers facilitating intricate computations through interconnected neurons. CNNs excel in spatial tasks like image recognition by using convolutional filters, while RNNs, including Long Short-Term Memory (LSTM) and Gated Recurrent Units (GRUs), are effective for sequential data and time-series forecasting.

Deep learning's success spans various fields due to its unsupervised feature learning, strong generalization, and adaptability to large datasets. In renewable energy, deep learning techniques improve forecasting and optimization,

enhancing predictions for solar and wind energy production by revealing complex historical patterns and addressing uncertainties. Additionally, these models support real-time decision-making in smart grids, optimizing energy management systems based on fluctuating demand and supply. With ongoing research, hybrid models integrating deep learning with traditional algorithms are emerging as viable solutions to address challenges in renewable energy.

### 3.2. Applications in Renewable Energy Control

Deep learning is transforming renewable energy management by enhancing efficiency and reliability. Models like DNNs, LSTMs, and GRUs improve forecasting accuracy for electricity demand and renewable generation, addressing variability caused by environmental factors. AI-driven smart control systems optimize hybrid energy setups, adjusting solar and wind outputs based on real-time weather data, reducing costs, and boosting grid stability. AI also aids in fault detection for solar systems, cutting maintenance costs, and optimizing energy storage to stabilize power supply from intermittent sources. In demand-side management, deep learning predicts consumption trends, enabling dynamic resource distribution and maximizing renewable use. These advancements position deep learning as a key innovation driver in renewable energy, supporting sustainable energy goals.

## IV. PROPOSED INTELLIGENT CONTROL MODEL

### 4.1. Description of the Hybrid Solar-Wind System

A hybrid solar-wind system combines PV panels and wind turbines to enhance energy generation efficiency and address the variability of individual sources. Solar output peaks on sunny days, while wind energy thrives in cloudy or stormy conditions, ensuring a more stable power supply. These systems are ideal for regions with seasonal weather changes and can integrate energy storage solutions like batteries to store excess energy for use during low generation periods. Advanced control algorithms optimize energy flow based on real-time data, improving reliability. Hybrid systems also enhance grid stability by providing backup power during high demand or outages, especially in remote areas. Ongoing advancements in AI and machine learning further optimize performance by predicting energy fluctuations and maintenance needs.

### 4.2. Architecture of the Deep Learning Algorithm

The deep learning framework for hybrid solar-wind systems uses a multi-layer neural network to optimize renewable energy management. It integrates inputs like meteorological data and energy usage trends, analyzing complex nonlinear relationships. Convolutional layers extract features from time-series data, while LSTM units model temporal dependencies in energy production and demand. The output layer generates control signals for energy extraction, adapting to current conditions and forecasts. Reinforcement learning refines strategies over time, and real-time data acquisition ensures operational efficiency under varying conditions. Advanced optimization techniques like genetic algorithms enhance predictive accuracy and training convergence, improving system reliability and efficiency.

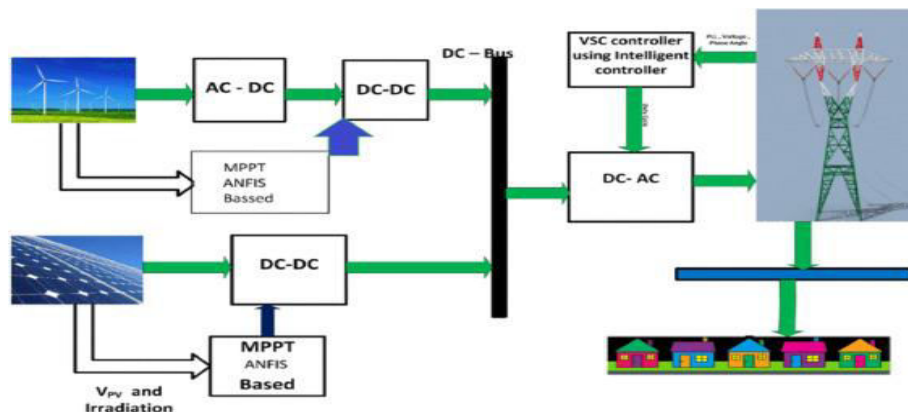


Figure 1: Diagram of a hybrid renewable energy system.

V. IMPLEMENTATION STRATEGY

5.1. Data Collection and Preprocessing Methods

Data gathering and preprocessing are essential for developing intelligent control models in renewable energy systems, particularly with deep learning. The initial phase involves collecting extensive data over several years from various sources, including historical production metrics, weather forecasts, and real-time statistics, ensuring representation of seasonal variations. Having the last five years of data is crucial for effective model training.

During preprocessing, it's vital to cleanse the data by removing inconsistencies and outliers that could skew results. Normalization techniques align datasets on a common scale while maintaining meaningful distinctions, enhancing training efficiency. Feature extraction follows, identifying characteristics correlated with energy output, such as temperature, humidity, wind speed, and cloud cover.

Time-series analysis organizes the dataset for deep learning by segmenting it into chronological sequences, enabling the models to learn patterns over time. A validation subset from the most recent year helps assess model performance during training and mitigates overfitting.

Once the training, validation, and testing datasets are prepared, advanced algorithms can be applied. Precise tuning of hyperparameters based on preprocessing outcomes is necessary to ensure optimal performance in real-time applications. In essence, careful attention to data collection and preprocessing lays a strong foundation for effective intelligent control systems to manage renewable energy resources efficiently.

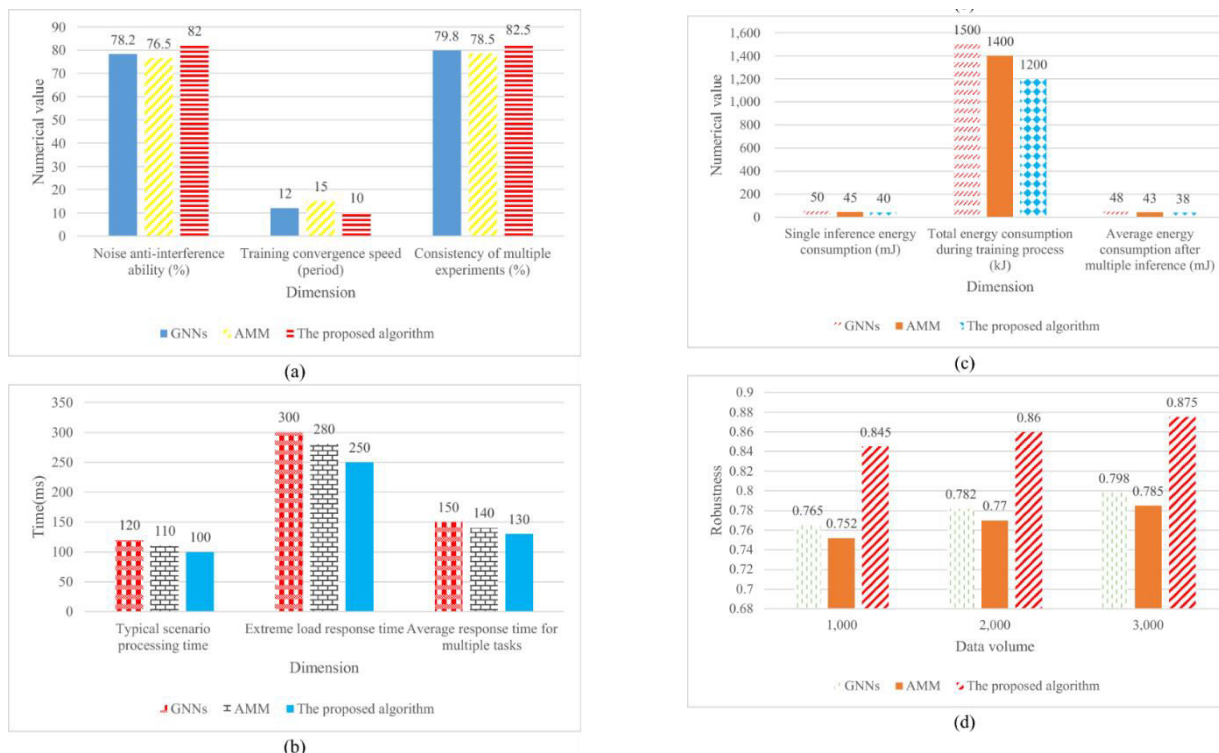


Figure 2: Analysis of simulation experiment results a Stability; b : Response time; c Energy consumption; d Robustness (source: reference [10])



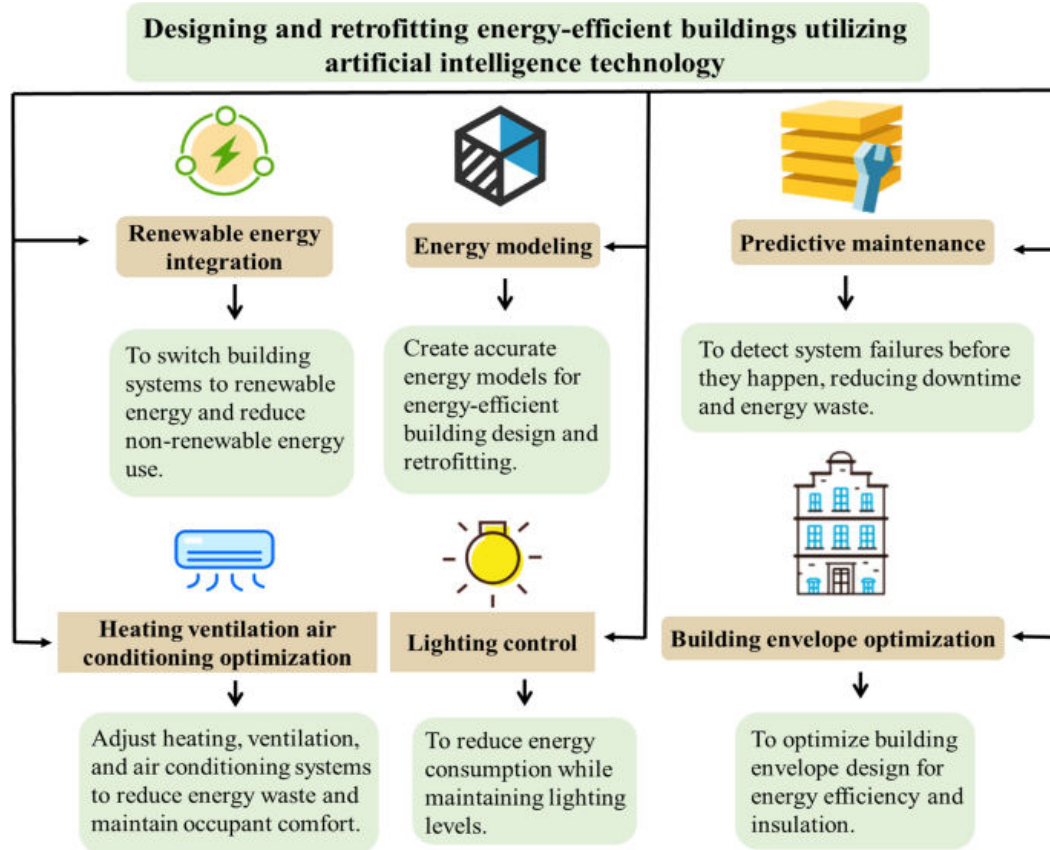


Figure 3: Designing and retrofitting energy-efficient buildings utilizing artificial intelligence technology.

### 5.2. Training and Testing Phases of the Model

The training segment of the proposed deep learning framework for managing hybrid solar-wind setups begins with gathering an extensive dataset containing historical energy generation, climate conditions, and consumption trends. This multi-year dataset captures diverse scenarios and undergoes meticulous cleansing and normalization during preprocessing to ensure optimal learning performance. Key features relevant to energy forecasting, such as solar irradiance, wind speeds, and temperature fluctuations, are extracted for model training.

After preparation, the data is split into training, validation, and testing sets. The training set instructs the model to identify patterns that predict energy output, while various deep learning architectures are evaluated for predictive accuracy. The validation set is crucial for adjusting hyperparameters and preventing overfitting, ensuring the model can generalize to new data; techniques like dropout layers or regularization may be applied here.

Once satisfactory performance metrics are achieved on the validation set, testing occurs with an independent dataset not used in earlier phases. This assessment evaluates the model's real-world performance by comparing predictions to actual energy production figures. Different evaluation metrics—such as Mean Absolute Error (MAE) and Root Mean Square Error (RMSE)—are examined to ensure robustness and reliability in implementing intelligent control algorithms within renewable energy frameworks, ultimately enhancing energy efficiency across hybrid systems.

Machine learning technique	Application	Dataset	Performance metrics	Reference(s)
<ul style="list-style-type: none"> <li>Hybrid multistep CNN-stacked LSTM</li> </ul>	Forecasting solar energy variables (Irradiance and POA)	<ul style="list-style-type: none"> <li>Solar irradiance data from Sweihan PV independent power project</li> <li>POA data from Sweihan PV independent power project, UAE</li> </ul>	<ul style="list-style-type: none"> <li>Mean absolute error (MAE)</li> <li>Coefficient of determination (<math>R^2</math>)</li> <li>Mean squared error (MSE)</li> <li>Root mean square error (RMSE)</li> <li>Mean absolute percentage error (MAPE)</li> <li>Normalized root mean squared error (NRMSE)</li> </ul>	(Elizabeth Michael et al., sub-ref-2022)
<ul style="list-style-type: none"> <li>Least-square support vector machine (LS-SVM)</li> </ul>	Short-term solar power prediction (SPP)	<ul style="list-style-type: none"> <li>National solar radiation database (NSRDB)</li> <li>Data from Denver, Seattle, and Miami</li> </ul>	<ul style="list-style-type: none"> <li>Mean absolute error (MAE)</li> <li>Mean absolute percentage error (MAPE)</li> </ul>	(Zeng & Qiao, sub-ref-2013)
<ul style="list-style-type: none"> <li>Artificial neural networks (ANN) and gradient boosting regression trees (GBRT)</li> </ul>	Forecasting solar energy production in four cities using machine learning.	Preliminary information from four distinct locations around the country. Data divided into three seasons: summer, winter, and rainy.	<ul style="list-style-type: none"> <li>Root mean square error (RSME)</li> <li>Normalized root mean square error (nRSME)</li> </ul>	(Sivakumar et al., sub-ref-2022)
CNN-LSTM-transformer model	Solar energy production forecasting to facilitate integration of solar energy into grids	Fingrid open dataset	Root mean square error (RMSE), mean absolute error (MAE)	(Al-Ali et al., sub-ref-2023)
<ul style="list-style-type: none"> <li>Deep neural network (DNN) utilizing cloud</li> </ul>	Intra-day solar irradiance forecasting to improve the controllability of	Real-world measurements and simulations.	<ul style="list-style-type: none"> <li>Root Mean Square Error (RMSE)</li> <li>Mean</li> </ul>	(Dhanalakshmi et al., sub-ref-2022)

Machine learning technique	Application	Dataset	Performance metrics	Reference(s)
motion analysis and machine learning.	power plants.		<ul style="list-style-type: none"> <li>Absolute Error</li> <li>Precision</li> <li>Recall</li> <li>F-measure.</li> </ul>	
Support vector regression (SVR)	Estimation of technical potential of rooftop solar PV electricity production in urban areas of Switzerland	of Urban areas in 1901 communes in Switzerland	<ul style="list-style-type: none"> <li>RMSE (Root mean square error)</li> <li>RRMSE (Relative root mean square error)</li> </ul>	(Assouline et al., sub-ref-2017)

Table 3: The various application of machine learning to solar energy.

## VI. PERFORMANCE EVALUATION METRICS

### 6.1. Criteria for Success Measurement

A comprehensive evaluation framework for intelligent control algorithms in renewable energy systems must adopt a multifaceted perspective to thoroughly assess their performance. Essential metrics should include energy efficiency, forecasting accuracy, operational reliability, and economic feasibility. Energy efficiency is measured by comparing the energy consumption of proposed deep learning models with that of traditional systems, particularly using indicators such as millijoules expended per inference. For example, a reduction in energy usage during both the training and operational phases indicates improved efficiency, which can lead to lower operational costs over time.

The accuracy of forecasts is crucial as it directly affects the effectiveness of energy management strategies. Indicators like mean absolute error (MAE) and root mean squared error (RMSE) should be utilized to assess the difference between predicted and actual energy outputs from solar and wind systems. These performance benchmarks demonstrate how well models can adapt to real-time changes in weather conditions that impact renewable energy production.

Operational reliability is another important aspect, involving the evaluation of system stability under various environmental conditions. This can be examined through long-term performance metrics that monitor system behavior across different loads and weather patterns.

Moreover, economic feasibility takes into account not only initial investment costs but also potential savings achieved through increased efficiency and reduced maintenance needs. A comparative analysis of the total lifecycle costs associated with implementing intelligent control algorithms versus traditional methods provides valuable insights into financial sustainability.

By incorporating these measurement criteria into the evaluation process, a robust framework is established for assessing intelligent control algorithms within renewable energy systems, facilitating their effective adoption while addressing existing challenges in this evolving sector.

### 6.2. Comparison with Traditional Systems

The integration of intelligent control algorithms in renewable energy systems offers significant advantages over traditional methods. Conventional energy systems rely on centralized control, which struggles to adapt to the variability of renewable sources like wind and solar. These systems often use fixed algorithms that cannot respond quickly to

changes in energy supply or demand.

In contrast, intelligent control algorithms leverage advanced data-driven techniques, such as deep learning and machine learning. They can process large volumes of real-time data, enabling dynamic adjustments in energy generation and distribution. This capability allows for better anticipation of energy output changes due to weather variations, resulting in improved grid stability. Traditional systems often face challenges like voltage instability, leading to inefficiencies. Furthermore, artificial intelligence enhances operational effectiveness by optimizing resource allocation in decentralized networks. Conventional operators may lack real-time insights, hindering optimal resource dispatch. Intelligent control systems continuously learn from historical data, reducing energy losses and improving reliability. Additionally, while traditional infrastructures can incur high costs for upgrades, intelligent control models can be integrated into existing systems with minimal disruption. This adaptability supports a gradual transition to more sustainable practices without extensive retrofitting.

Overall, intelligent control algorithms significantly improve responsiveness and resource management in integrating renewable energy sources into power grids, promoting a more efficient approach to energy production.

## **VII. RESULTS AND DISCUSSION**

### **7.1. Performance Outcomes from Hybrid System Implementation**

Hybrid solar-wind systems enhance energy stability by leveraging the complementary nature of solar and wind resources, ensuring consistent supply. These systems can meet up to 15% of local energy demands without interruptions, supported by advanced machine learning for predictive maintenance and optimization. Incorporating energy storage minimizes waste by storing excess energy for use during low generation periods, boosting efficiency and grid stability. Intelligent control algorithms enable real-time adjustments based on environmental conditions, reducing operational costs and fossil fuel reliance. Empirical data shows hybrid systems achieve lower levelized energy costs, often under \$0.50 per kWh, making them a promising solution for sustainable development.

### **7.2. Implications for Future Renewable Energy Integration**

The integration of smart control algorithms in renewable energy systems has significant potential to transform energy frameworks. Utilizing advanced models, particularly those driven by artificial intelligence, can enhance the stability and efficiency of solar and wind energy generation. These models allow for real-time adjustments to energy output fluctuations, improving grid reliability. As demand for clean energy increases, hybrid renewable energy systems (HRES) provide a flexible approach that responds dynamically to load variations while optimizing resource use.

Combining various renewable technologies strengthens power infrastructure, and advancements in storage solutions like flow batteries will ensure a consistent supply from intermittent sources. Emphasizing life cycle analysis and modular designs keeps these systems economically viable and environmentally responsible. The rise of decentralized community-driven projects empowers local stakeholders, promoting equitable access to renewable resources.

AI's influence extends to market transformation, introducing innovative service models for providers and enhancing customer engagement. This progress could lower costs, making renewables more competitive with fossil fuels. Collaborative efforts between government and private sectors are crucial for creating policies that encourage integrated strategies rather than isolated technology investments.

As technology advances, fostering a cultural shift towards AI-powered smart grids is vital. This transition promises efficient energy management and innovative concepts like peer-to-peer trading through blockchain, revolutionizing community energy interactions and enhancing transparency. Ultimately, integrating intelligent control algorithms into renewable energy systems paves the way for a sustainable future marked by increased efficiency and community involvement.

## **VIII. CONCLUSION**

Intelligent control algorithms significantly enhance the efficiency and integration of hybrid solar-wind systems, addressing intermittency challenges through advanced deep learning. These methods improve energy management,

ensuring a more reliable power supply. Adaptive energy storage solutions, combined with AI, mitigate generation fluctuations and boost system resilience. Intelligent algorithms outperform traditional strategies by accurately predicting demand trends, aligning generation with consumption, and maximizing resource efficiency. This reduces greenhouse gas emissions and promotes sustainability. The study underscores the need for continued investment in advanced technologies for renewable energy, addressing challenges like economic viability and regulatory support. Intelligent control models are key to better integrating solar and wind resources into power grids, paving the way for future innovations.

#### REFERENCES

- [1] Q. Hassan, S. Algburi, A. Z. Sameen, Hayder M. Salman and M. Jaszczur. "A review of hybrid renewable energy systems: Solar and wind-powered solutions: Challenges, opportunities, and policy implications". Jan 2023. [Online]. Available: <https://www.sciencedirect.com/science/article/pii/S259012302300748X>
- [2] K. Nam, S. Hwangbo and C. Yoo. "A deep learning-based forecasting model for renewable energy scenarios to guide sustainable energy policy: A case study of Korea". Jan 2020. [Online]. Available: <https://www.sciencedirect.com/science/article/abs/pii/S1364032120300228>
- [3] S. Pimenow, O. Pimenowa and P. Prus. "Challenges of Artificial Intelligence Development in the Context of Energy Consumption and Impact on Climate Change". Jan 2024. [Online]. Available: <https://www.mdpi.com/1996-1073/17/23/5965>
- [4] A. D. A. B. A. Sofian, H. R. Lim, H. S. H. Munawaroh, Z. Ma, K. W. Chew and P. L. Show. "Machine learning and the renewable energy revolution: Exploring solar and wind energy solutions for a sustainable future including innovations in energy storage". Aug 2024. [Online]. Available: <https://onlinelibrary.wiley.com/doi/full/10.1002/sd.2885>
- [5] D. Gielen. "Renewables and Energy Efficiency: A Dynamic Duo". Aug 2017. [Online]. Available: <https://www.irena.org/News/articles/2017/Aug/RENEWABLESANDENERGYEFFICIENCYDYNAMIC-DUO>
- [6] T. A. Smadi, A. Handam, K. S. Gaeid, A. Al-Smadi, Y. Al-Husban and A. s. Khalid. "Artificial intelligent control of energy management PV system". Jan 2024. [Online]. Available: <https://www.sciencedirect.com/science/article/pii/S2666720723001455>
- [7] L. Chen, Z. Chen, Y. Zhang, Y. Liu, Ahmed I. Osman, M. Farghali, J. Hua, A. Al-Fatesh, I. Ihara, David W. Rooney and P. Yap. "Artificial intelligence-based solutions for climate change: a review". Oct 2023. [Online]. Available: <https://link.springer.com/article/10.1007/s10311-023-01617-y>
- [8] Z. Liu, Y. Sun, C. Xing, J. Liu, Y. He, Y. Zhou and G. Zhang. "Artificial intelligence powered large-scale renewable integrations in multi-energy systems for carbon neutrality transition: Challenges and future perspectives". Jan 2022. [Online]. Available: <https://www.sciencedirect.com/science/article/pii/S2666546822000428>
- [9] C. Ying, W. Wang, J. Yu, Q. Li, D. Yu and J. Liu. "Deep learning for renewable energy forecasting: A taxonomy, and systematic literature review". Jan 2023. [Online]. Available: <https://www.sciencedirect.com/science/article/abs/pii/S0959652622049885>
- [10] L. Lv, X. Fang, S. Zhang, X. Ma and Y. Liu. "Optimization of grid-connected voltage support technology and intelligent control strategies for new energy stations based on deep learning". Aug 2024. [Online]. Available: <https://energyinformatics.springeropen.com/articles/10.1186/s42162-024-00382-8>
- [11] K. Parvin, M. S. Hossain Lipu, M. A. Hannan, Majid A. Abdullah, K. P. Jern and R. A. Begum. "Intelligent Controllers and Optimization Algorithms for Building Energy Management Towards Achieving Sustainable Development: Challenges and Prospects". (accessed Mar 03, 2025). [Online]. Available: <https://ieeexplore.ieee.org/document/9374412/>
- [12] F. Pallonetto, M. D. Rosa and Donal P. Finn. "Impact of intelligent control algorithms on demand response flexibility and thermal comfort in a smart grid ready residential building". Jan 2021. [Online]. Available: <https://www.sciencedirect.com/science/article/pii/S2666955221000174>
- [13] T. Ahmad, H. Zhu, D. Zhang, R. Tariq, A. Bassam, F. Ullah, A. S. AlGhamdi and Sultan S. Alshamrani. "Energetics Systems and artificial intelligence: Applications of industry 4.0". Jan 2022. [Online]. Available: <https://www.sciencedirect.com/science/article/pii/S2352484721014037>
- [14] F. Ahsan, N. H. Dana, Subrata K. Sarker, L. Li, S. M. Muyeen, Md. Firoj Ali, Z. Tasneem, Md. Mehedi Hasan, S. H. Abhi, Md. Robiul Islam, Md. Hafiz Ahamed, Md. Manirul Islam, Sajal K. Das, Md. Faisal R. Badal and P. Das. "Data-driven next-generation smart grid towards sustainable energy evolution: techniques and technology review". Jun 2023. [Online]. Available: <https://pcmp.springeropen.com/articles/10.1186/s41601-023-00319-5>

- [15] Samuel-Soma M. Ajibade, F. V. Bekun, F. F. Adedoyin, B. A. Gyamfi and A. O. Adediran. "Machine Learning Applications in Renewable Energy (MLARE) Research: A Publication Trend and Bibliometric Analysis Study (2012-2021)". Apr 2023. [Online]. Available: <https://www.mdpi.com/2571-8797/5/2/26>
- [16] B. Papari. "Behnaz-Papari-CV". Aug 2021. [Online]. Available: <https://www.tamug.edu/marr/CV/Behnaz-Papari-CV.pdf>
- [17] J. Koponen, A. Kosonen, V. Ruuskanen, K. Huoman, M. Niemelä and J. Ahola. "Control and energy efficiency of PEM water electrolyzers in renewable energy systems". Dec 2017. [Online]. Available: <https://www.sciencedirect.com/science/article/pii/S036031991733954X>



INTERNATIONAL  
STANDARD  
SERIAL  
NUMBER  
INDIA



# INTERNATIONAL JOURNAL OF INNOVATIVE RESEARCH

IN SCIENCE | ENGINEERING | TECHNOLOGY

 9940 572 462  6381 907 438  [ijirset@gmail.com](mailto:ijirset@gmail.com)



[www.ijirset.com](http://www.ijirset.com)

Scan to save the contact details