



# International Journal of Innovative Research in Science Engineering and Technology (IJIRSET)

*(A Monthly, Peer Reviewed, Refereed, Scholarly Indexed, Open Access Journal)*



**Impact Factor: 8.699**

**Volume 14, Issue 2, February 2025**

# Four Quadrant Operation of Dc Motor using PID Controller

Mrs. Tarakeshwari V<sup>1</sup>, Darshan A C<sup>2</sup>, Darshan G K<sup>3</sup>, Pavan H S<sup>4</sup>, Sharathkumar G M<sup>5</sup>

Assistant Professor, Department of Electrical and Electronics Engineering, SJBIT, Bangalore, Karnataka, India<sup>1</sup>

U.G. Student, Department of Electrical and Electronics Engineering, SJBIT, Bangalore, Karnataka, India<sup>2,3,4,5</sup>

**ABSTRACT:** This project aims to control the speed and direction of a DC motor in four quadrants: clockwise, counterclockwise, forward braking, and reverse braking. An H-bridge motor drive IC is used to switch the motor's polarity based on user inputs via four control switches. A slide switch enables alternative directional control. A 555 timer generates PWM pulses for speed regulation, while relays manage polarity changes and braking. In regenerative braking, the motor generates reverse torque for instant stopping. The four-quadrant control is achieved by varying the duty cycle of the PWM signal and switching polarity using the H-bridge IC.

The paper provides an overview of DC motor operation, explaining key components and working principles. It discusses the importance of four-quadrant operation, including motoring (forward/reverse) and braking (regenerative/plugging). Various control strategies such as armature voltage control and field flux control are examined for their efficiency. Applications in electric vehicles, robotics, and industrial automation are explored, demonstrating the versatile use of DC motors in modern engineering.

**KEYWORDS:** DC Motor, Four-Quadrant Operation, H-Bridge, PWM, Regenerative Braking, Armature Voltage Control, Field Flux Control, Industrial Automation, Electric Vehicles, Robotics.

## I. INTRODUCTION

This project aims to develop a four-quadrant speed control system for a DC motor, enabling clockwise, counterclockwise, forward braking, and reverse braking operations. This functionality is crucial for industrial applications where precise motor control is required. Instantaneous braking is achieved by applying reverse voltage for a short duration.

A 555 timer generates PWM pulses for speed control, while a motor driver IC manages polarity switching based on inputs from push buttons. The system enables directional control and braking without a microcontroller. Regenerative braking can be implemented in future enhancements to improve energy efficiency.

DC motors operate in four quadrants: forward motoring (1st quadrant), forward braking (2nd quadrant), reverse motoring (3rd quadrant), and reverse braking (4th quadrant). In motoring modes, the supplied voltage exceeds the back EMF, while in braking modes, the back EMF surpasses the supplied voltage, reversing the current flow.

This system can be enhanced using high-power electronic devices to handle large-capacity motors. DC motors' versatility makes them ideal for electric vehicles, robotics, and automation. The project demonstrates efficient motor control using pulse-width modulation (PWM), making it valuable for industrial applications.

Paper is organized as follows. Section II describes automatic text detection using morphological operations, connected component analysis and set of selection or rejection criteria. The flow diagram represents the step of the algorithm. After detection of text, how text region is filled using an Inpainting technique that is given in Section III. Section IV presents experimental results showing results of images tested. Finally, Section V presents conclusion.

## II. BLOCK DIAGRAM

The four-quadrant DC motor control system is designed to enable the motor to operate in four modes: forward motoring, forward braking, reverse motoring, and reverse braking. The system utilizes a PID controller to regulate the speed and stability of the motor while ensuring smooth transitions between the quadrants.

The microcontroller serves as the core processing unit, receiving inputs from the switch array and generating control signals. It communicates with the PID controller, which fine-tunes the motor's speed by adjusting the pulse-width modulation (PWM) signal. The microcontroller also provides real-time feedback to the display unit, allowing users to monitor operational parameters.

A switch array is used for manual control, enabling the user to select the direction of rotation and apply braking when necessary. The PID controller ensures that speed variations are minimized, improving the efficiency and accuracy of the motor's response. Power for the system is supplied by a battery, which is regulated by a voltage regulator to ensure a stable supply to the motor and other components.

The DC motor is the main actuator, receiving signals from the switch array and operating in the selected quadrant. The voltage applied to the motor is controlled based on the feedback received from the system. The voltage regulator maintains the required power level, ensuring that the motor operates efficiently without fluctuations.

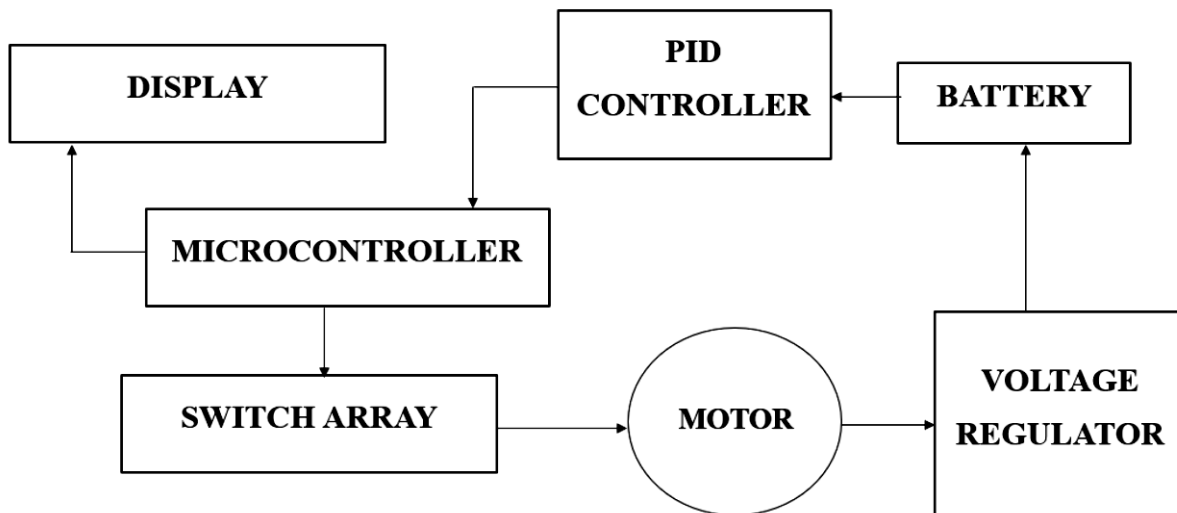


Figure 2.1 Block diagram

Overall, this four-quadrant control system is essential in industrial automation, robotics, and electric vehicle applications, where precise motor control and braking are required. The integration of a PID controller enhances system stability, reducing overshoot and ensuring accurate speed control in all four quadrants.

### III. METHODOLOGY

The working principle of four-quadrant operation in DC motors revolves around precise control of both speed and direction through sophisticated voltage and current manipulation. It integrates electromagnetism, control theory, and engineering expertise, making it essential for various industrial applications. A DC motor converts electrical energy into mechanical motion using the interaction of magnetic fields. The motor consists of a rotor, which has windings or permanent magnets, and a stator, which provides a complementary magnetic field. When current flows through the rotor windings, a magnetic field is generated, interacting with the stator's field to produce rotational motion.

Speed control in a four-quadrant system is achieved by adjusting the voltage applied to the motor terminals. This is typically done using Pulse Width Modulation (PWM), which rapidly switches the voltage on and off. By varying the duty cycle of the PWM signal, the average voltage applied to the motor changes, allowing precise speed control. Similarly, directional control is achieved by reversing the polarity of the motor terminals, altering the direction of current flow and enabling the motor to rotate in both forward and reverse directions.

The four-quadrant operation consists of the following modes:

1. Forward Motoring – The motor rotates in the forward direction with controlled speed, used in applications requiring normal propulsion.
2. Reverse Motoring – The motor rotates in the reverse direction with positive speed control, enabling backward movement when needed.
3. Forward Braking – The motor decelerates while moving forward by applying negative speed control, gradually slowing it down to a stop.
4. Reverse Braking – The motor decelerates while rotating in reverse, slowing down and eventually stopping the backward motion.

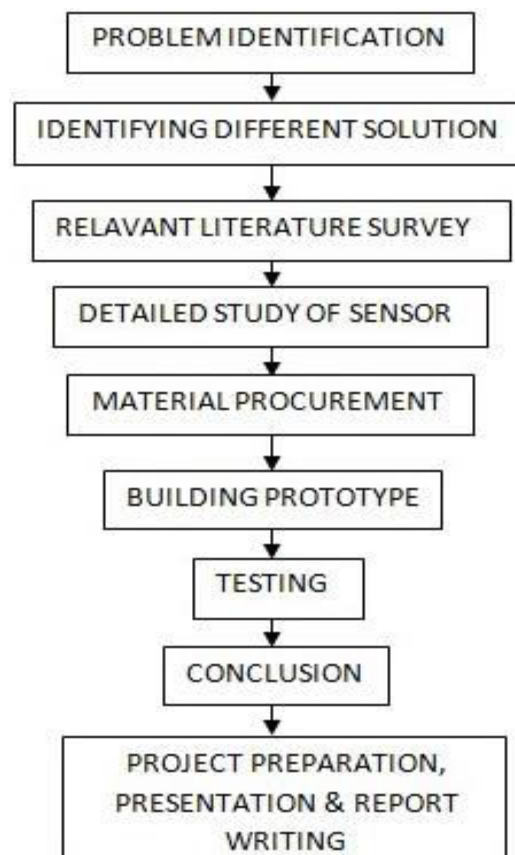


Figure 3.1 Flowchart

This capability makes four-quadrant DC motors highly versatile and precise in applications such as robotic arms, industrial conveyors, and electric vehicles. The integration of PID control further enhances motor performance by ensuring optimal speed and direction regulation under varying load conditions, improving efficiency and stability.

#### IV. EXPERIMENTAL RESULTS

The implementation of the four-quadrant operation of a DC motor using a PID controller has successfully demonstrated the ability to control motor speed and direction in all four quadrants of operation: forward motoring, forward braking, reverse motoring, and reverse braking. The hardware setup includes a DC motor, an H-bridge motor driver (L298N), a microcontroller, a PID controller, and a user interface with switches and an LCD display. The system effectively maintains motor speed under varying loads and smoothly transitions between quadrants.

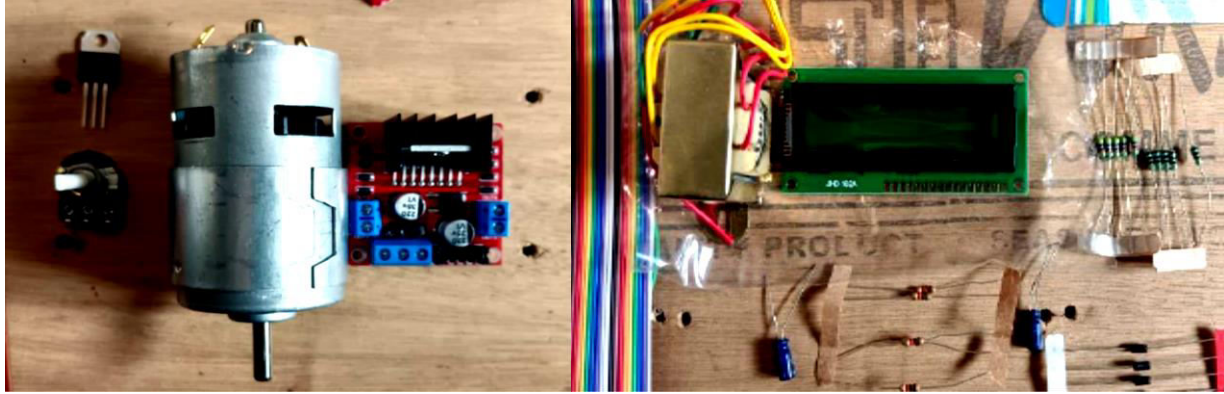


Figure 4.1 Components required

The PID controller plays a crucial role in regulating motor speed by dynamically adjusting the control signal based on proportional, integral, and derivative gains. By continuously monitoring feedback from the motor, the controller minimizes steady-state error, improves transient response, and enhances system stability. The experimental results indicate that the PID control system significantly reduces overshoot and ensures precise speed control compared to conventional open-loop or proportional-only control methods.

The user interface, consisting of toggle switches and an LCD display, enables seamless operation of the motor in all four quadrants. The switches allow the user to control the direction and braking functionality, while the LCD provides real-time feedback on speed, direction, and system status. The inclusion of a battery backup ensures continuous operation, making the system suitable for industrial and automation applications where reliable motor control is essential.

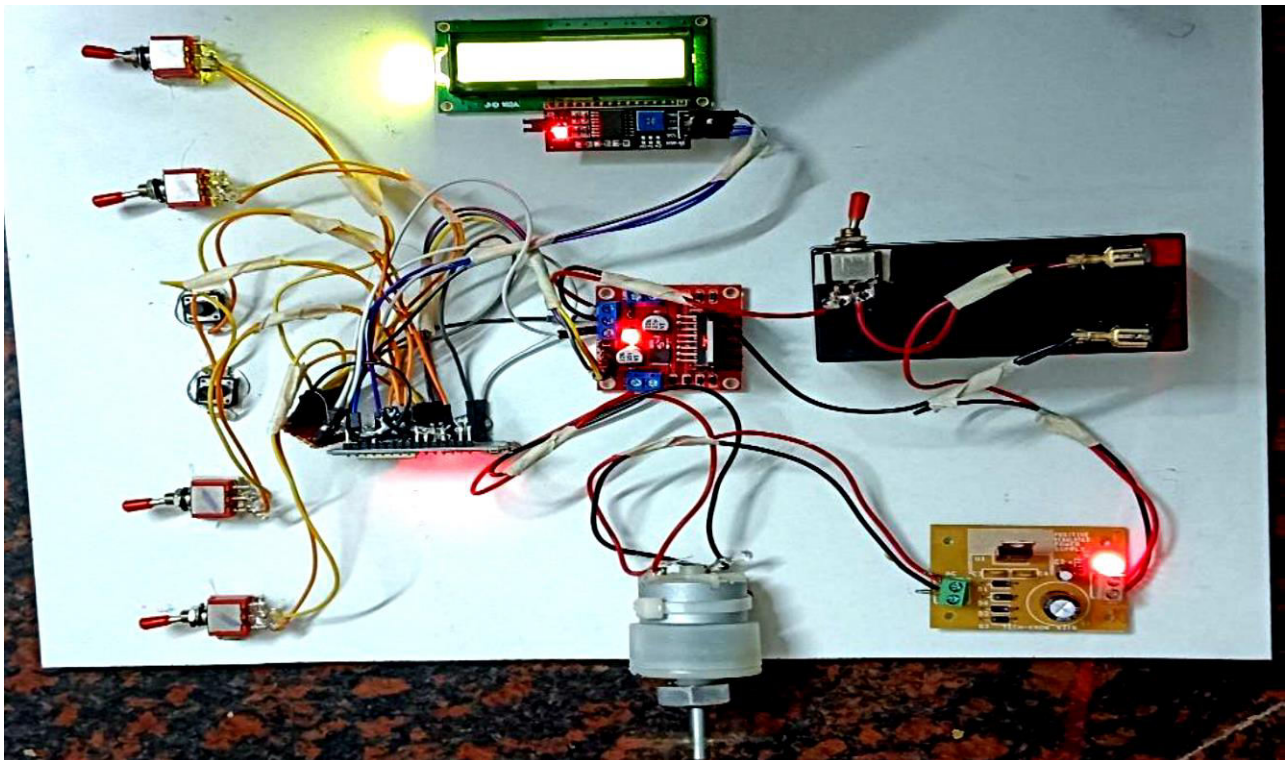


Figure 4.2 Final outcome of our project

In Quadrant 1 (Forward Motoring), the motor operates with positive speed and positive torque as the PID controller supplies the necessary voltage to drive the motor forward. The system maintains stable speed regulation even when external loads fluctuate, ensuring efficient and reliable operation in this quadrant.

During Quadrant 2 (Forward Braking), when the desired speed is zero or deceleration is required, the PID controller applies negative torque to break the motor. This controlled braking effectively reduces the speed to zero while minimizing overshoot and oscillations, preventing abrupt stops that could damage the motor or connected systems.

In Quadrant 3 (Reverse Motoring), the motor runs in reverse, exhibiting negative speed and torque. The PID controller reverses the voltage polarity to generate the required torque for reverse motion. The system responds quickly and smoothly to directional changes, ensuring optimal performance even under varying load conditions.

Finally, in Quadrant 4 (Reverse Braking), the controller applies positive torque to decelerate the motor while it is running in reverse. This controlled braking prevents the motor from accelerating uncontrollably in the reverse direction, ensuring smooth deceleration and stability.

Overall, the project successfully achieves efficient motor control with smooth transitions between operating modes. The integration of the PID controller enhances the system's performance, making it more robust and adaptable to varying load conditions. This implementation can be further expanded by incorporating wireless control, advanced tuning algorithms, or AI-based optimization techniques for improved efficiency in industrial and robotics applications.

## V. CONCLUSION

In conclusion, the exploration of four-quadrant operation in DC motors highlights its precision, efficiency, and versatility in motor control. Through experimentation and analysis, we have demonstrated smooth transitions between forward and reverse motion while optimizing energy usage and system resilience. This innovative control approach finds applications in industries such as automation, renewable energy, and transportation. The ability to operate in all four quadrants ensures adaptability to various operational scenarios, making it highly valuable for industrial applications. Future advancements can incorporate high-power electronic devices for controlling larger motors and implementing regenerative braking to improve energy efficiency. This system allows DC motors to run in both clockwise and counterclockwise directions as needed. Additionally, braking mechanisms in both forward and reverse motion ensure controlled stopping when required. The project provides a strong foundation for optimizing motor performance in real-world applications. Further enhancements can integrate intelligent control systems for enhanced automation and efficiency.

## REFERENCES

1. Abdelhamid, T.H., "Performance of single-phase DC drive system controlled by uniform PWM full-bridge DC-DC converter", Proceedings of the 10th Mediterranean Electrotechnical Conference, May 29-31, IEEE Xplore Press, pp: 974-977. DOI: 10.1109/MELCON.2000.879695
2. Al-Mashakeh, A.S.O., "Proportional integral and derivative control of brushless DC motor"; Eur. J. Sci. Res., 35: 198-203.
3. Hamed, S.A., "Performance evaluation of three-phase variable-speed DC drive systems with uniform PWM control", IEEE Trans. Power Electron., 12: 228-242. DOI: 10.1109/63.558732
4. Hang, C.C., K.J. "Astrom and W.K. Ho, 1991. Refinements of the Ziegler-Nichols tuning formula", IEE Proc. D Cont. Theory Applic., 138: 11-18
5. Hui, S.Y.R., H.S.H. Chung and S.C. Yip "A bidirectional AC-DC power converter with power factor correction", IEEE Trans. Power Electron., 15: 942-949. DOI: 10.1109/63.867684
6. Kazmierkowski, M.P. and L. Malesani, "Current control techniques for three-phase voltage-source PWM converters A survey", IEEE Trans. Ind. Electron., 45: 691-703. DOI: 10.1109/41.720325
7. Karpagavalli.P Jeyakumar, and "Simulation Dr.A.Ebenezer analysis on proportional integral and derivative control of closed Loop dc motor drive with bipolar voltage switching" in American Journal of Applied Sciences 10 (7) pp:714-723, DOI:10.3844/ajassp.2013.



INTERNATIONAL  
STANDARD  
SERIAL  
NUMBER  
INDIA



# INTERNATIONAL JOURNAL OF INNOVATIVE RESEARCH

IN SCIENCE | ENGINEERING | TECHNOLOGY

 9940 572 462  6381 907 438  [ijirset@gmail.com](mailto:ijirset@gmail.com)



[www.ijirset.com](http://www.ijirset.com)

Scan to save the contact details