



# International Journal of Innovative Research in Science Engineering and Technology (IJIRSET)

*(A Monthly, Peer Reviewed, Refereed, Scholarly Indexed, Open Access Journal)*



**Impact Factor: 8.699**

**Volume 14, Issue 2, February 2025**

# **IOT based Disaster Management System**

**Mr. Arman Yunus Jumledar<sup>1</sup>, Mr. Om Avadhut Chavan<sup>2</sup>, Mr. Mayur Ganesh Bhabal<sup>3</sup>,  
Ms. Gayatri Govind Kunkerkar<sup>4</sup>, Mr. T.C. Mhapankar<sup>5</sup>**

Student, Yashwantrao Bhonsale Institute of Technology, Sawantwadi, Maharashtra, India<sup>1,2,3,4</sup>

Faculty, Yashwantrao Bhonsale Institute of Technology, Sawantwadi, Maharashtra, India<sup>5</sup>

**ABSTRACT:** This research paper based on Disaster management requires more stringent and robust systems that are capable of detecting multiple types of natural hazards and issuing timely alarms. The paper discusses an IoT-based integrated red alert system for the detection and early warning of both floods and earthquakes. In this system, integration of multiple environmental sensors, including water level sensors, rainfall gauges, soil moisture sensors, seismometers, and accelerometers, monitors the critical parameters related to these natural disasters. Data from these sensors is transmitted through wireless sensor networks to edge devices for preliminary processing and then to a centralized cloud platform for comprehensive analysis. Machine learning algorithms are applied to historical and real-time data to predict potential flood and earthquake events accurately. It disseminates warnings through various media, including mobile applications, SMS, public address systems, and social media. This ensures speedy communication to affected populations and the authorities. In this way, the system adds to the effectiveness and efficiency of disaster response by providing a precious tool for flood and earthquake impacts mitigation and improving community resilience.

**KEYWORDS:** Internet of Things-based system(IOT), short message service(SMS)

## **I. INTRODUCTION**

The Natural disasters, which include floods and earthquakes, have been a threat to communities globally because of the sudden nature in which they manifest and the significant destruction they cause to human life and infrastructure. The timely detection and effective early warning systems will help mitigate risks and enhance efforts in disaster preparedness and response. In the recent past, the integration of Internet of Things technologies has transformed the management of disasters by providing for real-time monitoring, data collection, and rapid alerts. This paper provides an insight into the designing and implementing the IoT-based red alert system meant for flood detection and earthquake anticipation with early warnings. By tapping into sensor technological advancements, the wireless communication networks, cloud computing, and ML algorithms, the proposed system detects an environmental anomaly characteristic of impending catastrophes by strategically placing a set of water level sensors, rainfall gauges, soil moisture sensors, seismometers, and accelerometers in vulnerable zones.

Key objectives include the accurate prediction of flood occurrences based on river levels, rainfall intensity, and soil saturation, as well as the detection of seismic activities through It incorporates the use of IoT technologies in combination with sophisticated data analytics and alert systems. This therefore allows for effective building of more robust communitybased flood and earthquake resilience, while supporting disaster readiness, response, and recovery by optimizing these events. The following section outlines the design architecture, sensing strategy, methodologies in data handling, and applicability of deploying this system for a disaster region.

## **II. PROBLEM STATEMENT**

The problem at hand is the need for an advanced and integrated early warning system capable of detecting and issuing alerts for floods and earthquakes in real time. Current systems often suffer from limitations such as latency in data transmission, sparse sensor coverage in remote areas, and insufficient integration of data sources, which hinder their effectiveness in timely disaster response.

### III. OBJECTIVE OF PROJECT

The objectives of the project are designed for addressing some of the major challenges facing disaster management and enhancing the effectiveness of early warning systems for floods and earthquakes using IoT technologies:

**1. Real-Time Monitoring:**

Develop and deploy a network of IoT-enabled sensors (water level, rainfall, seismic, etc.) to continuously monitor environmental conditions prone to floods and earthquakes.

**2. Integration and Analysis of Sensor Data:**

Integrate the sensor data to a centralized cloud platform for processing and analysis in real-time through advanced algorithms and machine learning models.

**3. Early Detection and Prediction:**

Enhance the system's ability to predict early signs of potential disasters, like rising water levels or seismic activities, through the use of historical data patterns and real-time analytics.

**4. Alert Mechanism:**

Implement a robust alert system that can give timely warnings to relevant authorities, emergency responders, and the public through multiple communication channels, including mobile apps, SMS, public address systems.

**5. Scalability and Reliability:**

Design the system for scalability to accommodate further sensor expansions and increased data volumes, while it operates reliably under various geographical and environmental conditions.

**6. User Interface and Accessibility:**

Develop user-friendly interfaces for monitoring and managing the system accessible to emergency personnel and the public to enhance situational awareness and coordinate response.

**7. Testing and Validation:**

Test and validate the system to ensure that it is accurate, reliable, and responsive in a simulated disaster environment and in actual practice.

**8. Community Engagement and Training:**

Organize awareness campaigns and training programs to educate the public on disaster preparedness and response strategies through the IoT-based alert system.

### IV. SCOPE

**Scope of the IoT-Based Disaster Management System:**

**Real-Time Monitoring:** Continuously monitors parameters like water levels, temperature, humidity, and seismic activity.

**Early Warning System:** Detects potential disasters and sends alerts via GSM or internet connected devices.

**Automated Alerts:** Sends warnings through SMS, emails, or app notifications. Data

**Collection and Analysis:** Stores and analyses data to predict future disasters. scalability:

Can add sensors to monitor floods, fires, earthquakes, and more.

This costs less as it uses affordable parts such as the Arduino Uno R3 and the GSM modules. Allows viewing and control anywhere. Empowers communities with equipment for disaster preparation and response. Integrates well with government and emergency response systems. It's energy-efficient: it supports operations through solar-powered means for communities with limited access to power. It is adaptable to urban, rural, or remote environment

### V. EXISTING SYSTEM

Current disaster early warning systems include detection and mitigation technologies and methodologies related to flood and earthquake disaster mitigation. In most cases, they range from simple manual observations to more automated technologies.

**1) Flood Detection Systems:**

**a). Manual Monitoring:**

Dependent on human observers for reporting increasing water levels and rainfalls

Not limited by manpower or the latency of reports.

**b). Automated Gauge Stations:**

Water level and rainfall sensors installed to provide real-time data of river and reservoir conditions.

**c). Remote Sensing:**

Satellite images and radar to determine the risk of flood and monitor extensive areas. enable to be used for identifying flood-prone areas and real-time determination but with limited satellite passes.

**d). Hydrological Models:**

Use of meteorological data with hydrological models for predicting flood occurrences.  
Very heavy computational power requirement and highly sensitive to weather forecast errors.

**2) Earthquake Detection Systems:**

**a). Seismograph Networks**

A huge network of seismographs, which measure the ground movements  
Analysing the data to determine an earthquake and approximate its magnitude and epicentre

**b). Early Warning Systems (EWS):**

Identifies the initial seismic waves called P-waves before the more damaging S-waves and issues alerts ahead of them.  
Some examples include the Earthquake Early Warning (EEW) of Japan and the Shake Alert system in the US.

**c). Smartphone-Based Detection:**

Use accelerometers in smartphones to sense shaking and crowdsource data for earthquake detection.  
Good for supplementing traditional networks but relies on user participation and placement of phones.

**3) Limitations of Existing Systems:**

Latency: Many systems suffer from delays in data transmission and processing, leaving little time for early warnings.

- Coverage: Sparse sensor networks in remote and underdeveloped regions reduce the effectiveness of detection and warning systems.
- Integration: Poor connection between various types of sensors and sources of data may result in inadequate situational awareness.

## VI. LIMITATION

### 1. Sensor Reliability and Maintenance

- Sensor Accuracy: Accuracy of sensor data depends on environmental conditions, calibration drift, or malfunctions in the sensors, leading to false alerts or missed detection.
- Maintenance Requirements: Sensors require frequent maintenance and recalibration, which could be resource-heavy, especially if located in inaccessible or dangerous places.

### 2. Data Connectivity and Transmission

- Communication Issues: The reliability of communication networks (cellular, Wi-Fi, etc.) can be unreliable, especially in rural or disaster-affected areas, which may compromise the timely transfer of real-time data.
- Data Latency: Delayed data transmission and processing can compromise the promptness of the alerts sent, thus weakening the effectiveness of the system in giving timely warnings.

### 3. Data Privacy and Security

- Data Vulnerability: IoT systems are susceptible to cyber-attacks, unauthorized access, and data breaches, thus exposing sensitive information and disrupting system operations.
- Privacy Issues: Gathering and storing personal information such as location data raise privacy issues, thus calling for robust data protection measures and adherence to different regulations.

**4.Integration and Interoperability**

- System Integration: The integration of various sensors, data sources, and communication protocols into a streamlined system is complex and may demand interoperable standards.
- Legacy Systems: Compatibility with infrastructure and other legacy systems existing within government agencies and emergency services might be challenging in terms of integration.

**5.Scalability and Cost**

- Scalability: Scaling the system to cover larger geographic areas or increasing the number of sensors may incur higher costs and technical complexities.
- Operational Costs: Initial setup costs, ongoing maintenance, and operational expenses (e.g., cloud computing, data storage) can be prohibitive for resource-constrained regions or organizations.

**6.Public Awareness and Response**

- Alert Interpretation: Misinterpretation of alarms or lack of knowledge among the public concerning how to appropriately respond to notices can render the system useless.
- Behavioural Response: Human considerations- complacency or unwillingness to evacuate following alarms may impact the functionality of early warning systems.

**7.Regulatory and Ethical Considerations**

- Regulatory Compliance: Adherence to local regulations, standards, and disaster management as well as the protocols for dealing with data handling is a challenge, especially in cross border operations.
- Ethical Use: Ethical use of predictive analytics, data sharing, and the transparency in making decisions have to be brought about to garner acceptance and trust.

**VII. PROPOSED SYSTEM**

The proposed work shall outline the methodology and activities directed towards developing and implementing an IoT-based red alert system for the early detection and warning of floods and earthquakes. This project involves several phases and tasks toward achieving its goals effectively:

**Phase 1: Planning and Requirements:-**

- Scope and Disaster Scenarios
- Floods, Earthquakes

**Phase 2: System Design:-**

- Deployment of IoT Sensors
- Water Level, Seismometers, etc.

**Phase 3: Development:-**

- Sensor Data with the Cloud Platform
- Machine Learning Algorithms for Anomaly Detection and Prediction.

**Phase 4: Testing:-**

- Simulate and test under various disaster scenarios.
- Optimize algorithms and system parameters.

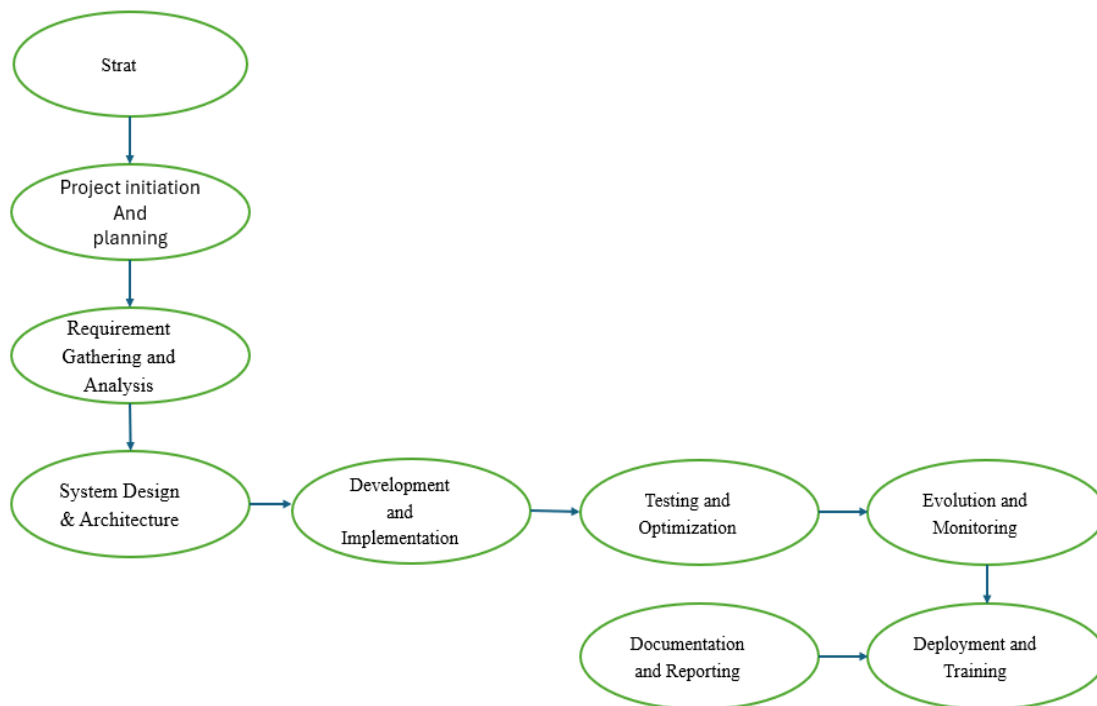
**Phase 5: Deployment:-**

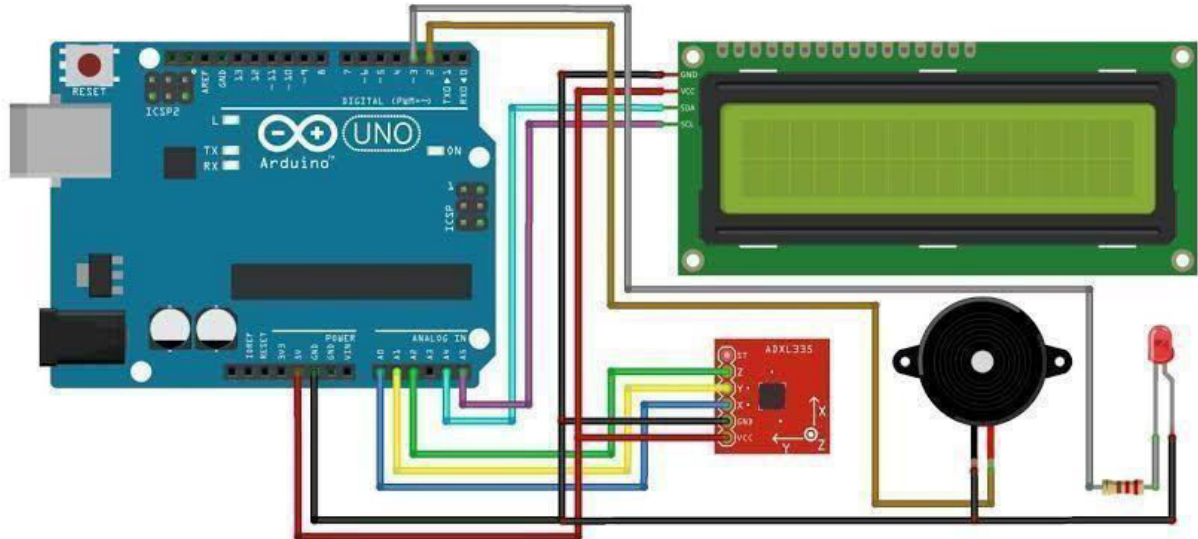
- Deploy the system in disaster-prone regions.
- Train stakeholders and communities on system use and disaster response.

**Phase 6: Monitoring:-**

- Continuously evaluate system performance and effectiveness.
- Gather user feedback for improvements.

**Flow of the Project :-**





Circuit of Earthquake Detection System



Circuit of Flood Detection System

### VIII. CONCLUSION

In this paper, the IoT-based system for red alert or flood and earthquake detection will be a fundamental step forward in the management of disaster and building resilience. Advanced sensor technologies, real-time data analysis capabilities, and efficient communication networks are leveraged to provide timely warnings and reduce the negative impacts of natural disasters on communities.

Some benefits to be identified with such systems include

- **Early Detection and Prompt Response:** Continuously monitored with real-time processing of data can lead to the early detection of flood and earthquake events to trigger prompt authorities' and the public's action.
- **Improved Accuracy and Predictability:** Utilizing algorithms with machine learning in historical data patterns makes the accuracy of predictions stronger while reducing the likelihood of false alarms and hence improving resource use.

- **Improved community resilience:** through this system, community empowerment comes forth through timely actionable information regarding the need to evacuate and react

#### ACKNOWLEDGEMENT

We would like to extend our sincere thanks to Yashwantrao Bhonsale Institute of Technology and the Department of Computer Engineering for providing us with the opportunity and resources to develop our project, IoT-Based Disaster Management System. We thank our Guide T. P. Mhapankar Sir and our HOD and Project Co-ordinator Mr. P.D. Kate, who were with us every step of the way during this project, encouraging us with constant support. Finally, we thank everyone who contributed to the successful completion of this work.

#### REFERENCES

- 1) Prabodh Sakhardande, Sumeet Hanagal and Savita Kulkarni “Design of Disaster Management System using IoT Based Interconnected Network with Smart City Monitoring,” International Conference on Internet of Things and Applications (IOTA), pp. 185-190, IEEE 2016.
- 2) Liliya I. Besaleva and Alfred C. Weaver “Applications of Social Networks and Crowdsourcing for Disaster Management Improvement,” International Conference on Social Computing (SocialCom), pp. 740-741, IEEE 2013
- 3) Anand.S.Bhosle, Laxmikant.M.Gavhane “Forest Disaster management with Wireless Sensor Network,” International Conference on Electrical, Electronics, and Optimization Techniques (ICEEOT) – 2016
- 4) A. Monzon, “Smart cities concept and challenges bases for the assessment of smart city projects,” IEEE SmartCities and Green ICT Systems (SMARTGREENS)”, pp. 1–11, May 2015.
- 5) A. Zelenkauskaitė, N. Bessis, S. Sotiriadis, and E. Asimakopoulou, “Interconnectedness of complex systems of internet of things through social network analysis for disaster management”, Intelligent Networking and Collaborative Systems (INCoS), IEEE, pp. 503–508, 2012.





INTERNATIONAL  
STANDARD  
SERIAL  
NUMBER  
INDIA



# INTERNATIONAL JOURNAL OF INNOVATIVE RESEARCH

IN SCIENCE | ENGINEERING | TECHNOLOGY

 9940 572 462  6381 907 438  [ijirset@gmail.com](mailto:ijirset@gmail.com)



[www.ijirset.com](http://www.ijirset.com)

Scan to save the contact details