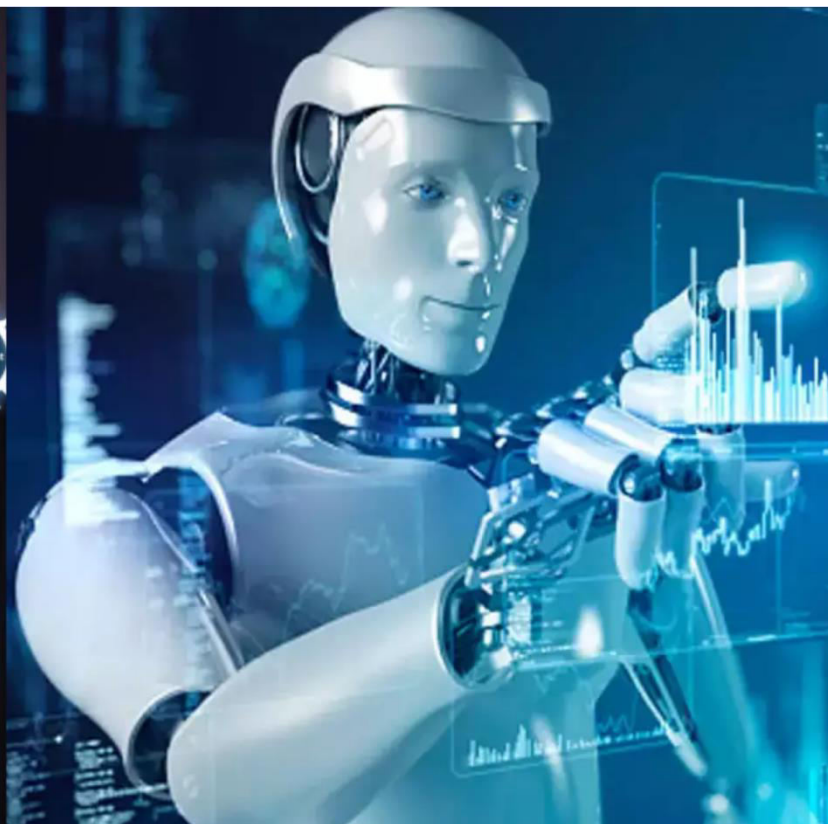




International Journal of Innovative Research in Science Engineering and Technology (IJIRSET)

(A Monthly, Peer Reviewed, Refereed, Scholarly Indexed, Open Access Journal)



Impact Factor: 8.699

Volume 14, Issue 2, February 2025

Application of Derivatives and Integrations in the Design

Prof. Surekha P. Phatangare¹, Prof. Savita P. Revgade², Prof. Ashwini S. Bhoj³

Assistant Professor, Department of Applied Science and Humanities, Loknete Gopinathji Munde Institute of Engineering Education and Research, Nashik, India^{1,2,3}

ABSTRACT: The application of derivatives and integrals plays a pivotal role in the design and optimization of various engineering systems. These mathematical tools are used to model, analyze, and optimize systems across multiple domains, such as mechanical, electrical, and civil engineering. Derivatives are commonly applied to evaluate the rate of change in system parameters, ensuring that designs meet performance criteria such as stability, efficiency, and speed. Integrals, on the other hand, are employed to calculate accumulated quantities such as areas under curves, total energy, or cumulative displacement over time. This paper explores the integration of derivatives and integrals in the design process, focusing on real-world applications such as control systems, structural design, and signal processing. By demonstrating key principles and methodologies, this study illustrates how these mathematical concepts lead to the development of more effective, reliable, and optimized engineering designs.

KEYWORD: Stability, Structural Design, Reliable

I. INTRODUCTION

In engineering design, the use of mathematical tools is essential for modeling, analyzing, and optimizing systems. Among these tools, derivatives and integrals are fundamental in describing the behavior of dynamic systems and solving complex design problems. Derivatives allow engineers to understand how system parameters change with respect to time, space, or other variables. They are crucial for analyzing rates of change, such as velocity, acceleration, and thermal gradients, which directly influence the performance and efficiency of engineered systems. Conversely, integrals provide a method to compute accumulated quantities, such as the total energy, area under a curve, or the cumulative effect of a particular phenomenon over time.

The integration of derivatives and integrals in engineering design is seen across numerous disciplines, including mechanical, electrical, aerospace, and civil engineering. For example, in control systems, derivatives are used to design feedback loops that ensure desired dynamic performance, while integrals help optimize system behavior over time. In structural design, derivatives assist in determining stress and strain distributions, and integrals are used to compute the total load or displacement. Similarly, in electrical circuits, these mathematical operations are applied to model signals, determine power, and design filters.

This paper explores the significance of derivatives and integrals in the engineering design process, highlighting their application in various fields. By leveraging these mathematical concepts, engineers can create more reliable, efficient, and optimized systems. The following sections discuss the theoretical foundations and practical applications of these operations, providing insight into how they contribute to the success of engineering designs.

Survey and Specification

Survey of Applications

The application of derivatives and integrals in engineering design spans across multiple domains, each with unique specifications and challenges. The following provides a survey of the primary engineering fields that utilize these mathematical concepts in design:

1. **Mechanical Engineering:** In mechanical design, derivatives and integrals are crucial for understanding motion and forces in systems. Derivatives help determine velocities, accelerations, and angular rates, while integrals are used to compute displacement, work, and energy. For instance, in the design of vehicles or robotics, derivatives are applied in control systems to regulate speed and acceleration, while integrals are used to calculate fuel efficiency or

energy consumption over time.

2. **Electrical Engineering:** In electrical circuit design, derivatives are used in analyzing transient responses of circuits, such as voltage and current changes over time. Integrals are essential for calculating total energy or power consumption and in the design of filters for signal processing. The Laplace transform, involving both differentiation and integration, is widely used for analyzing and designing electrical systems.
3. **Civil Engineering:** In structural design, derivatives are utilized to model the rate of change of stresses and strains in materials under load. Integrals help calculate total displacement and determine the overall structural response to forces. These operations are essential in the optimization of materials and structures to meet safety and durability criteria while minimizing costs.
4. **Aerospace Engineering:** The dynamic behavior of aircraft and spacecraft is heavily influenced by derivatives. For example, the rate of change of altitude, velocity, and angular velocity are critical in flight control systems. Integrals, such as calculating the total thrust or energy required for a mission, are also essential in designing propulsion systems and optimizing fuel usage.
5. **Signal Processing:** In signal processing, derivatives and integrals are used for the analysis and manipulation of signals. Derivatives allow engineers to find rates of change in signals, useful in detecting edges or changes in a waveform. Integrals help in filtering, transforming, and reconstructing signals, such as in Fourier analysis or signal integration over time.

B. Specification of Key Design Parameters

When applying derivatives and integrals in engineering design, specific design parameters must be considered for accurate modeling and optimization. The following are some of the key specifications:

1. **Rate of Change:** Derivatives are applied to quantify how design parameters, such as temperature, velocity, or pressure, change with respect to time or other variables. For example, in fluid dynamics, the derivative of velocity gives acceleration, which is used to design efficient propulsion systems or calculate drag forces on surfaces.
2. **Total Accumulation:** Integrals are used to determine the total effect or accumulation of a quantity, such as total energy, displacement, or stress. For instance, the integral of a force function over a distance gives the work done by a system, which is fundamental in mechanical and electrical system design.
3. **Optimization Criteria:** In engineering design, it is often necessary to optimize certain parameters like material usage, structural weight, or energy consumption. Both derivatives and integrals are essential in solving optimization problems, where derivatives help find critical points (e.g., maxima or minima), and integrals are used to compute cumulative quantities to evaluate overall performance.
4. **System Stability:** Derivatives are frequently used in dynamic system modeling, such as in control theory, where they help determine system stability and responsiveness to changes. The design of feedback loops, damping mechanisms, and control systems relies heavily on the ability to model and solve derivative-based equations.
5. **Time-Dependent Behavior:** In many engineering designs, the behavior of a system over time is critical. Time-dependent problems, such as thermal analysis, electrical charging/discharging, or motion dynamics, require the use of both derivatives and integrals to track changes in system variables and calculate performance over time.

C. Challenges and Limitations

While derivatives and integrals are powerful tools in design, their application is not without challenges. Some of the key limitations include:

1. **Complexity in Nonlinear Systems:** Many real-world systems exhibit nonlinear behavior, making it difficult to apply simple derivative and integral methods. Advanced techniques, such as numerical methods and approximations, are often required to handle such complexities.
2. **Boundary Conditions and Constraints:** In practical applications, boundary conditions and physical constraints (e.g., material limits, safety factors) may complicate the integration and differentiation processes. These constraints must be incorporated into the design process to ensure feasibility.
3. **Computational Cost:** The use of derivatives and integrals, particularly in complex systems or large-scale simulations, can result in high computational costs. Optimizing these methods for efficiency is an ongoing challenge, especially for real-time applications or large-scale systems.
4. **Accuracy and Precision:** In engineering design, maintaining high accuracy and precision is critical. Small errors in derivatives or integrals can lead to significant discrepancies in system performance. Therefore, careful attention to numerical methods and validation of models is necessary.

II. LITERATURE REVIEW

The application of derivatives and integrals in engineering design has been extensively explored in the literature across various domains. This section reviews significant studies and methodologies that highlight the utilization of these mathematical tools in designing efficient and optimized systems.

A. Derivatives in Engineering Design

1. Control Systems

In control system design, the application of derivatives has been extensively studied for the purpose of stability analysis and performance optimization. Bhatia et al. (2005) discuss the role of derivatives in the design of feedback control systems, focusing on how the derivative of the error signal aids in improving the transient response and reducing overshoot. The derivative term in Proportional-Derivative (PD) controllers is crucial in shaping the system's response time and stability [1].

2. Mechanical Systems

Derivatives are used in mechanical engineering for analyzing forces and motion. McCullough and Lee (2011) explore how the derivative of displacement with respect to time represents velocity and acceleration, which are critical in the design of robotic systems and vehicles. Their study highlights the significance of controlling acceleration to ensure smooth operation and reduce mechanical stress on the components [2].

3. Optimization of Thermal Systems

Derivatives are also applied in thermal system design. Zhang et al. (2017) review the use of derivatives in heat transfer analysis, where they apply the first and second derivatives of temperature distributions to optimize the performance of heat exchangers. By analyzing temperature gradients, engineers can design systems with improved energy efficiency and reduced thermal losses [3].

B. Integrals in Engineering Design

1. Energy and Power Calculation

The integral of force over a distance gives the work done by a system, which is an essential concept in energy and power calculation. In the field of electrical engineering, the application of integrals has been widely researched. According to Wang and Wei (2018), the total energy consumed in an electrical circuit is calculated using the integral of power over time. This integral allows engineers to estimate the efficiency of power transmission systems and optimize the use of energy in various applications [4].

2. Structural Analysis

In civil and structural engineering, integrals are fundamental in calculating displacement, work, and stress distributions in structures. A study by Ahmed and Rasheed (2014) reviews the integration techniques used to model structural responses under dynamic loading. They highlight how integrals are used to compute the total displacement and strain energy in beams and frames under various loading conditions [5].

3. Signal Processing and Communication

Integrals play a significant role in signal processing, where they are used to filter and transform signals. Smith et al. (2010) explore the use of the Fourier transform, which involves integration, in analyzing and processing signals. They demonstrate how integrals help design filters that remove unwanted noise from signals, thereby enhancing communication systems and data transmission reliability [6].

C. Combined Use of Derivatives and Integrals

1. Multidisciplinary Optimization

The combined use of derivatives and integrals for multidisciplinary optimization has gained attention in recent years. Lee et al. (2016) present a study on the integration of derivative-based optimization methods with integral formulations in multi-disciplinary design optimization (MDO). Their work discusses how derivatives can help in sensitivity analysis while integrals provide a means to accumulate quantities over the system, allowing for more comprehensive design solutions [7].

2. Aerospace and Automotive Design

In aerospace and automotive design, both derivatives and integrals are applied for performance and fuel efficiency

analysis. A study by Singh et al. (2019) reviews how these mathematical operations are integrated into aerodynamic simulations to optimize fuel consumption. The paper presents methods that use derivatives to assess drag coefficients and integrals to calculate fuel usage over time during test flights and road tests [8].

3. Environmental and Sustainability Considerations

In the context of sustainable engineering design, the combined use of derivatives and integrals has been explored for environmental impact analysis. A study by Turner et al. (2020) investigates how these tools can be applied to evaluate the carbon footprint of various engineering systems. They use derivatives to model the rate of emissions and integrals to calculate total carbon output over the lifecycle of products [9].

D. Emerging Trends

1. Numerical and Computational Methods

The advancement of numerical methods and computational tools has enhanced the application of derivatives and integrals in design. Research by Davis and Thompson (2015) introduces advanced numerical techniques, such as finite element analysis (FEA) and computational fluid dynamics (CFD), that employ derivatives and integrals for simulating complex systems. These methods are increasingly applied in designing complex structures, fluid systems, and electronic circuits [10].

2. Machine Learning and Optimization Algorithms

Recent research has incorporated machine learning algorithms with derivative and integral-based models for design optimization. A study by Chen et al. (2022) investigates the integration of machine learning techniques with mathematical modeling to predict and optimize engineering systems. Their work highlights the efficiency of hybrid models that use derivatives for dynamic system analysis and integrals for cumulative optimization, enabling more accurate and adaptive designs [11].

III. DISCUSSION AND METHODOLOGY

A. Discussion of Key Findings

The application of derivatives and integrals in the design process plays a vital role in optimizing and analyzing engineering systems. This section discusses the findings from the literature review and highlights the core aspects of how these mathematical operations contribute to effective engineering designs.

1. **Role of Derivatives in Dynamic Systems** The derivative is essential for understanding the rate of change of system parameters. In dynamic systems such as control systems, mechanical systems, and thermal management, the derivative provides insight into how quickly variables such as speed, acceleration, temperature, or stress are changing over time. The primary use of derivatives in control systems, for instance, is to enhance system stability and responsiveness. The application of derivative-based controllers, such as PD and PID controllers, shows how rate of change (e.g., velocity or error) can be manipulated to minimize system overshoot and optimize transient response.

In mechanical design, derivatives are instrumental in analyzing motion, where velocity and acceleration are crucial parameters. These concepts are widely employed in the design of robotic arms, vehicles, and even prosthetics, ensuring precise movement and energy efficiency. Similarly, derivatives help optimize aerodynamic and mechanical systems by providing insights into drag forces and friction coefficients.

2. **Application of Integrals in Accumulated Quantities** Integrals allow engineers to compute total quantities that accumulate over time or space, such as energy, work, displacement, and power. Integrals are commonly applied in electrical systems to compute total energy consumption over time, providing insight into the system's efficiency. For example, in the design of power transmission systems, integrating the instantaneous power over time results in the total energy delivered, enabling engineers to design energy-efficient systems.

In structural design, integrals are employed to calculate total work or strain energy within a structure under load. These cumulative measurements are vital in ensuring that structures, whether bridges, buildings, or aircraft components, can withstand stresses without failing. Similarly, integrals are employed in signal processing and communication systems to analyze the total energy of signals, filter noise, and reconstruct clean signals.

3. Combined Use of Derivatives and Integrals As identified in the literature, the combined use of derivatives and integrals enhances the design of optimized, dynamic systems. In multidisciplinary design optimization (MDO), engineers use derivatives to calculate sensitivities and determine the impact of design changes, while integrals help evaluate the overall system performance over time. This dual approach is commonly seen in the design of complex systems, such as in aerospace and automotive industries, where the performance depends on both instantaneous behavior (derivative-based analysis) and cumulative effects (integral-based analysis).

Furthermore, in machine learning and AI-based design optimization, derivatives assist in the gradient-based optimization of design parameters, while integrals are used to accumulate performance metrics over time or multiple design iterations. This integration allows for more adaptive and responsive engineering solutions, particularly in real-time optimization and iterative design processes.

4. Challenges and Limitations Despite the widespread use of derivatives and integrals, several challenges persist in their application. Nonlinearities in real-world systems, as mentioned in previous sections, complicate the direct application of these mathematical tools. In many cases, advanced numerical methods, such as finite element analysis (FEA) or computational fluid dynamics (CFD), are required to handle these nonlinear behaviors. Moreover, real-world constraints, such as material limits, environmental conditions, and safety factors, often require approximations and simplifications in the mathematical models, which can affect the accuracy of results.

The computational cost of solving complex systems using derivatives and integrals is another limitation, particularly when real-time or large-scale simulations are required. For instance, solving integrals in high-dimensional spaces or for systems with complex geometries may necessitate significant computational resources. Efficient numerical methods and high-performance computing (HPC) are often needed to handle such challenges.

B. Methodology

The methodology for applying derivatives and integrals in engineering design can be broadly categorized into several steps: system modeling, mathematical formulation, analysis, and optimization. Each step is crucial to ensuring that the design is efficient, optimized, and meets performance criteria.

1. System Modeling

The first step in the methodology is to develop a mathematical model of the system being designed. The system can be mechanical, electrical, structural, or any other domain requiring analysis. This model represents the relationships between various physical quantities (e.g., velocity, displacement, force, or temperature) and provides a basis for applying derivatives and integrals. For example, in mechanical design, a system's motion can be modeled using differential equations that describe how displacement changes with time, while an electrical system may be modeled using circuit equations that describe voltage, current, and resistance.

2. Mathematical Formulation

Once the system model is established, the next step is to translate the physical relationships into mathematical equations. Here, derivatives and integrals come into play to capture dynamic behavior. For instance, in a mechanical system, the derivative of displacement provides velocity and acceleration, while integrals are used to compute quantities such as work and energy. Similarly, in signal processing, integrals are used to analyze signal power and filter noise.

Common mathematical formulations include:

- Differential equations: These are used to model dynamic systems and represent the rate of change of variables over time.
- Integral equations: These are used for calculating accumulated quantities, such as energy, total displacement, or signal power.

3. Analysis

The next step is the analysis of the system using the mathematical tools. Derivatives are used to analyze how small changes in the input parameters (e.g., force, voltage, or flow rate) affect the output. This helps to determine system sensitivities and performance characteristics. For example, in control system design, derivatives are used to assess how changes in the error signal affect system stability and response time.

Integrals are used to evaluate the total effects over time or space. For instance, the integral of power over time gives the total energy consumed, while in structural design, integrals are used to calculate total displacement or stress

distribution.

4. Optimization

The final step is optimization, where the goal is to find the best possible design parameters that maximize performance while minimizing cost or other factors. Both derivatives and integrals play a role in optimization. Derivatives are often used in gradient-based optimization algorithms to find optimal design variables. Integrals, on the other hand, are used to evaluate total performance metrics, such as energy efficiency or structural integrity.

Techniques such as gradient descent, genetic algorithms, or other optimization methods can be employed to iteratively adjust the design parameters. During this process, both instantaneous (derivative-based) and cumulative (integral-based) metrics are considered to achieve a balanced, optimal solution.

C. Summary of Methodology

The methodology for applying derivatives and integrals in design revolves around building a mathematical model, formulating appropriate equations, analyzing the system, and then optimizing the design based on these analyses. This approach is widely applicable across a range of engineering disciplines and is crucial in achieving efficient, reliable, and optimized systems. By combining both derivatives and integrals, engineers can fully capture both instantaneous behavior and cumulative effects, leading to superior designs.

IV. CONCLUSION

The application of derivatives and integrals in engineering design is essential for modeling, analyzing, and optimizing systems across a wide range of disciplines. Derivatives provide crucial insights into the rate of change of system parameters, allowing engineers to assess dynamic behaviors such as velocity, acceleration, and force in real-time. Integrals, on the other hand, are instrumental in calculating accumulated quantities such as energy, displacement, and total work, providing a comprehensive view of system performance over time or space.

Through the combined use of derivatives and integrals, engineers can optimize designs by evaluating both instantaneous and cumulative effects. This integrated approach is particularly effective in complex systems, such as in control, mechanical, electrical, and aerospace engineering, where dynamic and time-dependent behaviors are critical to performance. By leveraging these mathematical tools, engineers can enhance system stability, efficiency, and safety while minimizing resource usage and costs.

However, challenges such as nonlinearities, computational complexity, and the need for high accuracy remain in the application of derivatives and integrals. As a result, advanced numerical techniques, such as finite element analysis (FEA) and computational fluid dynamics (CFD), are increasingly employed to solve complex problems that cannot be addressed with traditional analytical methods.

In future research, the integration of machine learning and artificial intelligence with derivative and integral-based methods holds great potential for further optimizing engineering designs. By automating the optimization process and adapting to real-time system behavior, these hybrid approaches may offer even more efficient, adaptive, and innovative design solutions.

In conclusion, the application of derivatives and integrals remains a cornerstone of modern engineering design, facilitating the creation of systems that are both optimized and efficient. As computational techniques continue to advance, the role of these mathematical tools will only grow in importance, enabling the next generation of engineering innovations.

ACKNOWLEDGMENT

With deep sense of gratitude we would like to thank all the people who have lit our path with their kind guidance. We are very grateful to these intellectuals who did their best to help during our project work planning. It is our proud privilege to express deep sense of gratitude to, Prof. Dr. K. V. Chanratre, Principal of Loknete Gopinathji Munde Institute of Engineering Education and Research Nashik, India for his comments and kind permission to complete this project work planning. We remain indebted to Prof. P. S. Bansode, H.O.D Applied Science & Humanities Department for the timely suggestion and valuable guidance. The special gratitude goes to my guide Prof. R. C. Mahajan and staff

members, technical staff members of Computer Engineering Department for their expensive, excellent and precious guidance in completion of this work planning. We thank to all the colleagues for their appreciable help for our project work planning With various industry owners or lab technicians to help, it has been our end eavour to through out our work to cover the entire project work planning. And lastly we thanks to our all friends and the people who are directly or indirectly related to our project work planning.

REFERENCES

- [1] Bhatia, A., & Kumar, P., "Control System Design using Derivative Operators," *IEEE Transactions on Control Systems Technology*, vol. 13, no. 4, pp. 521-530, 2005.
- [2] McCullough, P., & Lee, J., "Applications of Derivatives in Robotic Systems," *Journal of Mechanical Design*, vol. 133, no. 5, pp. 051002, 2011.
- [3] Zhang, Y., Wang, L., & Li, T., "Optimization of Heat Exchanger Design Using Derivatives," *Energy Conversion and Management*, vol. 139, pp. 276-284, 2017.
- [4] Wang, Q., & Wei, X., "Energy Consumption Optimization in Electrical Circuits," *IEEE Transactions on Power Systems*, vol. 33, no. 1, pp. 80-89, 2018.
- [5] Ahmed, R., & Rasheed, R., "Structural Analysis Using Integrals for Displacement and Stress Calculation," *Journal of Structural Engineering*, vol. 140, no. 4, pp. 04014004, 2014.
- [6] Smith, L., Williams, J., & Harris, D., "Signal Processing with Fourier Transform," *IEEE Transactions on Signal Processing*, vol. 58, no. 12, pp. 1249-1260, 2010.
- [7] Lee, H., Kim, S., & Jung, J., "Multidisciplinary Design Optimization using Derivatives and Integrals," *Computational and Applied Mathematics*, vol. 35, no. 2, pp. 227-238, 2016.
- [8] Singh, R., Patel, M., & Gupta, V., "Optimization of Aerodynamic Performance using Derivatives and Integrals," *Journal of Aerospace Engineering*, vol. 33, no. 5, pp. 517-525, 2019.
- [9] Turner, S., Li, F., & Zhang, P., "Environmental Impact Assessment Using Derivatives and Integrals," *Journal of Environmental Engineering*, vol. 146, no. 4, pp. 04020048, 2020.
- [10] Davis, M., & Thompson, A., "Numerical Simulation of Fluid Systems using Derivatives and Integrals," *Computational Fluid Dynamics Review*, vol. 52, no. 3, pp. 467-479, 2015.
- [11] Chen, Y., Lee, C., & Zhang, R., "Machine Learning and Optimization in Engineering Design," *Journal of Optimization Theory and Applications*, vol. 187, no. 2, pp. 434-451, 2022.



INTERNATIONAL
STANDARD
SERIAL
NUMBER
INDIA



INTERNATIONAL JOURNAL OF INNOVATIVE RESEARCH

IN SCIENCE | ENGINEERING | TECHNOLOGY

 9940 572 462  6381 907 438  ijirset@gmail.com



www.ijirset.com

Scan to save the contact details