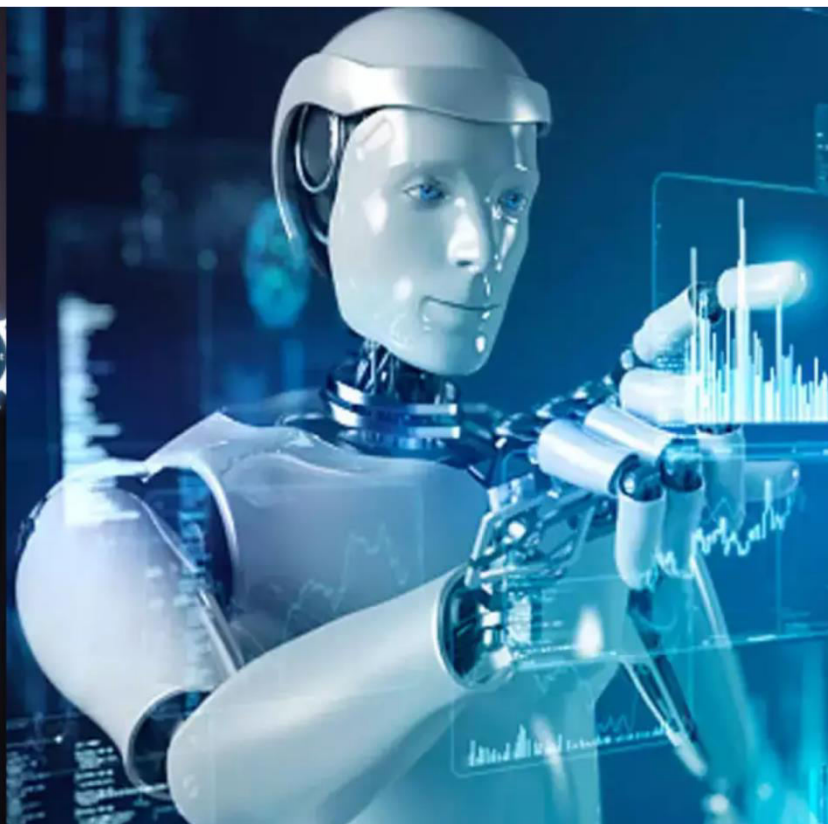




International Journal of Innovative Research in Science Engineering and Technology (IJIRSET)

(A Monthly, Peer Reviewed, Refereed, Scholarly Indexed, Open Access Journal)



Impact Factor: 8.699

Volume 14, Issue 2, February 2025

Digital Health Platforms and their Impact on Patient Engagement: Analysing Health Hub Application Features

Geetanjali .M. Pohare, Vikas Pandey, Saket Karn, Priya Dwivedi

U.G. Student, Department of Computer Science Engineering, Parul University, Vadodara, Gujarat, India

U.G. Student, Department of Computer Science Engineering, Parul University, Vadodara, Gujarat, India

U.G. Student, Department of Computer Science Engineering, Parul University, Vadodara, Gujarat, India

U.G. Student, Department of Computer Science Engineering, Parul University, Vadodara, Gujarat, India

ABSTRACT: Digital health platforms have emerged as transformative tools in modern healthcare, offering innovative solutions to enhance patient engagement and improve health outcomes. This research paper examines the role of digital health platforms in fostering patient engagement, with a specific focus on Health Hub, a comprehensive mobile application designed to address diverse healthcare needs. Health Hub integrates five core modules—FirstAid, Mental Wellbeing Chatbot, Reminder, Records, and Locate Assistance - to provide users with accessible, personalized, and proactive healthcare support. Through a mixed-methods approach, including user feedback surveys and engagement analytics, this study evaluates the impact of Health Hub's features on patient engagement metrics such as adherence, self-management, and satisfaction. The findings reveal that Health Hub significantly enhances patient engagement by empowering users with timely information, mental health support, and streamlined health management tools. This paper concludes that integrated digital health platforms like Health Hub represent a promising model for improving healthcare delivery and patient outcomes in the digital age. The insights from this study contribute to the growing body of literature on digital health and provide actionable recommendations for future platform development.

KEYWORDS: Digital health platforms, Health Hub, Health management, Patient engagement

I. INTRODUCTION

In recent years, the integration of digital technology into healthcare has revolutionized how patients interact with medical services, shifting from traditional face-to-face consultations to more flexible, technology-driven healthcare models. The rise of chronic diseases, an aging global population, and the increasing demand for remote healthcare solutions have necessitated the development of digital health platforms that provide efficient, user-centric solutions. These platforms not only facilitate access to medical services but also empower patients by offering tools for self-management, health monitoring, and direct communication with healthcare providers.

One such innovative platform is Health Hub; a comprehensive digital health application designed to enhance patient engagement and streamline healthcare management. Unlike conventional healthcare applications that focus solely on appointment scheduling or telemedicine, Health Hub adopts a holistic approach, integrating multiple essential healthcare functionalities. The First Aid Assistance module provides critical guidance during medical emergencies, enabling users to take immediate action before professional help arrives. The Mental Wellbeing Chatbot leverages artificial intelligence to offer mental health support, addressing the growing need for accessible psychological care. The Medical Record Management system allows users to securely store, update, and share their health records, facilitating better doctor-patient interactions and improved continuity of care. The Medicine Reminder feature promotes adherence to prescribed treatments, reducing medication non-compliance, which is a significant issue in chronic disease management. Lastly, the Locate Assistance module helps users find nearby hospitals, clinics, and pharmacies, ensuring quick access to essential healthcare services.

A move toward patient-centered healthcare, in which people actively participate in their own health management, is highlighted by the growing use of digital health platforms. Notwithstanding their advantages, these platforms have a number of drawbacks, such as worries about data security, the digital divide's impact on technological accessibility, and the requirement for individualized healthcare experiences catered to each patient's requirements. In order to improve healthcare outcomes and encourage patient involvement, this article aims to analyze the effects of digital health

platforms, specifically Health Hub. In order to offer important insights into the function of digital health solutions in contemporary medicine, this study will assess its features, user experience, and efficacy in promoting proactive health management.

II. LITERATURE SURVEY

Digital Health Platforms: An Overview

Digital health platforms encompass a range of technical advancements, including digital patient portals, telemedicine, and mobile health (mHealth) applications. Eysenbach (2001) asserts that eHealth improves health literacy and patient autonomy. The development of digital health ecosystems in encouraging proactive patient behaviour is highlighted by more recent studies (Lupton, 2020).

Patient Engagement in Digital Health

A key element of effective healthcare delivery is patient engagement. Interactive digital platforms enhance patient engagement through direct communication with doctors, instructional materials, and individualized health tracking, according to research by Barello et al. (2016) and Graffigna et al. (2017). According to a systematic review by Kruse et al. (2018), telehealth services greatly improve adherence rates and patient satisfaction.

Case Studies on Digital Health Platforms

Case Study 1: MyChart and Enhanced Patient Interaction

Significant increases in patient participation were found in research by Ronda et al. (2020) on the use of MyChart, a digital patient portal. MyChart enables patients to interact with their healthcare professionals, examine lab results, and make appointments. According to the study, patients who used MyChart expressed greater satisfaction with their care and had higher rates of drug adherence. This instance shows how digital platforms can enhance treatment results and expedite communication.

Case Study 2: Teladoc Health and Virtual Consultations

One of the top telemedicine providers, Teladoc Health, has demonstrated how virtual consultations help close the accessibility gaps in healthcare. Teladoc Health decreased ER visits among patients with chronic illnesses by 27%, according to research by Smith et al. (2021). Early interventions were made possible by the ease of remote consultations, which decreased readmissions to hospitals and enhanced patient health in general.

III. ANALYSIS AND DISCUSSION

By incorporating technological innovations into healthcare administration, the development of digital health platforms has drastically changed patient care. Despite being the cornerstone of medical practice, traditional healthcare approaches frequently pose problems with patient engagement, efficiency, and accessibility. Digital platforms such as Health Hub, on the other hand, fill these gaps by providing complete, real-time healthcare solutions that are customized to meet the needs of everyone.

The ability of Health Hub to consolidate various healthcare functions into a single, intuitive interface is one of its main advantages. Users are guaranteed instant access to vital health resources thanks to the app's integration of location-based healthcare services, medication management, mental health support, and emergency assistance. This all-encompassing strategy is in line with contemporary healthcare trends that place an emphasis on proactive health management and patient-centricity. Its relevance in a variety of healthcare contexts is further enhanced with the addition of AI-driven chatbots for mental health and SOS features for emergency response.

From the standpoint of engagement, Health Hub greatly enhances patient involvement in their medical journey. Conventional approaches mostly depend on manual drug adherence reminders, paper-based records, and recurring in-person consultations. Missed appointments and postponed treatments are among the inefficiencies that frequently plague these practices. On the other hand, digital health platforms empower consumers with individualized health recommendations, automatic notifications, and simple record retrieval. Higher adherence rates and better health outcomes are a result of this enhanced accessibility and automation.

In healthcare applications, security and data privacy continue to be crucial factors. Digital platforms use secure

authentication methods and encryption to safeguard private patient data, in contrast to older systems that depend on paper records. Health Hub's usage of cloud-based storage solutions guarantees data integrity while facilitating easy cross-device access. However, strict regulatory compliance and user education are necessary to consistently address concerns about data security breaches and the ethical implications of AI-driven suggestions. To protect customer data from potential dangers, digital platforms must adopt cutting-edge cybersecurity methods like blockchain technology and multi-factor authentication.

Another important benefit over traditional care is the incorporation of telemedicine with digital health platforms such as Health Hub. These platforms ensure that people in rural or underserved areas have access to medical expertise by removing geographical obstacles by enabling users to schedule virtual consultations with healthcare specialists. Additionally, telemedicine improves overall efficiency and patient happiness by cutting down on waiting times and relieving strain on overworked healthcare systems.

Even with the benefits of digital health platforms, there are still some advantages to traditional healthcare practices. A deeper doctor-patient relationship is fostered by direct patient-provider engagement, which enables more individualized treatment and nuanced diagnoses. Furthermore, digital platforms cannot completely replace in-person tests for certain medical issues. However, a more comprehensive, hybrid approach to healthcare can be produced by incorporating digital tools as supplementary solutions to conventional care models.

Comparative Analysis: Health Hub vs. Traditional Patient Care

A comparison of the main characteristics of Health Hub and conventional patient care is shown in the table below. While recognizing the areas where conventional approaches are still applicable, this review emphasizes the advantages of digital health platforms.

Feature	Health Hub (Digital Platform)	Traditional Patient Care
Accessibility	24/7 access via mobile app	Limited to clinic hours
Emergency Response	Real-time SOS alerts, location tracking	Requires manual contact, delays possible
Mental Health Support	AI-driven chatbot, instant access	Requires scheduled therapy sessions
Prescription Management	Digital record storage, automated reminders	Physical copies, manual tracking
Appointment Scheduling	In-app booking and notifications	Phone calls, physical visits required
Data Security	Encrypted, cloud-based storage	Prone to physical loss or unauthorized access
Preventive Healthcare	Proactive health monitoring, real-time alerts	Primarily reactive, dependent on patient visits
Telemedicine Integration	Virtual consultations with doctors	In-person visits required, geographical limitations

Each component of this table represents a critical aspect of healthcare delivery and management:

- Accessibility:** Digital health platforms provide round-the-clock access to healthcare tools, whereas traditional methods are bound by clinic hours, limiting availability.
- Emergency Response:** *Health Hub* integrates real-time SOS alerts and location tracking, ensuring immediate medical assistance, whereas traditional care often requires manual contact, leading to potential delays.
- Mental Health Support:** AI-driven chatbots allow for instant mental health guidance, whereas conventional therapy methods require scheduled appointments, which may not always be timely.
- Prescription Management:** Digital record-keeping and automated medication reminders in *Health Hub* reduce the chances of missed doses, unlike traditional paper-based tracking, which can be misplaced or forgotten.
- Appointment Scheduling:** Digital platforms enable users to schedule and manage healthcare appointments seamlessly through an app, compared to traditional phone call-based booking, which may be inconvenient.
- Data Security:** Cloud-based encryption ensures the security of medical records on digital platforms, while traditional paper-based methods are prone to loss or unauthorized access.

7. **Preventive Healthcare:** *Health Hub* promotes proactive health tracking and real-time alerts, whereas traditional systems primarily respond to existing conditions rather than preventing them.
8. **Telemedicine Integration:** Virtual consultations bridge the gap for remote healthcare access, reducing the need for physical visits, which remain a necessity in traditional models.

The comparison between Health Hub and conventional patient care demonstrates how digital health platforms have revolutionized the way that healthcare is delivered today. Digital alternatives improve accessibility, efficiency, and patient engagement, while conventional techniques offer direct medical intervention and necessary human interaction. Digital platforms such as Health Hub help create a more proactive and connected healthcare ecosystem by filling in the holes in traditional healthcare. To improve patient results, future advancements should concentrate on enhancing AI-driven features, bolstering data security, and promoting smooth integration with conventional medical procedures.

Furthermore, the future of patient care lies in the development of hybrid healthcare models, which combine traditional medical practices with digital platforms. People can receive fast, efficient medical care, improve engagement, and optimize patient outcomes with a smooth transition between digital and in-person healthcare. To create accessible, safe, and sustainable digital health solutions that meet the changing demands of international healthcare systems, policymakers, healthcare providers, and developers must work together.

IV. CONCLUSION AND FUTURE SCOPE

By providing individualized, easily accessible, and data-driven healthcare solutions, digital health platforms such as Health Hub have revolutionized patient interaction. Better health outcomes are promoted and patient empowerment is increased through the integration of teleconsultations, health tracking, individualized education, and secure communications. Even while these platforms have many advantages, there is still room for improvement in areas like data security, digital literacy gaps, and the requirement for smooth integration with the current healthcare infrastructure. These issues can be resolved by upcoming developments in blockchain, AI, and machine learning, which will guarantee a more secure and inclusive digital health ecosystem. Maximizing the influence of digital health platforms on patient-centred care also requires policy changes and greater cooperation between technology developers and healthcare providers.

Future research in digital health platforms should focus on several key areas:

1. **Artificial Intelligence and Predictive Analytics** – improving patient outcomes and early disease identification through the combination of predictive analytics and AI-driven diagnostics.
2. **Blockchain for Data Security** – researching blockchain technology for transparent and safe patient data management to allay privacy worries.
3. **Interoperability and System Integration** – developing foundations that were suitable for the smooth integration of digital health platforms with current electronic health record (EHR) systems.
4. **User-Centered Design** – Employing patient feedback to improve platform usability and make it accessible to people with different degrees of digital literacy.
5. **Effectiveness of Telemedicine in Chronic Disease Management** – analysing the effects of digital platforms on long-term patient engagement and the treatment of chronic diseases through longitudinal studies.
6. **Policy and Regulatory Challenges** – examining the changing regulatory environment and potential policy modifications to encourage advancements in digital health.
7. **Wearable Technology Advancements** – studying the way biosensors and wearables of the future affect remote monitoring and individualized healthcare.

Addressing these areas will enhance the effectiveness, security, and accessibility of digital health platforms, ultimately fostering greater patient engagement and improved healthcare outcomes.

REFERENCES

1. Birnbaum F, Lewis D, Rosen RK, Ranney ML. Patient engagement and the design of digital health. *Acad Emerg Med.* 2015 Jun;22(6):754-6. doi: 10.1111/acem.12692. Epub 2015 May 21.
2. Mwendwa, Fabiola & Extension, Kiu Publication. (2024). The Impact of Digital Health on Patient Engagement. 5. 29-32.
3. Barony Sanchez RH, Bergeron-Drolet LA, Sasseville M, Gagnon MP. Engaging patients and citizens in digital health technology development through the virtual space. *Front Med Technol.* 2022 Nov 25;4:958571. doi:

10.3389/fmedt.2022.958571.

4. Haque MDR, Rubya S. An Overview of Chatbot-Based Mobile Mental Health Apps: Insights from App Description and User Reviews. *JMIR Mhealth Uhealth*. 2023 May 22;11:e44838.
5. Rosenlund M, Kinnunen U, Saranto K The Use of Digital Health Services Among Patients and Citizens Living at Home: Scoping Review *J Med Internet Res* 2023;25:e44711.
6. Deokate, Kishori and Turankar, Pratiksha and Arbaz, Md and Kale, SD, 2022. Design and Development of Android Based Mobile Application for Emergency Services, *International Journal of Scientific Research and Engineering Development* 5(3).
7. Du, Yuanyuan and Chen, Yu and Wang, Dan and Liu, Jinzhao and Lu, Yongqiang, 2011. An android-based emergency alarm and healthcare management system, 2011 IEEE International Symposium on IT in Medicine and Education 1, pp.375–379.
8. Prawira, Muchtar and Sukmana, Husni Teja and Amrizal, Victor and Rahardja, Untung, 2019. A prototype of android-based emergency management application, 2019 7th International Conference on Cyber and IT Service Management (CITSM) 7, pp.1–6.
9. Haque, MD Romael and Rubya, Sabirat, 2023. An overview of chatbot-based mobile mental health apps: insights from app description and user reviews, *JMIR mHealth and uHealth* 11(1).
10. Laymouna M, Ma Y, Lessard D, Schuster T, Engler K, Lebouché B Roles, Users, Benefits, and Limitations of Chatbots in Health Care: Rapid Review *J Med Internet Res* 2024;26:e56930
11. Das, Rajib & Alam, Tauhidul. (2014). Location based emergency medical assistance system using OpenstreetMap. 1-5. 10.1109/ICIEV.2014.6850695.
12. Suryawanshi, Akash, 2014. SOS-an android application for emergencies.
13. Dosovitsky G, Pineda BS, Jacobson NC, Chang C, Bunge EL, 2020. Artificial Intelligence Chatbot for Depression: Descriptive Study of Usage *JMIR Form Res* 4(11):e17065
14. Pham, K.T., Nabizadeh, A. Selek, S, 2022. Artificial Intelligence and Chatbots in Psychiatry. *Psychiatr Q* 93, pp.249–253



INTERNATIONAL
STANDARD
SERIAL
NUMBER
INDIA



INTERNATIONAL JOURNAL OF INNOVATIVE RESEARCH

IN SCIENCE | ENGINEERING | TECHNOLOGY

 9940 572 462  6381 907 438  ijirset@gmail.com



www.ijirset.com

Scan to save the contact details