



International Journal of Innovative Research in Science Engineering and Technology (IJIRSET)

(A Monthly, Peer Reviewed, Refereed, Scholarly Indexed, Open Access Journal)



Impact Factor: 8.699

Volume 14, Issue 2, February 2025

A Study on Umbilical Cord Blood Use and Real-Time Decision Making

Dr C K Gomathy, Dr V Geetha, P. Dhanusri, S. Nivethitha, Sistla Srikari

Department of CSE, Sri Chandrasekharendra Saraswathi Viswa Mahavidyalaya, Enathur, Tamil Nadu, India

ABSTRACT: This article delves into the differences between Electronic Medical Records (EMR) and Electronic Health Records (EHR) and their critical roles in the use of umbilical cord blood (UCB) in medical treatments and decision-making. UCB, a valuable resource for regenerative medicine and hematopoietic stem cell transplantation (HSCT), requires efficient data management to maximize its potential. EMR and EHR systems have become essential tools in managing patient data, ensuring donor compatibility, and making informed, timely medical decisions. We will explore how these systems, combined with advanced algorithms, are transforming real-time decision-making in healthcare, particularly in UCB use and stem cell therapy.

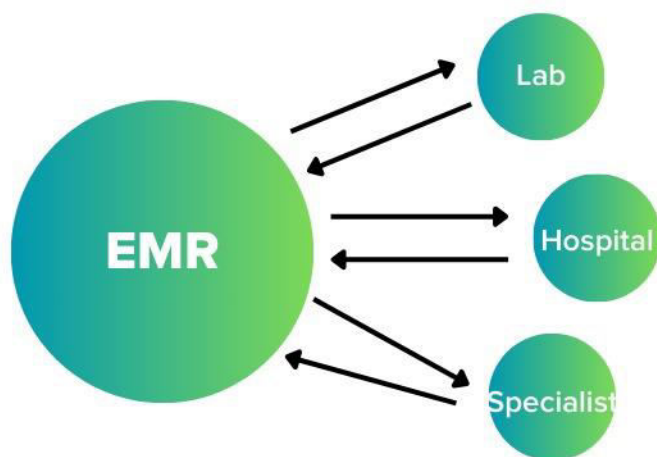
KEYWORDS: Regenerative Medicine, Healthcare Informatics, Biomedical Data Processing

I. INTRODUCTION

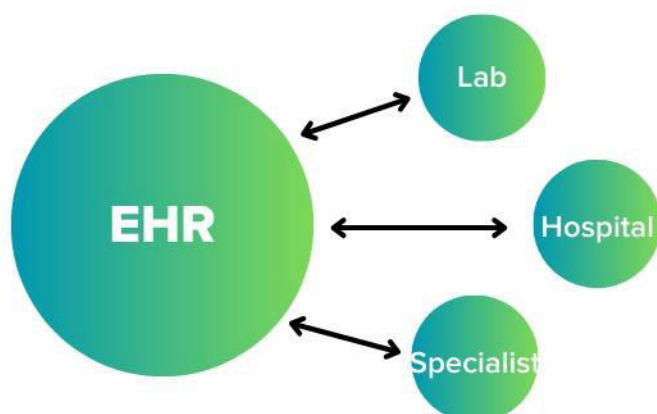
The evolution of digital healthcare tools has reshaped the medical landscape. Electronic Medical Records (EMR) and Electronic Health Records (EHR) are two key technologies contributing to this transformation, especially in handling large amounts of patient data. EMR refers to the digital version of a patient's records within a single healthcare facility, while EHR systems offer a more comprehensive view by integrating patient data across multiple organizations.

The emergence of UCB as a source of hematopoietic stem cells (HSCs) has further underscored the need for advanced health data management. UCB, which contains stem cells used in treating various blood disorders, cancers, and metabolic diseases, must be matched precisely to ensure successful outcomes. EMR and EHR systems streamline the process of matching donors to recipients, while real-time decision-making becomes more efficient with the integration of these digital health records into clinical practices.

This article outlines how EMR and EHR systems impact UCB use, with an emphasis on algorithms, data management, and real-time decision-making processes that improve patient outcomes.



To keep patient records accurate, practices using EMR must manually transfer and enter data each time the patient is seen.



Every provider can update a patient's EHR, creating a single, complete record of all health information.

II. DISTINGUISHING EMR FROM EHR

Though often used interchangeably, EMR and EHR are distinct systems that serve different purposes:

a. EMR (Electronic Medical Record):

EMR is a digital version of patient records primarily maintained within a single healthcare facility. It includes detailed clinical data from past visits, medication history, and laboratory results, among others. However, EMRs are limited to one healthcare provider or system, restricting data access outside that organization.

b. EHR (Electronic Health Record):

EHR, on the other hand, is designed for interoperability. It compiles patient information across multiple facilities and care providers, offering a more comprehensive and holistic view of the patient's health. This makes EHRs a valuable tool for collaborative care and informed medical decisions, particularly when patients require treatments like UCB transplantation that involve data sharing across institutions.

III. IMPACT OF EMR AND EHR ON UMBILICAL CORD BLOOD USE

UCB transplantation involves complex decisions about donor-recipient matching, treatment planning, and post-transplant monitoring. Both EMR and EHR systems provide critical support by:

a. Donor Matching:

Matching a UCB donor with a recipient requires careful evaluation of various criteria, such as human leukocyte antigen (HLA) compatibility, age, and other medical factors. EHRs can pool data from multiple databases and health networks, improving the chances of finding a suitable match more quickly.

b. Decision-Making Support:

EHR systems improve the ability of healthcare providers to make real-time decisions. A clinician can access a patient's full medical history, genetic data, and other pertinent information with a few clicks, allowing for better-informed decisions during critical moments, such as before initiating a UCB transplant.

c. Monitoring Outcomes:

Post-transplant follow-up is vital, as complications like graft-versus-host disease (GVHD) can arise. EHRs enable clinicians to monitor the patient's condition in real time, alerting them when adverse events occur, thus enhancing patient care.

IV. ALGORITHMS AND DATA MANAGEMENT

Algorithms and advanced data processing techniques significantly enhance the effectiveness of EMR and EHR systems in managing UCB-related treatments.

a. Donor Matching Algorithms:

HLA compatibility between a UCB donor and recipient is a key determinant in transplantation success. Algorithms use predictive analytics to analyze donor and recipient data for optimal HLA matching. This can minimize the risk of transplant rejection and improve long-term survival rates.

b. Predictive Modeling:

Algorithms integrated into EHRs can forecast the likelihood of transplant success by analyzing historical data from similar cases. By comparing factors such as patient age, comorbidities, and previous treatments, these predictive models provide valuable insights that help in planning the course of care.

c. Clinical Decision Support Systems (CDSS):

EMR and EHR systems often incorporate CDSS, which use data-driven algorithms to guide treatment decisions. In the context of UCB transplantation, CDSS can suggest the best donor matches, calculate the required dosage of stem cells, and offer personalized post-transplant care recommendations.

V. REAL-TIME DECISION MAKING IN UCB THERAPY

The ability to make timely decisions is particularly important in critical care situations like stem cell transplants. EMR and EHR systems facilitate real-time decision-making through:

a. Instant Access to Data:

These systems ensure that patient data—such as lab results, imaging reports, and treatment histories—are readily accessible. This immediate availability is crucial for healthcare professionals in determining the best course of action quickly.

b. Automated Alerts:

EHR systems can be configured to generate alerts for clinicians when certain parameters are met. For example, if a post-transplant patient exhibits early signs of GVHD, the system can alert the medical team, enabling prompt intervention.

c. Remote Monitoring:

EHRs also integrate with telemedicine technologies to enable remote patient monitoring, allowing healthcare providers to keep track of UCB transplant patients' recovery in real time. This is especially beneficial in reducing hospital readmissions and improving long-term outcomes.

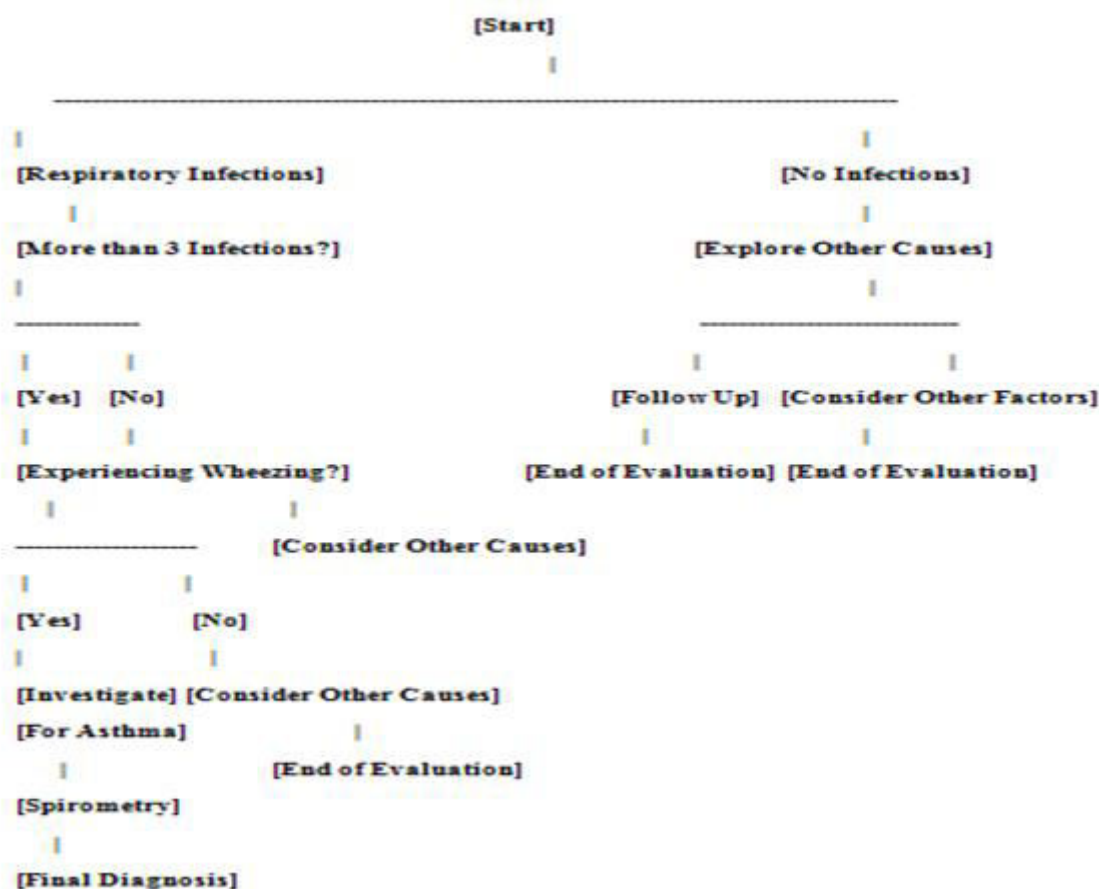
VI. ENHANCING PATIENT CARE THROUGH INTEROPERABILITY

One significant benefit of EHR systems is their ability to seamlessly connect multiple healthcare facilities. For patients undergoing UCB transplants, this is critical since they often require care across various institutions. EHR interoperability allows for the smooth exchange of patient records, reducing unnecessary delays and facilitating better coordination among the healthcare professionals involved in the transplant process. The ability to access and share comprehensive patient data enhances the continuity of care and ensures that all specialists are well-informed, leading to improved patient outcomes.

VII. THE ROLE OF PREDICTIVE ANALYTICS

EHR systems are further enhanced by integrating predictive analytics, offering valuable insights for clinicians managing UCB transplants. Predictive models can evaluate patterns in patient data to forecast possible complications, such as post-transplant rejection or infections. By identifying risks early, healthcare providers can develop personalized care plans and take preemptive actions to mitigate complications. This data-driven approach not only increases the accuracy of medical interventions but also contributes to better long-term results for transplant recipients.

VIII. DECISION TREE STRUCTURE FOR ASTHMA DIAGNOSIS



IX. CONCLUSION

The integration of EMR and EHR systems has fundamentally transformed the management of UCB transplantation. These systems offer improvements in donor-recipient matching, real-time clinical decisions, and comprehensive patient monitoring, all of which lead to enhanced patient outcomes. As healthcare technology continues to advance, the role of

EMR and EHR systems in UCB transplant protocols will only grow more critical. Their contributions in terms of accuracy, efficiency, and real-time data availability are essential to delivering effective, patient-centered care.

REFERENCES

1. Dr.V.Geetha and Dr.C K Gomathy, Anomaly Detection System in Credit Card Transaction Dataset, AIP Conference Proceedings,<https://doi.org/10.1063/5.0212564> Vol3028, Issue 01 2024
2. Dr.V.Geetha and Dr.C K Gomathy, Crime data analysis and prediction using machine learning, AIP Conference Proceedings,<https://doi.org/10.1063/5.0212566> Vol3028, Issue 01 2024
3. Dr.C K Gomathy and Dr.V.Geetha House price prediction using machine learning, AIP Conference Proceedings,<https://doi.org/10.1063/5.0212559> Vol3028, Issue 01 2024
4. Dr.V.Geetha and Dr.C K Gomathy, Identification of birds species using deep learning, AIP Conference Proceedings,<https://doi.org/10.1063/5.0212968> Vol3028, Issue 01 2024
5. Dr.V.Geetha and Dr.C K Gomathy, Missing child recognition system using deep learning, AIP Conference Proceedings,<https://doi.org/10.1063/5.0212567> Vol3028, Issue 01 2024
6. Dr.V.Geetha and Dr.C K Gomathy, Price forecasting of agricultural commodities, AIP Conference Proceedings,) <https://doi.org/10.1063/5.0212568> Vol3028, Issue 01 2024
7. Dr.V.Geetha and Dr.C K Gomathy, The customer churn prediction using machine learning, AIP Conference Proceedings,<https://doi.org/10.1063/5.0212569> Vol 3028, Issue 01 2024
8. Dr.C K Gomathy and Dr.V.Geetha, Fall detection for elderly people using machine learning, AIP Conference Proceedings,<https://doi.org/10.1063/5.0212561> Vol3028, Issue 01 2024
9. Dr.C K Gomathy and Dr.V.Geetha, Fall Navigation and obstacle detection for blind, AIP Conference Proceedings,<https://doi.org/10.1063/5.0212560> Vol3028, Issue 01 2024
10. Dr.V.Geetha and Dr.C K Gomathy, Securing medical image based on improved ElGamal encryption technique, AIP Conference Proceedings,) <https://doi.org/10.1063/5.0212570> Vol3028, Issue 01 2024
11. Dr.C K Gomathy and Dr.V.Geetha, Software error estimation using machine learning algorithms, AIP Conference Proceedings,<https://doi.org/10.1063/5.0212562> Vol3028, Issue 01 2024
12. Dr.V.Geetha and Dr.C K Gomathy, Web scraping using robotic process automation, AIP Conference Proceedings,) <https://doi.org/10.1063/5.0212571> Vol3028, Issue 01 2024
13. Dr.C K Gomathy and Dr.V.Geetha, Crypto sharing DAAP, AIP Conference Proceedings,<https://doi.org/10.1063/5.0212563> Vol3028, Issue 01 2024
14. Dr.V.Geetha and Dr.C K Gomathy, Company employee profile using QR code, AIP Conference Proceedings,) <https://doi.org/10.1063/5.0212572> Vol3028, Issue 01 2024
15. Dr.V.Geetha and Dr.C K Gomathy, Unified platform for advertising with predictive analysis, AIP Conference Proceedings,) <https://doi.org/10.1063/5.0212573> Vol3028, Issue 01 2024
16. Gomathy, C.K., Geetha, V., Lakshman, G., Bharadwaj, K. (2024). A Blockchain Model to Uplift Solvency by Creating Credit Proof. In: Mandal, J.K., Jana, B., Lu, T.C., De, D. (eds) Proceedings of International Conference on Network Security and Blockchain Technology. ICNSBT 2023. Lecture Notes in Networks and Systems, vol 738. Springer, Singapore. https://doi.org/10.1007/978-981-99-4433-0_39
17. CK.Gomathy, MangantiDhanush, SikharamSaiPushkar, V.Geetha, Helmet Detection and Number Plate Recognition using YOLOv3 in Real-Time 3rd International Conference on Innovative Mechanisms for Industry Applications (ICIMIA 2023) DVD Part Number: CFP23K58-DVD; ISBN: 979-8-3503-4362-5, DOI:10.1109/ICIMIA60377.2023.10425838, 979-8-3503-4363-2/23/\$31.00 ©2023 IEEE
18. Dr.V.Geetha and Dr.C K Gomathy, Cloud Network Management System, International Journal of Early Childhood Special Education (INT-JECSE) DOI:10.9756/INTJECSE/V14I5.69 ISSN: 1308-5581 Vol 14, Issue 05 2022
19. Dr.C K Gomathy and Dr.V.Geetha, Fake Job Forecast Using Data Mining Techniques, International Journal of Early Childhood Special Education (INT-JECSE) DOI:10.9756/INTJECSE/V14I5.70 ISSN: 1308-5581 Vol 14, Issue 05 2022
20. Dr.V.Geetha and Dr.C K Gomathy, Cyber Attack Detection System, International Journal of Early Childhood Special Education (INT-JECSE) DOI:10.9756/INTJECSE/V14I5.71 ISSN: 1308-5581 Vol 14, Issue 05 2022
21. Dr.V.Geetha and Dr.C K Gomathy, Attendance Monitoring System Using Opencv, International Journal of Early Childhood Special Education (INT-JECSE) DOI:DOI:10.9756/INTJECSE/V14I5.68 ISSN: 1308-5581 Vol 14, Issue 05 2022
22. Dr.C K Gomathy and Dr.V.Geetha, The Vehicle Service Management System, International Journal of Early Childhood Special Education (INT-JECSE) DOI:10.9756/INTJECSE/V14I5.66 ISSN: 1308-5581 Vol 14, Issue 05 2022

23. Dr. C. K. Gomathy and Dr. V. Geetha, Multi-Source Medical Data Integration And Mining For Healthcare Services, International Journal of Early Childhood Special Education (INT-JECSE) DOI: DOI:10.9756/INTJECSE/V14I5.67 ISSN: 1308-5581 Vol 14, Issue 05 2022
24. Dr. V. Geetha and Dr. C. K. Gomathy, An Efficient Way To Predict The Disease Using Machine Learning, International Journal of Early Childhood Special Education (INT-JECSE) DOI: DOI:10.9756/INTJECSE/V14I5.98 ISSN: 1308-5581 Vol 14, Issue 05 2022
25. Dr. C. K. Gomathy and Dr. V. Geetha, Music Classification Management System, International Journal of Early Childhood Special Education (INT-JECSE) DOI: DOI:10.9756/INTJECSE/V14I5.72 ISSN: 1308-5581 Vol 14, Issue 05 2022
26. Dr. C. K. Gomathy, Dr. V. Geetha, G. S. V. P. Praneetha, M. Sahithisucharitha. (2022). Medicine Identification Using OpenCv. Journal of Pharmaceutical Negative Results, 3718–3723. <https://doi.org/10.47750/pnr.2022.13.S09.457>
27. Dr. V. Geetha, Dr. C. K. Gomathy, Kommuru Keerthi, Nallamsetty Pavithra. (2022). Diagnostic Approach To Anemia In Adults Using Machine Learning. Journal of Pharmaceutical Negative Results, 3713–3717. <https://doi.org/10.47750/pnr.2022.13.S09.456>
28. Dr. C. K. Gomathy, " A Cloud Monitoring Framework Perform in Web Services, International Journal of Scientific Research in Computer Science, Engineering and Information Technology (IJSRCSEIT), ISSN : 2456-3307, Volume 3, Issue 5, pp.71-76, May-June-2018.
29. Dr. C. K. Gomathy, " Supply Chain - Impact of Importance and Technology in Software Release Management, International Journal of Scientific Research in Computer Science, Engineering and Information Technology (IJSRCSEIT), ISSN : 2456-3307, Volume 3, Issue 6, pp.01-04, July-August-2018.
30. Dr. C. K. Gomathy, Dr. V. Geetha, Peddireddy Abhiram, "The Innovative Application for News Management System," International Journal of Computer Trends and Technology, vol. 68, no. 7, pp. 56-62, 2020. Crossref, <https://doi.org/10.14445/22312803/IJCTT-V68I7P109>
31. Dr. C. K. Gomathy, " A Semantic Quality of Web Service Information Retrieval Techniques Using Bin Rank, International Journal of Scientific Research in Computer Science, Engineering and Information Technology (IJSRCSEIT), ISSN : 2456-3307, Volume 3, Issue 1, pp.1568-1573, January-February-2018.
32. Gomathy, C. K., et al. "A Location Based Value Prediction for Quality of Web Service." International Journal of Advanced Engineering Research and Science, vol. 3, no. 4, Apr. 2016.



INTERNATIONAL
STANDARD
SERIAL
NUMBER
INDIA



INTERNATIONAL JOURNAL OF INNOVATIVE RESEARCH

IN SCIENCE | ENGINEERING | TECHNOLOGY

 9940 572 462  6381 907 438  ijirset@gmail.com



www.ijirset.com

Scan to save the contact details