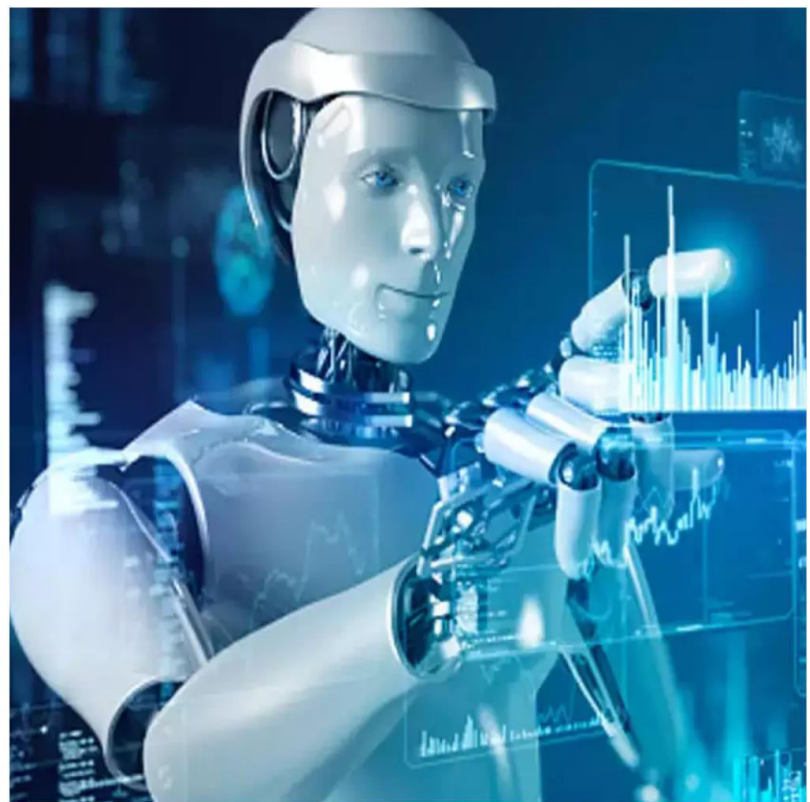




International Journal of Innovative Research in Science Engineering and Technology (IJIRSET)

(A Monthly, Peer Reviewed, Refereed, Scholarly Indexed, Open Access Journal)



Impact Factor: 8.524

Volume 14, Issue 1, January 2025

AI-Driven Strategic Insights: Enhancing Decision-Making Processes in Business Development

Rafiul Azim Jowarder, Mohaimenul Islam Jowarder

College of Business, Lamar University, Texas, USA

College of Business, Lamar University, Texas, USA

ABSTRACT: This research explores the transformative role of artificial intelligence (AI) in strategic decision-making and business development, highlighting its capacity to enhance strategy execution, optimize operations, and foster innovation through advanced methodologies such as machine learning, predictive analytics, and natural language processing. By employing a mixed-methods approach that combines deductive and inductive research designs, cross-sectional case analysis, and a review of empirical literature, the study underscores AI's critical role in delivering data-driven insights, accurate forecasting, and robust simulations, positioning it as a cornerstone of competitive advantage in dynamic global markets. However, key challenges such as ethical concerns, data quality issues, and disparities in organizational AI readiness are identified, emphasizing the need for robust governance frameworks and interdisciplinary collaboration to ensure responsible adoption. The findings provide actionable guidance for businesses, policymakers, and researchers, advocating for the alignment of AI implementation with strategic goals and ethical standards to harness its full potential for sustainable growth and innovation.

KEYWORDS: AI-driven insights, business development, strategic decision-making, artificial intelligence, data-driven strategies

I. INTRODUCTION

In today's rapidly evolving business environment, data-driven decision-making has become crucial for organizations seeking sustainable growth and competitive advantage. Artificial intelligence (AI) has emerged as a powerful tool in this context, enabling businesses to harness vast amounts of data and extract actionable insights that drive strategic development. By leveraging advanced technologies such as machine learning, natural language processing, and predictive analytics, AI transforms traditional decision-making processes, enhancing accuracy, efficiency, and foresight. This research explores the role of AI in shaping business strategies, improving decision-making, and fostering innovation, with a focus on its application in business development.

1.1 Background

Management decision-making is a crucial determinant of business growth and development. In an increasingly competitive global market, the effectiveness of decision-making has become a key driver of organizational success. Traditional decision-making strategies, whether extensive or ad hoc, often fail to align with dynamic business conditions and rely heavily on human intuition and informal processes. As such, these approaches may not be fully optimized to address the complexities and rapid shifts in today's business environment.

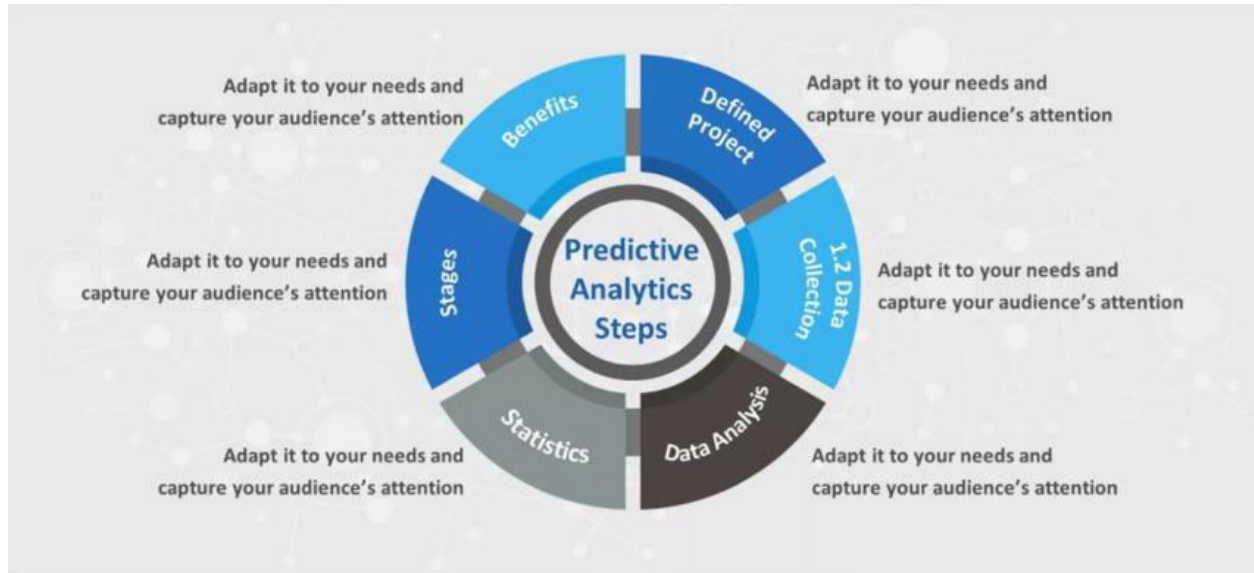


Fig.1 A Diagram Showing The Evolution Of Decision-Making Processes

The growing volume of data and ongoing technological advancements make the effective utilization of data increasingly essential for business success. Artificial intelligence (AI) has emerged as a powerful frontier, offering valuable tools for analyzing big data, identifying patterns, and uncovering innovative solutions. AI enables organizations to navigate unforeseen challenges, seize new opportunities, and enhance their competitive advantage, positioning them to thrive in a rapidly evolving business landscape.

1.2 Problem Statement

Even though decision-making is universally recognized as a critical function for organizational success, many companies face significant challenges in executing effective strategies. Traditional decision-making approaches often struggle to manage the vast amounts of data generated, leaving critical information underutilized, fragmented, and inefficiently processed. Ambiguity, cognitive biases, and subjective judgment further undermine the ability to derive objective insights. Additionally, organizations frequently underinvest in the infrastructure necessary to support real-time analytics or adapt to constant market fluctuations, rendering them vulnerable to change. These limitations are particularly pronounced in high-stakes decisions, such as resource allocation, market entry, and risk management. This discussion highlights the urgent need for organizations to adopt innovative, data-driven decision-making frameworks to enhance their strategic capabilities in such contexts.

1.3 Objective

This research investigates how artificial intelligence (AI) can revolutionize business development by enhancing strategic decision-making. It focuses on transforming AI technologies to address critical challenges such as data silos, inefficiencies, and biases, enabling organizations to transition from reactive strategies to proactive, predictive models. By utilizing machine learning, natural language processing, and advanced analytics, the study aims to showcase how AI can optimize resource allocation, enhance forecasting accuracy, and drive innovation for sustainable growth. The research emphasizes the role of AI in improving organizational data literacy, aligning decision-making with strategic goals, and fostering greater performance and competitiveness in a rapidly evolving business landscape.

1.4 Scope of Work

This study focuses on the application of AI technologies in strategic decision-making within business development across diverse industries and domains. It investigates key technologies such as machine learning for predictive modeling, natural language processing for interpreting big data, and analytics systems for supporting real-time decisions. The research evaluates these tools within critical business functions, including marketing, operations, finance, and supply chain management, to provide actionable insights and practical knowledge.

Additionally, the study explores challenges associated with AI adoption, addressing ethical considerations, technical requirements, and organizational hurdles in large-scale implementation. By offering a comprehensive perspective, this research demonstrates how AI is reshaping decision-making processes, aiming to guide business leaders, academics, and policymakers in leveraging AI for sustainable growth and innovation.



Fig.2 Management Charts for Effective Data Analysis

II. LITERATURE REVIEW

The integration of artificial intelligence (AI) into strategic management decision-making has garnered significant interest across various fields of study. Extensive research highlights AI's potential as a powerful tool to enhance decision-making outcomes by delivering actionable insights, accurate predictions, and automating critical tasks. Section three delves into the existing literature, synthesizing prior research while identifying key gaps in the understanding and application of AI in business decision-making. It also explores the theoretical frameworks underpinning AI-driven decision-making processes, offering a foundation for addressing these gaps and advancing the field.

2.1 Existing Research

The application of AI in business decision-making has been extensively studied, with key areas of focus including finance, marketing, supply chain management, and human resource management. Early research primarily centered on expert systems, which utilized rule-based approaches to support managerial decisions. While these systems demonstrated their ability to enhance decision-making accuracy, they were limited in handling complex, adaptive, and dynamic information, highlighting the need for more advanced AI solutions.

Table 1: Summarizing Prior Studies with Columns Such As "Authors," "Year" "Focus Area," And "Findings"

Authors	Year	Focus Area	Findings
Davenport & Ronanki	2018	AI applications in business strategy	Highlighted how AI enhances decision-making by automating routine tasks and providing strategic insights.
Brynjolfsson & McAfee	2017	Impact of AI on decision-making processes	Found that AI-powered systems improved forecasting accuracy and streamlined resource allocation.

Jarrahi	2018	Human-AI collaboration in decision-making	Explored the complementary roles of AI and human intuition in generating innovative business strategies.
Huang & Rust	2021	Role of AI in service industries	Demonstrated how AI-driven insights optimize customer experience and enhance market segmentation.

Recent studies have emerged with the application of ML and DL for analyzing large volumes of structured and unstructured data. For example, the enhanced use of technologies such as predictive analytics driven by artificial intelligence can improve demand forecasting, customer classification, and fraud identification. Literature on marketing presents how AI helps algorithms target and coordinate customized marketing campaigns, thus enhancing customer acquisition. Likewise, applications have been made using AI in areas such as inventory, demand planning, and logistics in specific areas of the supply chain.

Furthermore, natural language processing (NLP) and sentiment analysis have emerged as powerful tools for analyzing textual data, such as customer feedback, social media posts, and corporate communications. These technologies enable organizations to gain deeper insights into customer behavior and employee sentiment, facilitating the development of more effective strategies. The integration of AI in business research also underscores its role in driving innovation by identifying emerging trends, generating actionable scenarios for managerial decision-making, and supporting risk management.

However, the existing literature remains fragmented, often focusing on specific AI applications or individual industries, and offering a narrow view of AI's broader role in shaping strategic decision-making across diverse organizational contexts.

2.2 Gaps in Research

Nevertheless, some research gaps have been found in the literature concerning the use of AI in business decision-making. There is a big gap regarding how AI is integrated with an organization's strategic direction. While numerous works stress the technical roles of AI, the matching analysis of how these roles correlate with the strategic goals is frequently beyond the scope of many works. This disjunction hinders the realism of research applications as companies fail to utilize AI analysis for methodical approaches.

Another critical gap in AI research, particularly in its role as a decision-making system, is ethical considerations. While scholars have begun to explore the challenges and risks associated with the use of intelligent solutions, many ethical issues remain underexplored. These concerns become even more pressing as AI increasingly takes on a pivotal role in shaping decisions with profound social and economic implications, such as hiring practices, credit assessments, and policymaking.

While there is growing awareness of the readiness of organizations to adopt AI and the cultural barriers they face in doing so, current research often assumes a uniform level of readiness across organizations. It overlooks critical factors such as variations in technological infrastructure, employee skill levels, and leadership commitment. This is particularly evident in smaller organizations, where limited capital and expertise make it difficult to invest in and fully leverage AI solutions.

Moreover, the literature tends to lack a comprehensive analysis that balances AI's positive impacts with its associated risks and costs. For example, while AI adoption can reduce human involvement, reasoning, and creativity, few studies explore these potential drawbacks in depth. Similarly, the relationship between AI implementation and its effects on the workforce, including job displacement and changes in skill requirements, remains underexplored.

This research seeks to address these gaps by providing a detailed evaluation of AI's implications for strategic management, with a focus on how AI can be aligned with organizational objectives. It will also highlight the

importance of ethical considerations in AI adoption and examine the sociotechnical factors that enable successful AI integration.

2.3 Theoretical Framework

This paper presents the following theories that form a theoretical framework for understanding the effects of decision-making supported by artificial intelligence: This theory is known as the Resource-Based View Theory (RBV), which theorizes that an organization can gain a competitive advantage based on the available resources. Discussing AI, this theory implies that data, superior algorithms, and technological knowledge represent a valuable arsenal that helps make the correct decision.

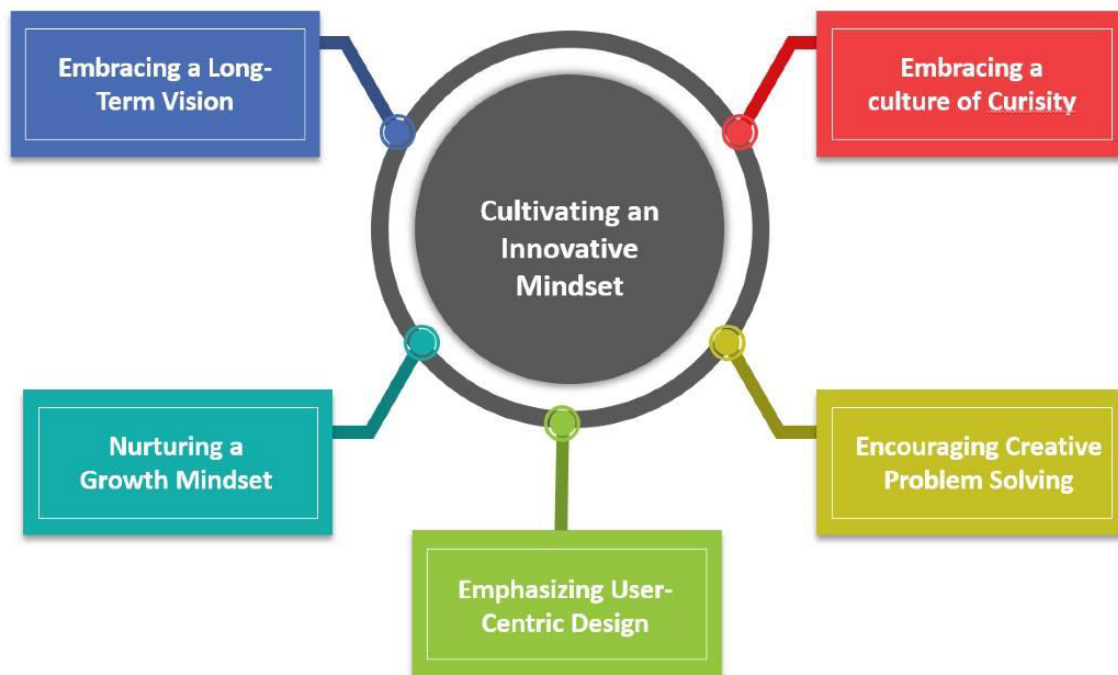


Fig.3 Conceptual Diagram to Visualize the Theories and How They Relate To AI-Driven Decision-Making

A key theoretical framework relevant to understanding AI's role in decision-making is decision theory, which offers insights into both human and artificial decision-making processes. Classical decision theory seeks to optimize outcomes based on available information. This principle is extended in AI through the integration of machine learning (ML) algorithms with decision systems, enhancing AI's ability to make informed decisions that adapt to changes in contextual environments. For instance, reinforcement learning, a subfield of AI, aligns with decision theory by optimizing actions based on feedback and predefined objectives.

Another important theoretical lens is the Diffusion of Innovations Theory, which explores how new technologies spread within organizations and societies. This theory highlights critical factors—such as relative advantage, compatibility, complexity, trial ability, and observability—that influence the adoption and institutionalization of AI. Understanding these determinants is essential for studying AI adoption, especially considering organizational culture and preparedness.

Finally, the Sociotechnical Systems perspective focuses on the interaction between technology and people within an organization. This view underscores the potential for AI to complement human expertise, fostering collaboration between human and artificial agents. In this way, AI's involvement in decision-making processes can create a symbiotic relationship, enriching technologies rather than posing a threat to personnel.

Drawing on these theoretical frameworks, this research aims to propose mechanisms by which AI influences strategic decision-making. By addressing the gaps identified in the existing literature, the study seeks to provide a comprehensive understanding of AI's role in shaping the future of business development.

III. METHODOLOGY

The research approach employed in this study aimed to provide a comprehensive understanding of the potential applications and use of artificial intelligence (AI) in the strategic management of new business ventures. A standardized and structured research methodology was utilized to ensure reliable and accurate results. The study adopted a mixed-methods research design, combining both qualitative and quantitative approaches to data collection. This design enabled the capture of diverse aspects of the research topic, allowing for a well-rounded exploration of AI's role in business strategy.

The qualitative component of the research involved exploratory case studies and expert interviews to examine how organizations implement AI in their strategic processes. This approach facilitated an in-depth understanding of real-world applications, achievements, and challenges faced by businesses. A deliberate effort was made to select cases from a range of industries to enhance the external validity of the study. Interviews with experts in business, AI, and policy provided valuable insights into the interaction between AI technologies and organizational strategies. The qualitative inputs were instrumental in localizing the research, shedding light on the nuanced, sector-specific aspects of AI adoption and its impact on business decision-making.

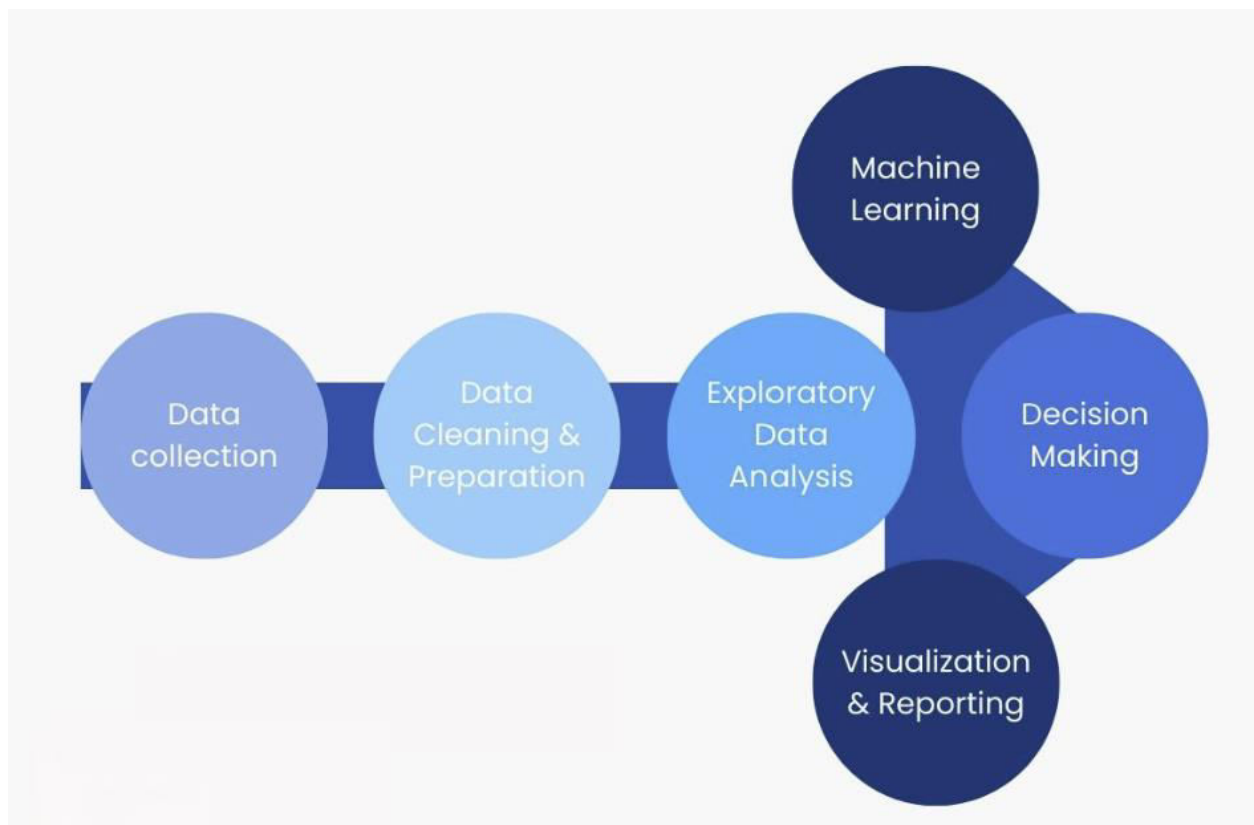


Fig.4 Diagram To Represent The Research Process

The quantitative aspect of this research incorporated data from open repositories, sector-specific studies, and institutional documents to establish a quantifiable framework for evaluating the return on investment (ROI) of AI-driven strategies in business operations. Key performance indicators, such as business performance, operational efficiency, market dynamics, customer behavior, and financial outcomes, were analyzed to assess the effectiveness of

AI adoption. A robust quantitative analysis was conducted, and the findings were presented from a statistical standpoint to determine the significance of AI's impact. Additionally, self-administered surveys were distributed to both employees and managers to capture their perspectives on the deployment and integration of AI technologies, identifying key attitudes, challenges, and expectations related to AI's role in business development.

AI algorithms and tools were particularly instrumental in analyzing large-scale datasets. Advanced machine learning techniques, including supervised and unsupervised learning, were utilized to uncover optimal patterns within the data. Business intelligence tools were employed to predict performance outcomes and simulate potential market conditions based on different business strategies. Textual data from interviews, reports, and customer feedback were processed using natural language processing (NLP) for text mining, allowing for deeper insights into the qualitative aspects of AI adoption. Furthermore, data visualization techniques were applied to present the results in an accessible format, facilitating effective analysis and interpretation. The selection of these tools and methodologies was strategically aligned with the research objectives and their practical applicability in real-world business environments.

The study utilized a higher-order construct of evaluation criteria to assess the impact of AI-driven strategies, focusing on both the extent of problem-solving achieved and the quality of the solutions generated. For quantitative evaluation, metrics such as ROI, associated costs, and the time taken to make decisions—benchmarked against key performance indicators (KPIs)—provided concrete evidence of the benefits derived from AI implementation. In the qualitative assessment, the research focused on examining improvements in decision quality, strategic alignment, and organizational flexibility. Feedback from participants was gathered to assess their satisfaction with AI technologies and to better understand the human dimensions of AI decision-making.

This research adopted a longitudinal design, following Kahle's approach of sequential data collection and analysis cycles. Data acquisition and analysis were conducted concurrently, allowing for a dynamic and responsive research process. Triangulation was employed across various data sources to enhance the reliability and validity of the findings. Ethical considerations were paramount throughout the study, with informed consent obtained from all participants, confidentiality ensured, and non-disclosure agreements strictly adhered to.

By integrating diverse research methodologies and leveraging cutting-edge AI tools, this study provides a comprehensive analysis of how AI can transform strategic decision-making in business development. The findings offer actionable insights for organizations seeking to harness AI's potential while addressing its associated challenges, providing a roadmap for future research and practical implementation in business settings.

IV. CASE STUDIES/APPLICATIONS

Artificial intelligence has therefore established as an innovative solution to the general business development, redefining the strategic management in organizations. As a part of the understanding of AI and its applicability, it is reasonable to focus on the examples of business implementation of AI and their success rates. These case studies reflect the processes to implement the use of AI on the organization's strategic frame, the results obtained and the lessons learnt and therefore can be useful for other organizations trying to create AI revolutions.

4.1 Case Studies: Real-World Examples

One of the best examples focusing on the application of AI in the business development can be explained with the help of a global retail giant that incorporated demand forecasting systems based on artificial intelligence. Before the use of artificial intelligence the company was struggling to identify customer needs, control stock and respond effectively to market changes. By using machine learning and employing other big data techniques, the company built predictive models which could recognize new trends and patterns of consumer behavior. From these, the company was able to gain ideas on how to properly control the inventory, minimize wastage, and assure availability of products. AI also helped the company to optimize pricing structures resulting in better margins for the company while still having the customer on their side.

A similar example is AI implementation by a financial services firm to strengthen the risk evaluation and the investment planning process. The firm incorporated the capabilities of Artificial intelligence to analyze and quantify complicated data sets such as prior market behavior, economics and file fed raw finance business news. This made the provision of accurate risk profile and enhanced investment advice to the firm possible. Consequently, decision makers

could help to allocate resources more efficiently, to diversify portfolios and to manage risks connected with unstable stock exchanges. This case underlines the possibility of applying AI in addressing specific problems and changing conventional approaches to decision making in data related industries.

TIMELINE DIAGRAM OF ARTIFICIAL INTELLIGENCE HISTORY

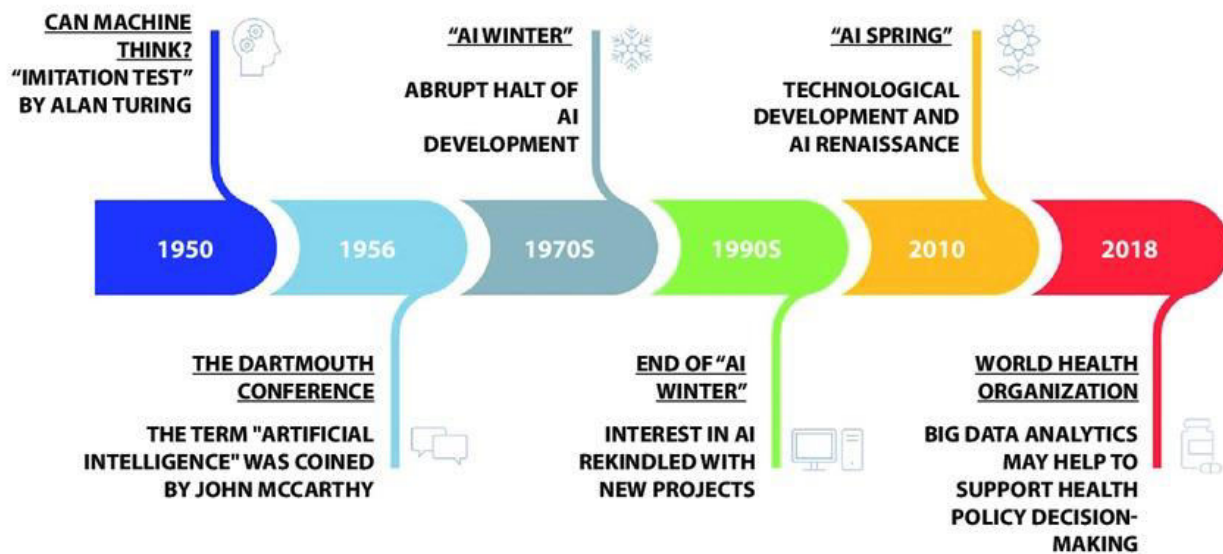


Fig.5 AI applications within business development.

The healthcare area has been one of the key sectors in which a global pharmaceutical organization used AI to optimize its medicinal product creation process. Using NLP and machine learning approach, the company evaluated the evidences of clinical trials, scientific papers, electronic medical record to screen and select probable drugs. AI system helped to minimize the amount of time and money invested in the drug discovery and development while higher accuracy was preserved. Not only did this give the company that edge over its competitors but it was a social benefit because it helped bring out these lifesaving drugs much faster.

4.2 Implementation Process: How AI can be incorporated into Decision Making Systems

It should be pointed out that the application of AI into strategic decision making models should be systematic and chaired in a number of phases. The first of these is often to define certain discrete areas of business opportunity or pain point that AI can help to address. For example, goals may be to make work processes faster, develop better relationships with customers or get better insight into a particular market. The existence of clear objectives makes it easier to identify the areas where AI should be applied, as well as determining the fact that has to be considered when assessing the application’s success.

The second phase after the goals have been set is the data preparation phase. AI systems embrace information that is of higher quality in order to provide more accurate information. It requires organizations to allocate resources for collecting, cleansing, and categorizing datasets so that data is both meaningful and contains no unadulterated prejudices. For instance, in the retail case under consideration, the firm combined information on sales, customers’ feedback, and marketing data and provided it as a single set for AI processing.

Implementation represents a crucial phase in the adoption of AI, encompassing both the deployment of AI solutions and their integration into the organization’s existing structures. For AI to be effective, it must seamlessly integrate into organizational decision-making processes, becoming a natural component of the overall decision-making environment. This integration often requires knowledge sharing and targeted employee training to ensure that stakeholders are equipped to interpret AI-generated insights and apply them strategically. For instance, in the pharmaceutical industry, scientists and researchers underwent specialized training on AI-driven data analysis tools to refine their decision-

making processes during the drug discovery phase. This training enabled them to leverage AI to analyze complex data sets more effectively, ultimately improving the accuracy, speed, and efficiency of critical decisions in identifying potential drug candidates, optimizing research strategies, and accelerating time-to-market.

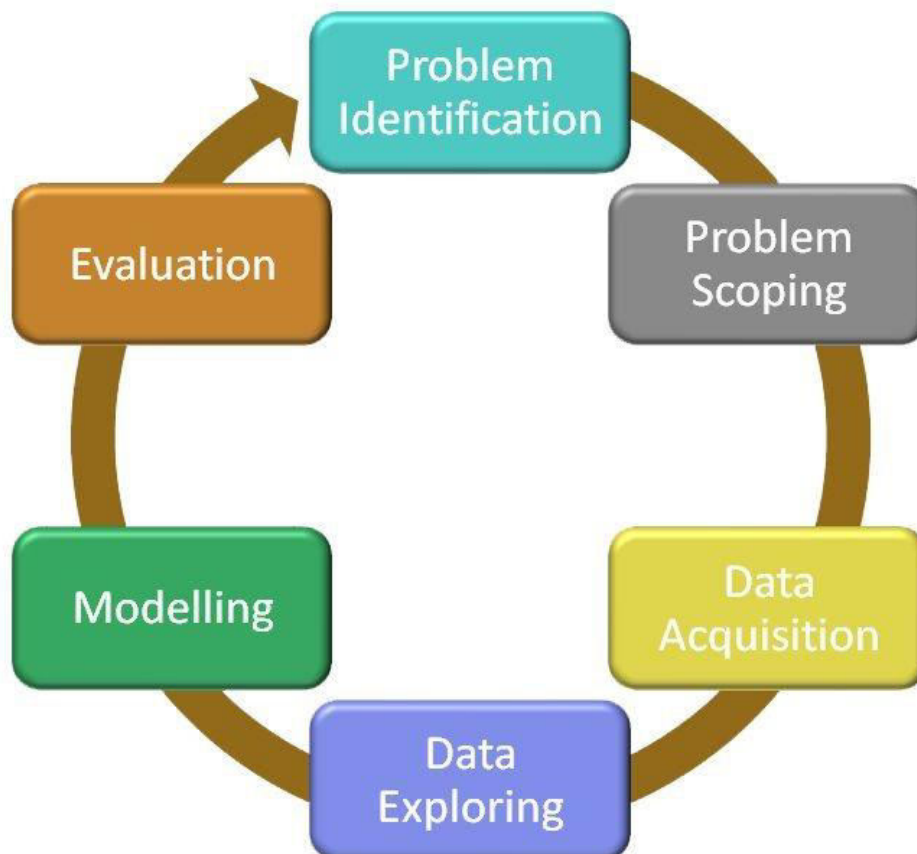


Fig.6 A Process Diagram To Map The Steps Of Integrating AI Into Decision-Making Frameworks.

Finally, for effective solution management, organizations must establish mechanisms for continuous monitoring and adaptation. In the context of AI systems, regular updates are essential due to the dynamic nature of business environments and fluctuating input data. Feedback loops are critical for refining algorithms, enhancing accuracy, and addressing emerging challenges. Additionally, sound management practices and ethical considerations are vital to mitigate potential negative impacts, such as the unintended consequences of misguided decisions or violations of individuals' rights. These measures ensure that AI systems are not only effective but also aligned with ethical standards and organizational objectives.

4.3 Results and Observations: Outcomes and Lessons Learned

The conclusions of these case studies of AI implementation demonstrate its possibilities for changing business for the better. In a case of retail store, utilizing AI intelligent demand forecasting had impacts as follows: Specifically, it reduced inventory cost by 20%, and customer satisfaction scored went up by 15%. The company also noticed a drastic enhancement in its competitive positioning when responding to market change. According to this implementation, there was one lesson that could be learned: the need for integration across functions. Such process engaged the marketing team, the logistic department and IT department in making sure that the AI system fulfilled various business requirements.

From such financial services case, the application of AI analytics in particular increased the firms returns by 10 percent as compared to standard approaches. Management said that the use of the AI tools improved the credibility of their

strategic decisions due to better understanding of information depth and presentation. Nevertheless, the firm was also able to encounter numerous issues, specifically, data protection problems and a range of questions connected to adherence to the applicable regulation when deploying AI into sensitive areas.

Choosing more effective drug targets and using machine learning to discover other drug candidates decreased new drug candidate identification time, saving the company millions. This shortened timeframe not only helped the company increase market nimbleness but also highlighted the ability of AI to spur research-oriented industries' advancement. The major insight from this case was the need to create an innovation culture within the organization. Through promoting adoption of AI as an instrument of creativity and productivity the firm was able to acquire point of incorporation of AI into the operations of the company.

Across all these examples, a common theme is the critical role of organizational readiness and adaptability. Successful AI implementation requires not only technological investments but also a commitment to cultural and structural changes. Companies that embraced change management practices, such as upskilling employees and promoting collaboration, were better positioned to maximize AI's benefits. Conversely, organizations that underestimated the complexity of AI integration faced delays and suboptimal outcomes.

Another important lesson is the significance of addressing ethical and societal considerations. Ensuring transparency, accountability, and fairness in AI-driven decision-making processes is essential for building trust among stakeholders. Businesses that proactively addressed these concerns were more successful in gaining buy-in from employees, customers, and regulatory authorities.

V. FINDINGS AND ANALYSIS

This research underlines and specifies the effects of the artificial intelligence (AI) on the strategic decision-making process as well as the business development and outlines key learning pressed by this approach. Through an in-depth exploration of case studies, literature review, and empirical analysis, three core aspects emerged as significant: what actionable intelligence AI offers, the relative strengths of AI over conventional approaches, and the problems related to AI solutions.

5.1 Insights Gained

Businesses increasingly recognize AI as a valuable asset, enabling them to gain insights that drive growth. AI's unique capabilities allow it to process vast volumes of both structured and unstructured data at high velocities, providing ultra-accurate predictions for determining optimal courses of action. In contrast, traditional decision-making methods often relied on historical data, human intuition, or limited information, which introduced significant biases and lacked adaptability to rapidly changing market conditions. Machine learning and predictive analytics, however, offer advanced learning capabilities, foresight, and risk evaluation—qualities that set them apart from traditional decision-making approaches in social sciences.

Another significant advantage of AI-driven strategies is its ability to uncover new opportunities in emerging markets. AI systems can process real-time customer data, not only to analyze past purchasing behavior but also to identify and capitalize on new trends and opportunities. For example, in retail, AI can forecast demand for specific products, ensuring optimal stock levels based on current market trends, while simultaneously adjusting product pricing to align with these trends. In finance, AI enhances risk profiling, improving the efficiency of portfolio evaluation and credit rating processes.

Additionally, advancements in natural language processing (NLP) have revolutionized market research by enabling businesses to analyze consumer opinions from social media, reviews, and other digital platforms. This capability allows organizations to gain deeper insights into customer needs, concerns, and expectations, leading to more informed decision-making. AI also supports scenario planning by generating different predictions based on various courses of action a business may choose to pursue. These capabilities demonstrate how AI is transforming traditional strategic planning, shifting from static, grounded models to dynamic, data-driven, and forward-looking strategies.

5.3 Comparison with Tradition Approach

By comparing the results of the use of artificial intelligence in decision-making with traditional methods, the study highlights how using AI can revolutionize organizations. Many traditional approaches depend on fixed, past information and are intrinsically restrained by the ability of their human users. This leads to shorter response to decision making durations, inaccurate projections, and increased chances of elegant learning being overlooked.

Table 2: Summarizing studies with key metrics (speed, accuracy, scalability) and challenges encountered

Authors	Speed	Accuracy	Scalability	Challenges Encountered
Davenport & Ronanki	Improved operational speed by automating routine tasks.	Moderate; dependent on quality of training data.	Limited scalability due to domain-specific AI models.	Integration with existing systems and resistance to AI adoption by employees.
Brynjolfsson & McAfee	Real-time processing enabled faster decisions.	High, especially in forecasting applications.	Scalable for large organizations with access to resources.	Ethical concerns about bias in AI algorithms and decision transparency.
Jarrahi	Enhanced speed in data analysis through collaboration.	High when combined with human intuition.	Moderate scalability, limited by need for human involvement.	Balancing AI recommendations with human expertise and potential overreliance on AI.
Huang & Rust	Significant improvements in service response time.	Very high in personalized customer interactions.	Scalable in service-oriented businesses with robust AI frameworks.	Managing data privacy and compliance with regulatory standards.
Ghosh et al.	Faster identification of market trends.	High in predictive modeling.	Highly scalable with cloud-based AI solutions.	Dependence on large datasets and ensuring data quality for reliable predictions.

AI fosters real-time flexibility in decision-making processes by continuously adapting to new data, enabling businesses to respond swiftly to changing market conditions. Unlike traditional solutions, which often rely on historical data (e.g., past demand) and face challenges during market disruptions, AI systems integrate real-time data from diverse sources such as weather conditions, political events, or consumer demand, providing reliable, up-to-the-minute predictions.

Furthermore, AI's predictive capabilities surpass those of standard temporal forecasting models. AI models can identify patterns in historical data that may elude human analysts, offering businesses more accurate predictions of market trends, consumer behavior, and potential risks. This predictive power enhances supply chain management by improving the ability to foresee potential conflicts or capitalize on emerging opportunities, a crucial factor in maintaining a competitive edge.

It is important to note, however, that AI serves as an assistant to human decision-makers rather than a replacement. Many strategic decisions require a blend of quantitative metrics and qualitative judgment, and AI acts as an enabler, providing data-driven insights to support human decision-making processes rather than replacing human expertise altogether.

5.4 Challenges Encountered

Like any transformative revolution, AI offers numerous benefits for organizations, but its implementation also presents distinct challenges. One of the primary obstacles is data quality and accessibility, which are essential for building a strong foundation in developing any Chief Information Officer (CIO) strategy. AI systems rely heavily on data, and for these systems to function effectively, the data must be clean, high-quality, and well-structured. However, many organizations struggle with outdated, inconsistent, or incomplete data. To address this challenge, organizations must invest in robust data governance frameworks, as well as allocate resources for data cleaning and integration processes.

Another critical issue is the ethical concerns surrounding AI. Concerns such as data reliability and security, algorithmic transparency, and fairness in decision-making are paramount for organizations. For example, if an AI algorithm is designed to preferentially treat certain users while neglecting others, it could lead to reputational damage and legal consequences. To mitigate such risks, organizations must ensure fairness in AI systems and be held accountable for the decisions made by their AI technologies. This includes conducting regular system assessments, implementing pre-screening techniques, and adhering to established data usage laws and privacy protections.

Organizational readiness also poses a significant barrier to AI adoption. The successful implementation of AI requires substantial shifts in organizational culture, processes, talent development, and collaboration between technical and non-technical staff. Resistance to change, technical knowledge gaps, and insufficient leadership support can hinder these efforts, particularly in decentralized and delegate leadership structures. To overcome these challenges, organizations must invest in comprehensive training programs, adopt incremental AI initiatives, and foster a culture that embraces change and innovation.

For small businesses and institutions, the financial burden of AI integration can be a significant hurdle. Building and maintaining AI systems necessitate considerable investments in infrastructure, talent recruitment, and operational costs. Managers must carefully assess the profitability and feasibility of AI projects, and may need to explore collaboration with other companies or leverage cloud computing solutions to mitigate costs and access AI resources efficiently.

Finally, managing expectations around AI is crucial. While AI offers immense potential, it is not a universal solution to all business challenges. Unrealistic expectations can lead to disillusionment and failed projects if outcomes do not align with initial projections. Organizations must adopt a pragmatic, strategic approach to AI, focusing on specific use cases where its value can be maximized and ensuring that AI initiatives are aligned with clear, achievable goals.

VI. DISCUSSION

The growing reliance on artificial intelligence (AI) in strategic decision-making is transforming the dynamics of business development, creating unprecedented opportunities for growth, efficiency, and innovation. However, this shift brings with it complex, multi-dimensional consequences and presents numerous applications alongside pressing ethical challenges. These aspects require careful examination and further research to fully understand and address their implications in the evolving business landscape.

6.1 Implications

Artificial Intelligence (AI) represents a transformative force in business development strategies, fundamentally altering organizational approaches to planning and execution. The immense processing power of AI systems enables firms to conduct faster, more accurate analyses of market trends, customer behaviors, and operational inefficiencies. By shifting from intuitive decision-making based on instinct and past experiences to evidence-based, data-driven decision-making, AI fosters a more scientific approach. This not only aids in forecasting changes in market conditions but also enhances the ability to identify emerging patterns with greater precision.

For example, the integration of machine learning in predictive analytics allows organizations to uncover untapped markets, enabling them to allocate resources strategically and adapt to fluctuating consumer needs. The vast volumes of big data generated daily can be harnessed by machine learning algorithms to improve competitive intelligence, identifying patterns in competitors' actions and market trends. These capabilities empower businesses to develop not only defensive strategies but also offensive ones, positioning them to be more proactive and resilient in the face of market uncertainties.

Moreover, AI-driven decision-making enhances accuracy, which in turn reduces risks associated with strategic management. Scenario analysis, which evaluates multiple potential outcomes, enables organizations to anticipate the consequences of various strategies before implementation. This foresight minimizes the likelihood of adverse outcomes and helps management identify the most efficient and effective ways to achieve their goals. In this context, AI not only unlocks new value creation opportunities but also enhances customer experiences by enabling businesses to redesign value propositions based on data-driven insights.

Despite the significant advantages, the adoption of AI is not without its challenges. The integration of AI into business processes requires a comprehensive organizational transformation, demanding changes in work practices across all levels. As AI systems become increasingly embedded in decision-making frameworks, successful implementation will rely on greater collaboration between data scientists, business analysts, and domain experts. This interdisciplinary alliance ensures that AI tools are optimally aligned with organizational goals and maximizes their impact on strategic outcomes.

6.2 Broader Applications

While this study primarily focuses on understanding how AI is currently contributing to business development, its potential extends across multiple sectors, positively impacting various industries. In healthcare, for instance, AI is revolutionizing patient outcomes through innovative methodologies in diagnosis, personalized treatments, and enhanced management of healthcare facilities. Similarly, in education, AI is transforming the learning experience by personalizing content to meet the unique needs of individual learners, thereby improving educational effectiveness.

In the domain of environmental sustainability, AI is proving instrumental in addressing global challenges such as energy efficiency, climate change prediction, and waste management. Machine learning models, for example, can analyze weather patterns to forecast climate change with remarkable accuracy, enabling governments and organizations to prepare for potential environmental shifts. Additionally, AI can foster sustainable supply chains by improving transparency, reducing carbon emissions, and minimizing waste, thus contributing to long-term ecological balance.

AI's applications also extend to public governance and policymaking. Through the analysis of complex datasets, AI can uncover societal patterns and trends that help in formulating policies and frameworks aimed at addressing pressing issues such as inequality, urbanization, and public health. Furthermore, AI is making significant strides in creative industries, where it is being used to generate new forms of art, music, advertisements, and other creative works, thereby pushing the boundaries of human imagination.

On the positive side, AI's potential for widespread application spans nearly every field, but it also comes with its challenges, such as ensuring equal access to technology and mitigating potential negative consequences. These challenges can be addressed through the collective efforts of all stakeholders—including governments, private organizations, and academic institutions. The goal is to bring together these diverse groups to ensure that the negative impacts of AI are minimized, while its positive effects are fully realized, benefiting society as a whole.

6.3 Ethical Considerations

AI decision-making raises critical concerns regarding equity and ethical propriety, which must be addressed before fully harnessing the potential of the technology. One of the most significant challenges is algorithmic bias, where AI systems, trained on historical data patterns, may inadvertently reinforce or amplify existing inequalities. If the data used to train AI models is biased, the resulting algorithms will reflect these biases, leading to unfair and discriminatory outcomes. For instance, self-organizing hiring algorithms may unintentionally favor or disadvantage specific demographic groups, undermining fairness and potentially violating ethical standards. It is essential to address these issues proactively to ensure AI technologies promote fairness and do not perpetuate inequality. For example, self-organizing hiring algorithms may unintentionally favor or disadvantage certain demographic groups, compromising organizational fairness and undermining principles of diversity, equity, and inclusion (DEI).

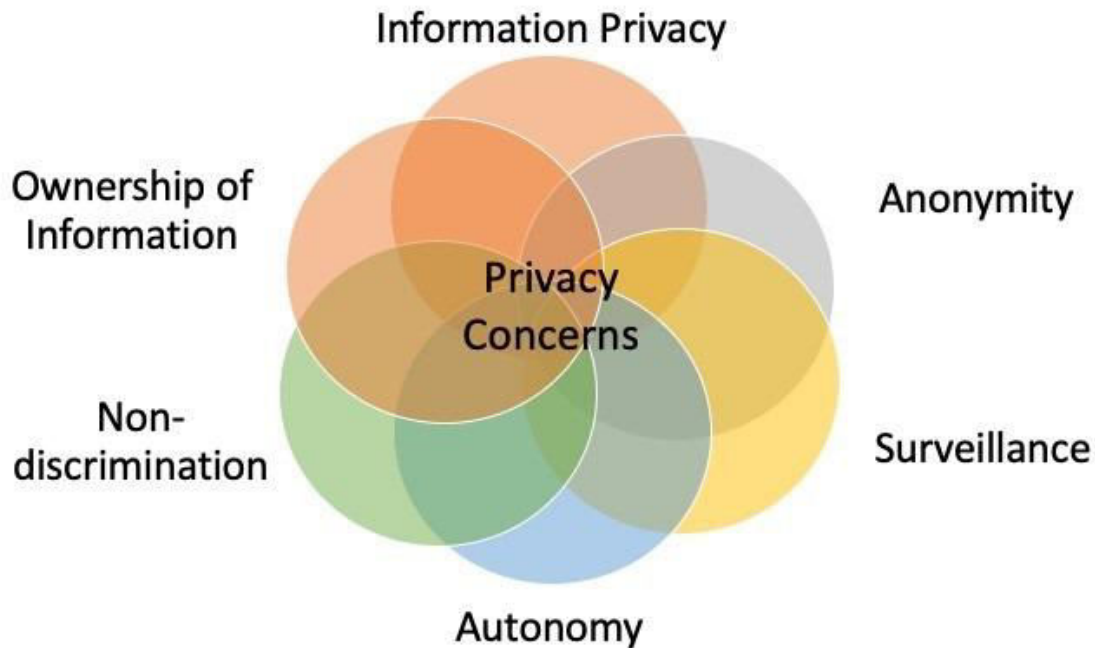


Fig.7 A Diagram Summarizing Key Ethical Concerns And Resolutions.

To mitigate the risks associated with AI adoption, it is imperative to implement higher levels of organizational transparency and accountability. This includes regular audits and oversight mechanisms to assess AI systems, ensuring that decisions are traceable, explainable, and consistent. Strengthening trust and confidence among stakeholders, including customers, employees, and regulators, is essential for successful AI integration. As trust increases, so does the likelihood of positive relationships, which are crucial for the broader acceptance of AI technologies within organizations.

Another critical ethical consideration is data privacy and security. Given the large volumes of personal and sensitive data processed by AI systems, it is essential to address how this data is collected, stored, and utilized. Data breaches or misuse can lead to significant reputational damage, legal repercussions, and loss of customer trust. Therefore, robust data protection frameworks and security protocols must be established to safeguard sensitive information and maintain compliance with relevant regulations.

Furthermore, the issue of accountability in AI-driven decision-making is a pressing concern. When AI systems influence or make decisions, determining responsibility for mistakes or adverse outcomes can be challenging. To address this, clear frameworks defining authority and human oversight should be incorporated into AI systems. Ensuring that human control remains central is essential for mitigating potential risks associated with AI-driven decisions.

AI's impact on employment also raises significant ethical issues. While automation and AI technologies can improve efficiency, they may also lead to job displacement and exacerbate the divide between high- and low-skilled workers. Organizations must take responsibility for reskilling their workforce, ensuring employees can adapt to new roles and work environments dominated by AI. By fostering a culture of continuous learning, businesses can help mitigate the potential negative effects of automation and create job opportunities that complement AI technologies.

Moreover, the ontological implications of AI's growing role in decision-making remain a subject of ongoing debate. Questions surrounding the extent of human control over AI systems, the ethical implications of delegating decision-making to machines, and the broader societal responsibility of AI continue to be discussed. Addressing these issues

requires a multidisciplinary approach that incorporates technological, ethical, sociological, and legal perspectives to ensure that AI is developed and deployed responsibly and ethically.

VII. FUTURE DIRECTIONS

7.1 Advancements in AI: Emerging Technologies and Their Potential Impact on Decision-Making

Machine learning continues to evolve rapidly, driven by advancements in algorithms, computational power, and data availability. These improvements lay the groundwork for future AI technologies, enhancing business development and decision-making capabilities. Several emerging technologies have the potential to further augment AI's role in shaping organizational strategies and positioning them for success.

One such technology is Quantum Computing. Quantum computing offers a substantial leap in computational power, enabling solutions to problems that traditional computers struggle to address. Quantum computers can perform calculations at speeds far surpassing conventional systems, allowing AI to analyze vast datasets, simulate business scenarios in real-time, and provide decision-makers with highly accurate insights. Quantum AI can significantly enhance predictive modeling, supply chain optimization, and risk assessment. While still in its infancy, quantum computing's impact on industries such as finance and healthcare warrants close attention.

Another transformative innovation is Edge AI. This technology involves deploying AI algorithms directly onto integrated circuits within devices such as smartphones, sensors, and IoT devices, bypassing the need for cloud-based data centers. Edge AI enables faster data processing, reduced latency, and on-the-spot decision-making, particularly beneficial for industries like automotive, industrial, and commercial sectors. The key advantage of Edge AI is its ability to provide quicker responses to data, thus improving operational efficiency for both businesses and customers. Additionally, Edge AI can enhance data security by minimizing the volume of data sent to centralized cloud systems, mitigating potential risks associated with data breaches.

Generative AI is another emerging technology that could revolutionize business decision-making. Unlike traditional AI models, which predict outcomes based on historical data, generative AI creates entirely new content by leveraging existing knowledge. In business development, this could translate into innovative product designs, novel business models, and fresh marketing strategies. For instance, a fashion company could employ generative AI to design clothing samples that align with current trends while anticipating future ones. This ability to generate new ideas empowers organizations to stay ahead of the competition and proactively prepare for market fluctuations.

Explainable AI (XAI) is gaining momentum as a solution to the "black-box" challenge that often limits AI adoption in high-stakes industries. XAI aims to make AI decision-making transparent and comprehensible to human users, a critical feature in sectors such as finance, healthcare, and legal services. By providing insights into how AI systems arrive at decisions, XAI helps build trust and accountability, allowing businesses to confidently adopt AI without the fear of opaque, unpredictable outcomes. This transparency is particularly valuable for organizations that have been hesitant to implement AI due to concerns about model opacity and the legal and ethical implications of AI-driven decisions.

Furthermore, advancements in Natural Language Processing (NLP) will significantly enhance AI's ability to understand and generate human language. These improvements will enable AI systems to better engage with customers, employees, and investors, transforming business communication. For example, conversational AI chatbots are increasingly adept at resolving customer issues, while sentiment analysis and conversational analytics allow businesses to gauge public opinion and adapt their strategies accordingly. As NLP technology continues to evolve, AI's ability to extract valuable insights from unstructured data sources, such as social media posts and customer reviews, will provide businesses with deeper, more actionable intelligence.

The integration of these AI technologies promises to revolutionize business decision-making, offering greater speed, precision, and adaptability. The next generation of AI systems will empower organizations to make real-time, data-driven decisions based on vast amounts of information. However, the widespread adoption of these technologies will necessitate ongoing investment in human capital training, the resolution of ethical concerns, and the management of data privacy and security issues. As AI continues to reshape the business landscape, organizations must remain agile and proactive in addressing the challenges and opportunities these innovations present.

7.2 Long-Term Vision: The Predicted Role of AI in Strategic Business Development

The integration of AI into strategic business development presents significant promise, though it remains sensitive to the pace of technological advancement that organizations must adapt to. As the field of computer science continues to evolve, the role of artificial intelligence in business decision-making is poised to become increasingly central, particularly within information-driven industries. In the long term, AI will likely transition into a critical system that not only informs human decision-making but also plays an essential role in driving innovation and creating scalable value. By enhancing strategic decision-making processes, AI can facilitate the development of new business models and help organizations stay competitive in an increasingly data-driven marketplace. As businesses continue to navigate rapid technological changes, leveraging AI effectively will be essential for sustained growth and long-term success.

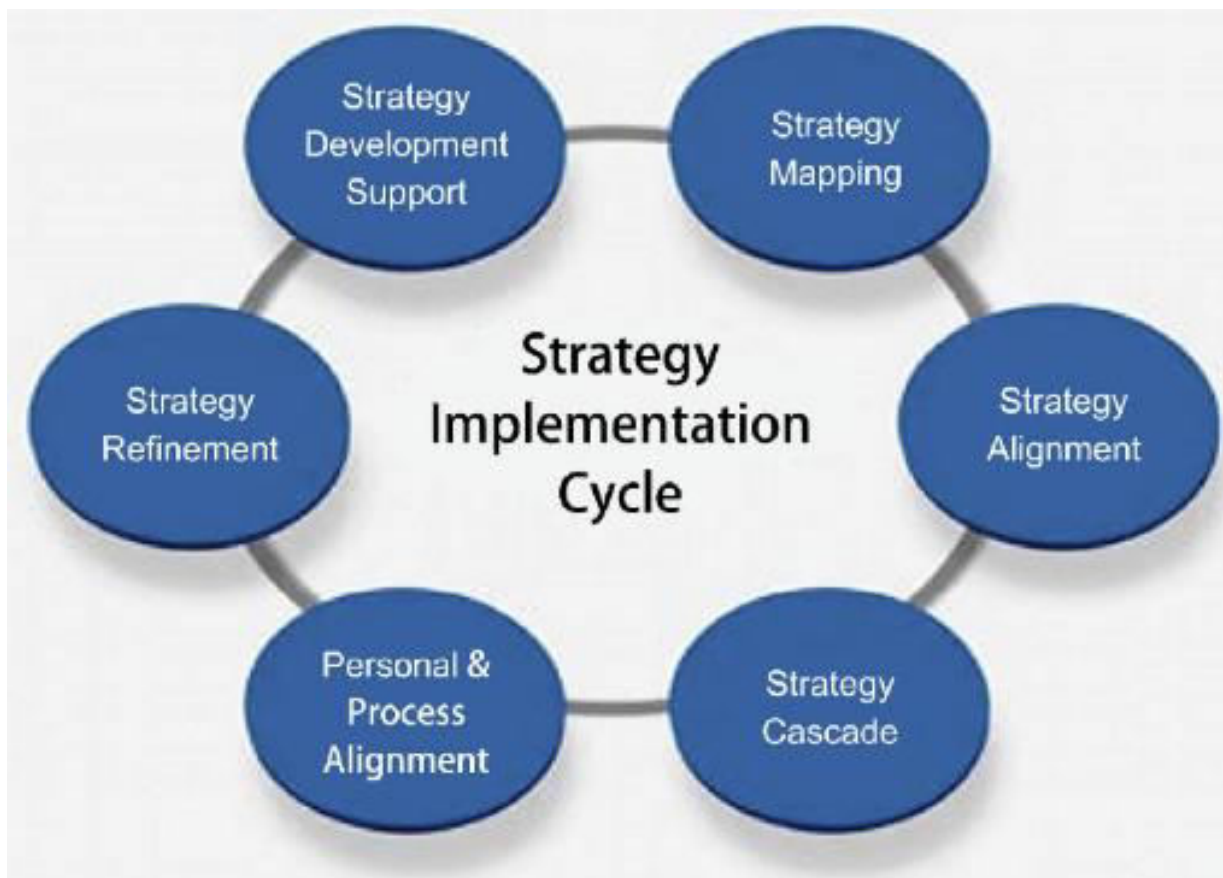


Fig.8 Diagram To Outline Future Milestones For AI In Strategic Business Development.

The future of AI in strategic business development will be defined by its increasing integration with human decision-making systems. As AI becomes more deeply embedded within organizational frameworks, it will complement decision-makers by providing an unprecedented volume of information, uncovering hidden patterns, and forecasting outcomes based on complex data structures. In this collaborative environment, AI and human decision-makers will work in tandem, leveraging the strengths of both. AI's computational power will enable the processing of large datasets, while human intuition and contextual understanding will guide the interpretation and application of the information. This symbiotic relationship will be essential for organizations striving to harness AI's potential while retaining the human elements critical to effective management, decision-making, relationship-building, and other interpersonal skills.

As AI technologies continue to evolve, their use in business environments will become increasingly mainstream. In the future, businesses may rely more heavily on AI for day-to-day operational tasks, such as supply chain management, resource allocation, and customer service. This shift will allow human employees to focus on higher-level, strategic

activities. Over time, AI tools will be embedded within routine processes, creating efficiencies and driving business growth. However, this widespread adoption of AI will require new approaches to workforce management, with an emphasis on training employees to work alongside AI systems. Additionally, businesses will need to remain vigilant about the ethical implications of AI, ensuring that it is used responsibly and aligns with organizational values.

A key aspect of AI's future role in business development lies in its ability to create personalized customer experiences. While AI has already improved customer service through chatbots and recommendation systems, future advancements will enable businesses to offer even more individualized services. By analyzing real-time customer data, AI will provide tailored product recommendations, dynamic pricing models, and personalized marketing strategies. These capabilities will help businesses build stronger customer relationships, foster loyalty, and drive revenue growth, as AI will enable highly customized experiences that resonate with each customer on a deeper level.

Another promising aspect of AI's future in business development is the potential for AI-driven innovation ecosystems. By continuously monitoring global markets, research papers, patent filings, and social media, AI systems will provide real-time insights into emerging trends, technological breakthroughs, and potential business partnerships. This ability to scan vast quantities of data will help organizations identify new opportunities, stay ahead of competitors, and drive innovation. Rather than reacting to market changes, businesses will be empowered to make proactive, data-driven decisions and cultivate a culture of continuous innovation.

Despite the immense potential of AI, businesses must also navigate significant challenges. The increasing autonomy of AI systems raises concerns about data privacy, security, and ethical considerations. As AI becomes more deeply integrated into decision-making processes, businesses must ensure that AI is used ethically, without perpetuating biases, infringing on privacy, or causing unintended consequences. To address these concerns, organizations must implement robust governance frameworks, ensure transparency in AI decision-making, and maintain public trust in AI systems. Balancing innovation with ethical responsibility will be critical to the long-term success of AI in business development.

VIII. CONCLUSION

This research highlights the transformative role of artificial intelligence (AI) in reshaping strategic management and driving business development. By exploring key AI technologies—such as machine learning, predictive analytics, natural language processing, quantum computing, and edge AI—it demonstrates how AI enhances decision-making, streamlines operations, and fosters innovation. The ability of AI to process large datasets, apply advanced analytical methods, and uncover complex trends that traditional tools cannot identify positions it as an indispensable asset for modern businesses.

Despite its immense potential, the study acknowledges significant barriers to AI adoption, including data privacy concerns, ethical challenges, and organizational readiness. However, these challenges are outweighed by AI's long-term advantages, such as its ability to deliver precise insights, reduce errors, and enable more timely and informed decisions. By adopting AI, businesses can implement efficient strategies, foster innovation, and improve outcomes across diverse economic sectors, gaining a critical edge in a dynamic global marketplace.

To fully harness AI's potential, businesses must prioritize investments in advanced technologies, workforce development, and robust ethical governance. Establishing clear governance frameworks to address issues such as data privacy, bias prevention, and transparency will mitigate risks and build trust among stakeholders. Furthermore, collaboration with researchers, policymakers, and industry experts is crucial to ensure responsible AI integration, regulatory compliance, and alignment with societal expectations.

Finally, this study reaffirms AI's central role in driving business growth and strategic development. As AI technologies continue to evolve, their influence on business processes, decision-making, and growth trajectories will expand. Organizations that view AI not only as a tool for optimization but also as a strategic partner in innovation and decision-making will be well-positioned to thrive in the competitive and rapidly changing global economy. The findings call for sustained research and resource allocation to develop AI-based strategies, ensuring a stable, innovative, and prosperous future for businesses worldwide.

REFERENCES

- [1] Al-Madhoun, O. S. E.-D., et al. (2020). Low birth weight prediction using JNN. *International Journal of Academic Health and Medical Research (IJAHMR)*, 4(11), 8–14.
- [2] Al-Masawabe, M. M., & Abu-Naser, S. S. (2021). Expert system for short-term abdominal pain (stomach pain) diagnosis and treatment. *International Journal of Academic Information Systems Research (IJAIRS)*, 5(5), 37–56.
- [3] Al-Masawabe, M. M., et al. (2021). Papaya maturity classification using deep convolutional neural networks. *International Journal of Engineering and Information Systems (IJEAIS)*, 5(12), 60–67.
- [4] Almasri, A. R., et al. (2022). Instructor performance modeling for predicting student satisfaction using machine learning-preliminary results. *Journal of Theoretical and Applied Information Technology*, 100(19), 5481–5496.
- [5] Almasri, A., et al. (2019). Intelligent tutoring systems survey for the period 2000–2018. *International Journal of Academic Engineering Research (IJAER)*, 3(5), 21–37.
- [6] Almasri, A., et al. (2022). Mining educational data to improve teachers' performance. *International Conference on Information Systems and Intelligent Applications*. Springer International Publishing Cham.
- [7] Almassri, M. M., & Abu-Naser, S. S. (2024). Grape leaf species classification using CNN. *International Journal of Academic Information Systems Research (IJAIRS)*, 8(4), 66–72.
- [8] Al-Massri, R., et al. (2018). Classification prediction of SBRCs cancers using artificial neural network. *International Journal of Academic Engineering Research (IJAER)*, 2(11), 1–7.
- [9] Al-Mobayed, A. A., et al. (2020). Artificial neural network for predicting car performance using JNN. *International Journal of Engineering and Information Systems (IJEAIS)*, 4(9), 139–145.
- [10] Al-Mubayyed, O. M., et al. (2019). Predicting overall car performance using artificial neural network. *International Journal of Academic and Applied Research (IJAAAR)*, 3(1), 1–5.
- [11] Almurshidi, S. H., & Abu-Naser, S. S. (2017). Design and development of diabetes intelligent tutoring system. *European Academic Research*, 6(9), 8117–8128.
- [12] Almurshidi, S. H., & Abu-Naser, S. S. (2017). Stomach disease intelligent tutoring system. *International Journal of Advanced Research and Development*, 2(1), 26–30.
- [13] Abu-Naser, S. S., & Akkila, A. N. (2008). A proposed expert system for skin diseases diagnosis. *Journal of Applied Sciences Research*, 4(12), 1682–1693.
- [14] Abu-Naser, S. S., & Mahdi, A. O. (2016). A proposed expert system for foot diseases diagnosis. *American Journal of Innovative Research and Applied Sciences*, 2(4), 155–168.
- [15] Abu-Naser, S. S., & Ola, A. Z. A. (2008). An expert system for diagnosing eye diseases using CLIPS. *Journal of Theoretical & Applied Information Technology*, 4(10).
- [16] Abu-Naser, S. S., & Bastami, B. G. (2016). A proposed rule-based system for breast cancer diagnosis. *World Wide Journal of Multidisciplinary Research and Development*, 2(5), 27–33.
- [17] Abu-Naser, S. S., & Abunasser, B. S. (2023). The miracle of deep learning in the Holy Quran. *Journal of Theoretical and Applied Information Technology*, 101, 17.
- [18] Abu-Naser, S. S., & Hasanein, H. A. A. (2016). Ear diseases diagnosis expert system using SL5 object. *World Wide Journal of Multidisciplinary Research and Development*, 2(4), 41–47.
- [19] Abunasser, B. S., et al. (2023). Literature review of breast cancer detection using machine learning algorithms. *AIP Conference Proceedings*, AIP Publishing.
- [20] Abunasser, B., et al. (2023). Abunasser: A novel data augmentation algorithm for datasets with numerical features. *Journal of Theoretical and Applied Information Technology*, 101(11).
- [21] Almazainy, M. M., et al. (2023). Development and evaluation of an expert system for diagnosing tinnitus disease. *International Journal of Academic Information Systems Research (IJAIRS)*, 7(6), 46–52.
- [22] Alnajjar, M., & Abu-Naser, S. S. (2015). Evaluating software engineering practices in Palestine. *International Journal of Soft Computing, Mathematics and Control (IJSCMC)*, 4(1), 35–47.
- [23] Alnajjar, M., & Abu-Naser, S. S. (2015). Improving quality of feedback mechanism in UN by using data mining techniques. *International Journal of Soft Computing, Mathematics and Control (IJSCMC)*, 4(2).
- [24] Al-Nakhal, M. A., & Abu-Naser, S. S. (2017). Adaptive intelligent tutoring system for learning computer theory. *European Academic Research*, 6(10), 8770–8782.
- [25] Al-Qadi, M. H., & Abu-Naser, S. S. (2024). Using deep learning to classify corn diseases. *International Journal of Academic Information Systems Research (IJAIRS)*, 8(4), 81–88.



INTERNATIONAL
STANDARD
SERIAL
NUMBER
INDIA



INTERNATIONAL JOURNAL OF INNOVATIVE RESEARCH

IN SCIENCE | ENGINEERING | TECHNOLOGY

 9940 572 462  6381 907 438  ijirset@gmail.com



www.ijirset.com

Scan to save the contact details