



# International Journal of Innovative Research in Science Engineering and Technology (IJIRSET)

*(A Monthly, Peer Reviewed, Refereed, Scholarly Indexed, Open Access Journal)*



**Impact Factor: 8.524**

**Volume 14, Issue 1, January 2025**

# Modelling and Layout of Independent House using AutoCAD and 3D's Max Software

Nenavath Ganesh<sup>a</sup>, Nenavath Srinu<sup>b</sup>, Sumanth Nenavath<sup>c</sup>, Dr. A.Narender Reddy<sup>d</sup>

U.G. Students, Department of Civil Engineering, Guru Nanak Institutions Technical Campus, Ibrahimpatnam,  
Telangana, India<sup>abc</sup>

Professor, Department of Civil Engineering, Guru Nanak Institutions Technical Campus, Ibrahimpatnam,  
Telangana, India<sup>d</sup>

**ABSTRACT:** In this project, a Independent house is designed and visualized using 3ds Max for 3D modelling and rendering and AutoCAD for drafting. To ensure precise and correct representation of the independent house design, AutoCAD is first utilized to develop full floor plans, elevations, and structural layouts. The 2D designs are then transformed into realistic 3D models using 3ds Max, which adds textures, lighting, and materials to the visualization to create an authentic representation of the interior and exterior areas. The technical drawing capabilities of AutoCAD and the rendering capability of 3ds Max are combined to create realistic presentations and efficient design development, which aids in effectively communicating the design vision to stakeholders and clients.

**KEYWORDS:** 3d's Max, 3D visualization, architectural details

## I. INTRODUCTION

Autodesk 3dsMax, 3D Max, Is A Professional 3D Computer Graphics Program For Making 3D Models, And Images. It Is Developed And Produced By Autodesk Media And Entertainment.[2] It Has Modelling Capabilities And A Flexible Plug in Architecture And Must Be Used On The Microsoft Windows Platform. It Is Frequently Used By Studios, And Architectural Visualization Studios. It Is Also Used For Movie Effects And Movie Pre-Visualization. 3ds Max Features Shades (Such As Ambient Occlusion And Subsurface Scattering), Dynamic Simulation, Particle Systems, Radiosity, Normal Map Creation And Rendering, Global Illumination, A Customizable User Interface, And Its Own Scripting Language.

### 3ds Max Interface Overview

The 3ds Max Interface Comprises Controls, Status Information, And Viewports, Where You Work And View Your Scene.

One Of The Most Important Aspect Of Using 3ds Max Is Its Versatility. Many Program Functions Are Available From Multiple Interface Elements. For Example, You Can Open Track View For Animation Control From The Main Toolbar As Well As The Graph Editors Menu, But The Easiest Way To Get To A Specific Object's Track In Track View Is To Right-Click The Object And Then Choose Track View Selected From The Quad Menu.

You Can Customize The User Interface In A Variety Of Ways: By Adding Keyboard Shortcuts, Moving Toolbars And Command Panels Around, Creating New Toolbars And Buttons, And Even Recording Scripts Into Toolbar Buttons. The User Interface Is High DPI Aware, And Ensures That You Have The Optimal Experience With Your Display Hardware.

Note: Some Images Of The User Interface (Icons, Toolbars, Etc.) Found Within 3ds Max Help May Be Of Older Versions Of The Software.

1. User Account Menu
2. Workspace Selector
3. Menu Bar
4. Main Toolbar

5. Ribbon
6. Scene Explorer
7. Viewport Layouts
8. Command Panel
9. Viewports
10. Max script Mini Listener
11. Status Line And Prompt Line
12. Isolate Selection Toggle and Selection Lock Toggle
13. Coordinate Display
14. Animation And Time Controls
15. Viewport Navigation Controls
16. Projects Toolbar
17. Topics In This Section

#### Workspaces

The Workspaces Feature Lets You Switch Quickly Among Any Number Of Different Interface Setups. It Can Restore Custom Arrangements Of Toolbars, Menus, Viewport Layout Presets, And So On.

##### 1. Floating And Docking

You Can Easily Customize Your Workspace By Floating And Docking Part Of The Interface, Such As Panels, Windows, Menu, Toolbars, And The Time Slider.

##### 2. Special Controls

3ds Max Uses Some Special User Interface Controls, Which Are Described In This Topic.

##### 3. Additional Keyboard Commands

This Topic Describes Some Commands That Are Provided Only As Customizable Actions. You Can Assign Them To A Keyboard Shortcut, A Menu, Or A Button By Using The Customize User Interface Dialog.

##### 4. Toggling Dialogs

In Most Cases, You Can Close A Dialog With The Same Command Used To Open It. This Applies To Any Combination Of Input Methods, Including Menu, Toolbar Button, And Keyboard Shortcuts. For Example, You Can Open The Render Setup Dialog By Choosing Rendering Render Setup, And Then Close It By Pressing F10 (Default Keyboard Shortcut). If A Dialog Is Available From A Menu, A Check Mark Appears Next To The Respective Command While It's Open.

1. To Start 3ds Max From The Command Line
2. Search 3ds Max Commands
3. Lets You Search For Actions By Name.

## II. LITERATURE SURVEY

##### 1. Varalakshmi .V (2014)

This project designed a G+4 storey residential building's various components such as foundation, column, beam and slab. The loads, namely dead load and live load, were calculated in accordance with IS 875(Part I II) and HYSD bars, namely Fe415, were used in accordance with IS-1986 and IS- 1985. They came to the conclusion that the safety of a RCC is determined by the initial architectural and structural configuration of the entire structure, the quality of the structural , design, and reinforcement detailing of the building frame to achieve element stability and ductile performance.

##### 2. S. Harish and L. Ramaprasad Reddy (2017)

This paper was discussed briefly entire structure from top to bottom required paramete- rs of foundations, different types of columns different shapes of beams. The design of storage building are taken as different methods limit state

and working stress method based upon on the experimental results. Planning and designing are also used in various software like Auto Cad. In this case learned about particular thing is design in right track for calculation.

3. R.D. Deshpande (2017)

This project makes an attempt to view the construction working of varied elements in the multi-storied building. Designing and scheming and evaluation of multi-storied building has been done for G+2 building. According to material properties the loads are calculated is taken from code IS 875 part-II and piles are schemed based on protected bearing capacity of soil.

4. S. Mahesh and Dr. Panduranga Rao (2014)

This project gives the manual design has been done for one of the different dimensions of the footing, column, beam and slab of Residential Building as per IS:456-2000 and SP-16.

5. Prof. Aradhana Chavan ( June 2021)

Planning, Analysis, Design and Estimation of G+4 building using STAAD PRO and AUTOCAD This project includes G +4 building with parking at ground floor and rest of the floors occupied with 2BHK flats. The response of a RCC high rise building under dead load, live load and seismic load is studied as per IS 875(Part 1): 1987 and IS 875(Part 2): 1987.

6. Aafreen khan, shreyas shende (March 2023) Analysis and Design of Multistorey Hospital Building (G+4). This project includes G+4 Hospital building which is having with an area of 7000 sq.ft. For this building the used softwares to plan, analysis and design is AUTOCAD, 3D SOFTWARE and STAAD PRO respectively.

7. Madireddy Sathyanarayana, Eda Heema Shivani (March 2019) Design and Analysis of Independent house using CYPECAD Software. This project includes independent house is analyzed and design by using the software called CYPECAD. It also designed for natural forces such as earthquake and wind speed.

8. Jayesh, Harish, Rithik Patel (March 2023) Analysis and Design of a Residential Building (G+4) by using STAAD PRO. A review of analysis and design of (G+4) Residential Building using STAADPRO. In accordance with IS code 456-2000.

9. Rashmi agashe, Marshal Bagele, Vaishnavi Deshmukh, Sharad (april 2020) To study analysis and design of multistory building using STAAD pro and comparing with manual calculations. This project is generally based on theoretical design and analysis of structural framed building. Analysis and design of G+4 storey residential building structure by using IS code method all the drafting and detailing was done by using AUTOCAD & STAAD PRO.

10. Namaratha S. Patel, Vaishnavi N. Ghodake, Rucha & Yogesh (June 2022) Design and Modelling of commercial cum Residential Building by using AUTODEST, Revit & STAADPRO. This project includes commercial cum residential building as mixed building with ground floor consisting of commercial shops and remaining are floor of building consists of 2BHK flats and it is done by using software AUTOCAD, 3D Modelling & STAAD PRO. (IScode456-2000).

11. IS: 875 (Part 1) – 1987 for Dead Loads, Indian Standard Code Of Practice For Design Loads (Other Than Earthquake) For Buildings and Structures, All permanent constructions of the structure form the dead loads. The dead load comprises of the weights of walls, partitions floor finishes, false ceilings, false floors and the other permanent constructions in the buildings. The dead load loads may be calculated from the dimensions of various members and their unit weights. The unit weights of plain concrete and reinforced concrete made with sand and gravel or crushed natural stone aggregate may be taken as 24 KN/m<sup>3</sup> and 24 KN/m<sup>3</sup> respectively.

12. IS 456 -2000, Indian standard code of practice for plain and reinforced concrete (fourth revision), Bureau of Indian Standards. This standard deals with the general structural use of plain and reinforced concrete. For the purpose of this standard, plain concrete structures are those where reinforcement, if provided is ignored for the determination of strength of the structures.

13. SP: 16 -1980, Design Aids for Reinforced Concrete to IS: 456-1978 (third revision), Bureau of Indian Standard. This is the explanatory handbook which covers the basis/source of each clause. The objective of these design aids is to reduce design time in the use of certain clauses in the Code for the design of beams, slabs and column in general building structures. The charts and tables included in the design aids were used in calculation of footings and slabs.

Al-Kodmay et.al 2016[29] This paper explores the dual role of exterior bracing and diagrid systems in skyscraper design, emphasizing their structural efficiency and aesthetic potential. These systems reduce materials, enhance performance, and lower costs while serving as visually expressive elements that communicate structural logic and artistic creativity. By examining past, present, and future towers, the paper highlights how these structural systems can contribute to a building's urban identity through aesthetically pleasing and geometrically coherent designs. It synthesizes structural functionality with artistic expression, showcasing these systems as both practical and creative components in modern skyscraper architecture.

### III. METHODOLOGY

Gathering client requirements, site analysis, and initial layout sketching are the first steps in designing a Independent house with AutoCAD and 3ds Max. Create 2D floor designs for the first and ground floors using AutoCAD, making sure that all sections and elevations meet to local construction rules and specifications for dimensions and operation. After everything is finished, Import the designs to 3ds Max in order to create walls, floors, and roofs can be extruded and architectural features like stairs and home furnishings can be added to the 3D model. Use V-Ray to apply realistic materials and textures, adjust lighting and surroundings, and generate excellent graphics. Present the design for remarks and finalize 2D drawings and 3D visuals for construction and presentation.

Analyzing site specifics, architectural preferences, and any other design guidelines that affect the finished product are also included in this phase. AutoCAD, which is perfect for producing accurate 2D architecture drawings, is used to draft the layout in the following stage. Prior to creating complete floor plans for the ground and first levels, the procedure entails establishing the proper units and scales. These blueprints make sure every component is precisely dimensioned and include wall, door, window, staircase, and room layouts. To improve clarity, annotations like labels and measurements are added, and layers are utilized to arrange the drawing's various elements. For usage in the 3D modelling stage, the finished layout is subsequently saved as a.DWG file.

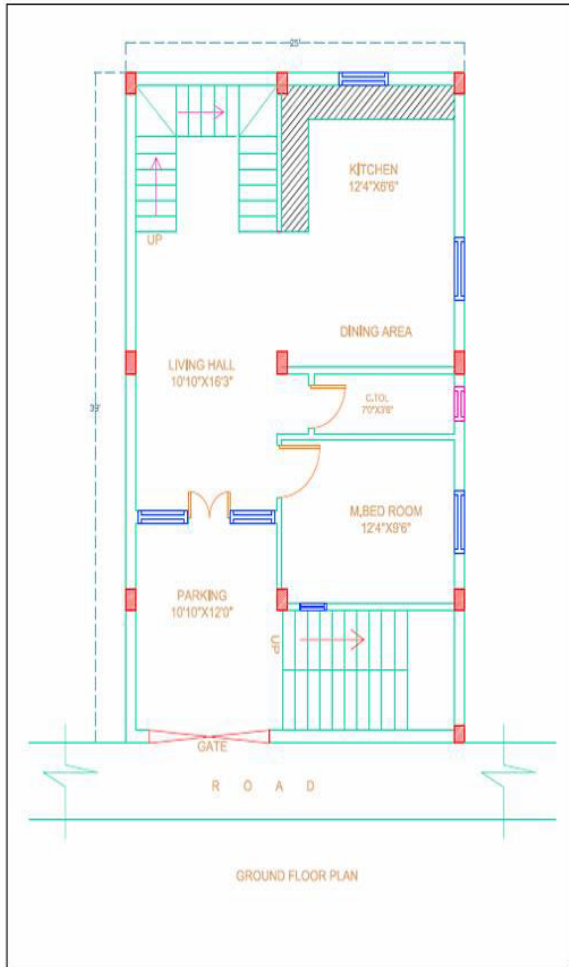
The 2D layout is imported into 3ds Max for 3D modelling after it is complete. The proper scale and orientation are carefully maintained while importing the DWG file into the software. Layer-based organization of imported data makes processing easier. Making walls and defining structural components like floors, ceilings, and staircases are the next steps in establishing the Independent house base geometry. Boolean operations are used to incorporate door and window openings, and architectural elements like columns and modelling are added to improve the Independent house appearance. Texturing and the application of materials are done after the 3D structure has been model. Using 3ds Max's Material Editor, realistic materials are applied to different villa components, and UV mapping is applied to ensure textures appear seamless. Because it adds depth and realism, lighting is a crucial component of this stage. Both artificial and natural lighting configurations are used, and sophisticated renderers like V-Ray or Arnold are frequently used to produce photorealistic results.

Rendering and visualization come next after the model and textures are ready. Key views of the villa's exterior and inside are captured by strategically placed cameras. The produced photos clearly display the villa's intricate design, and the render parameters are adjusted to guarantee high-quality output. To give a live view of the area, walkthroughs or animations can also be made if necessary Software such as Photoshop is used to post-process output photos. To improve the visual quality, brightness, contrast, and colour balance must be adjusted. Other effects like vegetation, sky, and ambient elements may be added to make the scene more lifelike.

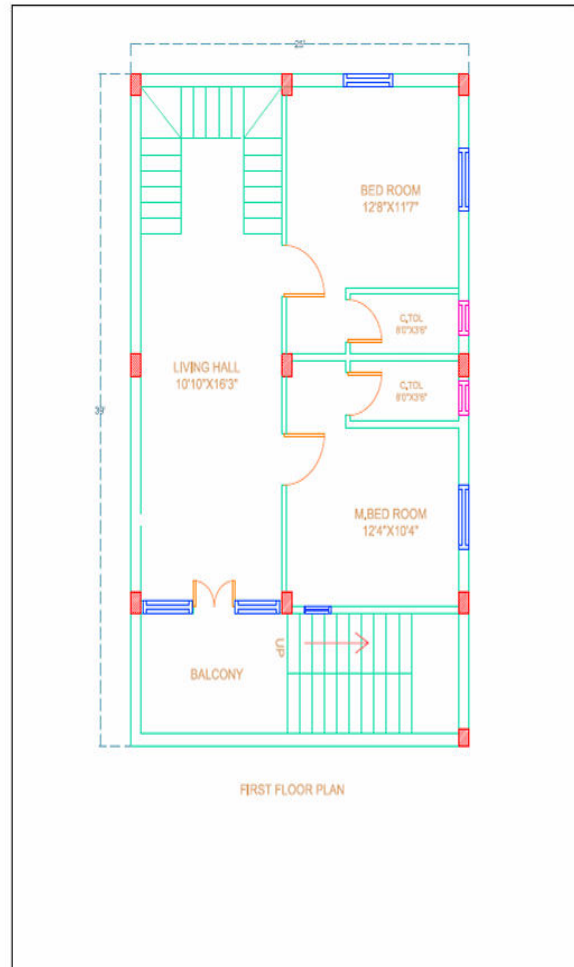
Lastly, the results are checked against the original requirements. After rendered images and walkthroughs are reviewed and shared with stake holders for advice. To make sure the finished design reflects the client's vision, any necessary changes are made in response to their feedback. High-resolution photos, animations, and 3D model files that are prepared for presentation or additional work are usually included in the deliverables. This thorough process ensures a precise and eye-catching representation of the independent house design.

IV. EXPERIMENTAL RESULTS

Figures shows the result of the layout of Independent house work outed in AutoCAD Software. First image show the ground floor plan of the Independent house, Second image shows the First Floor of the Independent house plan

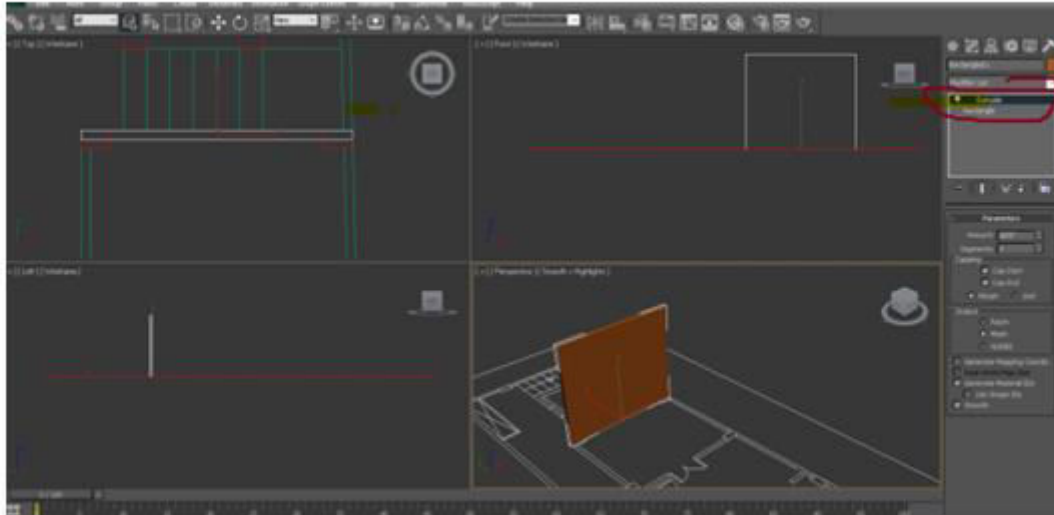


GROUND FLOOR PLAN

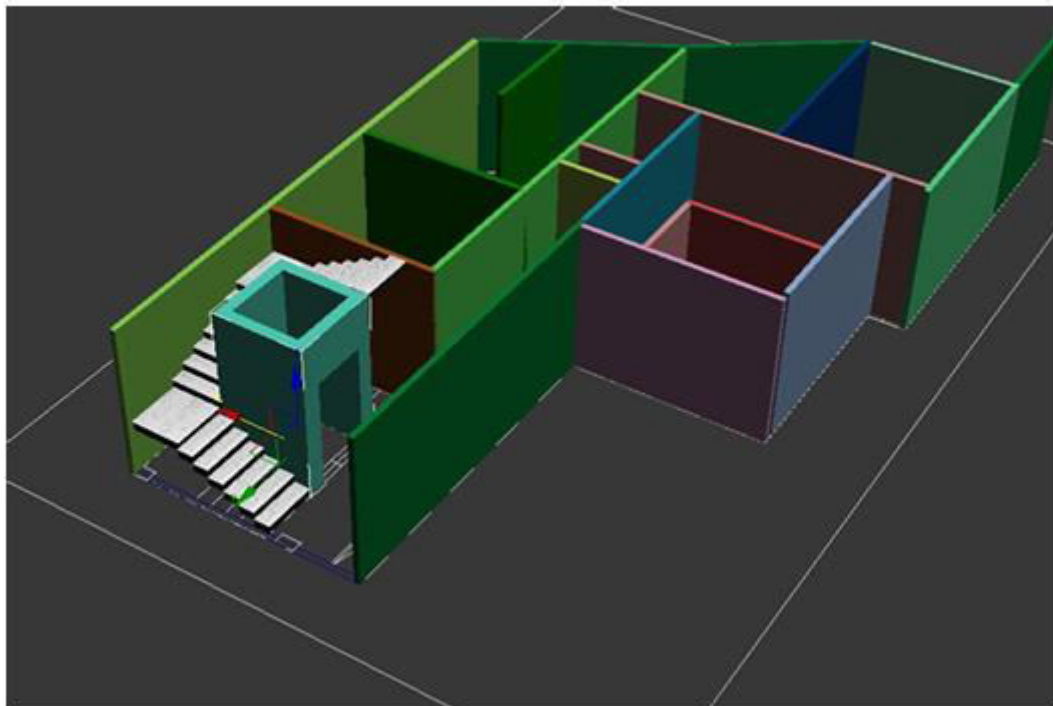


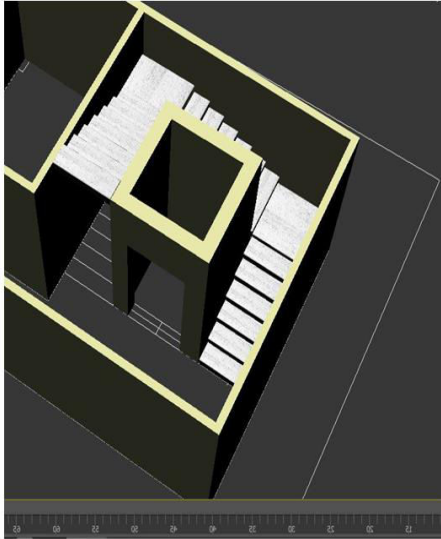
FIRST FLOOR PLAN

Fig. Shows the interface of the 3Ds Max software after importing the AutoCAD layouts



Fig, Show the interior sample designs of the our project





STAIR CASE



BIFOLD WINDOWS

Final Fig. Shows the exterior elevation of the Independent house





## V. CONCLUSION

The process of designing and visualizing an Independent house using AutoCAD and 3ds Max combines precision, efficiency, and creativity. AutoCAD plays a critical role in ensuring accurate 2D layouts, which serve as the foundation for the Independent house design. On the other hand, 3ds Max brings the design to life with realistic 3D modelling, texturing, and rendering.

This workflow not only delivers precise and visually compelling results but also enhances communication with clients and stakeholders through high-quality visuals and walkthroughs. The flexibility to make iterative changes ensures the final output aligns with the client's vision. Together, AutoCAD and 3ds Max provide a powerful platform to create designs that are both functional and aesthetically impressive.

## REFERENCES

- [1] The new living arrangement for Arunachalam and his wife, reflecting their improved financial situation. <https://www.wisdomlib.org/concept/independent-house>
- [2] Aafreen khan, shreyas shende (March 2023) Analysis and Design of Multistorey Hospital Building (G+4). @ <https://jepublications.com>
- [3] Madireddy Sathyanarayana, Eda Heema Shivani (March 2019) Design and Analysis of Independent House using CYPECAD Software. @ <https://jepublications.com>
- [4] Jayesh, Harish, Rithik Patel (March 2023) Analysis and Design of a Residential Building (G+4) by using STAAD PRO.
- [5] Rashmi agashe, Marshal Bagele, Vaishnavi Deshmukh, Sharad (april 2020) To study analysis and design of multistory building using STAAD pro and comparing with manual calculations.
- [6] Namaratha S.Patel, Vaishnavi N. Ghodake, Rucha & Yogesh (June 2022) Design and Modelling of commercial cum Independent House by using AUTODESK, Revit& STAADPRO.



INTERNATIONAL  
STANDARD  
SERIAL  
NUMBER  
INDIA



# INTERNATIONAL JOURNAL OF INNOVATIVE RESEARCH

IN SCIENCE | ENGINEERING | TECHNOLOGY

 9940 572 462  6381 907 438  [ijirset@gmail.com](mailto:ijirset@gmail.com)



[www.ijirset.com](http://www.ijirset.com)

Scan to save the contact details