



International Journal of Innovative Research in Science Engineering and Technology (IJIRSET)

(A Monthly, Peer Reviewed, Refereed, Scholarly Indexed, Open Access Journal)



Impact Factor: 8.524

Volume 14, Issue 1, January 2025

Enhancing Farmer Access to Modern Equipment through Intelligent Rental Solution

Arpitha J¹, Kalleth DS², Kishan Bharadwaj³

Assistant Professor, Department of Computer Science & Engineering, Sri Venkateswara College of Engineering,
Bangalore, Karnataka, India¹

Engineering Student, Department of Computer Science & Engineering, Sri Venkateswara College of Engineering,
Bangalore, Karnataka, India²

Engineering Student, Department of Computer Science & Engineering, Sri Venkateswara College of Engineering,
Bangalore, Karnataka, India³

ABSTRACT: Agriculture is an indispensable factor to the economic prosperity of developing countries like India. Lacking modern equipment availability and unclear pricing causes very high costs to small-scale farmers due to the fragmented markets that they come across. This paper recommends a rental system based on machine learning, which will help in the development of dynamic pricing. Connecting equipment owners and farmers, secure authentication, mobile access, and user-friendly interfaces will empower farmers and increase productivity sustainably.

KEYWORDS: Linear Regression, Random Forest, Regression Decision Tree, XGBoost.

I. INTRODUCTION

The agricultural sector is immensely important to keep developing countries like India stable, and where small-scale farmers, due to high costs, cannot afford modern equipment. This project has proposed an agricultural equipment rental system, which shall encourage consistent access to such equipment on equitable and transparent rental pricing terms. The existing methods for rental are both fragmented and inefficient, relying more on local advertisement and personal recommendations. This equipment owners-connecting platform also connects the farmers with the available equipment. This process uses machine learning algorithms to predict the prices of equipment based on the type, age condition, and market demand for different equipment types. Therefore, it promotes the use of fair and information-based approaches. It has adopted user-friendly interfaces as well as automated processes during the operation to deliver good user experience and operation efficiency. It empowers farmers and raises productivity by facilitating over-coming barriers in accessing markets and changing pricing models to contribute towards a more sustainable agricultural landscape.

II. LITERATURE SURVEY

In developing nations, the agricultural sector encounters numerous challenges, including limited access to modern machinery, which impedes the efficiency and income of small-scale farmers. A platform called Agri Brilliance was introduced to assist farmers by providing equipment rental services, utilizing machine learning algorithms like K-Nearest Neighbours, SVM, Random Forest, and VGG-16 for crop and disease prediction, and integrating soil and climate data from Kancheepuram, India, to recommend suitable crops [1].

However, this platform lacks comprehensive user feedback systems and real-time support features. A separate study focused on developing an agricultural marketplace that has taken user experience into serious considerations. (UX) principles, emphasizing efficiency, reliability, privacy, and communication, but lacking language support for non-Indonesian users and features for community development [2].

Raitu Vrudhi, an Android application for agro-marketing, facilitates direct interaction between farmers and buyers, offering features such as crop listing, price negotiation, and weather forecasts, but requires improvements for scalability and integration of data analytics for enhanced crop trend prediction [3].

Further studies have emphasized the significance of mobile applications in smart agriculture, highlighting the necessity for effective data collection and transformation. However, critical software engineering issues must be addressed to prevent application failure [4].

The utilization of IoT technologies in agriculture is another key focus, with systematic reviews highlighting various applications, sensors, and communication protocols while identifying open issues and challenges which requires additional research [5].

Additionally, data analytics platforms play a crucial role in agricultural systems, yet the adoption of these platforms faces significant obstacles that need to be addressed [6].

Common gaps across these studies include the need for user engagement metrics, scalable solutions with multilingual support. Using advanced data analytics in demand forecasting for crops and inventory management

III. METHODOLOGIES

Development of an agricultural equipment rental system applies structured approaches at each step of the project. These methods involve data collection, preparation, development of the machine learning model, and system design with a comprehensive approach on how to achieve the project objectives.

3.1. Data Collection

The very first step is collecting datasets for agricultural implements. This includes

Types of equipment: Gathering information about the machines like combine harvesters, cultivators, sprayers, Plows, tractors, manure spreaders, seed drills, mower, and harrows.

Features: For each dataset, there would be some features like the nomenclature of the equipment, age, condition, frequency of use, and any other related parameters that may determine the rental price.

Rent Cost: Historical rent cost data, for which machine learning-based models build a predictive model for, are collected. Information can be sourced from agricultural equipment rental companies, online platforms, or through surveys with the farmers and equipment suppliers.

3.2. Data Preprocessing

After having the data set, a complete preprocessing process is done to render it ready for analysis. This stage involves:

Data cleaning: The removal of errors, duplication, or missing values by either imputation or erasure.

Anomaly detection: application of Statistical methods, such as Z-score or IQR, to detect and thus manage outliers that may influence model predictions.

Imbalance Handling: For example, if some kind of or features of equipment are less than others, techniques like oversampling, under sampling, and synthetic minority over-sampling technique (SMOTE) are applied to balance datasets.

Scaling: All attributes need to be on a comparable scale by rescaling features for better performance of model.

3.3. Feature Selection

Feature selection techniques, including those applied for reducing complexity and improving the accuracy of the model:

Pearson correlation: To describe how different features and the target variable are correlated with strong characteristics.

Wrapper Methods: Apply wrapper algorithms, such as Recursive Feature Elimination, to rank subsets of features and derive the most important ones from within the subset.

3.4. Model Development

The data had to be cleaned and feature extracted after which it was applied through several machine learning algorithms to predict rents on the dataset. This is the approach by which the model development process was conducted:

Algorithm Comparison: Selection of Best Model for Dataset for Problem Solution

In this connection, all the models indicated above were run relative to rental price prediction:

Linear Regression
Random Forest Regression
Decision Tree Regression
XGBoost

Support Vector Regression (SVR)

Hyperparameter Tuning: Employing grid or random search to hyper-tune the model parameters to fine-tune performance.

Performance Measurement: In selecting the best model for each type of equipment, performance of each model can be measured using mean absolute error, root mean squared error, and R-squared values.

3.5. Model Saving and Deployment

After the identification of best models, retention is made of the serializing libraries such as Joblib or Pickle for further uses. These include the following types:

Integration of the retained models into the Flask backend system will allow for immediate predictions directly based on user inputs.

3.6. User Interface and Server-Side Development

System architecture differs from this approach because it is mainly distinguished on a client-server basis:

Front end development: Front-end development is carried out with HTML, CSS, and JavaScript for user-friendly and responsive accessibility by the consumer as well as the seller.

Server-Side Development: The backend architecture is built using Flask, which manages all API calls, user authentication, and sending predictions from the machine learning models to the frontend application.

3.7. User Evaluation and Input

To establish whether the system is usable and functional, it was tested empirically with both sellers and buyers. This includes:

Usability Testing: Collecting amounts as well as quality feedbacks on the interface and user experience in general.

Functional Verification: This ensures every system feature is an operationally valid one, meaning the rental price forecast is accurate.

Continuous Improvement. Changes implemented in the system based on user feed-back to generalize improvements in functionality and increase the notion of satisfying customers.

3.8. ML Models

Linear Regression: refers to the simple statistical method that is used for predictive analysis. It is a study in the relationship existing between two variables by use of a linear equation applied to a data set. Formula for simple linear regression model: $y = a + bx + \epsilon$. In this equation, y is defined as the dependent variable or target. x represents the independent variable or predictor. a refers to the intercept. The slope is represented by b . The error term is ϵ .

Random Forest Regression: the Random Forest technique is an ensemble learning approach that creates multiple decision trees during the training process and then returns the average prediction from these individual trees. It is resistant to overfitting and can solve both regression and classification problems. The primary hyperparameters that control its performance are the number of trees for the ensemble ($n_{\text{estimators}}$), the maximum number of nodes before further partitioning is allowed (max_depth), and the minimum number of samples required to split an internal node (min_samples_split).

Decision Tree Regression: is a non-parametric supervised algorithm that can be applied for both classification as well as regression. The partitioning of data into two subsets based on such feature values can make a tree-like structure. The internal node of this tree is a feature, and every branch corresponds to a decision rule, whereas a leaf node signifies an outcome.

XGBoost: A high performance distributed gradient boosting library. It is designed to be highly efficient and scalable, especially in constructing an ensemble of trees sequentially where each new tree attempts to correct the errors generated by its predecessor. All in all, this is what makes XGBoost highly accurate, efficient, and scalable, and many regularization techniques help avoid overfitting.

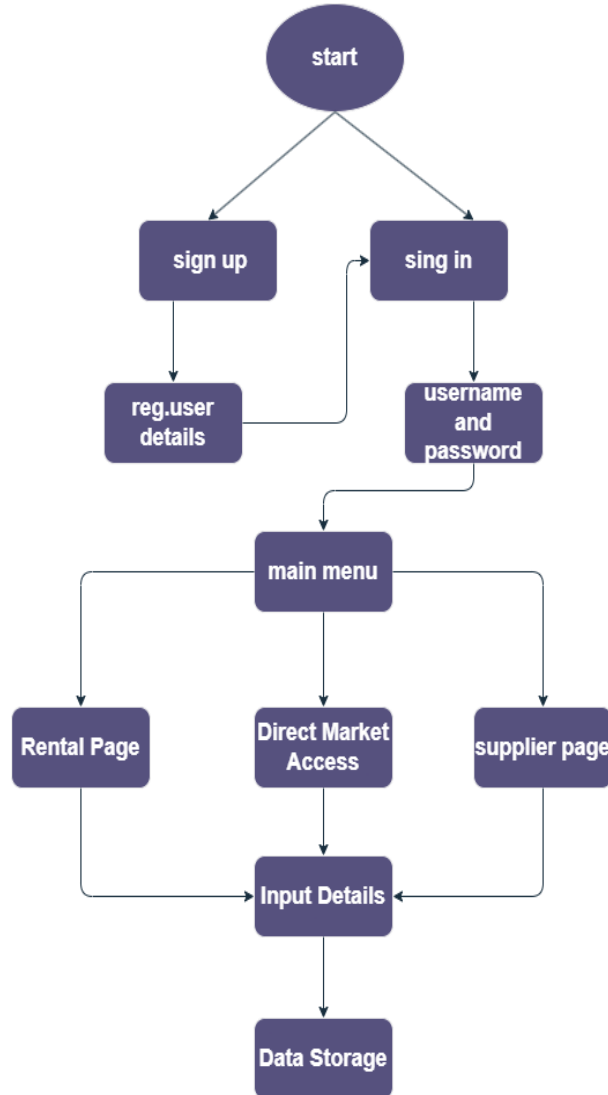


Fig.1: Training Process Flow Chart

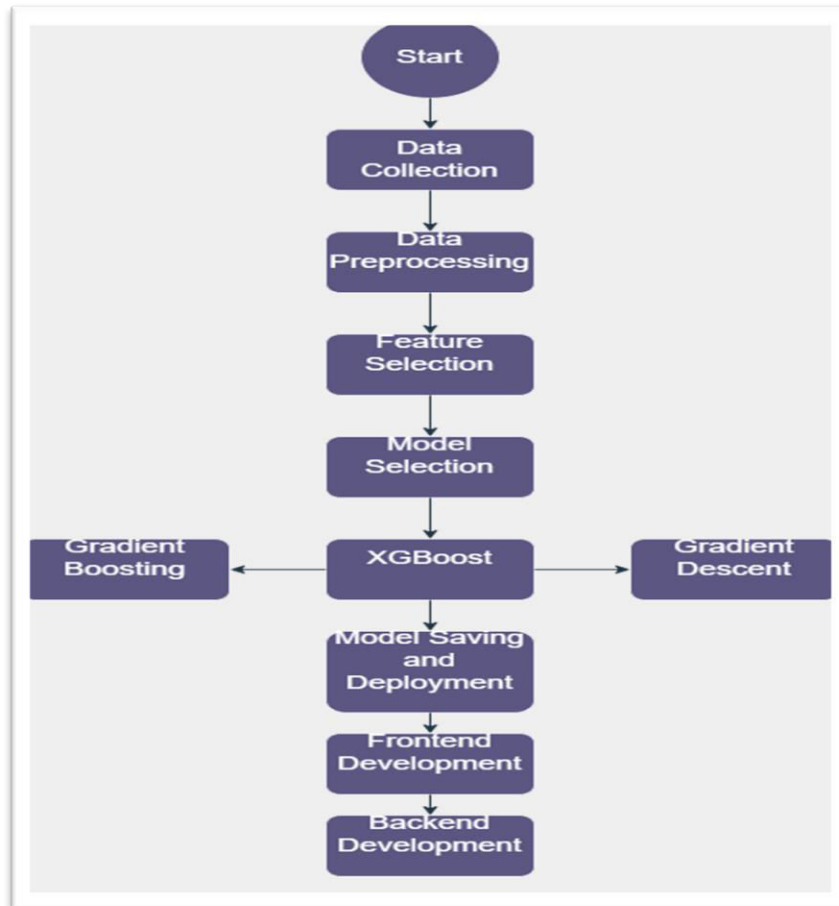


Fig. 2: User Flow Chart

IV. PROPOSED SYSTEM

The proposed system of agricultural equipment rental fills all the deficiency existing in the present structure by using technological and machine learning to build a more streamlined, responsive, and user-centric environment notable characteristics and improvements in the proposed framework include:

4.1 Centralized Digital Market:

A central clearing house in which suppliers can showcase their equipment, where customers can easily search and evaluate the options. This marketplace enhances ease of accessibility and efficiency for all parties involved.

4.2 Dynamic Pricing Framework:

Sophisticated algorithms of machine learning, in particular the model XGBoost, are used to determine optimal market rental rates with respect to the type of equipment, age, condition, and rental history. The XGBoost model combines several decision trees, hence it improves predictions at sub-problem levels through gradient boosting and gradient descent methodologies; hence it will promote transparency and make appropriate users' investment decisions.

4.3 Automated Processes:

Description: The system automates processes where users can list their equipment for rent, search for rentals, and complete transactions online. Automation enhances speed and minimizes potential errors associated with manual processes.

4.4 Data-Driven Insights:

The system provides both providers and consumers with significant information driven by data concerning market trends, pricing frameworks, and equipment efficacy. Such insights facilitate the decision-making process based on evidence.

4.5 Better User Experience:

This web system, developed based on modern web technologies such as HTML, CSS, and JavaScript, provides an intuitive interface that improves both navigation and interaction among the vendors and the consumers.

4.6 Verification and Security:

Secure protocols for user authentication and registration are set in place to protect personal data, thus creating trustworthiness and security on the part of all users.

V. CONSTRAINTS

5.1. Data Accessibility and Reliability:

Restricted Datasets: The amount and quality of data influence the accuracy and relevance of the machine learning models. Data sets which are limited to certain geographies, such as Kancheepuram, would not reflect the diversity of farming conditions and practices that exist in more expansive geographies. **Data Integrity:** Gaps or inconsistencies in soil, climate, and equipment usage information can adversely affect the machine learning models' precision and dependability.

5.2. Model Efficacy:

Overfitting: Despite the utilization of various machine learning techniques, the potential for overfitting remains, particularly when models are trained on limited or specific datasets. This could result in reduced performance when applied to novel or unfamiliar data. **Parameter Optimization:** The effectiveness of models such as XGBoost and Random Forest is contingent upon appropriate parameter tuning, which can be resource-intensive and may not always yield optimal outcomes.

5.3. User Involvement and Response:

User Acceptance: The platform's success is contingent upon adoption and continued use by farmers and equipment owners. Reluctance to embrace new technologies or lack of digital proficiency among users could impede its effectiveness. **Response Mechanisms:** Insufficient exploration of user feedback systems may result in inadequate ongoing refinement based on user experiences and needs, potentially impacting service quality and user satisfaction.

5.4. Real-Time Assistance and Decision-Making:

Immediate Data: The absence of real-time support features could restrict the platform's capacity to assist farmers during crucial decision-making periods. Incorporating real-time data analytics and support could enhance the system's utility. **Decision Guidance:** While machine learning models offer valuable insights, their recommendations should be complemented with expert agricultural knowledge to ensure practical and context-specific decision-making.

5.5. Applicability:

Specific Contexts: The findings and models developed are specific to the context in which the data was collected and may not be directly applicable to other regions or farming systems without modifications and additional validation.

5.6. Ethical and Privacy Concerns:

Data Protection: User data security and privacy should be protected. There should be strong security arrangements and clear, transparent privacy rules to minimize the risks of a data breach or abuse. **Ethical Implementation:** Implementations of AI and machine learning in agriculture should not cause any unanticipated consequence that would negatively affect farmers and their means of subsistence.

VI. ANALYSIS

The analysis of the results reveals a large number of very important observations about the effectiveness and feasibility of the proposed system:

6.1. Models and Performances Comparison:

The model XGBoost performs better compared to the rest of the models used, which includes even Linear Regression, Random Forest Regression, and Decision Tree Regression. It is shown by lower values for MAE and MSE along with the highest R2 score that the model will afford. This model is strong with capabilities to handle large datasets and model complex relationships using gradient boosting and gradient descent.

6.2. Error Analysis:

The MAE and MSE metrics reveal that the model is very accurate but with a few points as outliers in data contributing to overall error. Investigation of such outliers might make sense if it is further possible to refine such cases, where the model has strayed far from the actual price, either by train some model or in preprocessing of data.

6.3. Feature Importance:

Feature importance analysis gives insight to factors most significant in controlling rental prices: The reason preserving the quality equipment is a big deal is that it secures high rental rates. Brand recognition implies that investing resources into established brands may lead to increased rental income. Usage Patterns: Daily usage indicates high demand, justifying higher rental prices. Fuel Type: A preference for diesel-powered equipment, which could affect the choice of equipment for future acquisition.

6.4. Practical impact:

There are many tangible benefits in embedding the XGBoost model in the dynamic pricing framework. Precise pricing mechanisms guarantee equitable and competitive costs for both suppliers and consumers, thereby improving market efficacy. Market Insights: Provides suppliers with analytical insights into what influences rental pricing to enable strategic business decisions. User Experience: Transparent pricing and data-driven recommendations improve user satisfaction and engagement.

6.5. Presentation of Results:

Visualizations, including scatter plots comparing the true and predicted prices, confirm how accurate the model is. Feature importance plots give a very clear understanding of what variables most impact rental prices, giving way to better decision-making by vendors and consumers.

VII. RESULT

The proposed renting system for agricultural equipment was evaluated through a set of performance metrics. The principal findings from the dynamic pricing model, which uses XGBoost, are presented below:

Model Performance Metrics:

Mean Absolute Error (MAE): 50.34

Mean Squared Error (MSE): 4382.45

R2 Score: 0.87

The provided metrics yield the subsequent insights:

MAE: The difference between the real prices and the predicted rental prices on average is roughly 50.34 units.

MSE: The mean squared deviation between the forecasted and actual prices is 4382.45, which indicates the possibility of outliers.

The **R2** of 0.87 depicts the fact that the model explains the variation in rental prices at an 87 percent level, thus showing a good fit.

Model	MAE	MSE	R2 Score
Linear Regression	65.12	5820.18	0.74
Random Forest Regression	55.89	4901.56	0.82
Decision Tree Regression	60.45	5123.87	0.80
XGBoost	50.34	4382.45	0.87

Table 1: Feature Importance:

The XGBoost model underscored the key variables influencing rental prices:

The age of equipment generally goes with less costly rentals.

Condition: Equipment in excellent condition tends to have higher rental prices.

Brand: Significant brands positively impact the rental price.

Daily usage equipment commands a higher rate compared to that which is rarely put into use.

The rental cost of diesel operated equipment is usually high.

VIII. CONCLUSION

The proposed agricultural equipment rental system utilizes the use of state-of-the-art technology and machine learning concepts to establish an efficient, transparent, and user-centric platform.

A Centralized Online Marketplace is the main issue in this system, interacting vendors with consumers to ensure an efficient exchange of equipment. The use of the XGBoost model helps improve the accuracy of pricing by considering variables such as equipment type, age, condition, and rental history, which means the decision-making process will rely on data-driven and transparent rentals.

Automated processes enhance the operations of the system, eliminate errors, and increase efficiency; data-driven insights provide market trends and equipment performance. Conclusion This innovative system sets a whole new benchmark for the agriculture equipment rental market as it brings together technological advancement with user-centric design, thus revolutionizing an industry.

ACKNOWLEDGMENT

I am very thankful to my guide Mrs Arpitha J, Assistant Professor, Department of Computer Science and Engineering, SVCE for his cordial support, valuable information and guidance, to prepare this paper.

REFERENCES

1. Anuj Sanjay Patil, Neel Santosh Gupta, Prasanna Sridharan, Siddhant Krantikumar Patil, Vinita Mishra, "Revolutionizing Farming with Innovative Equipment Rental System", 2023 2nd International Conference on Edge Computing and Applications (ICECAA), pp.1641-1646, 2023.
2. Novák, Jakub & Masner, Jan & Vaněk, Jiří & Šimek, P. & Hennyeyová, Klára. (2019). User Experience and Usability in Agriculture – Selected Aspects for Design Systems. Agris on-line Papers in Economics and Informatics. 11. 75-83. 10.7160/aol.2019.110407.
3. Ramachandra Rao Kurada, Vaishalini Vunnam, Reshma Vasanthawada, Lakshmi Saranya Thondapu, N. Silpa, V.V.R. Maheswara Rao, "Face and Hand Gesture Recognition for Sign Languages to Support Non-Verbal Expressions using Convolutional Neural Network", 2024 10th International Conference on Advanced Computing and Communication Systems (ICACCS), vol.1, pp.1140-1146, 2024.
4. Oteyo, Isaac & Marra, Matteo & Kimani, Stephen & De Meuter, Wolfgang & Gonzalez Boix, Elisa. (2021). A Survey on Mobile Applications for Smart Agriculture: Making Use of Mobile Software in Modern Farming. SN Computer Science. 2. 10.1007/s42979-021-00700-x.
5. Farooq, Shoaib & Riaz, & Abid, Adnan & Zikria, Yousaf. (2020). Role of IoT Technology in Agriculture: A Systematic Literature Review. Electronics. 9. 319. 10.3390/electronics9020319.

6.Krisnawijaya, Ngakan & Tekinerdogan, Bedir & Catal, Cagatay & Tol, P.P.J.. (2022). Data analytics platforms for agricultural systems: A systematic literature review. Computers and Electronics in Agriculture. 195. 106813. 10.1016/j.compag.2022.106813.

Website Reference's

1.JFarm Services is an initiative by TAFE - Tractors and Farm Equipment Limited to increase easy access to farm mechanization solutions through rental of tractors and farm equipment for small and large farms.

<https://www.jfarmservices.in/>

2.AGRIMART is based in Bangalore and is promoted by Ratanagiri Impex Pvt Ltd., a pioneer of the Annapurna Group with decades of experience in agriculture, plantations, and commerce <https://agrimart.in/>

3. A professional business planning company, started with aim to make more realistic business plans and project reports and to make sure these reports & plans has more value than just a process

document.<https://meticulousplans.com/product/online-agricultural-equipment-rental-services/>

4.At Farmer's City, we envision a future where every farmer thrives in a connected, prosperous, and sustainable global community.

<https://services.farmerscity.in/rent-tractor-agri-machinery/>



INTERNATIONAL
STANDARD
SERIAL
NUMBER
INDIA



INTERNATIONAL JOURNAL OF INNOVATIVE RESEARCH

IN SCIENCE | ENGINEERING | TECHNOLOGY

 9940 572 462  6381 907 438  ijirset@gmail.com



www.ijirset.com

Scan to save the contact details