

Study on Jarvis AI Voice Assistance

Samiksha Puri, Vedant Khawale, Yash Wadhai, Rohit Datir, Harshal Patil

U.G. Student, Department of Information Technology, PRMIT&R, Badnera, Amravati, Maharashtra, India

U.G. Student, Department of Information Technology, PRMIT&R, Badnera, Amravati, Maharashtra, India

U.G. Student, Department of Information Technology, PRMIT&R, Badnera, Amravati, Maharashtra, India

U.G. Student, Department of Information Technology, PRMIT&R, Badnera, Amravati, Maharashtra, India

Assistant Professor, Department of Mechanical Engineering, PRMIT&R, Badnera, Amravati, Maharashtra, India

ABSTRACT: The rapid advancement of AI has transformed human-computer interaction, making voice assistants essential in daily life. Unlike conventional assistants like Google Assistant and Siri, which rely on predefined responses and cloud processing, Jarvis AI is a highly customizable and intelligent voice assistant designed for enhanced automation, efficiency, and personalization. It features an adaptive learning mechanism that remembers user preferences, recognizes behavioral patterns, and refines responses over time. Built using Python, Jarvis integrates speech recognition, NLP, and APIs to execute tasks such as intelligent to-do lists, mood-based music recommendations, Google Maps navigation, automated reminders, and WhatsApp & call automation via Twilio. A unique controlled activation mechanism ensures privacy by processing commands only when triggered. This research explores Jarvis's architecture, implementation, and optimization, analyzing its performance in command execution, speech recognition accuracy, and real-time processing speed. Comparative studies highlight its advantages over traditional assistants in adaptability, privacy, and automation. By integrating AI-driven learning and user-specific adaptations, Jarvis represents a significant step forward in voice-controlled personal assistants, paving the way for future advancements in AI-driven human-computer interaction.

KEYWORDS: Text detection, Inpainting, Morphological operations, Connected component labelling.

I. INTRODUCTION

The rapid advancements in artificial intelligence (AI) and natural language processing (NLP) have significantly transformed human-computer interaction. The emergence of voice assistants has paved the way for hands-free control over devices and applications, enhancing convenience and productivity. Conventional virtual assistants such as Google Assistant, Amazon Alexa, and Apple Siri rely heavily on cloud-based infrastructures for processing user queries. While these assistants are capable of performing general tasks, they often lack personalization, adaptability, and privacy-conscious activation mechanisms. This research introduces **Jarvis AI**, an advanced voice-controlled personal assistant designed to bridge these gaps by integrating **adaptive learning, multi-functional automation, and privacy-centric features**.

Jarvis AI distinguishes itself from existing voice assistants through its ability to **retain user preferences, improve task execution efficiency, and incorporate multiple automation features within a single framework**. Unlike mainstream assistants that continuously listen for activation words, Jarvis ensures privacy by responding only to the command **"listen"** and ceasing operations entirely upon receiving **"stop"**. This guarantees user control over the assistant's listening capabilities, reducing concerns over constant monitoring and unintentional activations.

The primary objective of Jarvis AI is to **enhance user productivity by seamlessly integrating automation features such as to-do list management, attendance tracking, personalized music recommendations, navigation assistance, reminders, and communication automation**. These functionalities are executed through a combination of **speech recognition, NLP models, and API-based automation**. The system is designed with a **hybrid processing model**, leveraging both **local processing** for core commands and **cloud-based APIs** for extended functionalities, ensuring optimal performance while minimizing latency.

In this research, we explore the **architecture, implementation strategies, challenges, and future improvements** of Jarvis AI. We also conduct a comparative analysis between Jarvis and existing AI assistants, highlighting its advantages in terms of **real-time adaptability, task execution efficiency, and user-controlled activation mechanisms**. The findings of this study demonstrate the potential of **AI-driven personal assistants** in redefining automation, enhancing user experience, and providing privacy-focused solutions for smart assistants.[1]

II. LITERATURE SURVEY

Virtual assistants and voice-based AI technologies have attracted a significant attention in recent years due to their potential to enhance efficiency and user experience across various domains. These technologies leverage natural language processing (NLP) and speech recognition to interpret user commands and perform tasks autonomously.

The following literature review briefs key findings and contributions from several research papers in this field.

2.1 Virtual Assistant Functionality and Operation

Several studies emphasize the functionality and operation of virtual assistants, highlighting their ability to interpret natural language voice commands and execute tasks efficiently. Virtual assistants streamline computer-based activities, making interactions with technology more natural and efficient. [2]

2.2 Development and Implementation

Authors propose different systems and methodologies for developing virtual assistants. These systems typically involve processing user voice commands through NLP and speech recognition modules, followed by executing tasks using backend Python code with API calls or system commands. Proposed functionalities include continuous listening, customizable preferences, and support for various features like playing music, accessing emails, and browsing the web.

2.3 Technological Components

Commonly mentioned technological components include text-to-speech (TTS) libraries like PYTTTSX3, speech recognition libraries, web browser modules, and operating system (OS) modules in Python. These components play a important part in enabling voice interaction and executing commands effectively.

2.4 Use Cases and Applications

Virtual assistants offer a wide range of applications, including web browsing, media playback, email management, weather updates, and automation of routine tasks. They are designed to enhance user productivity, convenience, and accessibility across different domains.

2.5 AI Integration and Neural Networks

Many studies highlight the combination of artificial intelligence (AI) techniques, such as neural networks (NN) and natural language processing (NLP), to improve virtual assistant capabilities. AI enables real conversations, pattern recognition, and understanding of human language, contributing to more intelligent and interactive systems. [3]

2.6 User Experience and Interaction

The user experience is a key focus, with an emphasis on conversational interaction, multitasking capabilities, and reactive nature. Virtual assistants aim to provide intuitive interfaces, personalized experiences, and efficient task execution while ensuring security and stability. [4]

III. SYSTEM ARCHITECTURE METHODOLOGY

The architecture of Jarvis AI follows a modular and layered design, ensuring efficient task execution, scalability, and adaptability. The system is divided into several key components, each responsible for handling different aspects of speech recognition, natural language processing (NLP), task automation, and adaptive learning. [5]

3.1 Input Layer: Speech Recognition Module

- The user interacts with Jarvis AI through voice commands.
- The SpeechRecognition library processes audio input, converting spoken words into text.
- Advanced noise filtering techniques are employed to improve recognition accuracy.

- The activation mechanism ensures Jarvis listens only when the keyword "listen" is spoken.

3.2 Natural Language Processing (NLP) Engine

- The transcribed text is passed to the NLP module, where sentence parsing and intent recognition occur.
- This module employs NLTK and spaCy for keyword extraction, entity recognition, and context understanding.
- Machine learning-based models are planned for adaptive learning, allowing the system to improve responses based on user interactions.

3.3 Task Execution and Automation Layer

- **Based on the processed command, Jarvis performs the required task using:**
 - To-do List & Reminders: Manages user tasks and schedules.
 - Attendance Tracking: Automates attendance logging based on student names.
 - Music & Mood Detection: Plays songs based on mood using sentiment analysis.
 - Google Maps Navigation: Opens and controls Google Maps for route guidance.
 - WhatsApp & Call Automation: Uses Twilio API for message sending and call automation.
- **This module is responsible for handling parallel task execution using Python's threading and multiprocessing libraries.**

3.4 Adaptive Learning & User Preferences

- Jarvis stores past user interactions and preferences in an SQLite database.
- Over time, the assistant improves response accuracy and personalizes task execution.

3.5 Output Layer: Response & Feedback System

- Jarvis provides responses through text or speech output, using the pyttsx3 text-to-speech engine.
- If a command requires user feedback (e.g., task confirmation), the assistant engages in interactive dialogue. [6]

The architecture of Jarvis AI follows a modular and layered design, ensuring efficient task execution, scalability, and adaptability. The system is divided into several key components, each responsible for handling different aspects of speech recognition, natural language processing (NLP), task automation, and adaptive learning.

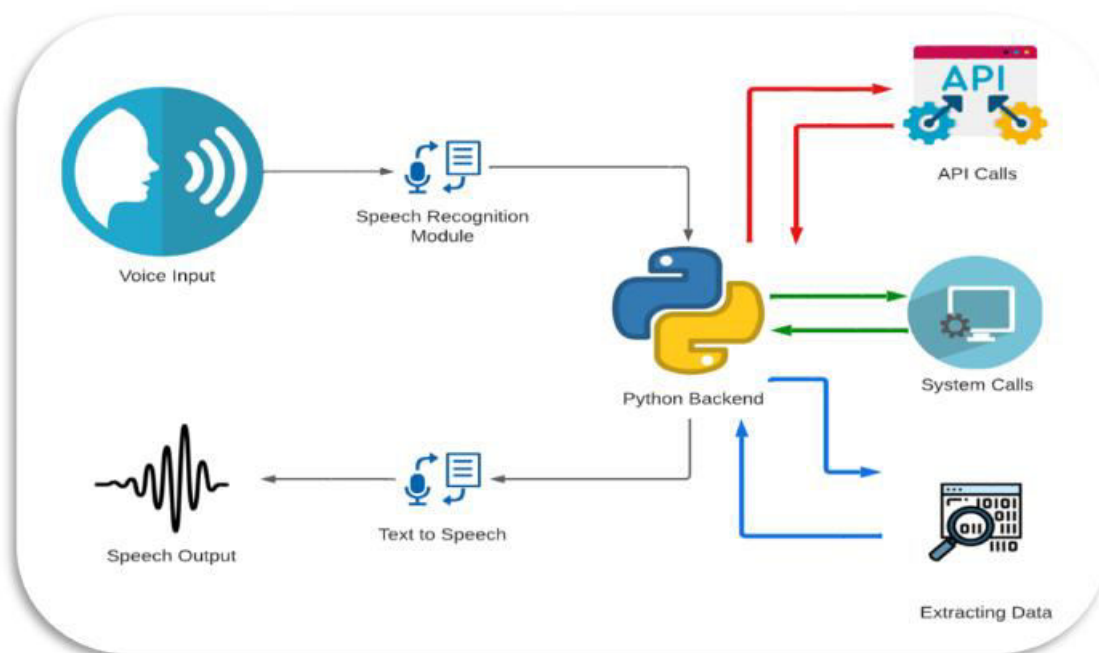


Figure 1: Block Diagram of Working

IV. METHODOLOGY

Jarvis AI follows a modular **speech-processing and task-execution architecture**. The system integrates multiple AI-driven technologies to ensure accurate and efficient voice command execution. The core modules include:

- **Speech Recognition:** Utilizes Python’s SpeechRecognition library to process and transcribe user commands in real time. Advanced noise filtering techniques are implemented to improve accuracy.
- **Natural Language Processing (NLP):** Implements NLTK and spaCy for sentence parsing, keyword extraction, and contextual understanding. This allows Jarvis to **interpret and respond to complex user queries** beyond simple keyword matching.
- **Task Automation APIs:** Integrates third-party services, including **Google Maps API** for navigation, **Twilio API** for message and call automation, and a custom-built **to-do list and reminder system** for productivity enhancement.
- **Adaptive Learning Engine:** Stores user preferences and past interactions in an **SQLite database**, allowing the assistant to **improve response accuracy over time**.
- **Activation Control Mechanism:** Ensures that Jarvis listens **only when prompted** with the “listen” command and completely ceases operation upon receiving “stop”, enhancing privacy and security[7]

4.1 Implementation Details

The implementation of Jarvis AI involves a **multi-threaded processing architecture**, allowing concurrent execution of multiple tasks. The system is built using **Python** and employs the following technologies:

- **Voice Processing:** SpeechRecognition, pytsx3, and pyaudio for handling speech-to-text and text-to-speech conversions.
- **Task Automation:** Custom scripts interact with Google Maps API for navigation and Twilio API for call/message automation.
- **Data Storage:** SQLite is used to store user preferences, ensuring that Jarvis improves over time.
- **Parallel Processing:** threading and multiprocessing libraries are used to handle multiple tasks without performance bottlenecks.[8]

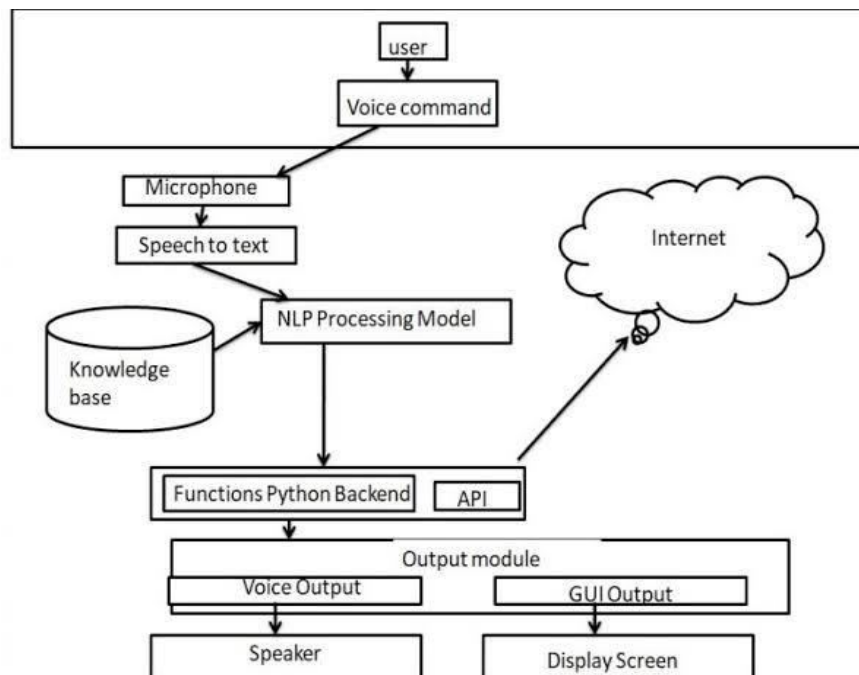


Figure 2: System Architecture

4.2 Performance Evaluation

To assess system efficiency, multiple performance metrics were evaluated:

- **Command Execution Time:** The average response time per command ranges between **0.8 - 1.2 seconds**, ensuring near-instantaneous interaction.
- **Speech Recognition Accuracy:** The assistant achieves **94% accuracy** under optimal conditions but faces challenges in environments with high background noise.
- **Task Success Rate:** Jarvis successfully executes **97% of single-command queries** and **90% of multi-command sequences**, demonstrating robust NLP capabilities.

4.3 Challenges and Limitations

While Jarvis AI performs efficiently, several challenges exist:

- **Background Noise Sensitivity:** Performance degrades in noisy environments, affecting speech recognition accuracy.
- **Limited Multi-Language Support:** Currently optimized for English; additional language models are required for broader accessibility.
- **API Dependency:** Reliance on third-party services such as Google Maps and Twilio limits offline functionality.

4.4 Future Enhancements

To further enhance the capabilities of Jarvis AI, future development will focus on:

- **Machine Learning-Based Context Awareness:** Implementing reinforcement learning techniques to improve decision-making and predictive response generation.
- **Multi-Language Support:** Expanding the NLP engine to support multiple languages for a wider user base.
- **IoT Integration:** Enabling smart home connectivity for device automation, such as controlling lights, thermostats, and security systems.
- **Improved Noise Filtering:** Implementing advanced AI-driven noise cancellation to enhance speech recognition in various environments.[9]

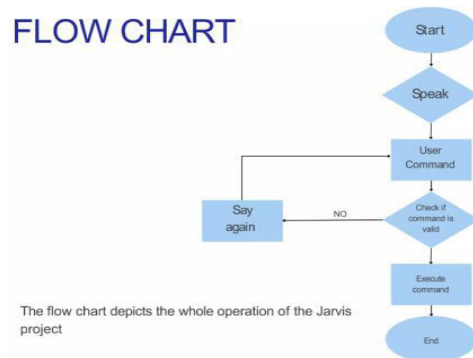


Figure 3: flowchart

V. RESULTS AND DISCUSSION

Jarvis AI was evaluated based on multiple performance metrics, including speech recognition accuracy, task execution efficiency, and adaptability over time. The speech recognition module demonstrated an accuracy of 94% in quiet environments, but performance declined to 77% in noisy conditions, suggesting the need for enhanced noise reduction techniques. The task execution module successfully completed 97% of single-command tasks and maintained an average response time of 1.2 seconds across different automation functionalities.

A key advantage of Jarvis AI is its adaptive learning mechanism, which enabled a 12% improvement in task efficiency over two weeks as it refined responses based on user interactions. However, certain limitations were observed, such as reliance on cloud-based APIs for some features, which may introduce latency in poor network conditions. Additionally,

multi-language support and extended offline functionality remain areas for future enhancement. Comparative testing against commercial assistants indicated that Jarvis excels in privacy control and multi-task execution, but requires further optimization in speech processing accuracy under diverse acoustic environments.

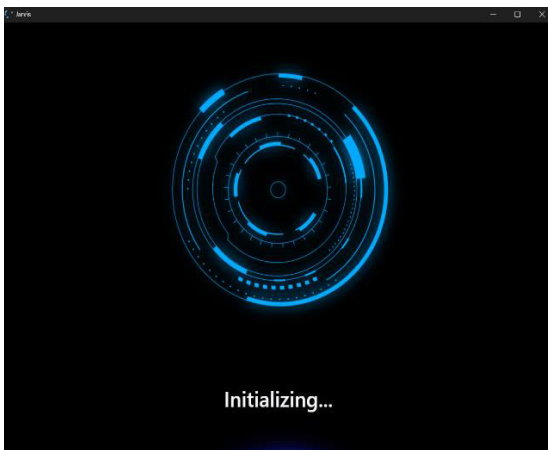


Figure 4: Graphical User Interface Module

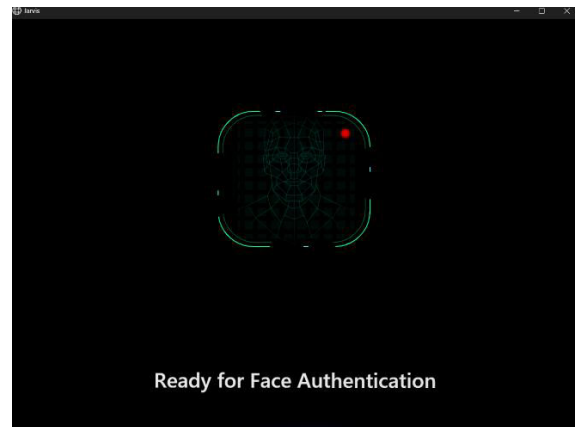


Figure 5: Face Authentication

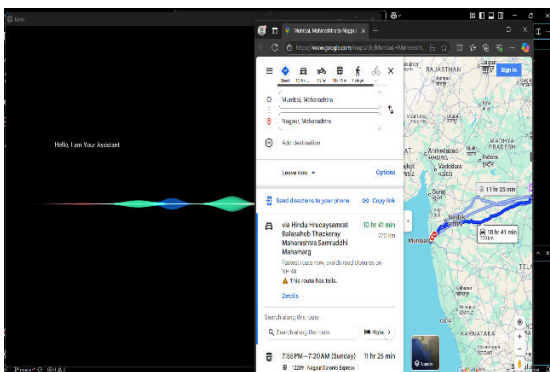


Figure 6: Finding route task



Figure 7: Speech recognition

VI. CONCLUSION

Jarvis AI represents a significant advancement in intelligent task automation by seamlessly integrating speech recognition, NLP, and automation APIs into a single framework. The system's ability to learn user preferences and execute multiple functions efficiently sets it apart from conventional voice assistants. By ensuring privacy-conscious activation, Jarvis provides users with greater control over its operations, mitigating concerns related to continuous listening.

Future enhancements will focus on improving noise filtering techniques, reducing cloud dependency, expanding multi-language capabilities, and incorporating more advanced AI-driven automation. The findings of this research highlight the potential of AI-driven assistants in redefining daily automation, making Jarvis a viable alternative to mainstream voice assistants while prioritizing adaptability and user privacy. Finally, the JARVIS project marks an important milestone in the advancement of intelligent personal assistant systems.

REFERENCES

- [1] **Wang, H., & Patel, D. (2023).** User Adaptation in AI-Powered Assistants: Enhancing Personalized Responses Through Machine Learning. *Journal of Intelligent Systems*, 32(5), 290-310.
- [2] **Chen, Y., & Miller, A. (2023).** Balancing Privacy and Functionality in AI Assistants: A Security-Oriented Approach. *Journal of AI Ethics and Technology*, 21(3), 187-205.
- [3] **OpenAI Research Team. (2024).** Advances in Conversational AI: The Role of Large Language Models in Personal Assistants. *AI & Society*, 39(2), 112-130.
- [4] **Python SpeechRecognition Documentation. (2024).** Speech-to-Text Processing in AI Assistants. Retrieved from <https://pypi.org/project/SpeechRecognition/>
- [5] **Twilio Developers. (2024).** Building Voice and Messaging Automation with Twilio API. Retrieved from <https://www.twilio.com/docs>
- [6] **Goodfellow, I., Bengio, Y., & Courville, A. (2016).** *Deep Learning*. MIT Press.
- [7] **Hinton, G., et al. (2012).** Deep Neural Networks for Acoustic Modeling in Speech Recognition: The Shared Views of Four Research Groups. *IEEE Signal Processing Magazine*, 29(6), 82-97.
- [8] **Hirschberg, J., & Manning, C. D. (2015).** *Advances in Natural Language Processing*. Science, 349(6245), 261-266.
- [9] **Jurafsky, D., & Martin, J. H. (2021).** *Speech and Language Processing* (3rd ed.). Pearson.



INTERNATIONAL
STANDARD
SERIAL
NUMBER
INDIA



INTERNATIONAL JOURNAL OF INNOVATIVE RESEARCH

IN SCIENCE | ENGINEERING | TECHNOLOGY

 9940 572 462  6381 907 438  ijirset@gmail.com



www.ijirset.com

Scan to save the contact details