



International Journal of Innovative Research in Science Engineering and Technology (IJIRSET)

(A Monthly, Peer Reviewed, Refereed, Scholarly Indexed, Open Access Journal)



Impact Factor: 8.699

Volume 14, Issue 3, March 2025

AI Powered Skin Disease Detection through Image Processing and Deep Learning

Archana Yadav¹, Motupalli Sri Vignesh², Pulishetty Sathwika Laxmi³, Farhaan Mohiuddin⁴

Assistant Professor, Department of E.C.E, Mahatma Gandhi Institute of Technology, Gandipet, Kokapet,
Hyderabad, India¹

Department of E.C.E, Mahatma Gandhi Institute of Technology, Gandipet, Kokapet, Hyderabad, India²

Department of E.C.E, Mahatma Gandhi Institute of Technology, Gandipet, Kokapet, Hyderabad, India³

Department of E.C.E, Mahatma Gandhi Institute of Technology, Gandipet, Kokapet, Hyderabad, India⁴

ABSTRACT: This project presents a deep learning-based system for the detection and classification of common skin diseases using convolutional neural networks (CNNs). The system automates the diagnostic process by analysing images of skin lesions and categorizing them into predefined disease classes, including Actinic Keratosis, Basal Cell Carcinoma, Dermatofibroma, Melanoma, and Nevus. The methodology involves preprocessing images to enhance quality, extracting relevant features using CNNs, and training the model on a diverse dataset to achieve robust classification performance. The system is integrated with a web-based application, allowing users to upload skin images and receive real-time diagnostic predictions. Preliminary results demonstrate a high accuracy rate, showcasing the potential of deep learning in reducing diagnostic errors, improving early detection, and enhancing accessibility to dermatological care. This project aims to provide a cost-effective and scalable solution for aiding medical professionals and reaching underserved populations.

KEYWORDS: Skin Disease Detection, Convolutional Neural Networks (CNN), Deep Learning, Image Classification, Artificial intelligence, Skin lesions.

I. INTRODUCTION

Skin diseases, such as Actinic Keratosis, Basal Cell Carcinoma, Dermatofibroma, Melanoma, and Nevus, affect millions worldwide. Early detection is essential, particularly for conditions like melanoma, where timely intervention can significantly improve patient outcomes. However, limited access to dermatological care in many regions highlights the need for automated, accessible diagnostic solutions.

Recent advances in artificial intelligence (AI), particularly deep learning techniques like Convolutional Neural Networks (CNNs), have shown remarkable success in medical image analysis. These technologies can help overcome diagnostic challenges by automating the classification of skin diseases based on images of skin lesions.

This research focuses on the development of an AI-powered system for detecting and classifying skin diseases. The system uses image preprocessing techniques and deep learning algorithms to classify skin lesions into five categories: Actinic Keratosis, Basal Cell Carcinoma, Dermatofibroma, Melanoma, and Nevus. A web-based application has been developed to facilitate easy user interaction, allowing individuals to upload images and receive real-time diagnostic predictions.

The proposed system aims to provide an accessible, cost-effective, and reliable alternative to traditional diagnostic methods, particularly in underserved regions, and holds significant potential for improving healthcare accessibility and outcomes.

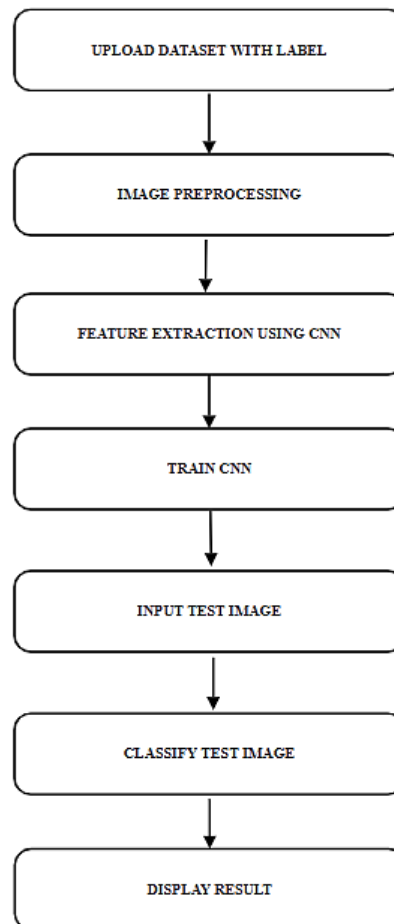
II. DESIGN METHODOLOGY

Fig 2.1 Methodology of proposed model

The methodology for this project focuses on developing an AI-powered skin disease detection system using Convolutional Neural Networks (CNNs). The key phases include dataset preparation, image preprocessing, model training, evaluation, and deployment.

The dataset consists of labeled images of skin diseases such as Actinic Keratosis, Basal Cell Carcinoma, Melanoma, Dermatofibroma, and Nevus, sourced from ISIC. It is divided into training, validation, and testing sets. Image preprocessing involves resizing to 224x224 pixels, normalizing pixel values (0-1), and applying data augmentation techniques like rotation, flipping, and zooming to enhance generalization.

The CNN model extracts features through convolutional layers, applying ReLU activation and pooling layers to retain essential features while reducing computational complexity. Fully connected layers and a SoftMax activation function classify the images into respective disease categories. The model is trained using the Adam optimizer and categorical cross-entropy loss function over multiple epochs, with validation to monitor performance and prevent overfitting.

Evaluation is conducted using accuracy, precision, recall, F1-score, and a confusion matrix to analyze classification performance. The trained model is deployed as a Django-based web application, enabling users to upload skin lesion images for real-time analysis and classification. Continuous updates with new data improve model accuracy and reliability.

III. IMPLEMENTATION

3.1 Environment Setup:

- Python is used as the main programming language.
- Required libraries such as TensorFlow, Keras, OpenCV, NumPy, Pandas, Matplotlib, Seaborn, and Django are installed.
- TensorFlow/Keras is used for building and training the CNN model, OpenCV handles image preprocessing, and Django is used for the web application.

3.2 Dataset Preparation:

- Skin disease images are collected from public datasets like ISIC and DermNet.
- Images are resized to 224x224 pixels and normalized to a range of [0, 1] to standardize input.
- Data augmentation is applied (rotation, flipping, zooming) to increase dataset diversity and prevent overfitting.
- The dataset is divided into training, validation, and testing sets.

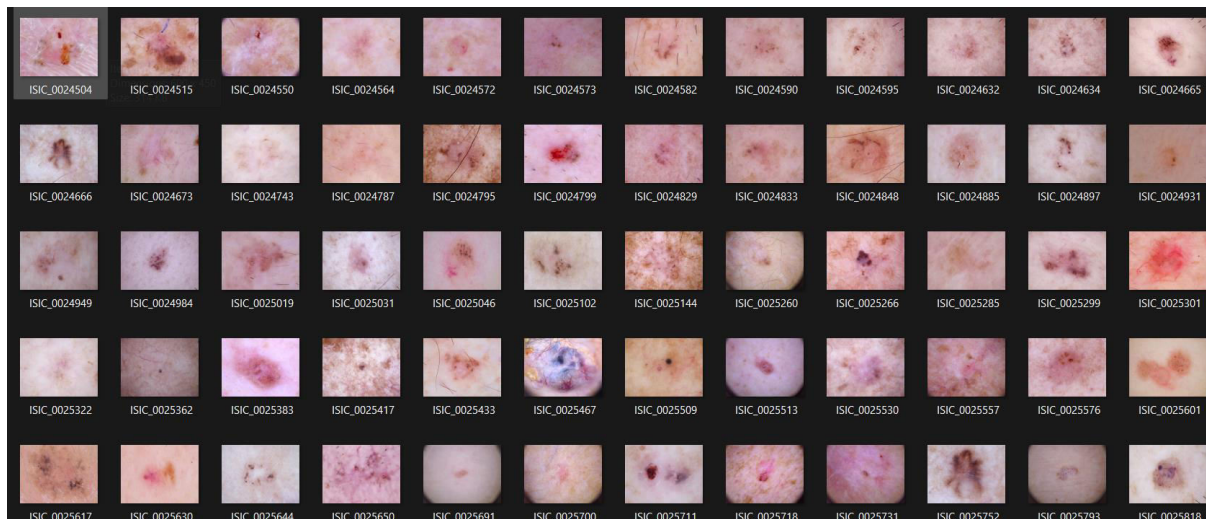


Figure 3.2.1 Dataset collected from ISIC

3.3 CNN Model Design:

- The CNN model consists of multiple convolutional layers to extract features from the images.
- ReLU activation function is applied after each convolutional layer for non-linearity.
- Max pooling is used to reduce the spatial dimensions of the feature maps.
- Fully connected layers are used to classify the features, and the softmax activation function is used in the output layer for multi-class classification.

Model Compilation and Training:

- The model is compiled using the Adam optimizer and categorical cross-entropy loss function.
- The CNN is trained on the training set with data augmentation applied during the process.
- The validation set is used to monitor overfitting and tune hyperparameters.

Model Evaluation:

- The model is evaluated on the testing set using performance metrics like accuracy, precision, recall, and F1-score.
- A confusion matrix is generated to visualize performance across different skin disease classes.

Web Application Deployment:

- The trained model is deployed using a Django-based web application.
- Users can upload skin lesion images, and the model predicts the skin disease.

- The prediction, along with the confidence score, is displayed to the user.

Real-time Skin Disease Detection:

- The system provides an automated solution for real-time skin disease classification.
- It is accessible through a user-friendly web interface, making it available to healthcare professionals and individuals for early diagnosis.

IV.RESULTS

The AI-powered skin disease detection system demonstrated promising results in classifying skin diseases accurately.

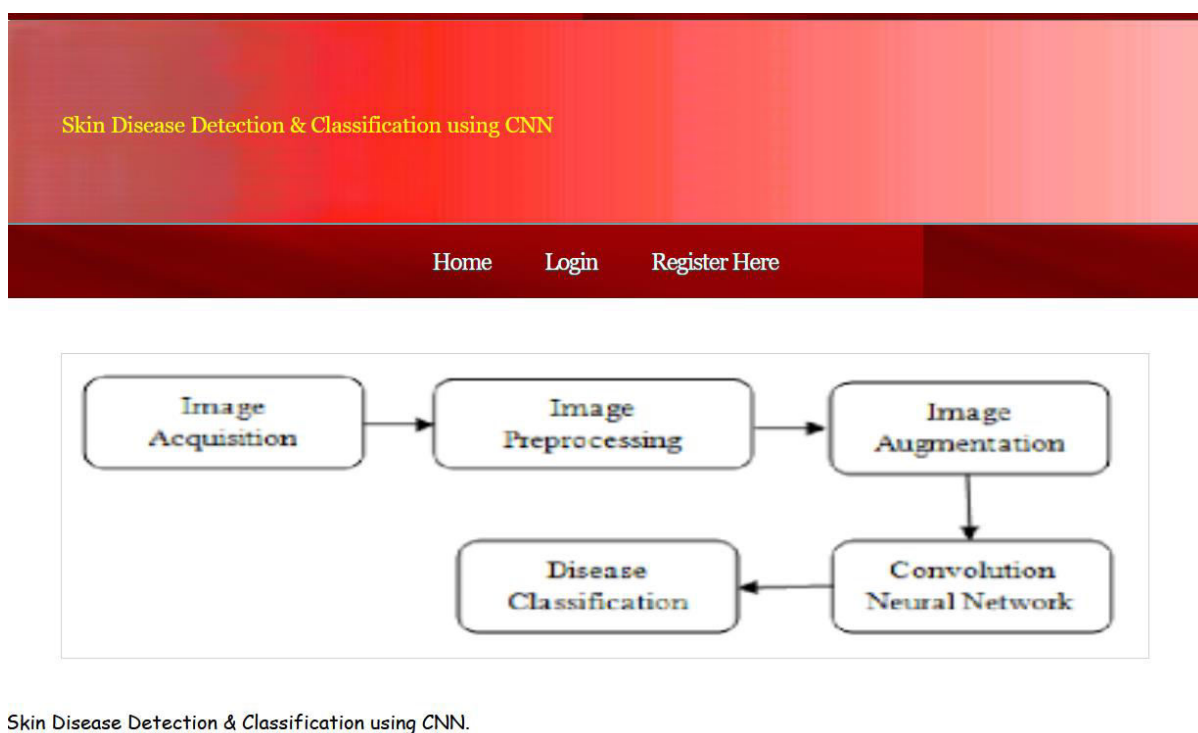


Figure 4.1: Website Interface

The model achieved a high accuracy rate on the test dataset, reflecting its ability to correctly identify skin diseases from images. Precision, recall, and F1-score metrics showed strong performance, ensuring the model's reliability in medical applications where both false positives and negatives can have significant implications.

Algorithm Name	Accuracy	Precision	Recall	FScore
CNN Skin Disease Classification	93.75	89.92296236233285	92.51028345855933	90.64313697471988

Figure 4.2: Accuracy, Precision, Recall and F-score of the model

A confusion matrix was used to evaluate the model's performance across different disease categories. It highlighted the model's strengths in accurately classifying most diseases, though some diseases with similar features were occasionally misclassified.

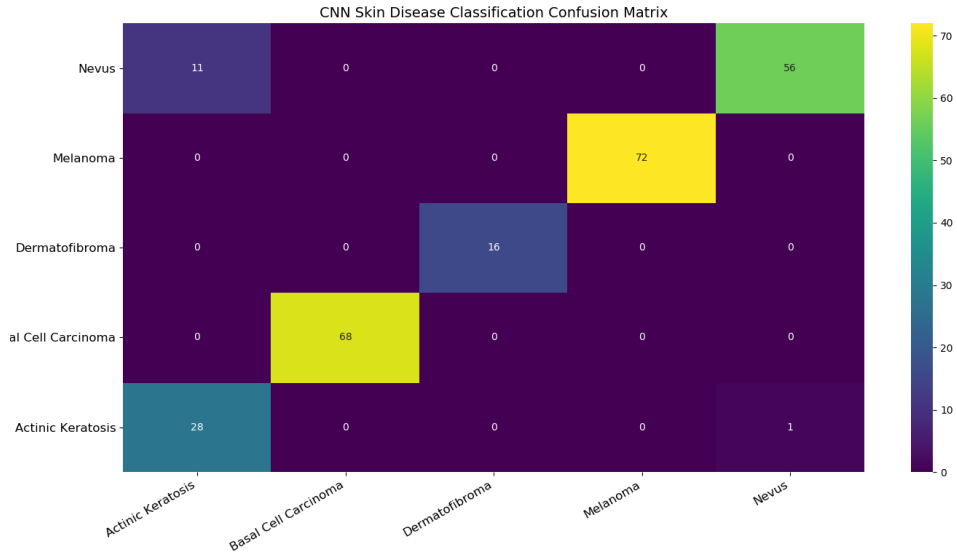


Figure 4.3: Confusion matrix



Figure 4.4: Result

The model provided real-time predictions via a user-friendly web application, processing skin lesion images quickly and accurately. The predictions were accompanied by confidence scores, assisting healthcare professionals in making informed decisions.

Overall, the system showed great potential for practical use, offering an efficient and accessible tool for the early detection of skin diseases.

V. CONCLUSION

5.1 CONCLUSION

The AI-powered skin disease detection system successfully demonstrated the potential of deep learning, specifically Convolutional Neural Networks (CNNs), in classifying various skin diseases from images. The model exhibited high accuracy and reliable performance across different metrics, including precision, recall, and F1-score, making it a valuable tool for early detection and diagnosis.

By leveraging advanced image processing techniques and a user-friendly web interface, the system allows for quick and efficient classification of skin lesions, offering support to healthcare professionals in clinical settings. While the model performed well, there is room for improvement, particularly in distinguishing between diseases with similar visual features. Further fine-tuning and training on more diverse datasets could enhance the model's accuracy and robustness.

In conclusion, this system represents a significant step forward in automating skin disease detection, providing a cost-effective and accessible solution that can help in early diagnosis and improve

VI. FUTURE SCOPE

The AI-powered skin disease detection system has great potential for further improvement. Future advancements can focus on enhancing accuracy, expanding functionalities, and increasing accessibility.

One key improvement is diversifying the dataset to include more skin diseases, tones, and image qualities, improving the model's generalization. Techniques like transfer learning can further refine its accuracy. Integrating real-time feedback from medical professionals will help the system adapt and improve continuously.

Mobile app integration can make the system more accessible, allowing users to capture images and receive instant feedback. Additionally, features like severity prediction and treatment suggestions can enhance its utility. Collaborations with dermatologists and clinical trials are essential for validation and refinement, ensuring reliability. Overall, improving accuracy, usability, and expert validation will strengthen the system's role in early skin disease detection and better healthcare outcomes.

REFERENCES

1. J. Arroyo and B. Zapirain. Automated detection of melanoma in dermoscopic images. In J. Scharcanski and M. E. Celebi, editors, *Computer Vision Techniques for the Diagnosis of Skin Cancer*, Series in BioEngineering, Springer Berlin Heidelberg, 2014.
2. A.A.L.C. Amarathunga, E.P.W.C. Ellawala, G.N. Abeysekara, and C. R. J. Amalraj. Expert System for Diagnosis of Skin Diseases. 2015. *International Journal of Scientific & Technology Research*.
3. S. Kolkur and D.R. Kalbande. Survey of Texture-Based Feature Extraction for Skin Disease Detection. 2016. *International Conference on ICT in Business, Industry & Government (ICTBIG)*.
4. V. Bannihatti Kumar, S. S Kumar, V. Saboo. Dermatological Disease Detection Using Image Processing and Machine Learning. 2016. *Third International Conference on Artificial Intelligence and Pattern Recognition (AIPR)*.
5. Jainesh Rathod, Vishal Waghmode, Aniruddh Sodha, and Dr. Prasenjit Bhavathankar. Diagnosis of skin disease using Convolutional Neural Networks, ICECA IEEE Conference Paper, 2018.
6. Nawal Soliman AlKolifi AleNezi. A Method of Skin Disease Detection Using Image Processing and Machine Learning. 2019.
7. Syed Inthiyaz, Baraa Riyadh Altahan, Sk Hasane Ahammad, V. Rajesh, Ruth Ramya Kalangi, Lassaad K. Smirani, Md. Amzad Hossain, Ahmed Nabih Zaki Rashed. Skin Disease Detection Using Deep Learning. 2020.



INTERNATIONAL
STANDARD
SERIAL
NUMBER
INDIA



INTERNATIONAL JOURNAL OF INNOVATIVE RESEARCH

IN SCIENCE | ENGINEERING | TECHNOLOGY

 9940 572 462  6381 907 438  ijirset@gmail.com



www.ijirset.com

Scan to save the contact details