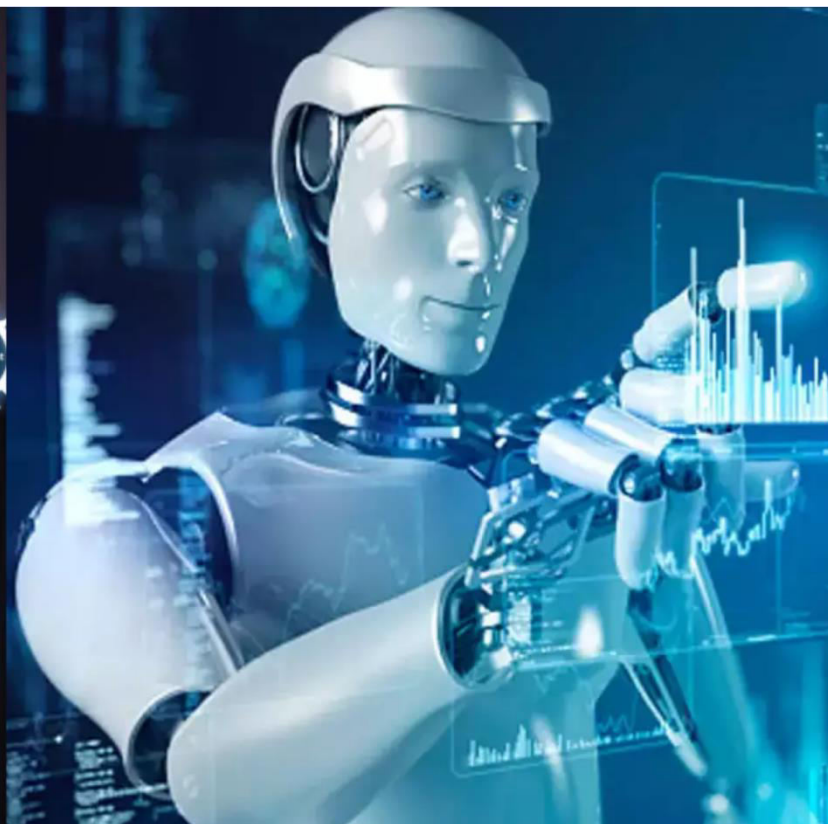




International Journal of Innovative Research in Science Engineering and Technology (IJIRSET)

(A Monthly, Peer Reviewed, Refereed, Scholarly Indexed, Open Access Journal)



Impact Factor: 8.699

Volume 14, Issue 3, March 2025

A Comprehensive Review of Advancements and Applications of Deep Learning in the Era of Industry 4.0

Ms. S. Rubarani

Head and Assistant Professor, Excel College for Commerce and Science, Komarapalayam, Namakkal, Affiliated by
Periyar University, Salem, Tamil Nadu, India

ABSTRACT: Deep learning is a subset of machine learning that uses multilayered neural networks, called deep neural networks, to simulate the complex decision-making power of the human brain. Some form of deep learning powers most of the artificial intelligence (AI) applications in our lives today. Deep learning (DL), a branch of machine learning (ML) and artificial intelligence (AI) is nowadays considered as a core technology of today's Fourth Industrial Revolution (4IR or Industry 4.0). Due to its learning capabilities from data, DL technology originated from artificial neural network (ANN), has become a hot topic in the context of computing, and is widely applied in various application areas like healthcare, visual recognition, text analytics, cybersecurity, and many more.

KEYWORDS: Artificial Neural Networks, Biological Neuron, Perceptron, Multi-layer Perceptron, Feedforward Neural Network

I. INTRODUCTION

1.1. What is deep learning?

The definition of Deep learning is that it is the branch of machine learning that is based on artificial neural network architecture. An artificial neural network or ANN uses layers of interconnected nodes called neurons that work together to process and learn from the input data.

In a fully connected deep neural network, there is an input layer and one or more hidden layers connected one after the other. Each neuron receives input from the previous layer neurons or the input layer. The output of one neuron becomes the input to other neurons in the next layer of the network, and this process continues until the final layer produces the output of the network. The layers of the neural network transform the input data through a series of nonlinear transformations, allowing the network to learn complex representations of the input data.

1.2 Historical Development

In the late 1980s, neural networks became a prevalent topic in the area of Machine Learning (ML) as well as Artificial Intelligence (AI), due to the invention of various efficient learning methods and network structures.

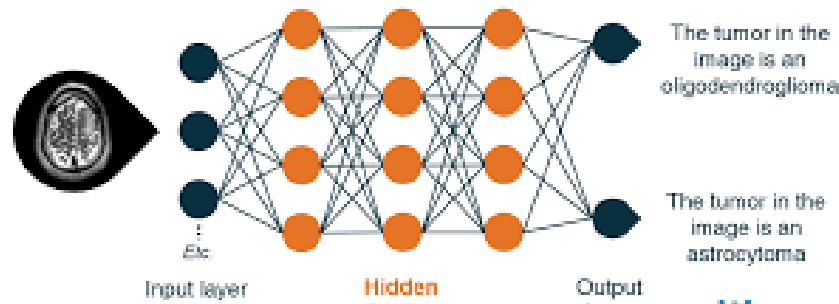
Multilayer perceptron networks trained by "Back propagation" type algorithms, self-organizing maps, and radial basis function networks were such innovative methods.

While neural networks are successfully used in many applications, the interest in researching this topic decreased later on.

After that, in 2006, "Deep Learning" (DL) was introduced by Hinton et al, which was based on the concept of artificial neural network (ANN). Deep learning became a prominent topic after that, resulting in a rebirth in neural network research, hence, some times referred to as "new-generation neural networks". This is because deep networks, when properly trained, have produced significant success in a variety of classification and regression challenges

DEEP LEARNING (DL)

A deep neural network



1.3 Scope of Deep Learning

Deep learning AI can be used for supervised, unsupervised as well as reinforcement machine learning. it uses a variety of ways to process these.

Supervised Machine Learning: Supervised machine learning is the machine learning technique in which the neural network learns to make predictions or classify data based on the labeled datasets.

Unsupervised Machine Learning: Unsupervised machine learning is the machine learning technique in which the neural network learns to discover the patterns or to cluster the dataset based on unlabeled datasets.

Reinforcement Machine Learning: Reinforcement Machine Learning is the machine learning technique in which an agent learns to make decisions in an environment to maximize a reward signal.

1.4 Application of Deep Learning:

Deep learning has a wide range of applications across multiple industries and fields. Some of the most common applications include:

Computer vision: Deep learning is used in image and video recognition, object detection, semantic segmentation, and other computer vision tasks. Applications include self-driving cars, security cameras, and image recognition for mobile devices.

Natural language processing: Deep learning is used in natural language understanding, machine translation, sentiment analysis, and other natural language processing tasks. Applications include chatbots, virtual assistants, and language-based search engines.

Speech recognition: Deep learning is used in speech recognition, voice identification, and voice synthesis. Applications include voice-controlled assistants, voice-enabled devices and voice-controlled robots.

Predictive analytics: Deep learning is used to analyze historical data and make predictions about future events. Applications include fraud detection, customer churn prediction, and demand forecasting.

Recommender systems: Deep learning is used to analyze patterns in data to recommend items to users. Applications include movie and music recommendations, news recommendations, and product recommendations.

Healthcare: Deep learning is used to analyze medical images and patient data, to improve diagnosis and treatment, and to identify potential health risks. Applications include cancer diagnosis, drug discovery, and personalized medicine.

Finance: Deep learning is used to detect fraudulent transactions, to identify potential risks, and to make predictions about stock prices. Applications include credit fraud detection, algorithmic trading, and risk management.

Marketing: Deep learning is used to analyze customer data, to predict customer behavior and to personalize marketing campaigns. Applications include customer segmentation, customer lifetime value prediction, and personalization

Gaming: Deep learning is used to train agents to play games, and to develop intelligent game-playing algorithms. Applications include game bots, game-playing AI, and adaptive game design.

Robotics: Deep learning is used to enable robots to learn from experience and adapt to their environment. Applications include autonomous vehicles, drones, and industrial robots.

1.5 Advantages of Deep Learning:

Deep learning has several advantages over traditional machine learning methods, some of the main ones include:

Automatic feature learning: Deep learning algorithms can automatically learn features from the data, which means that they don't require the features to be hand-engineered.

Handling large and complex data: Deep learning algorithms can handle large and complex datasets that would be difficult for traditional machine learning algorithms to process.

Improved performance: Deep learning algorithms have been shown to achieve state-of-the-art performance on a wide range of problems, including image and speech recognition, natural language processing, and computer vision.

Handling non-linear relationships: Deep learning can uncover non-linear relationships in data that would be difficult to detect through traditional methods.

Handling structured and unstructured data: Deep learning algorithms can handle both structured and unstructured data such as images, text, and audio.

Predictive modeling: Deep learning can be used to make predictions about future events or trends, which can help organizations plan for the future and make strategic decisions.

Handling missing data: Deep learning algorithms can handle missing data and still make predictions, which is useful in real-world applications where data is often incomplete.

1.6 Disadvantages of Deep Learning:

High computational cost: Training deep learning models requires significant computational resources, including powerful GPUs and large amounts of memory. This can be costly and time-consuming.

Overfitting: Overfitting occurs when a model is trained too well on the training data and performs poorly on new, unseen data. This is a common problem in deep learning, especially with large neural networks, and can be caused by a lack of data, a complex model, or a lack of regularization.

Lack of interpretability: Deep learning models, especially those with many layers, can be complex and difficult to interpret. This can make it difficult to understand how the model is making predictions and to identify any errors or biases in the model.

Dependence on data quality: Deep learning algorithms rely on the quality of the data they are trained on. If the data is noisy, incomplete, or biased, the model's performance will be negatively affected.

Data privacy and security concerns: As deep learning models often rely on large amounts of data, there are concerns about data privacy and security. Misuse of data by malicious actors can lead to serious consequences like identity theft, financial loss and invasion of privacy.

Lack of domain expertise: Deep learning requires a good understanding of the domain and the problem you are trying to solve. If the domain expertise is lacking, it can be difficult to formulate the problem and select the appropriate algorithm.

Unforeseen consequences: Deep learning models can lead to unintended consequences, for example, a biased model can discriminate against certain groups of people, leading to ethical concerns.

Limited to the data its trained on: Deep learning models can only make predictions based on the data it has been trained on. They may not be able to generalize to new situations or contexts that were not represented in the training data.

Black box models: some deep learning models are considered as “black-box” models, as it is difficult to understand how the model is making predictions and identifying the factors that influence the predictions.

Cybersecurity: Deep learning is used to detect patterns in network traffic, and to identify and respond to cyber threats. Applications include intrusion detection and prevention, and malware detection.

II. CONCLUSION

Deep Learning becomes very important in every field. In this paper, we focus on mainly the concept of Deep Learning. We discussed here about the Scope of Deep Learning. We see its many benefits but also it has some disadvantages. There are many challenges that we are facing while using Deep Learning. so these kinds of challenges we are facing.

References

REFERENCES

1. Deep Learning with Python-François Chollet
2. Grokking Deep Learning-Andrew W. Trask
3. Neural Networks and Deep Learning-Charu C. Aggarwal
4. Deep Learning-Ian Goodfellow, Yoshua Bengio, and Aaron Courville
5. Hands-On Machine Learning With Scikit-Learn, Keras, and Tensorflow-Aurélien Géron



INTERNATIONAL
STANDARD
SERIAL
NUMBER
INDIA



INTERNATIONAL JOURNAL OF INNOVATIVE RESEARCH

IN SCIENCE | ENGINEERING | TECHNOLOGY

 9940 572 462  6381 907 438  ijirset@gmail.com



www.ijirset.com

Scan to save the contact details