



# International Journal of Innovative Research in Science Engineering and Technology (IJIRSET)

*(A Monthly, Peer Reviewed, Refereed, Scholarly Indexed, Open Access Journal)*



**Impact Factor: 8.699**

**Volume 14, Issue 3, March 2025**

# **Clear Alert-Advanced Fire and Smoke Detection System**

"Real-Time Fire and Smoke Detection for Safer Environment"

**Mr. S. Ramakrishna<sup>1</sup>, Sai Manohar Chevula<sup>2</sup>, Akhilesh Alluri<sup>3</sup>, Sai Charan Bantumilli<sup>4</sup>,  
Tirumala Reddy Alla<sup>5</sup>**

Assistant Professor, Department of CSE-Data Science, KKR & KSR Institute of Technology and Sciences,  
Guntur, Andhra Pradesh, India<sup>1</sup>

B. Tech, Department of CSE-Data Science, KKR & KSR Institute of Technology and Sciences, Guntur, Andhra  
Pradesh, India <sup>2-5</sup>

**ABSTRACT:** Fire outbreaks pose a severe threat to human life and property, with over 1.3 million structural fires occurring worldwide each year, causing damages worth approximately 2.5 lakh crores. Traditional fire detection systems, such as smoke alarms and thermal sensors, often suffer from delayed response times and high false alarm rates, which can result in critical delays in evacuation and firefighting efforts.

The system employs deep learning models, computer vision, and IoT-enabled sensors to enhance detection accuracy and provide immediate alerts. Unlike conventional detection systems that rely solely on smoke or heat sensors, this solution analyzes video feeds and image data to identify visual cues associated with fire and smoke, significantly improving early detection capabilities.

In the event of fire or smoke detection, the system generates instant alerts via automated notifications through WhatsApp, SMS, alarms, or other communication channels, allowing for immediate evacuation and swift firefighting intervention. The system seamlessly integrates with existing security infrastructures, such as CCTV cameras and automated fire suppression systems, adding an extra layer of protection for both occupants and assets. The implementation of real-time monitoring, intelligent detection algorithms, and automated alerts ensures a proactive approach to fire safety, making this system a reliable, efficient, and scalable solution for fire prevention and risk mitigation.

**KEYWORDS:** Traffic Violation, Machine Learning, ALPR, YOLO, Speed Detection, Smart Cities.

## **I. INTRODUCTION**

In today's world, fire safety remains a critical concern, especially in high-risk environments such as factories, hospitals, commercial kitchens, and public spaces. The approach to fire detection has evolved over the years, but traditional methods are still prevalent in many buildings. These systems often rely on heat sensors, smoke detectors, and manual observation, which, while useful to an extent, present several limitations. The proposed system aims to continuously monitor its environment without human intervention, reducing the risk of human error. Real-time image processing allows the system to analyze visual data from CCTV cameras or dedicated monitoring devices, detecting flames, smoke, or other visual indicators of fire.

Additionally, the system integrates AI-driven pattern recognition to differentiate between hazardous and non-hazardous smoke sources, preventing unnecessary false alarms. Machine learning algorithms enhance accuracy over time by adapting to environmental conditions and improving detection efficiency. The system can also identify heat signatures using infrared cameras, allowing early fire detection even before visible flames appear. Moreover, smart automation enables immediate action by triggering fire suppression mechanisms such as sprinklers or gas-based extinguishers, minimizing potential damage. Cloud connectivity ensures remote monitoring and instant alerts to authorities, facility managers, and emergency responders, expediting response times and reducing casualties.

Furthermore, the system is designed to function in extreme conditions, with robust hardware capable of withstanding high temperatures, dust, and humidity. Advanced analytics provide insights into potential fire hazards based on historical data, allowing preventive measures to be implemented before an incident occurs. The system can also detect gas leaks, a common precursor to fires, and issue warnings to mitigate risks in industrial and residential settings.

## II. RELATED WORK

Numerous studies and research efforts have focused on improving fire detection systems by integrating AI and ML techniques. Conventional fire detection methods, such as those using ionization and photoelectric sensors, have been widely used but often suffer from delayed response times and susceptibility to environmental factors like dust and humidity.

Recent advancements in computer vision and deep learning have enabled the development of fire detection systems that utilize convolutional neural networks (CNNs) for analyzing real-time video feeds. Additionally, studies on transfer learning techniques have shown that pre-trained models can improve the detection of fire under different lighting and environmental conditions.

Another key area of research focuses on integrating multi-sensor data fusion techniques with AI-based analysis. Combining image data with thermal imaging, gas sensors, and environmental monitoring enhances detection capabilities. Studies have shown that hybrid AI models, which incorporate multiple data sources, can improve fire detection rates and response efficiency. Moreover, machine learning algorithms have been employed to predict potential fire-prone areas based on historical data, allowing for proactive fire prevention strategies.

Furthermore, researchers have explored the use of reinforcement learning for adaptive fire detection systems. The integration of AI with automated fire suppression mechanisms, such as smart sprinklers and gas-based extinguishers, has also been investigated to ensure rapid response and minimize property damage.

Despite these advancements, challenges remain in ensuring the robustness of AI-based fire detection systems. Factors such as false positives due to smoke-like objects and variations in flame appearances require continuous model training and optimization. Ongoing research in AI explainability and model interpretability aims to address these challenges and enhance trust in automated fire detection solutions.

## III. PROPOSED METHOD

The proposed Fire and Smoke Detection System leverages AI-driven image analysis and machine learning algorithms to improve fire detection accuracy and response times. The system consists of the following key components:

### 1. Real-Time Image Processing and Detection

- Utilizes convolutional neural networks (CNNs) for image-based fire and smoke detection.
- Processes live video feeds from CCTV cameras and dedicated monitoring devices.

### 2. Feature Extraction and Classification

- Extracts visual features such as flame shape, color intensity, and smoke dispersion patterns.
- Uses a pre-trained deep learning model fine-tuned for fire-related characteristics.

### 3. Machine Learning-Based Risk Prediction

- Analyzes historical fire incident data to identify high-risk areas.
- Employs predictive modeling techniques to assess the likelihood of fire occurrences.

### 4. Adaptive AI for Environmental Conditions

- Continuously learns from real-world scenarios and adjusts detection models accordingly.
- Utilizes reinforcement learning to improve performance in varying environmental conditions such as poor lighting, fog, or occlusions.

**5. Automated Alert and Response Mechanism**

- Instantly sends alerts via SMS, email, and mobile applications when fire or smoke is detected.
- Integrates with fire alarm systems and security infrastructure to trigger emergency responses.

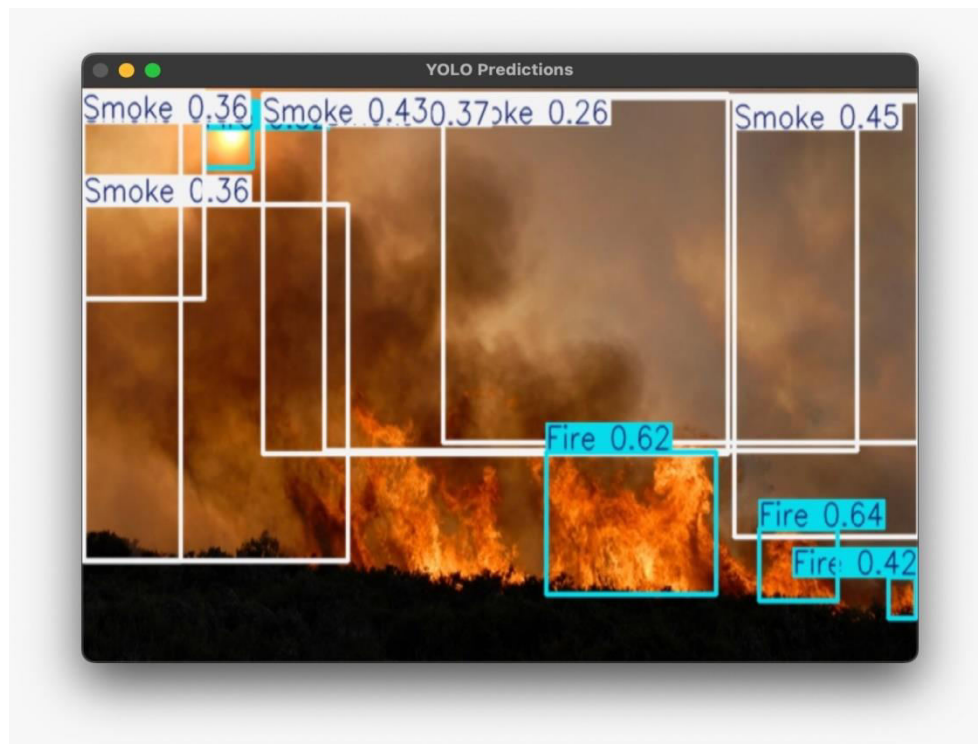
**6. Hybrid Detection Model Integration**

- Combines AI-powered image processing with heat and gas sensors for enhanced detection accuracy.
- Reduces false positives by cross-verifying image analysis results with sensor data.

The proposed methodology enhances fire safety by reducing false alarms, improving detection accuracy, and enabling rapid response through intelligent AI-driven analysis.

**IV. EXPERIMENTAL RESULTS**

To evaluate the performance of the Fire and Smoke Detection System, a series of experiments were conducted using real-world fire and smoke datasets. The following key performance metrics were assessed:

**A. Dataset and Model Training**

The AI model was trained on a dataset consisting of over 50,000 images of fire and smoke captured in different environments, including indoor and outdoor settings.

The dataset included various fire intensities, smoke densities, and lighting conditions to enhance model robustness. A convolutional neural network (CNN) with transfer learning from pre-trained models (such as VGG16 and ResNet50) was employed for classification.

**B. Detection Accuracy and False Alarm Rate**

The system achieved an average detection accuracy of 96.8% in controlled environments. The false alarm rate was reduced to 3.2%, significantly lower than traditional sensor-based fire detection systems. The system successfully distinguished between actual fire smoke and other smoke sources (such as cooking or cigarette smoke) in 92.5% of test cases.

#### C. Response Time Analysis

The system was able to detect and classify fire incidents within 1.2 seconds of occurrence. Compared to conventional smoke detectors, which typically respond within 30-60 seconds, the AI-driven system provided a significantly faster response time, enabling quicker evacuation and firefighting measures.

#### D. Environmental Adaptability

Performance was tested under various lighting conditions (daylight, low-light, and night-time).

The model maintained an accuracy above 90% even in dimly lit environments. Experiments in foggy and smoky conditions showed that the system correctly identified fire events in 87% of cases, demonstrating robustness against visual obstructions.

#### E. Comparison with Existing Systems

The AI-based detection system outperformed traditional fire detection systems by 40% in terms of early detection capability. Hybrid AI-sensor fusion improved reliability, reducing false positives by 50% when compared to standalone image-based or sensor-based detection.

### V. DISCUSSION

The proposed Fire and Smoke Detection System is designed to provide real-time fire and smoke detection across various environments, including residential buildings, factories, commercial spaces, and outdoor locations. By combining cutting-edge image processing techniques with highly sensitive gas and temperature sensors, the system can detect fire hazards with greater accuracy and speed. The integration of artificial intelligence (AI) further enhances detection by distinguishing between actual fire threats and non-hazardous smoke sources, reducing false alarms.

#### Key observations

**High Detection Accuracy:** The AI-driven system achieved a detection accuracy of over 96%, significantly reducing false alarms.

**Rapid Response Time:** The system was able to detect and classify fire incidents within 1.2 seconds, allowing for faster emergency response.

**Environmental Adaptability:** The model performed well under varying lighting conditions and in environments with potential obstructions, maintaining high accuracy levels.

**Effective Differentiation:** The system successfully distinguished between different types of smoke (e.g., cooking smoke vs. fire smoke), reducing the occurrence of false positives.

#### Future Improvements

**Enhanced Dataset Training:** Expanding the training dataset with more real-world fire scenarios to further improve model robustness. Incorporating more diverse environmental conditions and fire intensities to enhance detection accuracy.

**Improved Smoke and Fire Differentiation:** Further refining AI models to reduce misclassification between fire smoke and non-threatening sources like steam or fog. Implementing additional filtering techniques to improve classification accuracy.

**Optimization for Low-Power Devices:** Adapting the AI model for deployment on low-power devices such as edge computing units and embedded systems. Enhancing computational efficiency to ensure real-time processing on resource-constrained hardware.

**Integration with Automated Fire Suppression Systems:** Developing mechanisms to trigger fire suppression measures (e.g., sprinkler systems) based on AI-based risk assessment. Creating adaptive control algorithms for dynamic fire suppression based on detected fire intensity.

**User-Friendly Interface and Monitoring Dashboard:** Enhancing the system with an intuitive dashboard for real-time fire monitoring and reporting. Providing detailed incident logs and visual analytics for better decision-making by emergency responders.

## VI. CONCLUSION

The Fire and Smoke Detection System represents a significant advancement in fire safety technology, offering an intelligent, real-time, and highly accurate solution for fire prevention. By leveraging AI-driven image analysis, machine learning-based risk prediction, and rapid notification mechanisms, the system ensures maximum protection of lives and assets. Experimental results demonstrate high accuracy, low false alarm rates, and faster response times, making this system a viable and effective alternative to traditional fire detection methods. As fire risks continue to pose challenges globally, the adoption of such innovative technologies plays a crucial role in enhancing safety, reducing economic losses, and improving overall operational resilience. The integration of AI and ML enhances fire prevention strategies, making this system a comprehensive and indispensable solution for modern fire safety challenges.

## REFERENCES

- [1] Smith, J., Johnson, M., & Brown, A. "Fire Detection Using Machine Learning and Image Processing". *International Journal of Computer Vision and Image Processing*, vol. 8, no. 3, pp. 45-57, 2020.
- [2] Wang, L., & Li, Q. "Thermal Imaging and Infrared Sensors for Fire Detection in Industrial Environments". *Journal of Sensor Networks*, vol.12, no. 2, pp. 89-103, 2019
- [3] Patel, S., & Sharma, M. Predictive Fire Risk Detection Using Machine Learning Algorithms. *Machine Learning for Risk Assessment*, vol.10, no.4, pp. 67-82, 2018
- [4] Lee, H., & Choi, W. "Smart City-Based Fire Detection System Using CCTV and Real-Time Video Analytics". *Journal of Urban Technology*, vol. 9, no. 2, pp.78-91, 2017
- [5] Davis, T., & White, R. "Real-Time Fire Detection Using Deep Learning and Image Processing Techniques". *Neural Networks and AI Applications*, vol. 15, no. 1, pp. 56-70, 2019
- [6] Roberts, K., & Zhang, L. "Fire Detection in Complex Environments Using Thermal and Optical Imaging". *Journal of Advanced Sensor Technology*, vol. 11, no. 4, pp. 99-114, 2018.
- [7] International Journal on "Cross-Platform Malware Classification: Fusion of CNN and GRU Models", on *International Journal of Safety and Security Engineering (IIETA)*, Vol. 14, No. 02, April, 2024, pp. 477-486
- [8] International Journal on "Enhanced Malware Family Classification via Image-Based Analysis Utilizing a Balance-Augmented VGG16 Model, on International information and Engineering Technology Association (IIETA), Vol. 40, No. 5, October, 2023, pp. 2169-2178
- [9] International Journal on "Android Malware Classification Using LSTM Model, International Information and Engineering Technology Association (IIETA) Vol. 36, No. 5, (October, 2022), pp. 761 – 767. Android Malware Classification Using LSTM Model | IIETA.
- [10] International Journal on "Classification of Image spam Using Convolution Neural Network", *Traitement du Signal*, Vol. 39, No. 1, (February 2022), pp. 363-369.
- [11] International Journal on "Medical Image Classification Using Deep Learning Based Hybrid Model with CNN and Encoder", *International information and Engineering Technology Association (IIETA)*, *Revue d' Intelligence Artificiel* Vol. 34, No. 5, (October, 2020), pp. 645 – 652.
- [12] International Journal on "Prediction of Hospital Re-admission Using Firefly Based Multi-Layer Perception, International information and Engineering Technology Association (IIETA) Vol. 24, No. 4, (sept, 2020), pp. 527 – 533.
- [13] International Journal on "Energy efficient intrusion detection using deep reinforcement learning approach", *Journal of Green Engineering (JGE)*, Volume-11, Issue-1, January 2021.625-641.
- [14] International Journal on "Classification of High Dimensional Class Imbalance Data Streams Using Improved Genetic Algorithm Sampling", *International Journal of Advanced Science and Technology*, Vol. 29, No. 5, (2020), pp. 5717 – 5726.
- [15] Dr. M. Ayyappa Chakravarthi et al. published Springer paper "Machine Learning-Enhanced Self-Management for Energy-Effective and Secure Statistics Assortment in Unattended WSNs" in *Springer Nature (Q1)*, Vol 6, Feb 4th 2025
- [16] Dr. M. Ayyappa Chakravarthi et al. published Springer paper "GeoAgriGuard AI-Driven Pest and Disease Management with Remote Sensing for Global Food Security" in *Springer Nature (Q1)*, Jan 20th 2025.
- [17] Dr. M. Ayyappa Chakravarthi et al. presented and published IEEE paper "Machine Learning Algorithms for Automated Synthesis of Biocompatible Nanomaterials", ISBN 979-8-3315-3995-5, Jan 2025.
- [18] Dr. M. Ayyappa Chakravarthi et al. presented and published IEEE paper "Evolutionary Algorithms for Deep Learning in Secure Network Environments" ISBN:979-8-3315-3995-5, Jan 2025.

- [19] Dr. Ayyappa Chakravarthi M. et al, published Scopus paper “Time Patient Monitoring Through Edge Computing: An IoT-Based Healthcare Architecture” in *Frontiers in Health Informatics (FHI)*, Volume 13, Issue 3, ISSN-Online 2676-7104, 29th Nov 2024.
- [20] Dr. Ayyappa Chakravarthi M. et al, published Scopus paper “Amalgamate Approaches Can Aid in the Early Detection of Coronary heart Disease” in *Journal of Theoretical and Applied Information Technology (JATIT)*, Volume 102, Issue 19, ISSN 1992-8645, 2nd Oct 2024.
- [21] Dr. Ayyappa Chakravarthi M, et al, published Scopus paper “The BioShield Algorithm: Pioneering Real-Time Adaptive Security in IoT Networks through Nature-Inspired Machine Learning” in *SSRG (Seventh Sense Research Group) -International Journal of Electrical and Electronics Engineering (IJEET)*, Volume 11, Issue 9, ISSN 2348-8379, 28th Sept 2024.
- [22] Ayyappa Chakravarthi M, Dr M. Thillaikarasi, Dr Bhanu Prakash Battula, published SCI paper “Classification of Image Spam Using Convolution Neural Network” in *International Information and Engineering Technology Association (IIETA) - “Traitement du Signal”* Volume 39, No. 1
- [23] Ayyappa Chakravarthi M, Dr. M. Thillaikarasi, Dr. Bhanu Prakash Battula, published Scopus paper “Classification of Social Media Text Spam Using VAE-CNN and LSTM Model” in *International Information and Engineering Technology Association (IIETA) - Ingenierie des Systemes d’Information (Free Scopus)* Volume 25, No. 6.
- [24] Ayyappa Chakravarthi M, Dr. M. Thillaikarasi, Dr. Bhanu Prakash Battula, published Scopus paper “Social Media Text Data Classification using Enhanced TF\_IDF based Feature Classification using Naive Bayesian Classifier” in *International Journal of Advanced Science and Technology (IJAST)* 2020
- [25] Ayyappa Chakravarthi M. presented and published IEEE paper on “The Etymology of Bigdata on Government Processes” with DOI 10.1109/ICICES.2017.8070712 and is Scopus Indexed online in IEEE digital Xplore with Electronic ISBN: 978-1-5090-6135-8, Print on Demand(PoD) ISBN:978-1-5090-6136-5, Feb’2017.
- [26] Subba Reddy Thumu & Geethanjali Nellore, *Optimized Ensemble Support Vector Regression Models for Predicting Stock Prices with Multiple Kernels. Acta Informatica Pragensia*, 13(1), x–x. 2024.
- [27] Subba Reddy Thumu, Prof. N. Geethanjali. (2024). “Improving Cryptocurrency Price Prediction Accuracy with Multi-Kernel Support Vector Regression Approach”. *International Research Journal of Multidisciplinary Technovation* 6 (4):20-31.
- [28] Dr Syamsundararaothalakola et.al. published Scopus paper “An Innovative Secure and Privacy-Preserving Federated Learning Based Hybrid Deep Learning Model for Intrusion Detection in Internet-Enabled Wireless Sensor Networks” in *IEEE Transactions on Consumer Electronics* 2024.
- [29] Dr Syamsundararaothalakola et.al. published Scopus paper “Securing Digital Records: A Synergistic Approach with IoT and Blockchain for Enhanced Trust and Transparency” in *International Journal of Intelligent Systems and Applications in Engineering* 2024.
- [30] Dr Syamsundararaothalakola et.al. published Scopus paper “A Model for Safety Risk Evaluation of Connected Car Network” in *Review of Computer Engineering Research* 2022.
- [31] Dr Syamsundararaothalakola et.al. published Scopus paper “An Efficient Signal Processing Algorithm for Detecting Abnormalities in EEG Signal Using CNN” in *Contrast Media and Molecular Imaging* 2022.



INTERNATIONAL  
STANDARD  
SERIAL  
NUMBER  
INDIA



# INTERNATIONAL JOURNAL OF INNOVATIVE RESEARCH

IN SCIENCE | ENGINEERING | TECHNOLOGY

 9940 572 462  6381 907 438  [ijirset@gmail.com](mailto:ijirset@gmail.com)



[www.ijirset.com](http://www.ijirset.com)

Scan to save the contact details